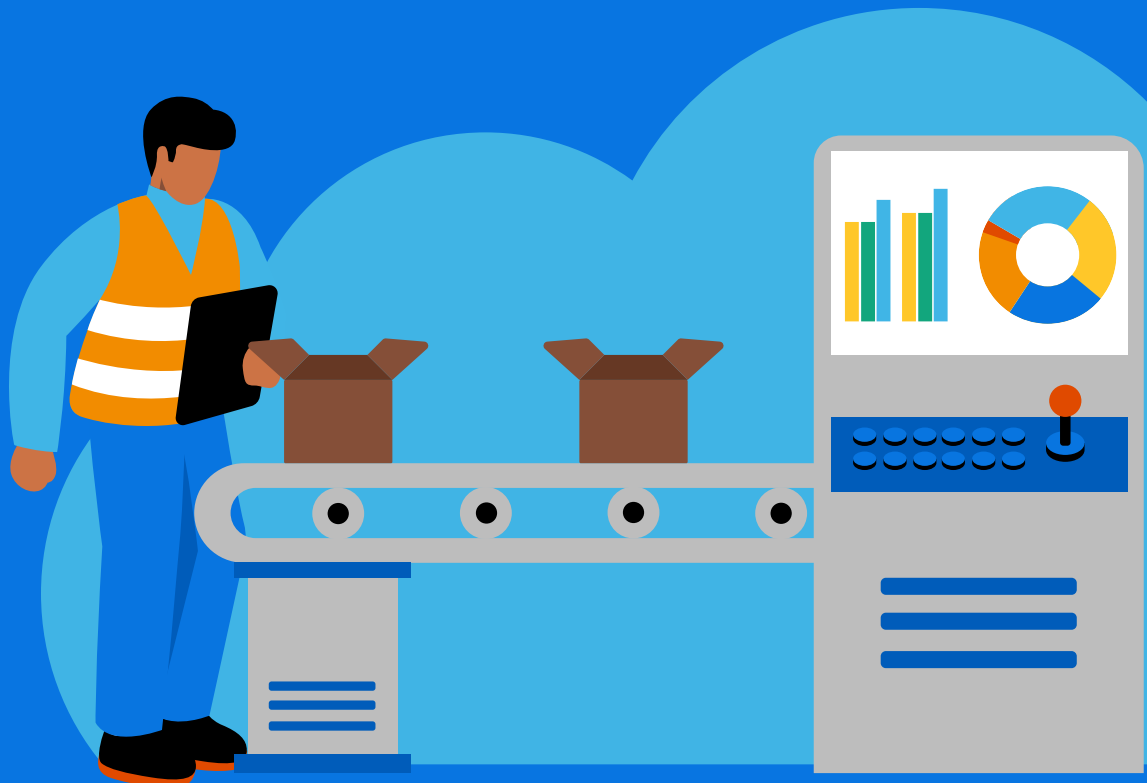


# Workday for the Manufacturing Industry



# Table of Contents

The World of Manufacturing Is Changing Fast	3
Accuride Moves Forward Faster with Workday	5
Everything You Need to Ignite Digital Acceleration	6
Delivering Value to All Areas of the Business	9
A Little More About Who We Are	11

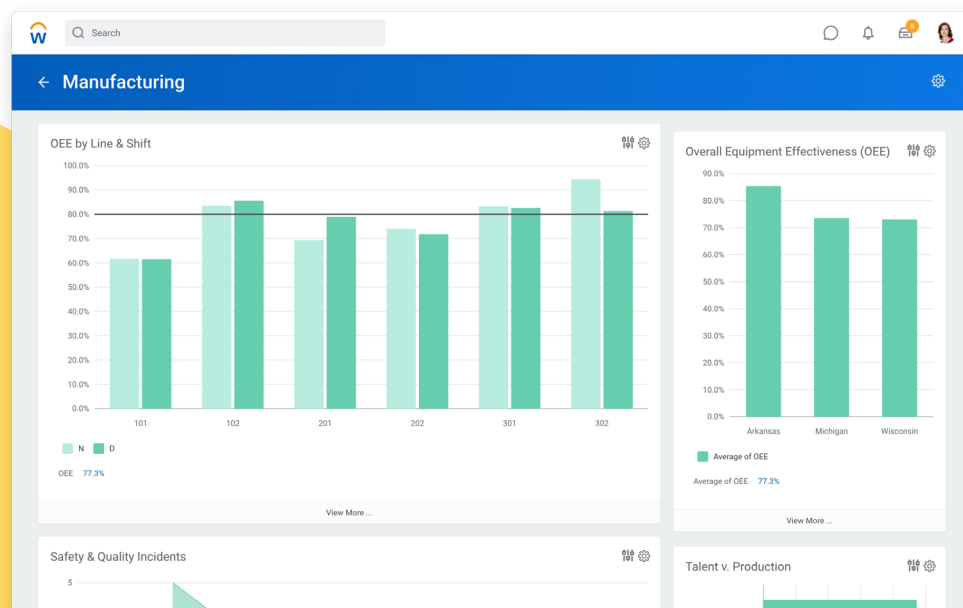
## The world of manufacturing is changing fast.

External factors continue to put pressure on the manufacturing landscape. The explosion of data, evolving demand patterns, disruption in supply chains, and a new focus on remote workers and employee safety require manufacturers to move faster to keep pace.

But that's easier said than done when inflexible, on-premise systems make it hard to balance critical business continuity with innovation. Without real-time access to accurate data, you're often left playing catch-up with change rather than staying ahead of it.

With Workday, manufacturers get the agility they need to develop the workforce, pursue growth, and stay resilient. Designed to understand where you've been, where you are, and how to take the best path forward, Workday delivers enterprise cloud applications for financial management, human resources, planning, spend management, and analytics.

Learn why Workday is a trusted partner to more than 7,900 organizations around the globe—including many of the world's leading technology companies and 45 percent of the *Fortune* 500—and start planning for an even brighter future.



With Workday, manufacturers can access all their critical business data to make better decisions, faster.

**Workday** is a proven partner  
for **manufacturers** of every kind.

**AIRBUS**

LEVI STRAUSS & CO.

 **BorgWarner**

**ZEISS**

 **ACCURIDE**

**DOW**

 **Elekt**

**flex**



**GOODYEAR**

**Johnson  
Controls**

 **Kimberly-Clark**



 **Rolls-Royce**

**Stanley  
Black &  
Decker**

  
**thyssenkrupp**

## Accuride moves forward faster with Workday.

Accuride, a global manufacturer of components for commercial and passenger vehicles, needed a better way to drive agility and deepen insights for faster, smarter decision-making. The answer was Workday.

With facilities in the U.S., Canada, Mexico, and Italy, this mid-market manufacturer historically relied on a patchwork of ERP systems and web applications. The company recognized the need to consolidate these systems and move to the cloud, but lacked the IT resources necessary to navigate complex system integrations. With Workday Financial Management and Workday Human Capital Management (HCM), Accuride found a comprehensive system to simplify integration—empowering business users with reliable data and advanced analytics based on a unified data core.

With Workday, Accuride benefited from:

- Sharper insights into manufacturing supply and production chains
- A simpler approach to managing a global business
- Greater agility to support mergers and acquisitions
- Easier compliance with regulatory requirements
- Continuous innovation to keep pace with change

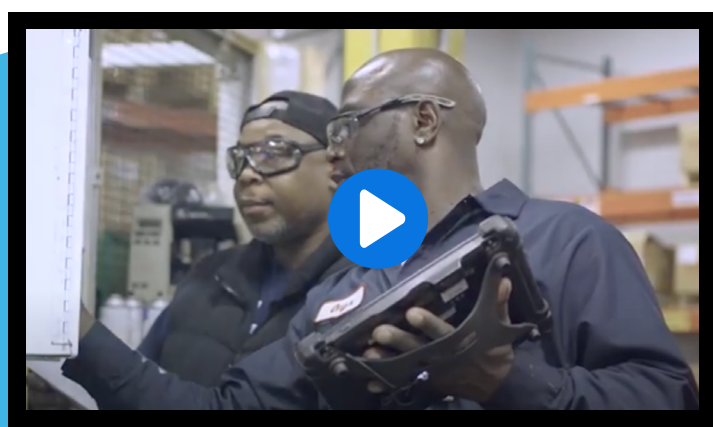
“

Accuride is a company that's growing. We wanted to future-proof ourselves for that global expansion, so we needed a product that we thought would get us there.

CIO, Accuride Corporation



See how Accuride drives agility with help from Workday.



## Everything you need to ignite digital acceleration.

### Agility at the core.

In a changing world, an organization's success depends on the CIO's ability to accelerate digital initiatives that support change and growth. With Workday, IT leaders are at the heart of strategic business decisions. And you get a system that's built to scale and evolve as your organization evolves.

- Build new apps on the trusted Workday cloud to meet changing finance and HR business needs.
- Blend operational data from any source with Workday data to broaden insights and help business leaders make smarter decisions, fast.
- Use an open set of APIs to ensure consistent outcomes, regardless of environment or user interface.
- Scale operations as workloads change and automatically apply resources where and when they're needed.

### Resilient operations. Continuous innovations.

Keep your business running smoothly, no matter the circumstances. Workday empowers your workforce to get the job done from anywhere. And with innovation such as machine learning automatically delivered, you benefit from the latest updates without disruption to the business.

- Drive end-to-end processes to handle growing demand and unforeseen changes.
- Support your workforce wherever they are with a system that has 99.7% availability.
- Seamlessly integrate with third-party systems—no additional costs or middleware required.
- Keep information safe through contextual data security, continuous data privacy in the cloud, and always-on auditing.
- Adopt new technology without rewriting code or buying a new version—innovation is built into the core of our system.



### An HCM system that adapts to the changing world of work.

Your workforce, how and where people work, and even the skills you need continue to shift. Workday Human Capital Management provides the ease of use and functionality that enable you to continue building a culture of excellence. And as your employees return to the workplace, you can easily support worker safety, incorporate ongoing planning and learning, and help your people and organization evolve.

- Get a full view of talent, labor, and cost with an HCM system that works alongside finance and payroll.
- Use machine learning and analytics to understand your people's current skills, as well as the ones you need.
- Deliver personalized learning that's relevant, contextual, and engaging to help employees develop and chart their own careers.
- Evaluate the workforce and workplace for reopening based on employee sentiment and eligibility, as well as workplace readiness.
- Establish metrics and actionable strategies to better achieve your belonging, diversity, and equity goals.

### Frictionless finance everywhere you operate.

To prepare for what's next, you need to spend less time moving data across the enterprise and more time on cash preservation, revenue insights, and more. With an agile accounting framework, you can do just that.

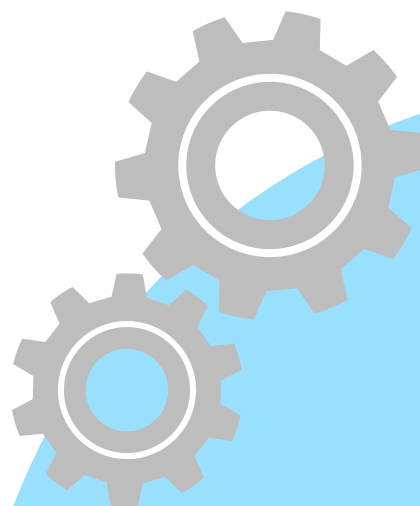
- Unify financial and operational data from across the enterprise, achieving rich insight to guide your business without disrupting your existing ERP landscape.
- Consolidate in real time and use machine learning to move the organization toward a zero-day close.
- Support global growth and liquidity events, including mergers, acquisitions, divestitures, and IPOs.
- Never lose sight of operational details with a big data analytics and ETL engine that can map unlimited dimensionality and create accounting transactions from any source.



## An intelligent data foundation to drive decisions.

To get where you're going, you need to know where you stand. Workday brings financial and workforce transactions, third-party and legacy application data, budgets and plans, peer benchmarks, and more together into a single system so you can understand your business like never before.

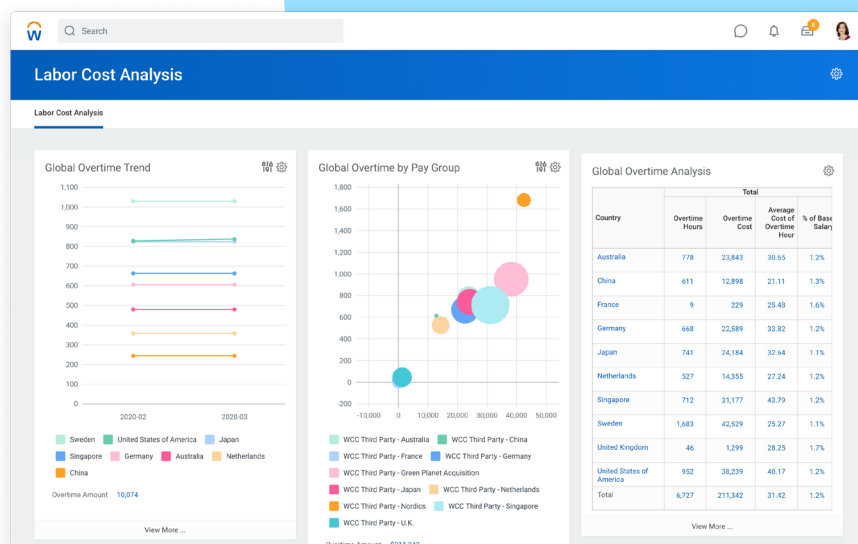
- Adapt to changing markets, product needs, sales channels, and more with one source for data.
- Compare your performance against peer organizations with opt-in benchmarks.
- Look at data from any angle to provide strategic advice to the business.
- Give teams the granular reporting they need while ensuring your sensitive data remains secure.



## Planning that's as dynamic as your organization.

Today, one plan isn't enough. That's why our enterprise planning system empowers you to plan for every scenario and adapt quickly to change for a variety of business functions, including sales, revenue, M&A, products, and more.

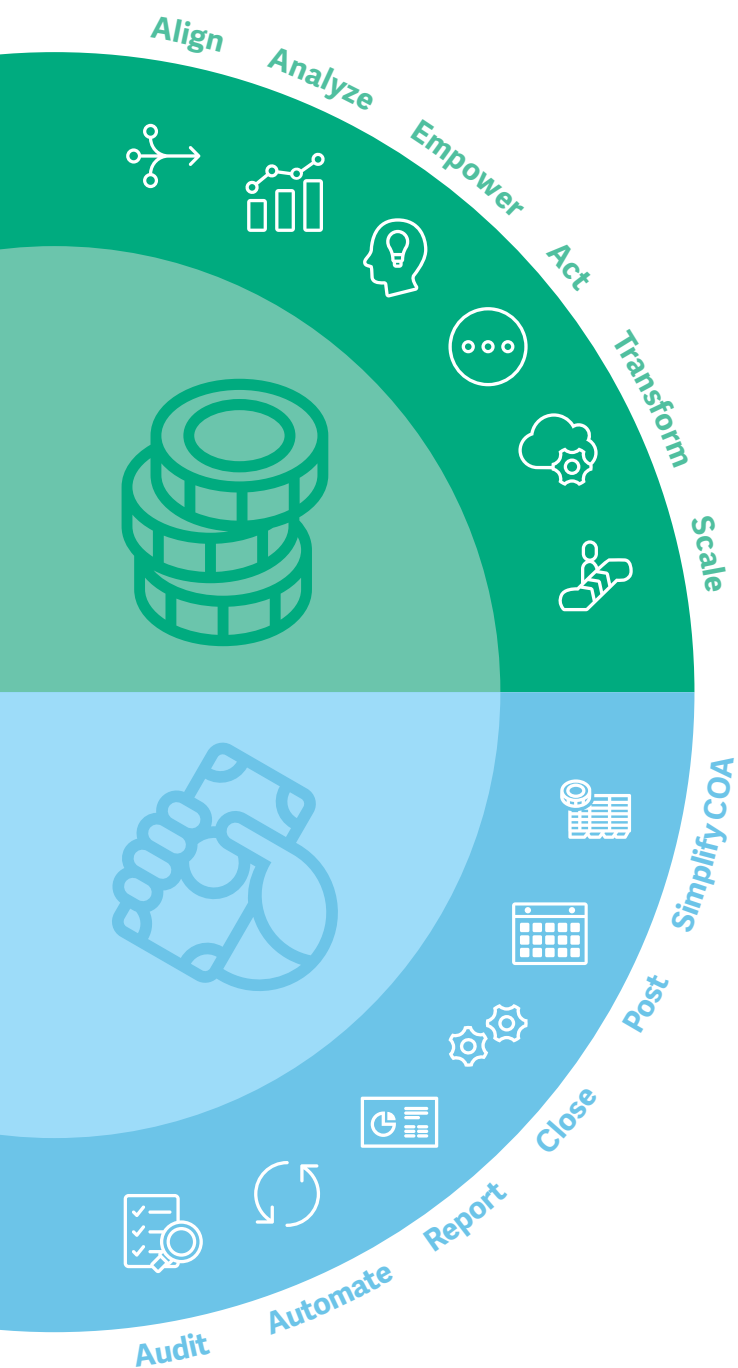
- Model what drives your business without having to jump through technical hoops.
- Generate granular sales and revenue planning for pricing, go-to-market execution, and more.
- Bring industry drivers and worker data together to plan your workforce.
- Enable product and customer profitability planning.
- Build strategic plans for everything, from budgeting expenses to forecasting revenue.
- Visualize insights with analytics embedded throughout the planning and reporting process.



Visualize insights and get answers to your most critical questions.



Delivering value to all areas of the business.



### Finance

Requisition to PO Cycle Time

▼ 27%

Unbudgeted Spend

▼ 15%

Payroll Overpayments

▼ 28%

Unmanaged Supplier Spend

▼ 10%

Out-of-Policy Procurement Events

▼ 50%

Reduced Variance: Actuals vs. Plan

▼ 35%

### Accounting & Controls

Time to Close (Quarterly)

▼ 20%

Manual Journal Entries

▼ 42%

Billing Accuracy

▲ 156%

Days Sales Outstanding (DSO)

▼ 29%

Ledger Accounts

▼ 63%

AR Time Spent on Strategic Work

▲ 52%

Delivering value to all areas of the business.



### People

Hires per Year

▲ 21%

Candidate Satisfaction

▲ 53%

Learning Hours per Employee

▲ 31%

Onboarding Time

▼ 37%

Employee Self-Service

▲ 4.7x

### Process

New Hires Tied to a Requisition

▲ 31%

Time to Implement Org Change

▼ 25%

Time to Integrate Acquisition

▼ 33%

Compensation Cycle Planning Time

▼ 17%

Late Time Corrections per Pay Period

▼ 23%

Accelerated Planning Cycles

▲ 66%

## A little more about who we are.

### We give back.

Workday is committed to supporting local and global causes that improve the quality of life in the communities where we do business. Workday employees around the globe run, walk, ride, paddle, mentor, advise, feed, read, develop, serve on boards, and even grow mustaches for their favorite causes.

### We create opportunity for all.

At Workday, we believe talent is everywhere, but opportunity is not. That's why we built Opportunity Onramps®, a workforce development movement dedicated to creating economic opportunity for all. We provide training, internships, and job opportunities for nontraditional candidates from diverse backgrounds.

### We value inclusion, belonging, and equity.

Diversity is not just a business imperative—it's core to everything we do. And our approach to diversity is simple: embrace everyone. We build a culture where all employees can bring their best selves to work, deploy diversity initiatives that acknowledge and support every individual, and create applications that empower inclusivity.

### We invest in positive change.

The Workday Foundation strives to positively impact our communities and support employees in their charitable contributions. Our goal is to create meaningful employment, break the cycle of poverty, and transform lives.





+1-925-951-9000 +1-877-WORKDAY (+1-877-967-5329) Fax: +1-925-951-9001 [workday.com](https://www.workday.com)

©2021. Workday, Inc. All rights reserved. Workday and the Workday logo are registered trademarks of Workday, Inc.  
All other brand and product names are trademarks or registered trademarks of their respective holders.  
[workday-for-manufacturing-ebook-enus](#)