



Fireplace Surrounds

Installation Guide



KINDRED

OUTDOORS + SURROUNDS

A **BORAL**® Brand



FIREPLACE SURROUND INSTALLATION

STANDARD WOOD FRAMING ONLY

Congratulations on selecting a Kindred Fireplace Surround! Kindred Fireplace Surrounds have been designed to install in just 5 steps. Please be sure to read through the entire installation instructions in advance of beginning your installation. If you have any questions regarding your Fireplace Surround or installation, please call us at 800-925-1491.



BEFORE YOU BEGIN...

TOOLS & PRODUCT INVENTORY

1. You will need the following tools for your installation:

- Measuring tape
- 4'-6' level
- 1/4" spacers (for grout joints)
- 4"-4 1/2" grinder with diamond blade or wet tile saw (for cutting hearth stones & riser blocks)
- Drill with screw attachment
- Large caulking gun
- Square
- A bucket of clean water & sponge
- Wood stud finder



2. Items included with your order:

- Mantel & legs
- Trim kit material: 3 panels (3/4" matching material)
- Ledger board and 4" mounting screws
- Large tube of color matched caulking
- 1 1/2" screws for tabs on legs
- Large tube of polyurethane adhesive
- 3 oz bottle of color wash (for touch-ups, if needed)
- Shims
- 3" gold screws for mounting mantel to ledger board





SURROUND INSTALLATION STEPS

1 PREPARE SURFACE/ GAS VALVE LOCATION

- 1) If completing a remodel, remove the existing material around your firebox. Make sure the firebox is flush with the surrounding wall. This will ensure a tight installation of the mantel, legs and trim panels to the wall.
- 2) Take note where the gas valve is located in relation to your fireplace opening. You may need to move this valve to ensure that it is not covered by your fireplace surround.



2 HEARTH INSTALLATION

Begin your Kindred Fireplace Surround installation with the hearth. If utilizing Kindred Hearths or Riser Blocks, follow these steps.

- 1) Select a hearth stone that is no thicker or taller than the distance from the sub flooring to the bottom of the fireplace opening.
- 2) If a raised hearth is desired, Kindred hearth risers can be utilized. They are designed of a lightweight material which allows for easy cutting in the field. Hearth risers must be capped with Kindred hearth stones. **See images 1-2**
- 3) Locate the center point of your firebox and mark the wall and floor.
- 4) Lay the hearth stones out on the floor and determine if any cuts will be needed. Additional center hearths are available to order if your hearth exceeds 72" long.
- 5) The hearth stones should lay flush with floor. **If they do not lay flush, please make adjustments using the shims provided with your surround.**
- 6) The hearth stones can be cut using a 4"-4½" diamond or wet saw. **See images 3 & 4**
NOTE: If installing hearth riser blocks, please mark with a square and use a 4"-4½" hand held diamond saw to cut to size.
- 6) Once the hearth stones have been cut to the correct size, center them underneath your fireplace opening.
- 7) Trace around each hearth stone using a pencil to create an outline on the floor. Be sure to allow ¼" for the grout joints. Remove the hearth stones to continue installation.



Image 1



Image 2



Image 3



Image 4



SURROUND INSTALLATION STEPS Continued

- 8) Apply the polyurethane adhesive to the clean, dry, dust-free floor substrate within your trace lines, and ensure that the adhesive is no closer than 2" from where the edge of the hearth stone is desired. Apply liberally to the floor and the back of the hearth stone to be set. Standardize grout joints immediately after setting stones, to ensure adhesive does not set prematurely.

See images 5–6

NOTE: To avoid hearth stones from moving when installing surround legs, wait for adhesive to dry.



Image 5



Image 6

3 LEG INSTALLATION

Before installing legs, double check fireplace opening left to right. Review the interior dimensions of your fireplace surround. Some Kindred Fireplace Surrounds can be adjusted a couple inches to make the interior dimensions smaller. This may be advantageous if you desire to have the legs finish directly to the edge of the vertical lines of the fireplace opening.

- 1) Using the inside leg dimensions, draw two parallel plumb lines on the wall surface next to the fireplace opening. Confirm that each line is equidistant from the center of the fireplace.
See image 7
- 2) Apply polyurethane to the back of the fireplace surround legs.
- 3) Glue legs in place along parallel pencil lines. Secure the top of the leg with the provided 1½" screws through tabs located at the top of the leg. The screws are intended to hold the legs in place until the adhesive cures.

NOTE: Make sure the tabs do not interfere with the mantel, by positioning them flush to the wall. Do not over tighten the screws.

- 4) Double check that the legs are plumb after adhering. It may be necessary to use shims to plumb the surround legs. This should be done immediately before the adhesive sets. If desired, you can space the bottom of the legs ¼" to create a grout joint.

See images 8–10



Image 7



Image 8



Image 9



Image 10



SURROUND INSTALLATION STEPS Continued

4 MANTEL INSTALLATION

The mantel has a small sloped piece along the inside top of the interior of the mantel. This slope is designed to receive the included wood ledger board, which will be mounted on the wall. The wood ledger board holds the mantel in place until the adhesive cures.

- 1) Lay the mantel face down on your floor and hold the wood ledger board tightly against the receiving slope. Measure the distance from the bottom of the wood ledger board to the bottom of the mantel. **See images 11 & 12**
- 2) Using the dimension referenced above, mark a line on the wall over the fireplace surround legs to indicate the location where the bottom of the wood ledger board will be installed. Add approximately $\frac{1}{4}$ " for the grout joint between the mantel and the legs. **See images 13 & 14**
- 3) Find the center point for installing the wood ledger board. Using a wood stud finder, mark the location of the studs along the level line for the wood ledger board.
- 4) Using the 4" screws provided with your surround, attach the wood mantel ledger to the wall along the level line.

NOTE: It is recommended to pre-drill the ledger board where the 4" screws will be located to avoid splitting out the wood.

Ensure that the wood ledger board is level. All screws should be driven securely into structural studs in as many places as possible. **See images 15-18**

- 5) Determine the midpoint of the mantel and dry-fit by setting mantel piece in place on top of ledger board. Do not use adhesive until you have double checked the mantel is level and an even grout joint is visible in between each leg. You can use $\frac{1}{4}$ " spacers to level out the mantel with the legs.



Image 11



Image 12



Image 13



Image 14



Image 15



Image 16



Image 17

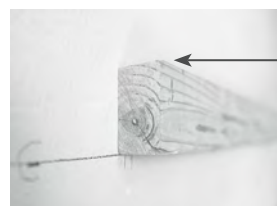


Image 18

NOTE: Wood Ledger Board receiving slope should slope up away from wall.



SURROUND INSTALLATION STEPS Continued

- 6) Once you have made final adjustments to level the mantel, apply polyurethane adhesive to the back edge of the mantel piece, the top of the wood ledger and the top of the surround legs. Gently press into place over ledger. **See images 19 & 20**
- 7) The top of the mantel includes pre-drilled holes. Use the provided gold trim screws to attach the top of mantel to the ledger board. Do not over tighten the screws. Screws should be tightened to the point that the screw head is just below the surface of the mantel. (Fill screw holes with provided color matched caulking or grout.) **See image 22**
- 8) Finish all joints with provided color matched caulking. **See images 23**



Image 19



Image 20



Image 21



Image 22

5 TRIM KIT PANEL INSTALLATION

If you choose to use the provided trim panels, these will be installed last. Trim panels are optional and are designed to fit the space between the fireplace surround and the firebox. If the surrounding area around your firebox is larger than the provided trim panels, larger sizes are available to order. Other decorative options such as stone and ceramic tile are often used to finalize the installation.

1. Measure the dimensions needed for the trim panels. This will be the distance between the inside leg and the edge of the existing fireplace. Make sure the trim panels do not interfere with the fireplace door and screen opening.
2. Field cut the trim panels to fit with either a 4"-4½" diamond saw or wet tile saw.
3. Apply adhesive to the back of the panel and the wall where the panel will be set. Press the panel against the wall.
4. Grout joints with provided color matched caulking or grout. **See images 24 & 25**



Image 23

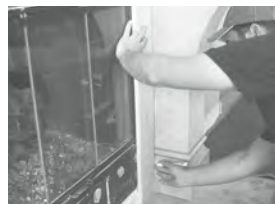


Image 24



Image 25



APPLICATIONS OVER METAL

Prior to installation, consult the firebox manufacturer for guidance and instructions. Proper clearances and specific installation details may be provided and must be maintained per manufacturer's recommendations.

In the event the firebox manufacturer's instructions conflict with the intent of statements made in this document, please contact us at 800-925-1491 for additional assistance.

- 1) Pre-cut pieces of diamond lathe to attach over metal firebox flanges. Leave the diamond lathe about a ½" short of the inside edge of where the stone trim panels will end around the firebox.
- 2) Use self-tapping sheet metal screws to attach pre-cut pieces of diamond lathe over the metal firebox flanges.
- 3) Dry fit the stone trim panels into desired position; there should be a +/- ¼" caulk joint between the panels. Use a damp sponge to wipe off any dust on the back of the panels.
- 4) Fill the wire lathe with a ½" cementitious base coat. Depending on the heat output of the fireplace, use either a Polymer Modified Thinset Mortar or Mason Mix.
- 5) Using a Polymer Modified Thinset Mortar or Heat Resistant Silicone, apply a ¼"-⅜" thick coating to the entire back of the stone trim panel.
- 6) Press the coated panel onto the diamond lath; use shims or spacers to get the correct joint spacing.
- 7) Wipe of any excess mortar mix that has squeezed out.
- 8) Finish all joints with provided color matched caulking.
- 9) Allow 24 hours for mortar to fully cure before use.

FINALIZING INSTALLATION

To ensure the Kindred Fireplace Surround is installed properly and maintains as strong a bond to the substrate as possible, adhesives must cure completely. Please follow these recommended guidelines:

- After application, do not disturb product for a minimum of 24 hours.
- Do not allow product application area to come into contact with extreme temperatures. Area must be kept dry while adhesive cures.
- It is essential that NO fires be lit in fireplace until after adhesive is completely cured.
- For best results, also caulk or grout joints after adhesive is completely cured.

A color touch-up kit is provided in case the fireplace surround was damaged during installation. If damaged, simply dab a small amount on a rag and apply to blemished area. Wipe excess off.





KINDRED

OUTDOORS + SURROUNDS

A **BORAL**® Brand

If you would like more information on this product or answers to any questions not covered in this manual, please contact us. We would be happy to assist you.

800.925.1491 www.mykindredliving.com

