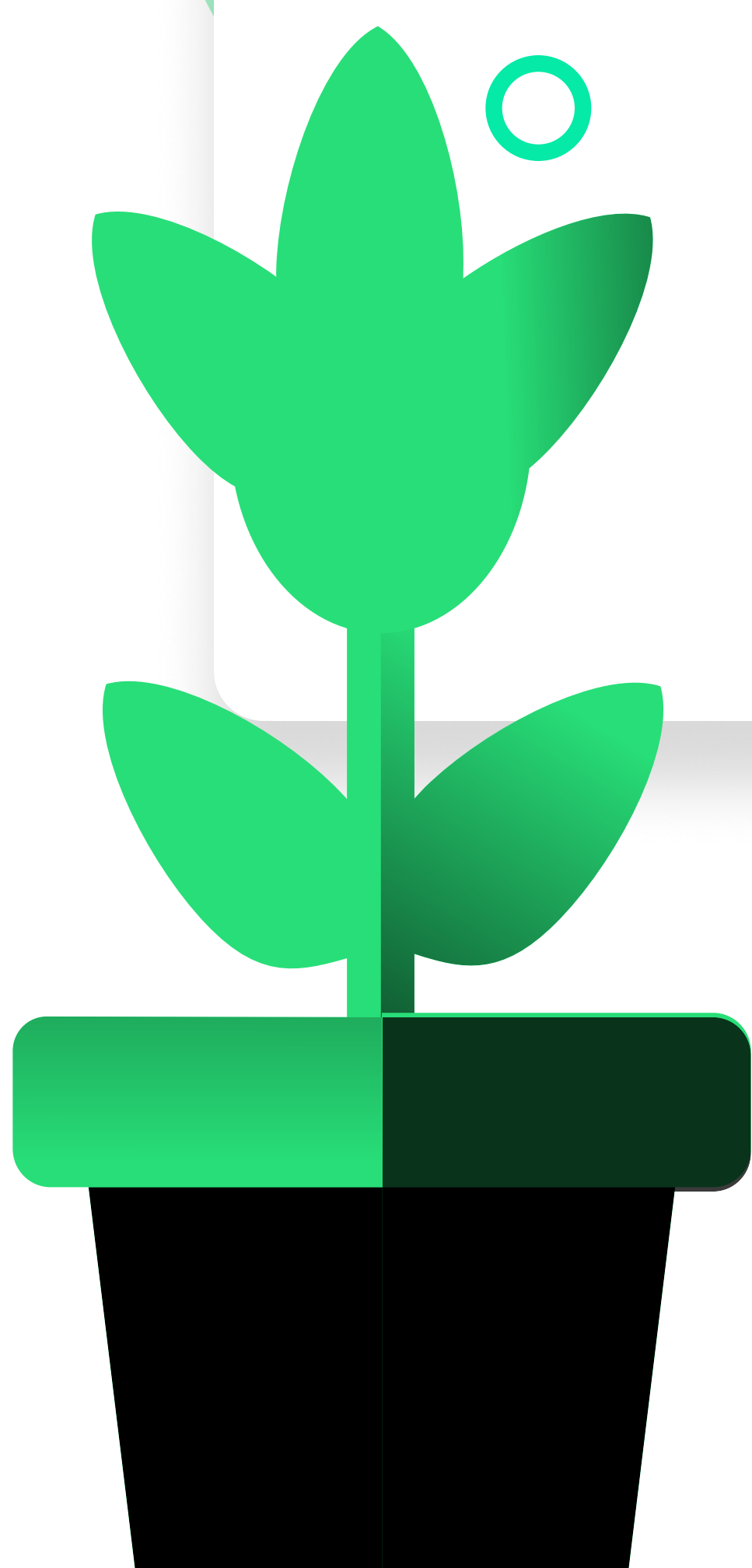




Elexio Product Comparison: Elexio Deluxe vs Elexio Community

New items released on Elexio Community in the last 12 months

- Glance
- Volunteer Schedules
- Worship Planning
- MinistryOne
- Smart Check-in
- Mobile Access –
through app or browser
- MinistryID (Single-sign On)



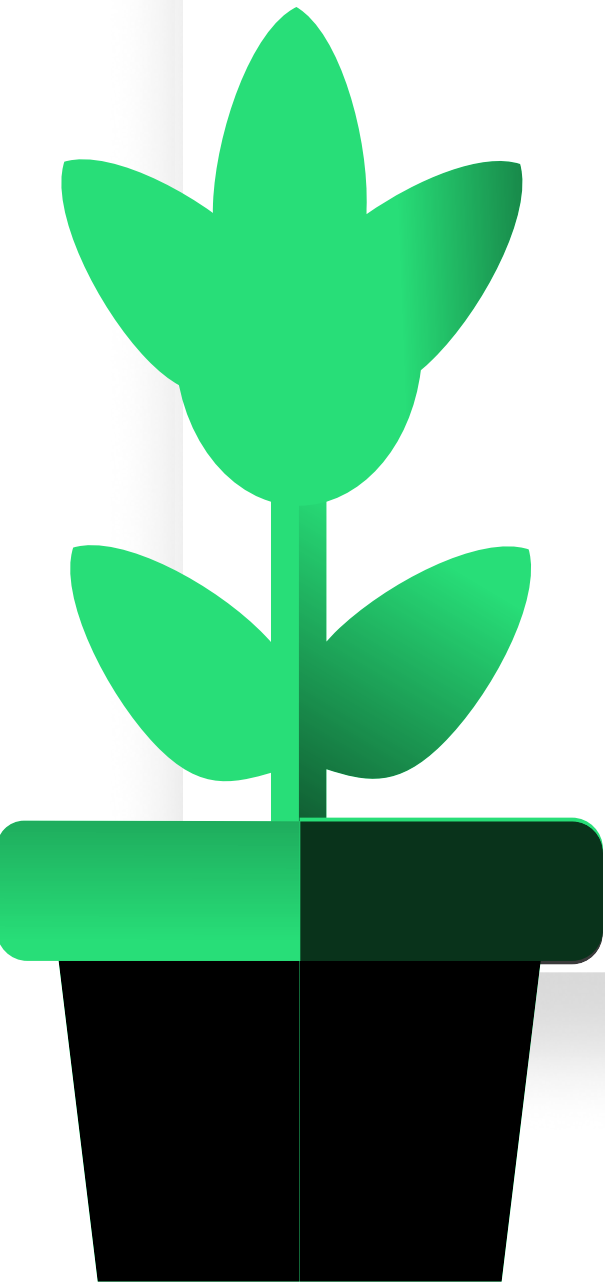
Before we get into a feature by feature detailed comparison, here’s a look at some key differences between our old and new systems

Key Concepts

Elexio Deluxe

Elexio Community

Status	Tracked as field, with stacked history view	Tracked as a field or people group, history available but not stacked
Events	Complex event calendar. Events required for check-in and for form-based registrations	Streamlined event calendar with no dependencies to check-in or forms. Can create multiple views for public and internal use.
Check-In	Dependent on events, Windows PC only. Offline access option. Mobile check-in available.	Runs on MAC and PC, no event dependency. Offline access option (iPad only) Mobile Check-in available Smart Check-in uses various criteria to suggest and pre-select check-in groups to speed and simplify the process.
Involvement Tracking	Pre-defined and rigid (Groups, Ministry Teams, Classes, Mailing Lists.)	User-defined and flexible
Volunteer Scheduling	Done through complex events and tied to calendar.	Easy-to-use Schedules module for simple schedules. Not tied to calendar. For more complex schedules and service planning, Worship Planning software is available at no additional cost.
User Access	Installation required. Mac users must access using remote desktop.	No installation required. Fully responsive, browser-based access. Database mobile app for staff and key volunteers.



General / People

Elexio Deluxe

Elexio Community

Private Personal Information	YES	YES
Standard Ministry Assessment Data	YES	NO
Advanced Custom Search	YES	YES
Attached Files to Peoples Records	NO	YES
Searchable Notes	YES	YES
Searchable Notes by Type	YES	YES
Custom Automated Workflows	NO	YES
Assigned Follow-Up Task Completion Without Login	NO	YES
Single Sign-On (App, Giving, Database)	YES	YES
Customizable Fields	NO	YES
Alternate Address-By Date (I.E. Snowbirds, College Students, ETC)	NO	YES
Admin Ability to Easily View a User Security Role (easy “login as” option)	NO	YES
Mobile View of Outstanding Follow Ups	NO	YES
Mass Delete of People Records	NO	YES
Integrated Online Forms	YES	YES
Integrated Mobile App	YES	YES

Reports & Dashboard

Elexio Deluxe

Elexio Community

Custom Report Layouts	YES	YES
Saved Report Filters	YES	YES
And/or Report Filter Strings	YES	YES
Favorited Reports	YES	YES
Report Filter by Most All Demographic Data	YES	YES
Graphical Attendance & Giving Reports	NO	YES
Easy View Absence Tracking	NO	YES
Custom Giving / Attendance / Involvement Data Via Dashboard	NO	YES
Dynamic Date Range Filters	YES	YES



Communication

Elexio Deluxe

Elexio Community

Saved Email Content Templates	YES	3rd Party
Mail Chimp Integration	NO	YES
Constant Contact Ingegration	NO	YES
Email Sent Log On People Record	NO	YES
Log of All Emails Sent/Failed For Everyone	YES	COMING SOON
Send Email Via Mobile Device	NO	YES
Form Letters/Mail Merge	YES	3rd Party
Mass Voice Messaging	NO	YES
Text Messages Included at No Cost	100	1000
Dynamic Field Data Insert Into Emails	YES	YES



Involvement

Elexio Deluxe

Elexio Community

Group Finder Ability to Join a Group	NO	YES
Custom Group Attributes (The ability to view/filter groups by a custom organizational system)	YES	YES
Group Involvement Level Designation (Leader, member, coordinator, etc.)	YES	Leader Only

Portal

Elexio Deluxe

Elexio Community

Propose Family Record Updates	NO	YES
Giving History & Giving Setup - One Location	YES	YES
Group Leaders Can Email Group Members	YES	YES
Leader Can Post Group Links	YES	NO
True Calendar View of Events	NO	YES
Portal Access Can Be Extended By Security Role To Include Any System Feature	NO	YES
Google + And Facebook Login	YES	NO

Donation Tracking

Elexio Deluxe

Elexio Community

Custom Giving Method Drop Down List	YES	Q4 2020
Donation Import From CSV	NO	YES
Multi-Level Donation Comments	YES	YES
Check Scanning	YES	YES
Remote Deposit After Check Scan	YES	3rd Party
Self-Service Giving Kiosk Allows Functions Beyond Giving	YES	Q4 2020
Email Contribution Statements	NO	YES

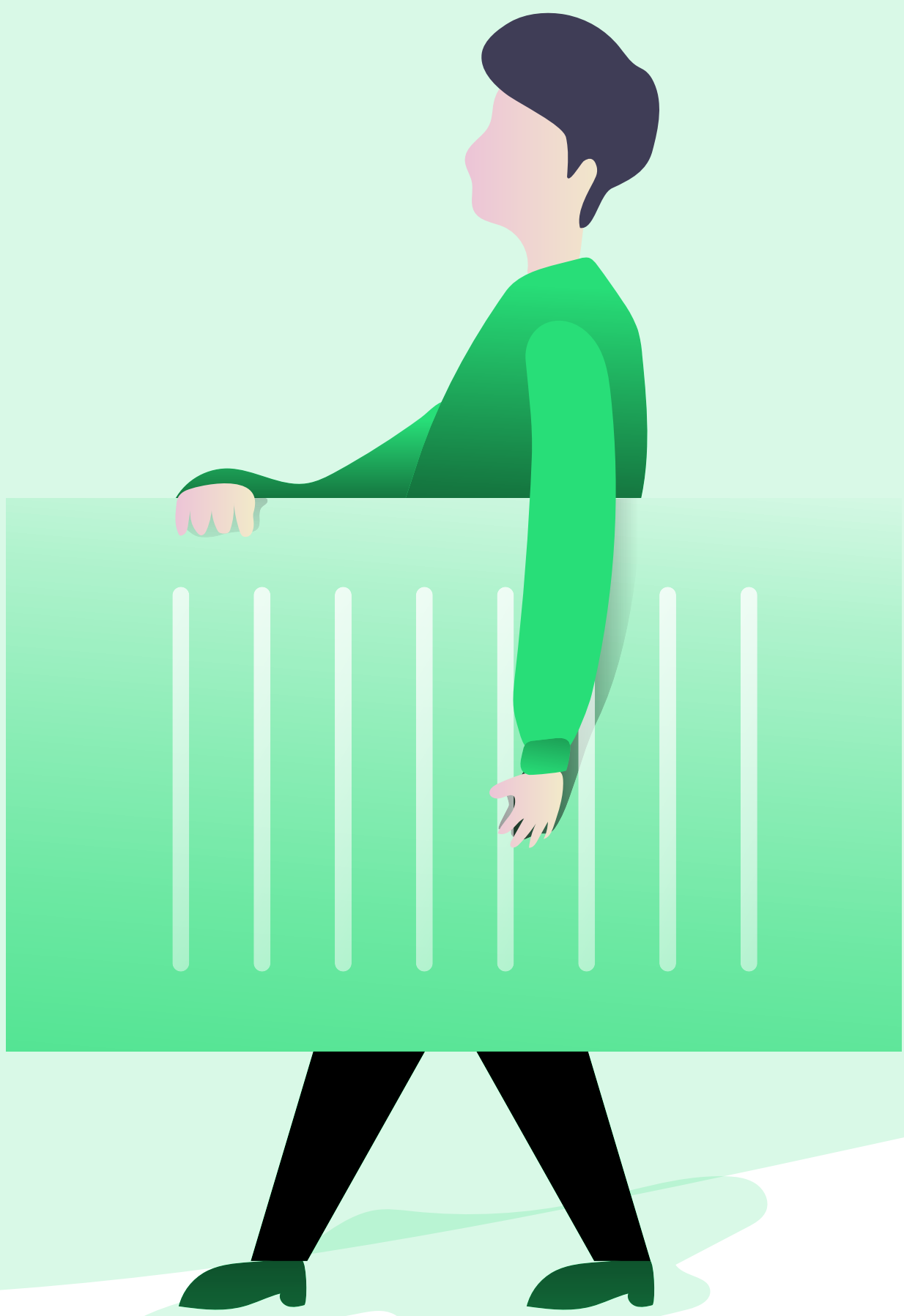


Events

Elexio Deluxe

Elexio Community

Event Resource Scheduling	YES	YES
Event Vehicle Scheduling	NO	YES
Event Room Specific Resources	NO	YES
Custom Event Calendar Graphics	YES	NO
Event Volunteer Scheduling	YES	YES
Calendar Event Saved Room Setups	NO	YES
Calendar Item Attendee Registration / Payment Status View	YES	YES
Saved Calendar View-Security Controlled	NO	YES
Custom Calendar Website Embed Codes	NO	YES
Custom Registration Forms	YES	YES



Check-In / Attendance

Elexio Deluxe

Elexio Community

Check-In Via Barcode	YES	YES
Check-In Via Finger Print	YES	NO
Check-In Via RFID	NO	YES
Check-In Mobile Restricted by Church Distance	NO	YES
Custom Attendance Aggregates (Multi-event system generated attendance totals)	NO	YES
Offline Check-In	Windows Only	IOS Only
Security Code Randomization	YES	NO
Smart Check-In - LEARN MORE	YES	YES



Below are the most commonly run reports in ELEXIO’s installed (deluxe) version. A yes in the Community column indicates that information is available for analysis but is not meant to indicate that report is found with the same name.

Reports

Elexio Deluxe

Elexio Community

Contribution Summary	YES	YES
Contribution Detail	YES	YES
Contributions By Method	YES	YES*
Contributions By Fund	YES	YES
Contribution/Pledge Summary	YES	YES
Contribution Statements	YES	YES
Attendance Detail	YES	YES
Absence Reporting	YES	YES
Attendance Summary	YES	YES
Room Attendance Report	YES	YES
Attendance Tally Sheet	YES	YES
People List	YES	YES
Directory	YES	YES
Birthday List	YES	YES
Small Group Involvement	YES	YES
Ministry Team Involvement	YES	YES
Assigned Follow-Ups	YES	YES

Limited* - Data is Available but with limited filtering, formatting or detail options.

Separate* - Indicates the data is available but two reports must be used..

YES*- Requires use of batch contribution entry