

DC SMARTStart® II

Rugged, High Power, and Small Package

APITech’s customers rely on robust communications and networking equipment that often is remotely deployed and sometimes can experience a lock-up or overload condition that causes service interruption. These customers also need rapid deployment with different load types and flexible overload configuration.


The DC SMARTStart® II is designed to address those requirements and more. The new device has a range of new features, which include a uniquely flexible overload and short-circuit protection function, an enhanced network interface with critical security protocols, and high-power density with up to 10 kW capacity in a 1U rack power mount distribution package. It also has a configurable output load start sequencer and expanded operating temperature rating.

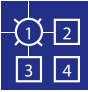
The DC SMARTStart® II also provides secure, remote, and rapid reset of locked or overloaded equipment as well as on-the-fly configuration of overload short-circuit protection. The system’s enhanced network interface card now includes SNMPv3, HTTPS, and SSH security protocols. It supports high-availability applications with dual source inputs to drive redundant power supplies in critical loads.


Other functions include a configurable output load start sequencer to mitigate inrush current and reduce nuisance overloads, expanded operating temperature rating for deployment in challenging environments, and individual or group output channel control and monitoring.





Features


- 


-48 VDC or +28 VDC input power. Dual feed inputs with associated output banks, consisting of six channels each.
- 


User configurable power up sequence and delay. User definable output channel banks.
- 

Solid state circuit breakers with configurable nuisance trip auto reset. User configurable overload trip points per output channel.
- 

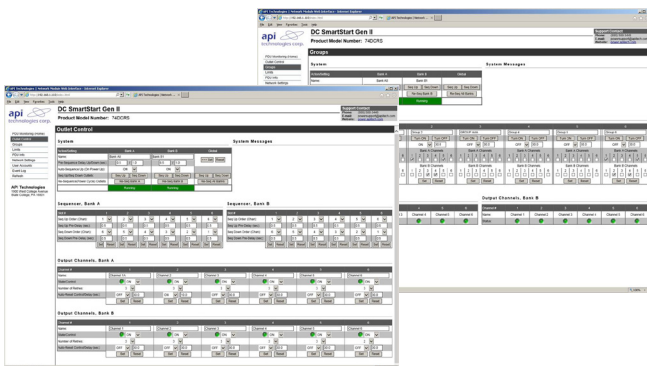
Monitors line voltage, input current, output channel currents, and internal temperature. Configurable alarm levels.
- 

Network interface supports SNMPv3, SSH and HTTPS (with SSL/TLS V1.3) secure protocols; includes web server for monitoring and configuration.
- 

Front Panel push buttons for local output control. Output status is displayed through individual tri-colored LEDs for each output.
- 

Reverse polarity protection and transient voltage surge protection.
- 

Independent programmable power on and off sequencing delays to manage and reduce inrush current transients.



Technical Specifications	
Dimensions	17.25" W x 13.50" D x 1.75" H
Weight	14 lbs. (6.4 kg)
Temperature	Operating: -20°C to +60°C; Storage: -20°C to +70°C
Humidity	Operating & Storage: 0 to 95% (Non Condensing)
Altitude	Operating: 0 to 10,000ft. (0 to 3,048m); Storage: 0 to 30,000ft. (0 to 9,144m)
Agency & Approvals	UL recognized under 62368-1; FCC Part 15 Class A.

Electrical Ratings					
Part Number	Input Voltage	Input Current Side A	Input Current Side B	Total Power (watts)	Output Current Max Continuous Per Channel
74DCRS03024P	+24	30	30	1440	1-25
74DCRS03048N	-48	30	30	2880	1-25
74DCRS06024P	+24	60	60	2880	1-25
74DCRS06048N	-48	60	60	5760	1-25
74DCRS10024P	+24	100	100	4800	1-25
74DCRS10048N	-48	100	100	9600	1-25

Communication Interfaces	
Network Interface	
Connector	RJ-45 Connector
Standard	802.3
Data Range	10/100 (Auto-Sense)
Physical Layer	10/100 Base T
Network Protocols	SNMPv3, HTTPS (with SSL/TLS V1.3), SSH
Serial Interfaces	
RS232	RJ11 Connector; ASCII proprietary protocol (see manual)
USB	USB-B, USB 2.0 Connector; used for firmware updates