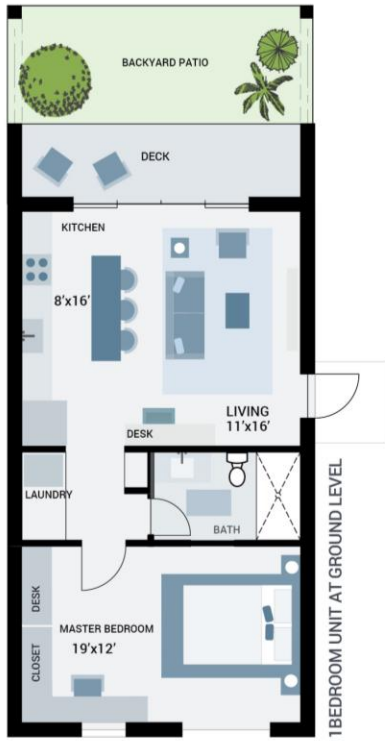
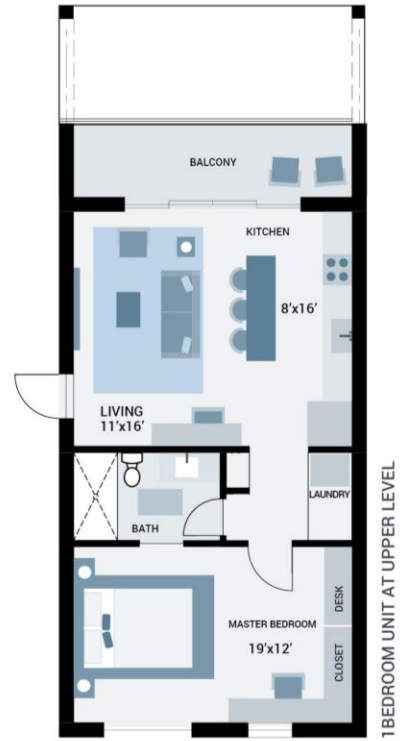


**1 BEDROOM FLAT**

-   
1 BED
-   
1 BATH
-   
1 LAUNDRY



INTERIOR	EXTERIOR	TOTAL
662 SF	190 SF	852 SF



INTERIOR	EXTERIOR	TOTAL
662 SF	57 SF	719 SF

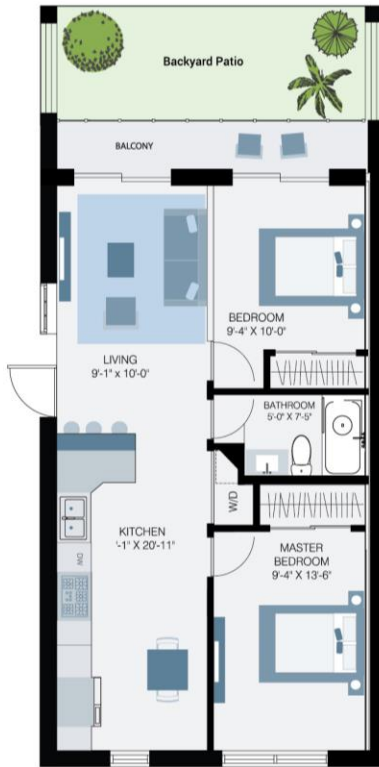
 **BEDROOM FLAT**

  
2 BED

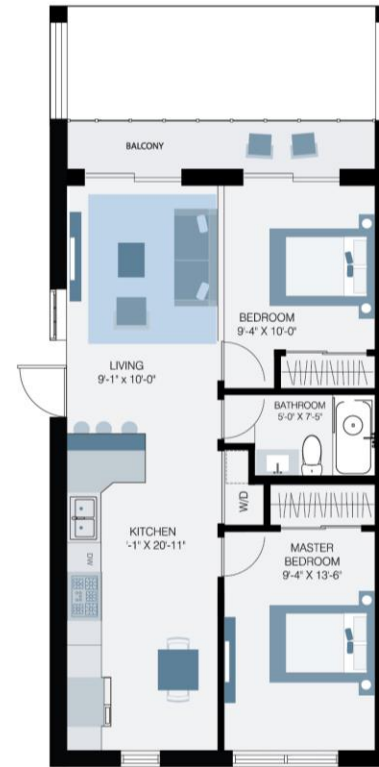
  
1 BATH

  
1 PATIO

  
1 BALCONY/ DECK



**INTERIOR** 662 SF  
**EXTERIOR** 190 SF  
**TOTAL** 852 SF



**INTERIOR** 662 SF  
**EXTERIOR** 57 SF  
**TOTAL** 719 SF

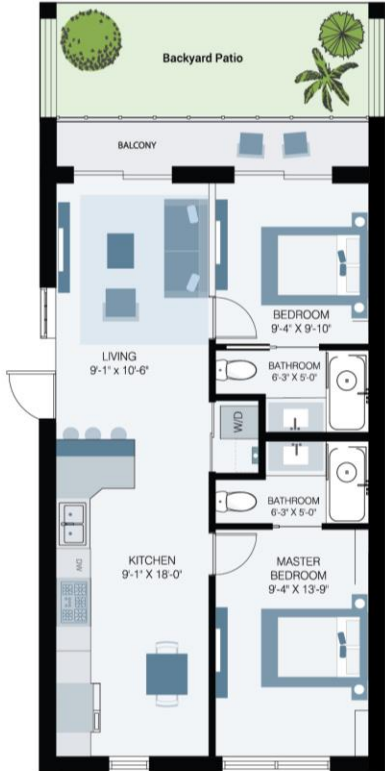
 **BEDROOM FLAT**

  
2 BED

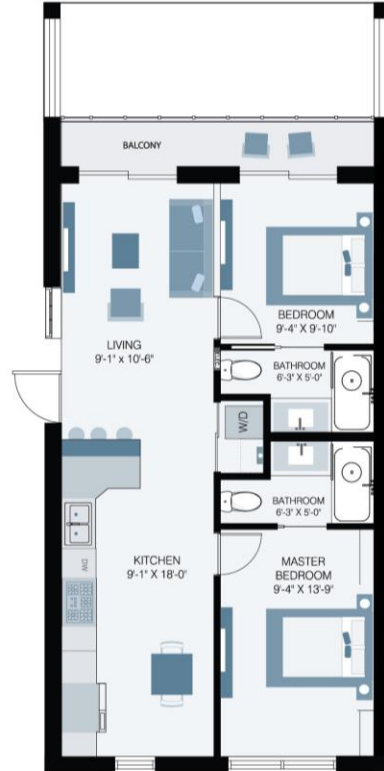
  
2 BATH

  
1 PATIO

  
1 BALCONY/ DECK



INTERIOR	EXTERIOR	TOTAL
662 SF	190 SF	852 SF



INTERIOR	EXTERIOR	TOTAL
662 SF	57 SF	719 SF

# FLOOR PLANS



## BEDROOM TOWNHOME-OPTION A



2 BED



2.5 BATH



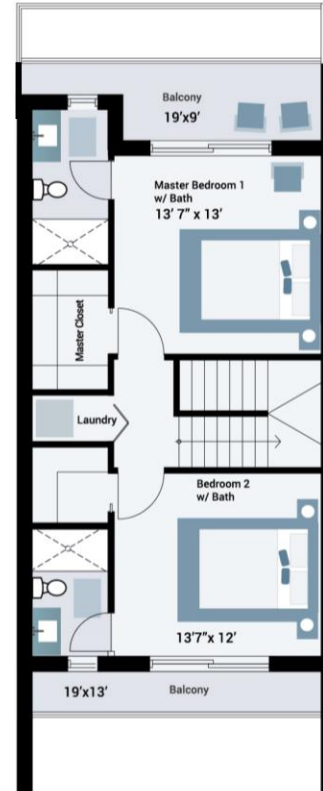
1 PATIO



2 BALCONY



2 BEDROOM UNIT FIRST FLOOR



2 BEDROOM UNIT SECOND FLOOR

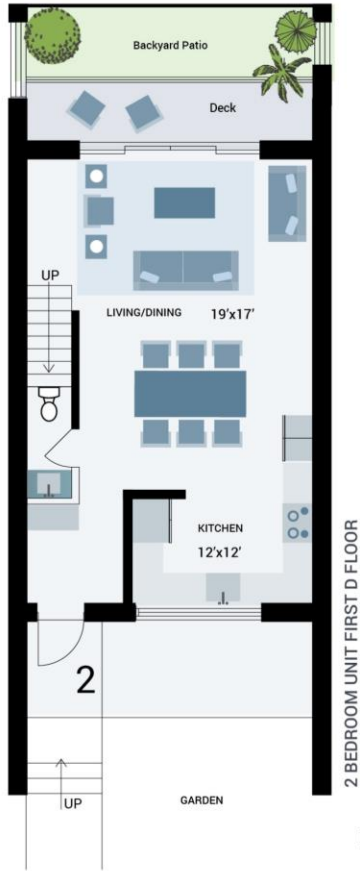
**INTERIOR**  
1198 SF

**EXTERIOR**  
509 SF

**TOTAL**  
1,707 SF

# FLOOR PLANS

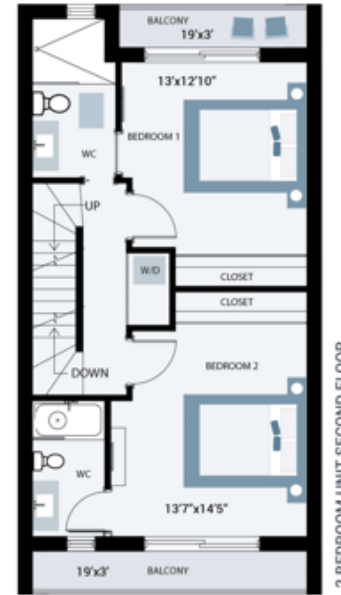
## BEDROOM TOWNHOME-OPTION B



**INTERIOR**  
1312 SF

**EXTERIOR**  
395 SF

**TOTAL**  
1,707 SF



# FLOOR PLANS

## 3 BEDROOM TOWNHOME-OPTION A

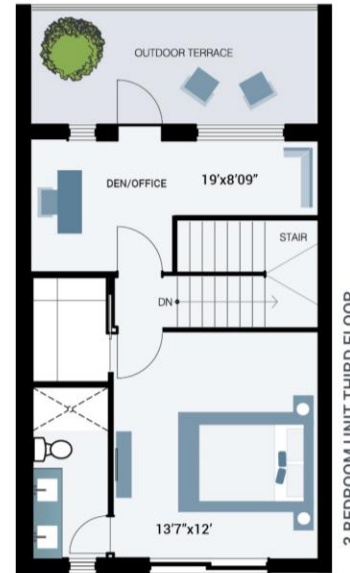
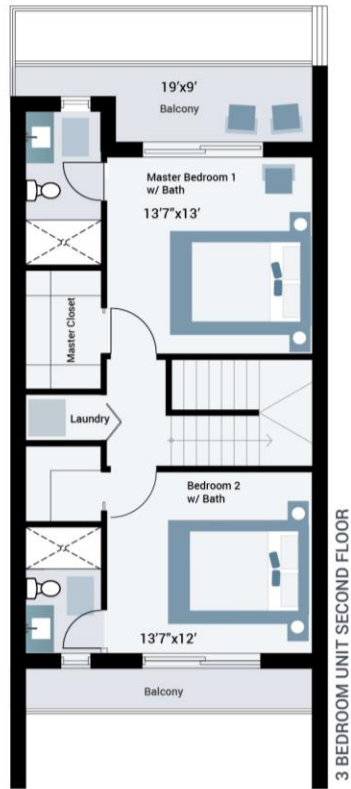
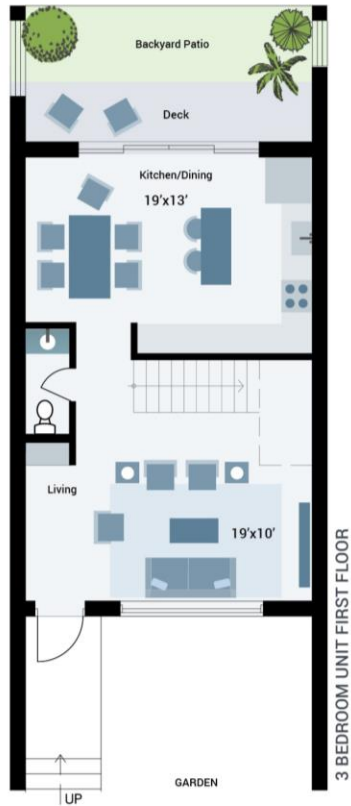
 3 BED  
 3.5 BATH

 1 PATIO

 1 ROOFTOP TERRACE

 2 BALCONY

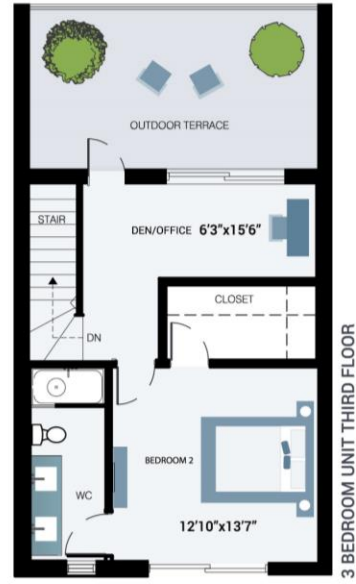
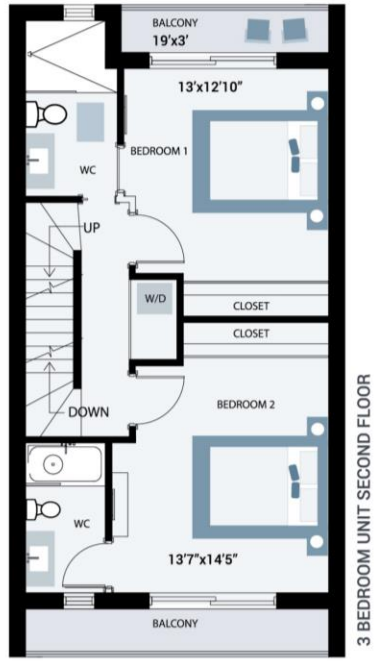
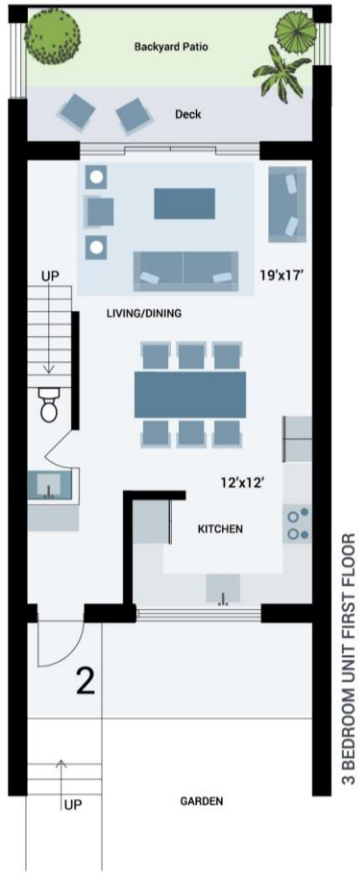
 1 DEN



INTERIOR	EXTERIOR	TOTAL
1,794 SF	549 SF	2,343 SQFT

# FLOOR PLANS

## 3 BEDROOM TOWNHOME-OPTION B

  
**3 BED**
  
**3.5 BATH**
  
**1 PATIO**
  
**1 ROOFTOP TERRACE**
  
**2 BALCONY**
  
**1 DEN**


<b>INTERIOR</b>	<b>EXTERIOR</b>	<b>TOTAL</b>
<b>1,737 SF</b>	<b>607 SF</b>	<b>2,343 SQFT</b>

## RESIDENTIAL DWELLING DESCRIPTION

### • General

- All windows and doors hurricane impact rated. Screens in front of all windows.
- Residential quality Stainless Steel Fixtures – Kwiksets or similar
- 1 Electrical panel wall mounted in unit
- LED lighting in bedrooms, hall and kitchen/living
- 4.5 cu. washer and matching stackable 7.4 cu. propane dryer installed. Whirlpool or similar.
- Choice of Porcelain tile floors throughout unit including porch and patio
- HVAC compressor, air handler and all ductwork installed with control units
- Two coats of paint on one coat of primer to all sheetrock ceilings and walls
- Rooftop Solar Panels: 2.3 kW AC/ 2.56 kW DC solar energy system with 8 panels and 4 inverters
- Energy efficient AC system; Multizone for 2 and 3 bedroom townhomes
- Pre-wired High speed internet/cable
- On demand hot water heater

### • Kitchen

- Choice of colors of slab or shaker design kitchen cabinets
- Choice of colors of stone kitchen countertops
- Appliances KitchenAid or similar to include dishwasher, refrigerator, stove, extractor hood and microwave unit all in a stainless steel finish

### • Bathrooms

- Exhaust fan
- Metal stud walls (lightweight metal stud framing - gauge to follow span / length per USG construction handbook) with ½" or 5/8" sheetrock depending on area
- Tempered glass partition for shower
- Choice of colors of tiled walk in shower with tiled walls
- Kohler or similar bathroom hardware and toilet
- Choice of colors of shaker design vanity with legs

### • Bedrooms

- Closet with rod and shelves installed

## GENERAL DEVELOPMENT DESCRIPTION

- Parking lot to be done with concrete and/or permeable paving
- Building structure to be reinforced concrete
- Building External walls to be ICF
- Roofs to be cast-in place concrete with liquid roofing membrane applied to exterior
- Family size swimming pool with cabana, showers and bathrooms