



Mobile Conveyor

Build Flexible Systems

Scale Up And Down Quickly

Increase Operational Efficiency

Adjust Your System As Demands Change



CREATE LAYOUTS THAT MEET YOUR NEEDS

CASTER-MOUNTED MDR CONVEYOR

CCS's Mobile Conveyor runs on energy-efficient, quiet, safe 24v DC conveyor that's mounted on casters for quick and easy system reconfiguration.

MODULAR, SCALABLE AND FLEXIBLE

All system components for Mobile Conveyor are completely modular to provide the flexibility needed to easily adjust systems to meet changing throughput needs.

PRE-WIRED AND PRE-TESTED

All of our Mobile Conveyor is shipped pre-tested and pre-wired. Installation is as easy as setting up a card table. All you have to do is unfold the legs, secure the supports, plug it in and just like that it's ready to move product.

BUS POWER & CONTROLS UP TO 7 SECTIONS

One "parent" conveyor section controls up to seven conveyor sections via a single Main Control Panel (MCP). Power and controls are carried to "child" sections using mating overmolded connectors.

FULL SYSTEM COMPONENTS AVAILABLE

Available Mobile Conveyor System components include:

- Straights
- Lift Gates
- Curves
- Floor Curves
- S-Curves
- Herringbones
- Skews
- Diverters
- Inclines

All system components have the same caster-mounted mobility and bussed power and control functionality.

LITTLE TO NO MHE PERMITTING REQUIRED

Because Mobile Conveyor from CCS is not a permanent MHE installation, there is little or no electrical or mechanical permitting required to install and operate a Mobile Conveyor System in most U.S. jurisdictions.



10 ft. Mobile Conveyor Section Endview

PRODUCT SPECIFICATIONS

Between-frame Widths: 36", 48"

Section Lengths: 5', 6', 10'

Weight Capacity: 75 lbs. per linear foot

Operating Speeds: 40 to 180 FPM

Operating Voltage: 24V DC

Supply Voltage: 120V AC (converted at MCP)

4-position Speed Control Switch

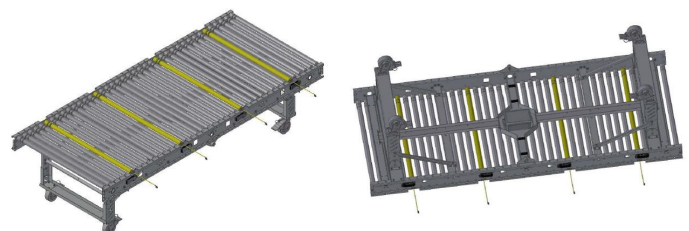
2-position Forward/Reverse Control Switch

Standard Speed Settings: 60, 66, 131, 160 FPM

Start/Stop controlled with single touch-sensitive device

Operational Environment: 10-120° F, 10-95% Humidity

UL/CE Certified



10 ft. Mobile Conveyor Section 3D Model