

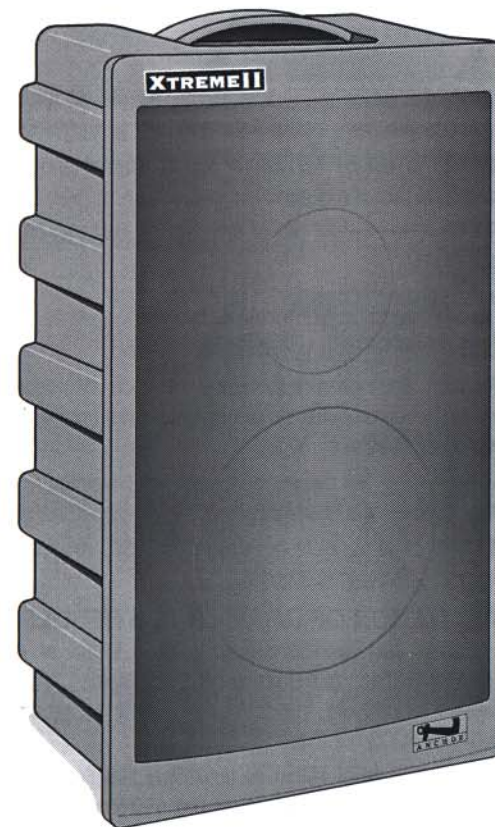
Troubleshooting Guide

Having trouble with the sound system?

<i>Condition</i>	<i>Possible Solution</i>
No sound (power LED not lit):	<ul style="list-style-type: none">• Turn power (PWR) switch on• Replace fuse
No sound (power LED lights):	<ul style="list-style-type: none">• Check for output from source• Make sure all cables are completely plugged in• Increase volume control on input used
Distorted sound:	<ul style="list-style-type: none">• Check input cable connection• Lower input signal level
Excessive hum or noise:	<ul style="list-style-type: none">• Use shielded input cable• Use a balanced input

Having trouble with the wireless system?

<i>Condition</i>	<i>Possible Solution</i>
No sound (TX ON indicator lights):	<ul style="list-style-type: none">• Set MUTE switch to on position• Turn up WIRELESS MIC VOLUME control• Plug a mic into belt-pack transmitter
No sound (TX ON indicator off):	<ul style="list-style-type: none">• Turn sound system on• Turn transmitter power switch on• Replace battery in transmitter



XTREME II

MPA-5600

Owner's Manual



Anchor Audio, Inc.

Tel (800) 262-4671 or (310) 784-2300 • Fax (310) 784-0533

www.anchoraudio.com

100-0112-000 / Revision A, 10/01





Important Safeguards



CAUTION: To reduce the risk of electric shock, do not remove the cover. No user-serviceable parts inside. Refer servicing to qualified personnel.

WARNING: To reduce the risk of fire or electric shock, do not expose this equipment to rain or moisture.

CAUTION: To reduce the risk of fire, replace only with the same type fuse (see specifications).



ATTENTION: Pour éviter les risques de choc électrique, ne pas enlever le couvercle. Aucun entretien de pièces intérieures par l'utilisateur. Confier l'entretien au personnel qualifié.

AVIS: Pour éviter les risques d'incendie ou d'électrocution, n'exposez pas cet article à la pluie ou à l'humidité.

ATTENTION: Pour diminuer le risque d'incendie, remplacer par des fusibles de même type (voir caractéristiques).

EXPLANATION OF GRAPHICAL SYMBOLS ON UNIT

The lightning flash with arrowhead symbol, within an equilateral triangle, is intended to alert you to the presence of uninsulated "dangerous voltage" within the product's enclosure, that may be of sufficient magnitude to constitute a risk of electric shock to humans.

The exclamation point, within an equilateral triangle, is intended to alert you to the presence of important operating and maintenance (servicing) instructions in the literature accompanying the unit.

EXPLICATION DES SYMBOLES GRAPHIQUES

Le symbole éclair avec point de flèche à l'intérieur d'un triangle équilatéral est utilisé pour alerter l'utilisateur de la présence à l'intérieur du coffret de "voltage dangereux" non isolé d'ampleur suffisante pour constituer un risque d'électrocution.

Le point d'exclamation à l'intérieur d'un triangle équilatéral est employé pour alerter les utilisateurs de la présence d'instructions importantes pour la fonctionnement et l'entretien (service) dans le livret d'instruction accompagnant l'appareil.

DATE OF MANUFACTURE

The date of manufacture of this Anchor Audio product can be determined by the eight digit serial number code. The 5th digit from the right denotes the year, the 6th digit from the right (letter) denotes the month (A=Jan, B=Feb, etc.) Example: "MPA5600JIO983" states that the unit was manufactured in October of 2001.





Specifications

MPA-5600

Rated power output:	Stand-alone	w/MP-5601 companion
low frequency amp:	90 watts	125 watts
high frequency amp:	40 watts	55 watts
Max SPL @ rated power:	116 dB music mode, 123 dB project mode	
Frequency response:	80 Hz - 15 kHz (project mode: +7 dB from 2-12 kHz)	
Bass/Treble control:	8 db cut/boost @ 100 Hz, 8 kHz	
Line input:	1/4" phone, Hi-Z, unbalanced	
Mic input:	XLR female, Lo-Z, 15 VDC phantom power	
Balanced input:	XLR female, switchable mic/line level 15 VDC phantom power (switchable)	
Sensitivity for rated output:		
unbalanced line:	-18 dBV (125 mVrms)	
balanced mic:	-58 dBV (1.25 mVrms)	
balanced input:		
mic:	-58 dBV (1.25 mVrms)	
line:	-15 dBV (175 mVrms)	
Line output (post fader):	XLR male, 600Ω, active balanced	
Speaker Output:	4-pole Neutrik Speakon® jack for use with Anchor MP-5501	
AC power requirements:	110 - 125 VAC, 50/60 Hz, 250 watts max. or (factory configurable) 210 - 240 VAC, 50/60 Hz, 250 watts max. (250 watts maximum)	
Dimensions (HWD):	22.5 x 13 x 10", 57 x 33 x 26 cm	
Weight:	35 pounds, 16 Kg.	

Specifications subject to change without notice.

Thank you for choosing an Anchor® Audio portable sound system! Our products incorporate state-of-the-art design, and the finest quality of materials and workmanship. We're proud of our products and appreciate the confidence you've shown by selecting an Anchor Audio system.

Please take a few minutes to review this Owner's Manual. We've incorporated several unique features into our products, and your knowledge of how to use them will enhance the performance and your enjoyment of our system.

David Jacobs, President on behalf of all Anchor Audio employees



Quick Use Guide

The Xtreme is an AC-powered portable sound system optimized for applications requiring extremely loud, clear sound. It has several signal input options, and a line output to connect to other systems. The Project mode allows you to specify use in either speech applications (indoors or outdoors), or standard applications (music and indoors).

You'll need a microphone or some other input source before you get started.

Here's how easy it is to use

1. Set unit on floor, table or speaker stand in front of audience.
2. Set all input level controls to minimum, Bass and Treble to 12:00 position before turning power (PWR) on.
3. Plug a microphone into Mic In or Balanced Input jack (XLR); the input level (blue button) should be in the "in" position. Or, plug an audio source into Line In or Balanced Input jack. If using Balanced Input jack, the input level should be in the "out" position.
4. Plug the power cord in. Press PWR on (the red LED near the switch will light).
5. Slowly increase the level control adjacent to the Input jack used to desired volume.
6. For speech applications, Project should be "on" to overcome ambient noise. For standard applications (music and indoors), Project should be "off."
7. Adjust Bass and Treble controls for desired sound quality.

To operate the WIRELESS MIC system on wireless models, see "Wireless Operation" on pages 15 and 16 of this manual.

"Sound" Advice:
Problems?
Consult the
Troubleshooting
Guide on the
back page of
this manual.



Getting Started

"Sound" Advice:

Save the shipping carton and packing materials. They were specially designed to ship your unit safely.

Inspection and inventory of your system

Each Anchor Audio sound system product is carefully inspected at the manufacturing facility and packed in a special carton for safe transport. Check unit carefully for damage which may have occurred during transit.

Inventory

- Xtreme sound system
- Warranty registration card
- Wireless mic/transmitter (*with wireless option only*)

All damage claims must be made with the freight carrier.

Notify the freight carrier immediately if you observe any damage to the shipping carton or product. Repack the unit in the carton and await inspection by the carrier's claim agent. Notify your dealer of the pending freight claim.

Returning your unit for service or repairs

Should your unit require service, contact your dealer or our Customer Service Department at (310) 784-2300 to obtain a Return Authorization (RA) number. All shipments to Anchor Audio must include an RA number and be shipped prepaid. C.O.D. shipments will be refused and returned at your cost.

Warranty registration

Please fill out the warranty card immediately and return it with a copy of your invoice to Anchor Audio's Customer Service Department. This will activate your limited six year warranty.



Accessories

MIC-90 Handheld Microphone

Anchor Audio's dynamic, balanced, low impedance microphone with unidirectional pick-up pattern. It features an on/off switch and comes with a 20' cable and mic clip.

SS-550 Speaker Stand

Made of heavy duty structural aluminum.

VL-45 Storage Cover

Heavy duty cover for the Liberty Xtreme.

MP-5601

Unpowered companion speaker

SC-100NL

100' cable for MP-5601

EX-50M Microphone Cable

50' mic extension cable.

MSB-201 Microphone Stand and Boom

Microphone floor stand with 33" adjustable boom.

FL-4500 Admiral Lectern

Floor model lectern, with center console, to accommodate a Liberty sound system. It has a shock-mounted mic input.

EX-50PP Line Cable

50' shielded line cable; 1/4"-phone connectors on each end.

EX-50XFP Line Cable

50' shielded line cable; XLR female to 1/4"-phone connectors.

Wireless Operation

Replacing the transmitter battery

Note: The transmitter power switch must be in the OFF position!

HANDHELD: Unscrew the battery compartment cover on the lower end of the microphone. Install a fresh 9 volt alkaline battery* and replace the cover.

BODY-PACK: Press the "OPEN" end of the battery cover, slide it back and lift the cover. Install a fresh 9 volt alkaline battery.*

Be sure to observe proper polarity. Close the cover.

Operating the wireless microphone system

The audio signal from the built-in wireless receiver is fed into the mixing bus. The wireless mic may be used simultaneously with any of the other inputs.

Operating the wireless microphone system:

1. Set the wireless volume control to minimum.
2. Turn the sound system power switch ON.
3. Slide the transmitter power switch to PWR.

The sound system's TX ON indicator lights to indicate wireless signal (RF) is being transmitted and received.

4. Adjust the wireless control to desired volume level.

Caution: Harmful feedback may occur when walking in front of a sound system or speaker with a wireless microphone. Always point mic away from speakers.

Using the microphone ON/MUTE switch:

When set to the "ON" position, the mic operates normally. To prevent unwanted sounds from being picked up without turning the transmitter off, move switch to the "MUTE" position.

(The handheld mic/transmitter comes with a protective sleeve, which fits over the power and mute switches to prevent accidental movement during use. To install it, unscrew the battery cover and slide the sleeve onto the microphone handle. Replace the cover.)

"Sound" Advice:
*Duracell®
MN1604 or
equivalent.

WIRELESS
MIC VOLUME



tx on

CA

ON

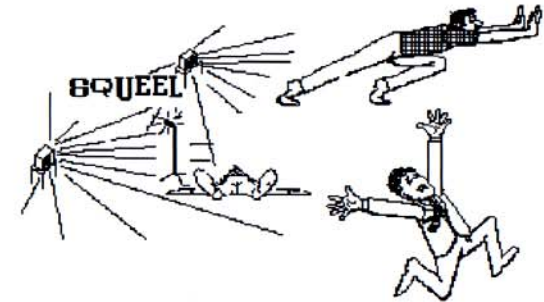


MUTE

Feedback Information

What causes feedback?

Feedback is a ringing, howling, or shrill sound that is self-generated by the sound system. It is the result of sound from the speakers being picked up by the microphone and then re-amplified by the system. This can form a self-sustaining loop, that can damage the sound system if allowed to continue for any length of time.



How to prevent feedback

**ALWAYS STAND BEHIND THE SPEAKER
WHEN USING A MICROPHONE!**

CAUTION: Feedback can damage your equipment and may be hazardous to your hearing. To avoid feedback, always make sure volume controls are at minimum before turning the unit on. If feedback occurs, immediately reduce the volume.

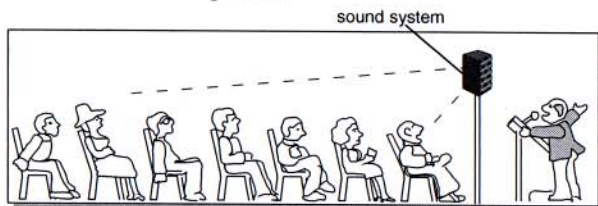
Set-Up

Setting up the Xtreme sound system

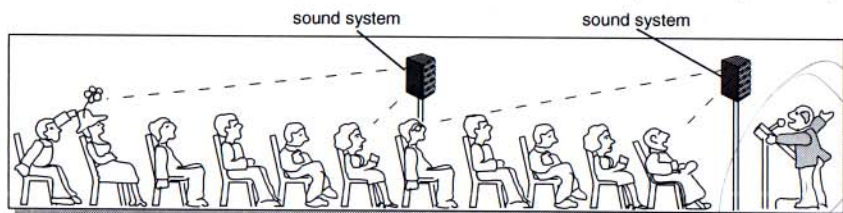
Positioning the speaker(s) is perhaps the most important consideration when setting up a sound system. You should survey the location prior to the activity and observe the seating arrangement and area of coverage.

Basic principles of sound system set-up:

- Position your sound system in front of the audience and ahead of the microphone.



- Elevate the sound system so the sound projects *over* the front listeners. This permits sound to reach the listeners in the rear, without overpowering those in the front. The Xtreme is easily and safely elevated by using Anchor Audio's SS-550 speaker stand.
- For long and narrow seating arrangements, position one sound system in front and off to one side of the audience. Then position a second sound system mid-way back on the same side of the audience. Direct the speakers diagonally across the audience (see Daisy Chain operation).



- Daisy Chain operation:** There may be times when the crowd size requires more than one sound system, or when part of the audience is in a separate listening area. To use multiple Xtreme systems, connect a shielded mic cable between the Balanced Line Out of the primary sound system to the Balanced Line In of the second system. Set the volume on the second system, and

"Sound" Advice:
The best sound system set-up is when the audience is not conscious of a sound system being used.

Wireless Operation

Setting up the wireless system

Checking the Frequency Code:

Before proceeding, first verify that the wireless frequency of your transmitter matches the frequency of the receiver installed in your Anchor Audio sound system.

- The control panel of the sound system should have the following label:



tx on



Frequency Code label

(Shure designates a one- or two-letter code, which corresponds to the wireless frequency at which the component operates.)

- The frequency code must match the code found on the transmitter, as described below:

HANDHELD: Unscrew the battery compartment cover on lower end of the microphone. Remove the battery (if installed) and check code on the label.

Label on **handheld** mic/transmitter

SHURE BROTHERS INC.
TX FCC ID: DD4L11
CANADA: 616 C9398
LX1 - **CA** 176.200 MHz

SHURE BROTHERS INC.
TX FCC ID: DD4L11
CANADA: 616 C9398
LX1 - **CA** 176.200 MHz

Label on **body-pack** transmitter

BODY-PACK: Check the code on the label located behind the belt clip.

- If the frequency codes do not match, locate the correct transmitter whose code matches the sound system.

About the transmitter battery gauge/indicator

Assuming a battery is installed in the transmitter, you can estimate the remaining operating time by first turning the sound system off, or setting the transmitter mute switch to the MUTE position. Then slide the power switch to the PWR position, and observe the color of the LED indicator(s) that light up:

Battery LED Indicator

Green
Green & amber
Amber
Red

*Operating Times

6 - 20 hours
4 - 6 hours
2 - 4 hours
< 1 hour

"Sound" Advice:
Operating times* using a fresh 9 volt alkaline battery, Duracell® MN1604 or equivalent.



Operation

button to eject disc from slot, and press CD PLAY button to load disc. If disc has not been taken away for 15 seconds, it will automatically be loaded into slot again.

7 - SKIP TRACKS-FORWARD/FAST FORWARD

Press + button once to advance disc to next up track, track number will appear on display screen. Hold down + button once to fast forward the track, track number will appear on display screen.

8 - SKIP TRACKS-BACKWARD/FAST BACKWARD

Press - button once to backward disc track, track number will appear on display screen. Hold down - button once to fast backward track, track number will appear on display screen.

14 - PLAY THE DISC

If disc already been loaded, CDIN will appear on display screen. Press CD PLAY button to start play disc.

15 - TOP: Select the first track directly

In CD mode, press TOP button, the first track will play.

16 - SCAN: preview track from disc

Press SCAN button once for track introduction, the first ten seconds of each track on the disc will play. To choose the track number, press SCAN button again while play is on the desired track. SCAN will appear on the display, then press SCAN button again to secure.

17 - REPEAT: Repeat same track

Press RPT button to repeat the same track continuously, RPT will appear on display screen.

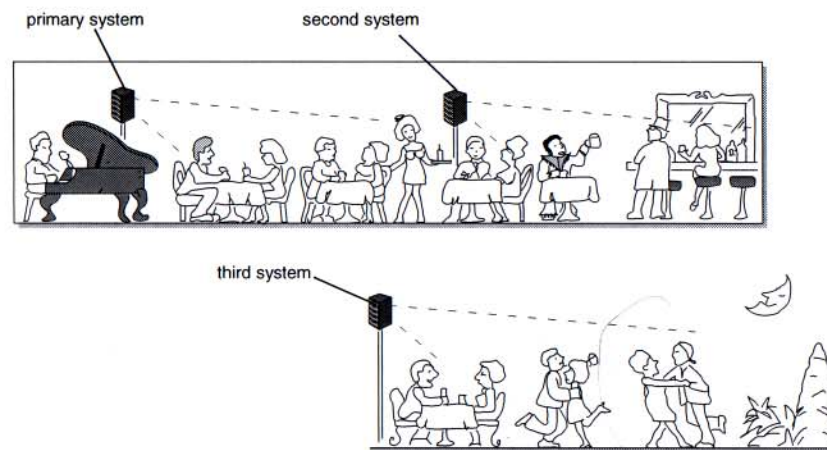
18 - RANDOM: Play all tracks in random

Press RDM button to play all the tracks in random order, RDM will appear on display screen.



Set-Up

thereafter the volume of the primary Xtreme will control both units. For a more simplified configuration, connect the Speaker Out of the MPA-5600 to a MP-5601 using an SC-100NL. This will eliminate the need for ac power to the companion system.



Setting up difficult rooms

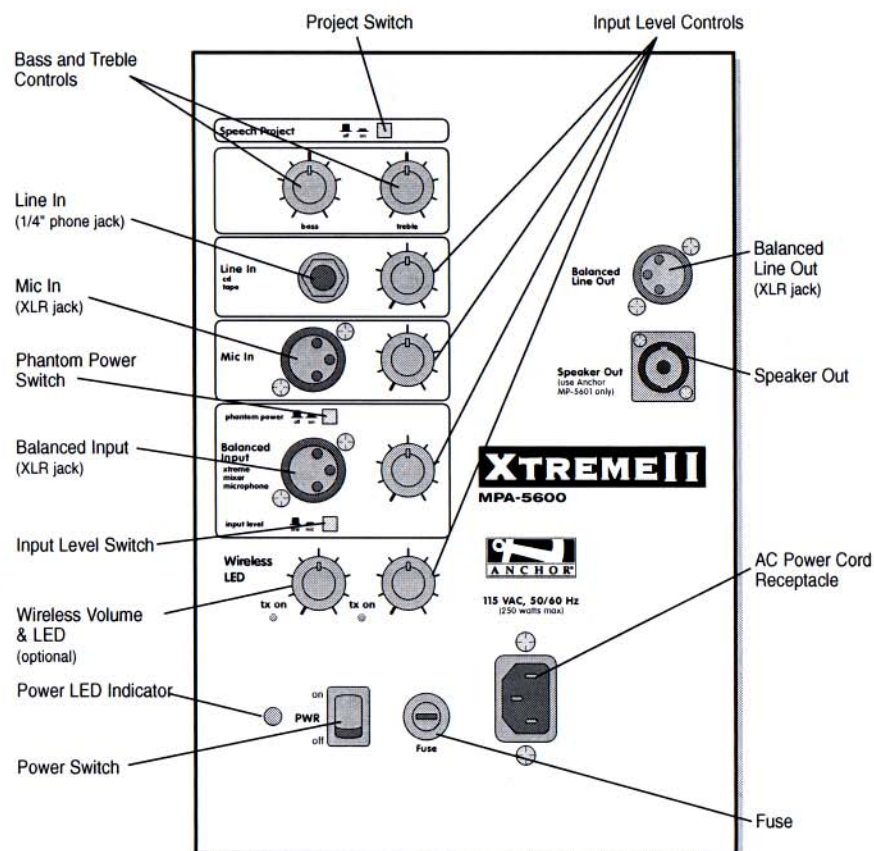
Reverberant rooms—those with acoustically-reflective surfaces like glass or concrete (such as a gymnasium)—can be troublesome when using a sound system. Proper care must be taken during set-up to minimize feedback, which is caused by the microphone ‘hearing’ the sound reflected back from the walls, floors and ceilings.

Techniques to reduce feedback in difficult rooms:

- The best microphones to use in feedback-prone rooms are handheld, CollarMic™ or headset boom types. They allow the mic element to be close to the mouth, so the system ‘sees’ more of the user’s voice and less of the room. The volume control can be turned down while still maintaining an adequate sound level—another important factor in reducing feedback.
- Orienting the speakers directly at the crowd and away from the walls (and the user), will help reduce feedback. Experimentation may be necessary.

“Sound” Advice:
A lapel mic will perform poorly under these conditions and should not be used.

Xtreme 5600 Control Panel



Operating the sound system

1. Set unit on floor, table or speaker stand in front of audience.
2. Set all input level controls to minimum, Bass and Treble to 12:00 position before turning power (PWR) on.
3. Plug a microphone into Mic In or Balanced Input jack (XLR); the input level (blue button) should be in the "in" position. Or, plug an audio source into Line In or Balanced Input jack. If using Balanced Input jack, the input level should be in the "out" position.
4. Plug the power cord in. Press PWR on (the red LED near the switch will light).

7 / 8 - TUNE/SEEK

In radio mode, press TUNE UP or TUNE DOWN button to change frequency by one step. Hold down TUNE UP or TUNE DOWN button to search for the next strong radio signal. Repeat this process until desired station has been found.

10 - AUX

As the AUX input is inaccessible to the user, a description of this button is not available. If LINE appears on the display, press either the BND or CD buttons to resume previous operation.

11 - PRESET STATIONS

Six numbered PRESET buttons exist which can store and recall stations for each of the FM and AM bands for a total of 30 programmable stations.

STORE A STATION

Select band to store program by pressing BND button. Select desired station pressing the UP or DOWN buttons. Press and hold desired memory R/Preset preset number until desired station appears on display screen.

12 - AUTOMATIC STORE/PRESET SCAN

To automatically store stations, press and hold down the APS button for more than two seconds. A total of 6 new stations will automatically be stored. Press any of the 1 to 6 preset buttons to recall stations.

To audition preset stations, press the APS button for less than 1 second. The radio will scan playing 10 second introductions of each station, when a desired station is reached press the APS button again to stop scan mode.

OPERATING CD PLAYER

13 - INSERT / EJECT CD

Insert a CD disc into slot with label side facing up. CD player will automatically play track once inserted. Press the EJECT



Operation

3 - FADER

Press SELECT button a forth time or until FAD appears on the display. Rotate the encoder clockwise for front speaker selection, counterclockwise for rear speaker selection.

4 - MUTE

Press the MUT button to lower the immediate listening level. (approx—40dB of level reduction) On the display screen, MUTE will flash on the display while in mute operation. Pressing MUTE/LOUD/SEL/+/— or rotating the encoder will return the listening level to previous setting.

5 - LOUDNESS

Press the LOUD button to emphasize the bass output. LOUD will appear along the top of the display indicating the loudness function is in operation. Press LOUD button again to defeat bass output emphasis.

6 - CLOCK SETTING/DISPLAY

To display the time, press the CLK button. The time will appear on the display for six seconds before returning to previous display.

To set the time clock, press the CLK button to display the time. Hold down CLK button, and at the same time, press the - or + button to adjust desired time. The clock operated on a 12 hour cycle with AM or PM indication.

RADIO OPERATION

(As soon as POWER has been turned off or the Xtreme unplugged, all of the following memory selections will reset to their default conditions.)

9 - BAND

Press the BND button to select desired radio band. Radio mode will be active upon power up if no CD is present. There are three FM bands; FM1, FM2, FM3 and two AM bands; AM1, AM2.



Operation

“Sound” Advice:
Refer to feature-specific info for more details on Xtreme’s functions and operation.

5. Slowly increase the level control adjacent to the Input jack used to desired volume.
6. For speech applications, Project should be “on” to overcome ambient noise. For standard applications (music and indoors), Project should be “off.”
7. Adjust Bass and Treble controls for desired sound quality.

Line In
CD
tape



Line In

The unbalanced Line In is used for playback of a tape or CD player, musical instrument, VCR or a similar line-level source. It may be combined with the other inputs for a composite output.

Note: All audio connections must be made with shielded cable, to avoid hum, buzzing or radio interference.

Mic In



Mic In

The balanced, low impedance XLR Mic In is used with a balanced microphone, to help prevent hum or interference when using long cables. It features phantom power for use with condenser-type microphones.

phantom power



Balanced Input
Xtreme mixer
microphone



input level



Balanced Input

The Balanced Input (XLR) jack can be set to allow microphone or line level sources, with or without phantom power (12 VDC).

A balanced microphone (Lo-Z) is preferred for use with long cables, to minimize hum and interference. Phantom power is required when using mics with a condenser element; in all other cases, the phantom power switch should be set to off.

tx on



Wireless Volume & LED (optional)

Refer to pages 15 and 16 for a complete description of operation.

Balanced Line Out



Balanced Line Out

The Balanced Line Out provides a balanced, composite signal of the inputs being used. You can use this function to record your presentation, or to “daisy chain” another powered sound system to the Xtreme for greater crowd coverage.

Operation



Project Switch

The Project switch allows you to customize the sound output of the Xtreme for a particular application:

Standard Setting (button out):

The Xtreme provides flat, full-range frequency response for music/singing or indoor vocal applications.

Project Setting (button in):

Frequencies in the vocal range (800Hz-12KHz) are boosted for added clarity and efficient projection. Use for outdoor functions, large crowds and speech applications.

"Sound" Advice:
To control feedback, try attenuating the Bass or Treble controls.



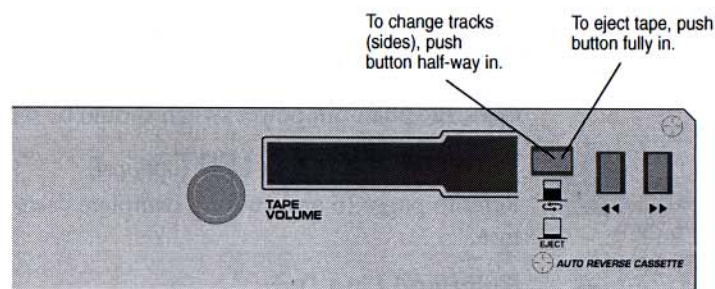
Speaker Out
(use Anchor MP-5601 only)

Speaker Out

Use this output to power the MP-5601 companion speaker for greater sound coverage/distribution.

Using the cassette tape player

The cassette tape player features auto reverse for continuous playback. The audio signal is fed directly into the mixing bus, so the sound can be mixed with other inputs of the Xtreme.

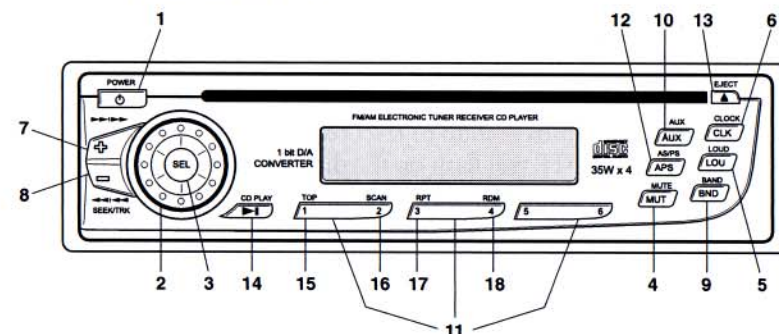


Note: Use only high-quality tapes. Periodically clean tape heads with a cleaning kit.

Operation

Using the CD player, AM/FM Radio

BASIC OPERATION



1 - POWER ON/OFF

Press POWER button to turn the unit on, BAND/CD PLAY button also can turn automatically directed to Radio/CD mode. Only POWER button can turn off the unit. As soon as POWER has been turned off or the Xtreme is unplugged, all memory selections will reset to their default conditions.

2 - VOLUME

Adjust Volume by simply rotating the encoder control clockwise for increased volume, counterclockwise for decreased volume.

3 - BASS

Press SELECT button once or until BAS appears on the display screen. Rotate the encoder clockwise for boost, counterclockwise for reduction.

3 - TREBLE

Press SELECT button twice or until TRE appears on the display screen. Rotate the encoder clockwise for boost, counterclockwise for reduction.

3 - BALANCE

Press SELECT button a third time or until BAL appears on the display. Rotate the encoder clockwise for right speaker selection, counterclockwise for left speaker selection.