



Student Work Placement Program (SWPP)

December 2nd , 2020



EXCELLENCE
IN MANUFACTURING
CONSORTIUM



Canada

This project is funded by the
Government of Canada's Student
Work Placement Program.

WILWorks

- EMC is a preferred partner for the Government of Canada to deliver the **Student Work Placement Program (SWPP)** to Canada's manufacturing, related sub-sectors and supply chain employers.
- **SWPP program objectives:** to drive systemic change in the skills development system at the post-secondary education level, to effectively align technical, foundational and “work-ready” skills of students with the skills required by Canadian employers by increasing access to more WIL opportunities for Canadian students.
- This program includes co-op placements, internships, mentorship programs or applied research projects.
- EMC's **WILWorks** will support 938 student placements over the next two years.



EXCELLENCE
IN MANUFACTURING
CONSORTIUM



Canada

This project is funded by the
Government of Canada's Student
Work Placement Program.

Wage Subsidy

WILWorks wage subsidy (Initial)

- 50% (up to \$5,000) per new placement
- 70% (up to \$7,000) for students from underrepresented groups:
 - ❑ Women in STEM
 - ❑ First-year students,
 - ❑ Recent immigrants (within last 5 years),
 - ❑ Visible minorities
 - ❑ Indigenous people, and
 - ❑ Persons with disabilities

Temporary Program Update

- As part of the GOC's COVID-19 Economic Response Plan, **employers will receive wage subsidy of 75% (up to \$7500)** for student placements up to 16 weeks.
- Students may work from home.
- Update in effect until May 31, 2021.

Program Summary

- Minimum of 6-week placement, maximum of 16-week placement
- COVID Relief Measures: March 2020 to May 2021, includes any students hired by a manufacturing, related sub-sectors and supply chain employers
- Application process through EMC's WILWorks platform
- Reimbursement by EMC at end of work placement
- Employers are responsible for student recruitment and selection

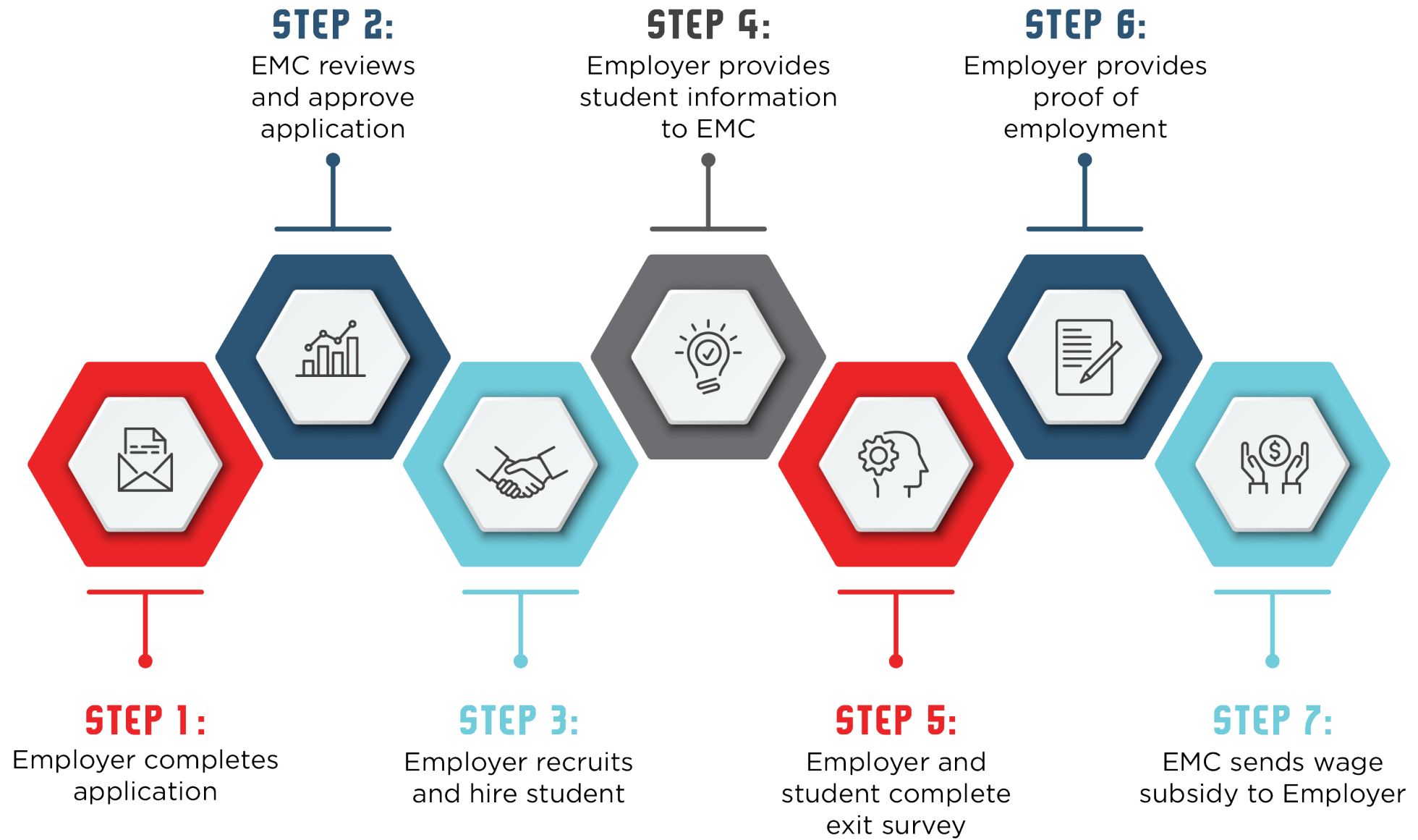


EXCELLENCE
IN MANUFACTURING
CONSORTIUM



Canada

This project is funded by the
Government of Canada's Student
Work Placement Program.



EXCELLENCE
IN MANUFACTURING
CONSORTIUM



Canada

This project is funded by the
Government of Canada's Student
Work Placement Program.

FAQs

Q1. What is considered a student work placement for SWPP- ESDC?

Co-op placements, mentorship programs, practicums, applied research projects internships.

Temporary measure: Students hired by manufacturers are eligible.



EXCELLENCE
IN MANUFACTURING
CONSORTIUM



Canada

This project is funded by the
Government of Canada's Student
Work Placement Program.

FAQs

Q2. Our co-op placements are longer than 16 weeks— can we receive more than one wage subsidy for the student?

Yes, Employers are able to apply for back to back placement terms for the same student, however, one application is required for each work term.

Q3. Does the student have to be in a manufacturing role to be eligible?

Students may be hired into direct or indirect roles (i.e. human resources, finance, graphic design, I.T., etc.)

FAQs

Q4. Are we eligible if we are participating in another federal wage program?

The balance of the wages cannot be funded by another federal program.

Q5. Can employers stack different funding and still be eligible for the SWPP funding?

Yes, partial government funds from provincial/territorial/municipal sources are permitted.



EXCELLENCE
IN MANUFACTURING
CONSORTIUM



Canada

This project is funded by the
Government of Canada's Student
Work Placement Program.

FAQs

Q6. Can I hire a recent graduate?

No, the student must be registered full or part time at a publicly funded post-secondary institution.

Q7. Can I hire a high school student?

No, this wage subsidy is only for post-secondary students. WILWorks for high school is presently being investigated.

FAQs

Q8. Can I hire a international student?

No, international students are not eligible for the program.

Q9. Can EMC help me to recruit a student?

EMC can connect employers with colleges, universities, polytechnics and CEGEPs.

Connect With EMC

www.emccanada.org



Wendy Gray
Senior Project Coordinator
wgray@emccanada.org
1-866-323-4362

Susan McLachlan
Project Coordinator
smclachlan@emccanada.org
1-226-220-6432



EXCELLENCE
IN MANUFACTURING
CONSORTIUM



Canada

This project is funded by the
Government of Canada's Student
Work Placement Program.

GRINDING OUT RESULTS SINCE 1997.



EXCELLENCE
IN MANUFACTURING
CONSORTIUM

your CANADIAN
MANUFACTURING
NETWORK 