

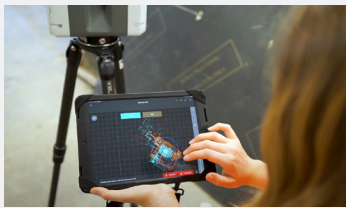
Capture

Leading-edge Capture

Utilising a variety of technology and methods, we specialise in the digital capture and survey of the built environment. Successful capture creates the foundation to deploy a 'digital twin' of building information for analysis, communication and optimal design deliverables.

During capture the design environment and protocols are created for the design team, aligning them to a single 3D spatial intelligence platform from the outset.

ASBUILT CAPTURE METHODOLOGIES



Laser Scanning

This is the process of capturing a High Definition Scan (HDS) to create point clouds. asBuilt founded its business on laser scanning and is recognised as a leader of the technology, its successful applications, and workflows.



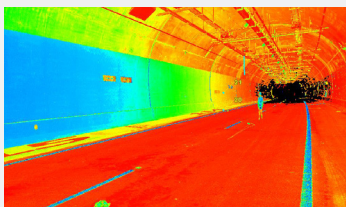
Drone Capture

We utilise drones (UAV's), high-resolution photography, and GPS to capture, survey and inspect worksites and physical assets. Drone capture provides an efficient method to cover large areas.



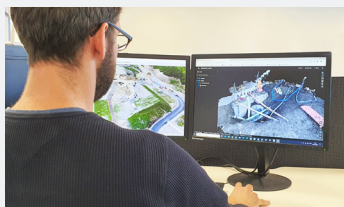
360° Imagery

We use 360-degree high resolution photography to create a virtual image record of an environment. We then spatially map this to other project information providing much richer data sets.



Virtual Survey

We replace a traditional survey plan with a digital survey. We use virtual survey marks to compare two data sets, extracting accurate data from digital capture records.



Processing

Using the latest capture software programmes, we stitch large point clouds and virtual surveys together to provide millimetre accurate reference points. These set the foundation for a digitally correct spatial model.