



S Y S T E M D E S I G N
AND **PARTS** GUIDE

J O H N D O W

Quality, Innovation, Solutions.

INDEX

System Design Service	3
Overhead Rail Exhaust Systems	4-6
Aluminum Exhaust Rail	4
Aluminum Rail Components	5
Sliding Crab Hose Reels & Drops	6
In-ground Exhaust Systems	7
Telescoping Hose Drops (Fixed)	8
Hose Reels (Fixed)	9
Heavy-Duty Motorized Hose Reel	10-11
Retractable Activation Micro-Switch	12
Accessories	13-17
Tailpipe Adapters	13-14
Exhaust Hose	15
Fans & Accessories	16-17
Portable Exhaust Extractor	18
Out-the-Door (Crushproof) Exhaust Systems	19
Windstorm HVLS Fans	20-22

Warranty

EuroVent Exhaust Products (except aluminum rail and neoprene seal)

EuroVent exhaust extraction products listed in this catalog (except aluminum rail and neoprene seal) which prove to be defective in material and workmanship within (1) one year from the date of purchase may be returned freight prepaid for repair, replacement or credit. Fan and motor warranty may be voided if the system is not installed per the manufacturer's drawing.

Limited Lifetime Warranty - Aluminum Rail & Neoprene Seal

JohnDow warrants to the original purchaser that the rail and neoprene seal will be free from defects in materials and manufacture for as long as the original purchaser owns the system. The warranty does not include normal wear and tear or failure due to misuse, carelessness or any accidental cause.

Windstorm Fans

5 years on all parts and components. Warranty period begins on date of shipment. Complete warranty coverage information is outlined in the installation manual.

Ordering Information

All orders must be placed through an authorized EuroVent distributor or sales representative. Most orders can be shipped within a few days of the original order date. However, it is highly recommended that purchase orders be submitted at least (4) four weeks prior to the installation date to ensure complete availability of product and timely shipment.

DESIGN SERVICE

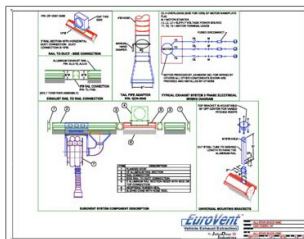
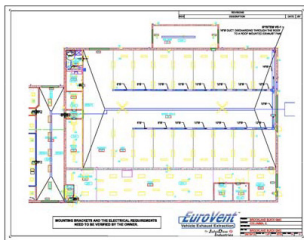
A properly designed and installed exhaust extraction system will guarantee the removal of harmful exhaust fumes as well as reduce energy consumption and air loss. Our experienced engineers can design an extraction system that meets your facility's unique requirements, budget and timetable. We can design systems for new facilities and renovations.

We're Fast. Once drawings and system requirement are submitted a design package and estimate is delivered within five working days. And, our design service is FREE.



Design Process

1. Following the initial inquiry we gather the details for the type of system and system requirements.
2. From CAD or other measured drawings provided by your contractor, architect, HVAC contractor or other source, our engineers go to work and calculate the performance parameters of the system.
3. A design package is prepared that includes a detailed CAD drawing showing the system layout along with a complete bill-of-materials, component details, and installation details.
4. A cost estimate and the design package is sent to the client for review and finalizing.
5. Modifications are made from the client's input.
6. Component parts and drawings are shipped, per the client's timetable, to the contractor for installation. We work closely with the contractor throughout the installation to make sure everything goes as planned.

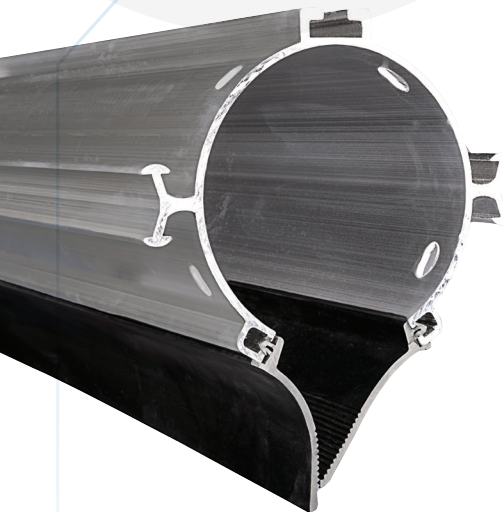


Send us your drawings and system requirements and let our design team go to work on your next project.

E-mail: customerservice@euroventexhaust.com

ONLY EUROVENT IS APPROVED BY ALL MAJOR VEHICLE MANUFACTURERS IN NORTH AMERICA.

ALUMINUM EXHAUST RAIL



Extruded aluminum rails come in standard 13' lengths and are connected together to form the exhaust duct for the overhead exhaust rail system.

A neoprene rubber seal is installed on the two sides of the connected rails. The rubber seal allows the EuroVent sliding hose reels or telescoping drops to freely travel along the rails.

An airtight seal is formed when the negative pressure from the exhaust fan pulls the neoprene seals together.

Assembled aluminum rails are mounted along the service bays 12' to 18' above the finished floor. Universal ceiling brackets are sold separately. (See the EuroVent Overhead Rail System Installation Guide for specific installation details).

Aluminum rails are available for both automotive and heavy-duty truck applications.



Overhead
Aluminum Rail
Exhaust System
with Sliding
Telescoping Drops



Overhead
Aluminum Rail
Exhaust System
with Sliding Crab
Hose Reels

PART NO.	DESCRIPTION	TYPE	LENGTH	WEIGHT
AUTOMOTIVE				
ALU-6	ALUMINUM RAIL	AUTO	6'6"	32.0 LBS.
ALU-13	ALUMINUM RAIL	AUTO	13'	64.0 LBS.
HEAVY-DUTY TRUCK				
ALU-6HD	ALUMINUM RAIL	TRUCK	6'6"	41.0 LBS.
ALU-13HD	ALUMINUM RAIL	TRUCK	13'	82.0 LBS.
2076-ESE	NEOPRENE SEAL	(BOTH)	VARIES	

ALUMINUM RAIL COMPONENTS

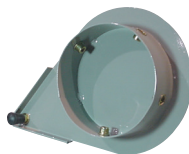
RAIL CONNECTORS & FLANGES



Rail Connection Flange

- Used for connecting aluminum rails together
- Connection bolts included

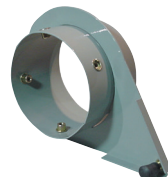
No. TL170A (Automotive)
No. TL230A (HD Truck)



Flange Stop

- Installed at the end of a rail system run
- Stops sliding crab or drop at the end

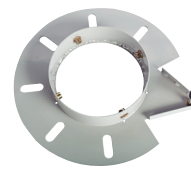
No. FL170A (Automotive)
No. FL230A (HD Truck)



Duct Connecting Flange

- Connects rail to other ducting

No. FCL170A (Automotive)
No. FCL230A (HD Truck)

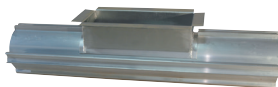


Fan Connecting Flange

- Connects "rail mount" fans to aluminum rail
- Only for use with AF-15 fans

No. FCA170AF (Automotive)
No. FCA230AF (HD Truck)

DUCT CONNECTIONS



Rail Vent-Tap Assembly

- Allows ducting to be connected in the middle of a rail system run
- 3' rail section fitted with a 5-3/4" x 14" flanged opening
- Use with EuroVent top or side duct connections (see below) or custom ducting

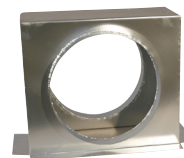
No. ALU-3FT-VTAP (Automotive)
No. ALU-3FT-VTAP-HD (HD Truck)



Top Duct Connection

- Use with Rail Vent-Tap Assembly
- For systems requiring exit point through the roof
- 10" diameter opening
- Attaches using 1/4" self-tapping screws

No. OF-VENT-TOP (Automotive)
No. OF-VENT-TOP-HD (HD Truck)



Side Duct Connection

- Use with Rail Vent-Tap Assembly
- Connects two or more system runs where exit point is through a sidewall
- 10" diameter opening
- Attaches using 1/4" self-tapping screws

No. OF-VENT-SIDE (Automotive)
No. OF-VENT-SIDE-HD (HD Truck)

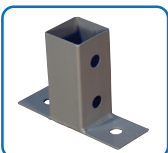
EuroVent Ceiling Brakes are designed to provide both flexibility and savings in installation time and labor costs. They are more affordable than conventional Unistrut type products but are just as versatile. Brackets can be easily customized on the job saving valuable time and money.

EUROVENT UNIVERSAL CEILING BRACKETS



Adjustable Ceiling Bracket

This allows for mounting on angles up to 30°. Simply clamp or bolt the bracket to any surface and secure the Mounting Tube. 6" x 6" mounting plate.



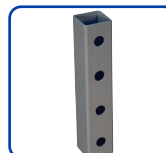
Rail Mount Ceiling Bracket

Designed for use with the "rail bolts" provided. Mounts directly to the top of the EuroVent rail. 6" x 2" mounting plate.



60" Straight Mounting Tube

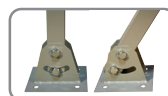
This 5" square tube has mounting holes at both ends. Can be cut to length or extended for longer applications.



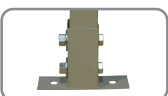
Mounting Tube Connector

Used to extend the Mounting Tube.

FOR OPTIMUM SECURITY, ONE BRACKET SHOULD BE USED EVERY 13' WHEN MOUNTING A EUROVENT RAIL EXHAUST SYSTEM.



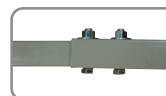
No. CB-CMA



No. CB-RM



No. CB-T60



No. CB-TC

SLIDING CRAB HOSE REELS & DROPS

With a EuroVent Overhead Rail Exhaust System there is no need for an exhaust drop at every service bay. The sliding hose reels and telescoping drops can be easily moved along the aluminum rail and positioned at any service bay they are needed. Four wheels on top of the crab carry the load while the bottom wheels serve as a guide.



Sliding Crab Hose Reels - Automotive

Features:

- The popular choice for most overhead exhaust systems
- Retractable reel keeps hose up and out of the way when not in use
- Provides high-volume air flow
- Equipped with 25' of fabric reinforced and crush resistant 4" exhaust hose
- 4" hose receiver with damper to accept EuroVent QuickLink tailpipe adapters
- Includes hose stop and pull chain with handle
- Available colors: black, blue, red



No. CAR-ALU-HV/100 Blue
No. CAR-ALU-HV/100B Black
No. CAR-ALU-HV/100R Red



Sliding Crab Hose Reels - Heavy-Duty Truck

Features:

- Designed for use in garages that service heavy-duty diesel vehicles
- High-volume air flow
- Equipped with 25' of 6" high-temp exhaust hose
- Includes hose stop
- Available colors: black, blue

No. CSA-ARL-6 (specify color choice when ordering)



Sliding Crab with EuroVent Telescoping Hose

Features:

- EuroVent Telescoping Hose is combined with the flexibility of the sliding crab design
- Three-piece telescoping exhaust hose retracts when not in use
- Extends to 18'-7". Retracts to 8'-2".
- Innovative break-away design prevents damage if hose is accidentally being pulled off of the sliding crab
- Comes standard with 4" x 6" rubber QuickLink tailpipe adapter
- Includes pull chain with handle
- Available colors: black, blue, red



No. CSA-EVT-3-QL Blue
No. CSA-EVT-3-QL-B Black
No. CSA-EVT-3-QL-T Red

IN-GROUND EXHAUST SYSTEMS

For service bay operations that prefer a concealed underground exhaust system. Designed for passenger cars and light and medium duty trucks. Superior quality and assembly. Made in the USA.

Pod and Pipe Saddle

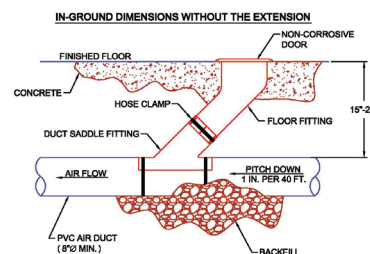
- Rotational molded LDP design
- Large pod opening accommodates oversize tailpipe adapters
- Precision telescoping connections for easy installation
- Saddle fits 8"-22" duct
- Extension tube available for deeper systems (sold separately)



No. IG-POD



No. IG-Saddle

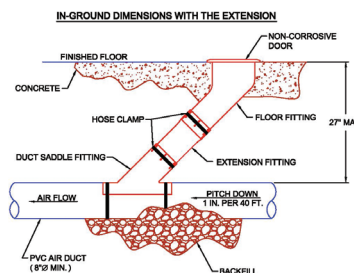


Aluminum Door and Frame

- High strength cast aluminum
- Supports 5000 lb. concentrated load
- Door is separate from pod - installs with surface mount screws
- Lay flat design with invisible hinge
- Can be rotated to open in any direction - full 180°
- Stainless steel hinge pins
- Low profile - only .51" (13mm) tall
- Also sold as a separate replacement kit



No. IG-DK



Pod Extension Tube

Roto-molded extension is designed for deeper systems where additional height is required.

- Extension tube provides 4.75" to 7" of vertical height adjustment
- Includes 6-1/2" gear clamp



No. IG-PODEX

Each system includes:

- Cast aluminum door assembly
- Roto-molded plastic 45° degree pod
- Roto-molded plastic pipe saddle
- 8' Crushproof Hose (3" or 4" diameter)
- Hose insertion guide
- Oval tailpipe adapter 2-1/2" x 6"



In-Ground Systems

No. EVIG-3 3" In-Ground Exhaust System
No. EVIG-4 4" In-Ground Exhaust System

In-Ground Accessories

No. IG-DK Replacement Door Kit
No. EVCP-83 3" x 8' Crushproof Hose
No. EVCP-84 4" x 8' Crushproof Hose
No. EVIG-1 Hose Insertion Guide
No. F475 Oval Tailpipe Adapter 2-1/2" x 6"

FIXED TELESCOPING HOSE DROPS

Used with traditional spiral exhaust duct telescoping drops can be installed at fixed locations along the service bays. The telescoping design eliminates winches, ropes and pulleys providing a clean look from bay-to-bay.

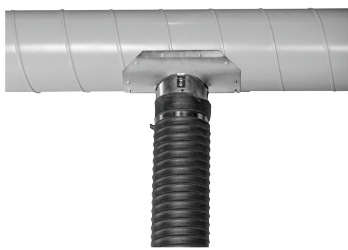


Features:

- Three-piece telescoping exhaust hose retracts when not in use
- Extends to 18'7". Retracts to 8'2"
- Innovative break-away design prevents damage to the overhead duct works if accidentally pulled off
- Duct saddle will adjust to various spiral duct sizes
- Swing gate assembly keeps hose retracted when not in use
- Choice of tailpipe adapter - standard (2-1/2" x 6") or QuickLink 4" x 6" adapter



Swing Gate Assembly



Duct Saddle



Breakaway Design

Choice of tailpipe adapter



QuickLink®



Standard

Each telescoping drop includes:

- 5" universal adjustable saddle
- 3-piece telescoping hose
- Swing gate assembly
- Tailpipe adapter

No. EVT-3 3" Telescoping Exhaust System

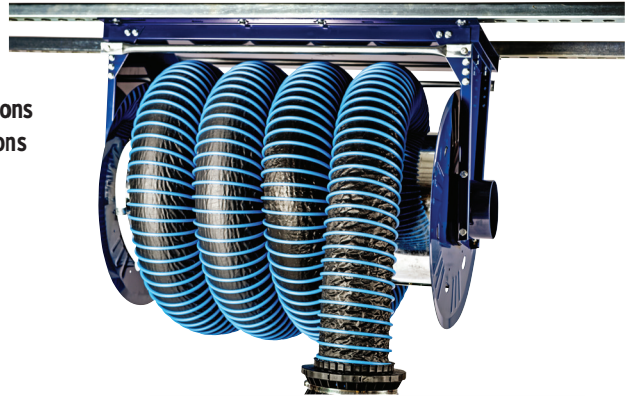
No. EVT-3-QL 3" Telescoping Exhaust System with QuickLink Tailpipe Adapter

FIXED HOSE REELS

Available for both automotive and heavy-duty truck applications, reels can be installed in a single location or part of a multiple reel exhaust system.

Features:

- Heavy-duty steel frame and drum
- Spring recoil ratchet design stops in convenient positions
- Designed specifically for exhaust extraction applications
- Reels can be mounted on wall, beam or ceiling
- Completely assembled and ready to install
- Durable powder coat finish
- Available colors: black, blue



Automotive Reel - 4"

Includes:

- 25' of fabric reinforced and crush resistant 4" diameter exhaust hose
- 4" hose QC-4D receiver with damper to accept EuroVent QuickLink® tailpipe adapters
- Hose stop

No. CAR-ALU-HD-4 Blue
No. CAR-ALU-HD-4-B Black

Heavy-Duty Truck Reel - 6"

Includes:

- 25' of high-temp 6" diameter exhaust hose
- Hose stop

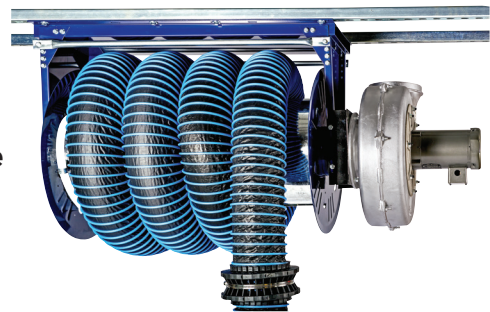
No. CAR-ALU-HD-6 Blue
No. CAR-ALU-HD-6-B Black

Fixed Reel and Fan Combination

EuroVent Fixed Hose Reels can be equipped with an exhaust fan to make a self-contained exhaust extraction system.

- Ideal for single bay applications
- Fan is mounted directly to the reel using No. FAR-10 Fan/Reel Flange
- Exhaust fan and flange are sold separately

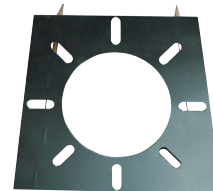
Check with your EuroVent design engineer to determine the correct fan configuration based on the application.



Fan/Reel Flange

Used to couple exhaust fan to EuroVent Fixed Hose Reels.

No. FAR-10



EUROVENT HEAVY DUTY MOTORIZED HOSE REEL

NO. EVT-8HD-36

EuroVent Heavy Duty motorized hose reels are design for exhaust fume extraction in professional heavy duty repair facilities. This is a fixed motorized overhead hose reel. A properly designed and installed exhaust extraction system will reduce energy consumption and air loss while guaranteeing the removal of harmful exhaust fumes for larger commercial vehicles.

Every EuroVent Heavy Duty exhaust system is customized to your facility and unique specification. Our experienced engineers will design a heavy duty extraction system that meets your facility's specific requirements, budget and timetable. We design systems for both new facilities and renovations. Once drawings and system requirements are submitted, a design package and estimate will be delivered within 5 business days. And - our design services are FREE.

APPLICATIONS

Applications:

These customized exhaust extraction systems have been developed for:

- diesel trucks
- military vehicles
- heavy equipment
- aircraft ventilation
- marine applications
- municipal vehicles

Features:

- 36" drum holds 35' of 8" hose
- Available with 600° up to 1,500° temperature rated hose
- Optional drum widths range from 36" to 60" depending on facility requirements
- Motorized hose reel also is equipped with a pendant style control unit
- Series of reels may be connected with ductwork to a central exhaust fan or supplied as a standalone unit with a direct mount fan
- High temperature coating with a powder coated frame
- Includes a side-mounted electric disconnect switch to cut power for reel servicing

Options:

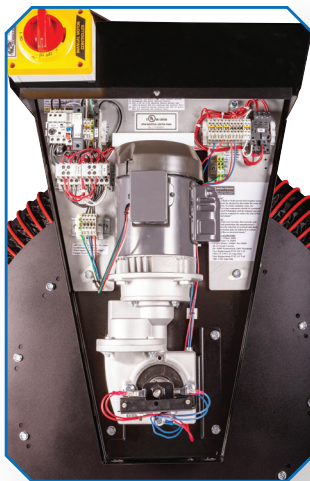
- Wall mount control panel
- Auto-run fan kit



**SIDE MOUNT
ELECTRIC
DISCONNECT**



ASSEMBLED IN THE USA



EuroVent Heavy Duty motorized hose reels conform to the Buy American Act and are assembled in the USA. All products are engineered, tested and assembled in the Barberton, Ohio manufacturing facility. The state of the art assemble facility follows a 100 page instruction and quality testing process prior to shipping any hose reel to its final destination. Quality is the #1 priority for all EuroVent products and for all custom exhaust systems. Assembling in the USA allows our custom systems to be installed in all government repair facilities including military, municipal, aircraft, construction and heavy duty.



HOSE REEL SPECIFICATIONS

Part Number	Color	Duct Connection Dia.	Drum Length	Overall Dimensions	Weight	Mounting Frame Structure	Hose Dia.	Hose Length	Temperature Rating
CAR-ALU-HD-8	Black	8" Diameter	36" Std	36" Wide x 39" High x 60" Long	237 Lbs. Less Hose Weight	Uni-Strut	8"	35' Standard	600 F Std.
			60" Optional		311 Lbs. W/8" Hose x 35' Long			50' Optional	1200 F Max.

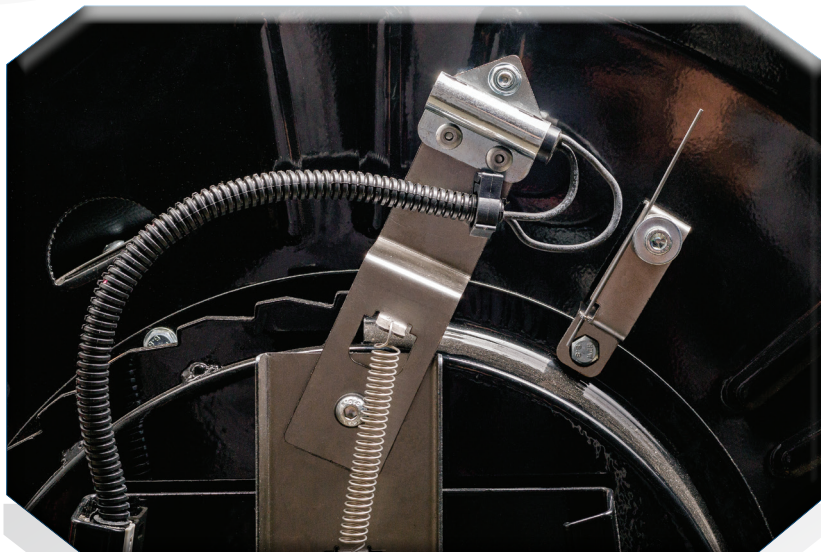
HOSE REEL DRUM INFORMATION

Horse-power	Phase	Voltage	Frequency	Full Load Amps	Enclosure	Max Load (Hose Wt.)		Time to Wind/	Unwind
1/4 HP	Single	120, 208/230	60 Hz	5.6	TEFC	108 Lbs.		35 sec (35' Hose) 50 Sec (50' Hose)	

CONTROL AND OPERATION

On/Off Function	Hose Wind/Rewind	Over Travel Limit Switch
Wall Switch Std.	2 Pushbutton Pendant	Preset at Factory. Field Adjustable During Installation
Auto Run Fan Kit Optional		

RETRACTABLE ACTIVATION MICRO-SWITCH



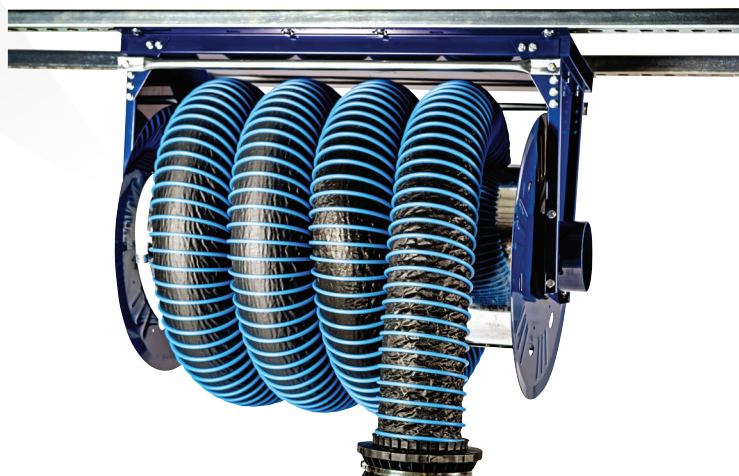
EuroVent is proud to offer another enhancement for exhaust extraction. The New Micro-Switch is an optional on/off switch mounted on retractable hose reels that is activated when the exhaust hose is retracted for operation. Simply put, the exhaust extraction system is triggered once the hose is pulled down from the reel and turned off when retracted back into the reel. This energy saving feature allows the system to run only when needed without having to power on with a single wall mounted switch. The optional micro-switch for spring retractable fixed hose reels is used in conjunction with our standard motor starter or Variable Frequency Drive (VFD).

Standard Motor Starter Features:

- 24V low voltage wire signals to motor starter to turn on/off fan
- Fan turns on when the hose is pulled down and turns off when the hose is retracted
- Can be wired in a series of reels to one motor starter
- Proven energy saving feature
- No longer one central on/off switch in shop

Variable Frequency Drive (VFD) Features:

- Pressure sensing control in VFD regulates fan speed depending on the number of hose reels in use
- Fan will increase and/or decrease in speed for more or less air flow needed
- Additional energy savings by not using full fan power unless needed.



TAILPIPE ADAPTERS

The EuroVent QuickLink™ Universal Tailpipe System makes changing and connecting tailpipe adapters quick and easy. A QuickLink™ receiver is installed on each exhaust hose of the extraction system. Each tailpipe adapter is equipped with a QuickLink™ connector.

EuroVent
QuickLink

- Guide pin and slot connection design
- Tailpipe adapters can be connected and disconnected in seconds
- No removing clamps or unscrewing adapters from the hose
- Flexible rubber adapters fit most tailpipe configurations

Universal Tailpipe Adapters

Superior quality rubber adapters are flexible and can be formed to fit most tailpipes.



No. QCN-2040
4" x 6"



No. QCN-2041
4" x 8"

Portable Tailpipe Adapter Stand

- For use with recessed, flush mount, or hard to reach tailpipe designs
- Equipped with QCN-2041 tailpipe adapter
- Adjustable for both height and angle



No. QCS-2041

4" Y-Hose Assembly

- Designed for dual exhaust systems
- Tailpipe adapters sold separately

No. QCY-4



Quick-Link™ Organizer Rack

This space saving rack keeps tailpipe adapters accessible and organized.

- Holds up to eight (8) QuickLink adapters and one (1) Y-Hose
- Measures 14" W x 52" H
- Can be mounted to any wall, post or column
- Available colors: black, blue, red
- Adapters and hose sold separately



No. QCR-1452 Blue
No. QCR-1452-R Red
No. QCR-1452-BK Black



TAILPIPE ADAPTERS

QUICKLINKTM
ACCESSORIES



4" Receiver with Damper Control

- Fits 4" hose and accepts all 4" QuickLink adapters
- Damper restricts air flow and excessive air loss

No. QC-4D



4" Connector

- Fits 4" tailpipe adapters
- Connects adapter to exhaust hose

No. TP-4-4S



3" Adapter for Crushproof Hose

Adapts 3" Crushproof® hose (FLT300) for use with any QuickLink tailpipe adapter or Y-Hose.

No. QC-3CP

SPECIAL
APPLICATION TAILPIPE
ADAPTERS



Stainless Steel Adapters

For use on high-temperature applications. Vice-grip makes for a secure tailpipe connection.

No. SS-3-VG For 3" Hose
No. SS-4-VG For 4" Hose
No. SS-6-VG For 6" Hose
No. SS-8-VG For 8" Hose



Ford Super-Duty Adapter

For use on Ford Super-Duty and other high-temperature applications.

No. FSDA-3 For 3" Hose
No. FSDA-4 For 4" Hose
No. FSDA-6 For 6" Hose

ADAPTER FOR
RECESSED
TAILPIPES



The clip designed funnel is suitable for pipes with interior diameter from 12" to 7.5" inside the bodies or for pipes under the chassis, not easy to connect. Light and ergonomic, it is especially made for double exhaust pipes.

No. QCN-EURO

EXHAUST HOSE AND ACCESSORIES

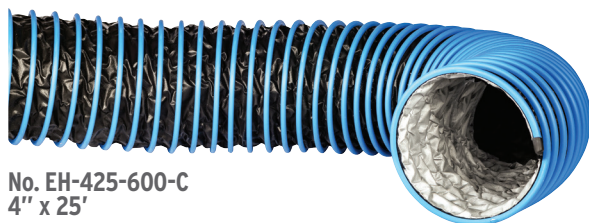


No. TPE326-25
4" x 25'

Standard Crush Resistant Exhaust Hose

Designed for automotive and light truck vehicle exhaust systems and hose reels

- Temperature Range to 400°F (200°C)
- Fabric reinforced
- Highly flexible and compressible
- Vibration resistant
- Crush resistant
- Good resistance to chemicals
- Special plastic-profile supporting spiral
- Fabric reinforced tape; wall EPDM/PP coated fabric
- Color: black



No. EH-425-600-C
4" x 25'

No. EH-625-600-C
6" x 25'

Hi-Temp Exhaust Hose

Used for exhaust extraction systems for diesel engines, trucks and construction machines

- Temperature Range to 600°F (300°C)
- Two layer hose wall with high-temp film liner and lightweight fiberglass fabric
- External helix of galvanized steel with additional abrasion protector
- Vibration proof
- Extremely flexible
- Super lightweight



Hose Stops

Available in three sizes.

No. FT75 For 3" Hose
No. FT100 For 4" Hose
No. FT150 For 6" Hose



Hose Supports

Hose supports are designed for use with a nontelelescoping single hose drop. Supports are positioned on the hose to keep it up off the floor when not in use.

Each support comes in two parts - one hook and one hanger. Available in 3", 4" and 6" hoses.

No. ATS75 For 3" Hose
No. ATS100 For 4" Hose
No. ATS150 For 6" Hose



Hose Balancer

For use with a non-telescoping single hose drop. Balancer retracts hose and keeps it off of the floor when not in use. For 4"-6" hose.

No. BG-25L



Bridge Clamp

Bridge clamp for attaching externally corrugated spiral hoses.

- Secure clamping with special bridge geometry
- Easily and quickly fitted
- Re-usable
- Stainless steel
- For use with EuroVent standard 4" exhaust hose

No. 2042



Clamp Protector

Covers bridge clamp for added protection.

- Polyurethane elastic
- Easily and quickly fitted
- Re-useable
- Highly abrasion resistant
- Good resistance to oil, gasoline and chemicals

No. 2043 4"
No. 2044 6"

EXHAUST FANS AND ACCESSORIES

EuroVent Exhaust Fans

- All fans are American made
- UL Approved for indoor & outdoor applications
- Air and sound performance tested prior to shipment (AMCA-210 -85 & 300-85)
- Rugged, lightweight and rustproof cast aluminum construction
- Direct drive models offer quiet operation and are maintenance free
- Belt-drive models offer system performance flexibility
- Three-phase motors are wired tri-voltage (208V/230V/460V)
- Single-phase motors are wired dual voltage (120V/230V)



AF Cast Aluminum Pressure Blowers

- High flow
- Corrosion and spark resistant aluminum wheels
- Light weight and rugged split cast aluminum housings
- Direct drive and belt driven



QBCS Backward-Incline Fans

- High flow
- Compact, heavy gauge steel housing
- Housing rotatable to four discharge positions

System requirements must be properly calculated in order to select the proper fan type and size. Failure to do so can result in poor system performance and/or premature fan wear. Please consult your EuroVent design engineer for assistance. EuroVent cannot guarantee or warrant the system performance if a non- EuroVent selected fan is used.

MOTOR STARTERS AND CONTROLS



Motor Starters

- Available upon request
- 1 - 5 HP
- Manual or magnetic starters
- Combination starters (starters w/disconnect)
- On/Off push button
- NEMA Type 1 enclosure (STD)
- Other NEMA enclosures are available
- Selector switches
- Timers
- Disconnects

No. 5HP-460V-3 Manual Start
No. 5HP-460V-3-R Remote Start
No. 5HP-460V-3-T With Timer



Variable Frequency Drive

- Control fan speed
- NEMA 1
- UL 508C, CE, CSA
- Overload protection

No. JDI-VFD



Pushbutton Pendant

- For 5HP motors

No. 5HP-PP

EXHAUST FANS AND ACCESSORIES



Fan Flex Connection

Reduces vibration from the fan to the ductwork

No. FAN-FLEX-6 6"
No. FAN-FLEX-8 8"
No. FAN-FLEX-10 10"
No. FAN-FLEX-12 12"
No. FAN-FLEX-14 14"
No. FAN-FLEX-16 16"
No. FAN-FLEX-18 18"
No. FAN-FLEX-20 20"

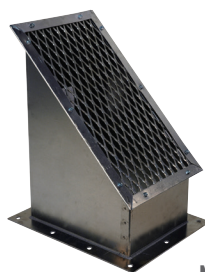


Fan Duct Transition Fittings

For QBCS Series Fans

- For QBCS series fans
- Duct fitting that transitions from the fan inlet diameter to the main duct diameter

No. QBCS-IN Inlet



- For QBCS series fans
- Duct fitting that transitions from the rectangular fan outlet to the main duct diameter.
- For outdoor mounted fans, a 45° hood with bird screen is provided.

No. QBCS-OUT Outlet



Vibration Isolator

- Bolt-Down vibration-damping mount
- Black Neoprene
- Steel Base
- 3/8"-16 Thread
- 130 lbs. Capacity

Vertical isolators used when hanging fans indoors are also available upon request

No. VIS-15



- For AF series fans
- 45° hood with bird screen

No. AF-15 Outlet

PORTABLE EXHAUST EXTRACTION



No. EV-5100

The practical and affordable solution for removing exhaust fumes from garage service areas. Portable extractor captures fumes from the vehicle and discharges them safely up to 30' away. Can be moved anywhere exhaust removal is needed.

Features:

- 3/4-HP fan produces 330 cfm air flow
- Fan is mounted in tough, roto-molded polyethylene "flow-through" case
- Mobile base makes the EV-5100 easy to position behind the vehicle
- Height position is controlled by a quick-release, spring loaded cam
- The discharge hose stores neatly when not in use
- Optional "Y" hose adapter available for dual-exhaust vehicles

SPECIFICATIONS:

DIMENSIONS	24" Wx24" Dx35" H
MOTOR	3/4-HP - 330 CFM
DISCHARGE HOSE	30'
ELECTRICAL OUTLET	110V
WEIGHT	86 LBS.

"Y" HOSE ADAPTER

- Converts EV-5100 for use with dual-exhaust vehicles and motorcycles
- Works with standard 3" exhaust hoses and "Y" hose adapters
- Does not include hose or tailpipe adapters
- Weight: 2 lbs.

Y-Hose and adapters are sold separately.



No. EV-ADPT

OUT-THE-DOOR EXHAUST SYSTEMS



For service facilities with multiple drive-in service bay doors an out-the-door system is a practical solution for exhaust extraction. Out-the-door systems can be used for cars, trucks with rear mounted exhaust pipes, and diesel.

For out-the-door systems to work properly a distance from the door to the vehicle needs to be under 25'.



No. JDH-250
2.5" x 11' Hose

No. JDH-300
3.0" x 11' Hose

Crushproof® Exhaust Hose

Designed for use with smaller gas vehicles up to SUV's and pickup trucks. The "FlareLok®" system allows multiple lengths to be connected without the need for a splice connector. All hoses are 11' long, and will withstand exhaust temps up to 600°F when used with a proper adapter and a fan assisted system.

Tailpipe Adapters



Twin Oval Adapters

No. F475: For oval/twin tailpipes up to 2.5" x 5.5".

No. F575: For oval/twin tailpipes up to 3" x 8".

Flush Mount Adapter



No. F675-SC

For flush mounted tailpipes. The industrial-grade suction cup will stick to any vehicle without damaging the finish and hold the adapter over the tailpipe, creating a capture shroud.



No. JDY250 2.5"
No. JDY303 3.0"
No. JDY404 4.0"
No. JDY606 6.0"

Y-Hose Assembly

Designed to convert a single exhaust hose into dual kit for servicing many of today's most popular cars and trucks. Assembly includes two (2) 4' sections of hose and a "Y" adapter.

Straight Adapters

No. F250: Fits 2.5" hose
No. F350: Fits 3.0" and 4.0" hose



Door Ports

Door ports are installed by putting one piece on each side of the door and then connecting them with screws.



Standard Door Ports

- For 2-1/2" Hose
- Rubber
- No. DF25
- For 4" Hose
- Aluminum
- No. ADF40



Locking Door Ports

Locking ports help secure the exterior of the building and also keep the port door from rattling when the wind blows or when the door is opened and closed.



No. 6130059 4"
No. 6130096 5"

HIGH VOLUME—LOW SPEED (HVLS) FANS



Windstorm HVLS Fans improve productivity as they cool the space in the summer and make it warmer and more comfortable in the winter.

Windstorm High Volume - Low Speed (HVLS) fans offer year round benefits by creating a comfortable work environment for employees while saving energy costs. They are used during the summer to cool spaces without air conditioning and to help air movement in facilities with air conditioning. In the winter they improve comfort and save energy by mixing warm air from the ceiling with colder air at the floor providing a more uniform temperature.

Windstorm HVLS fans range in size from 8' to 20' in diameter.

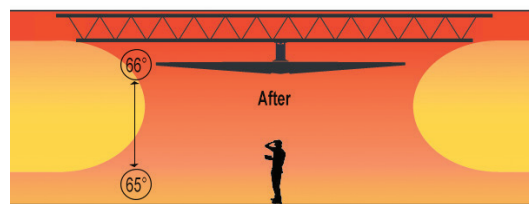
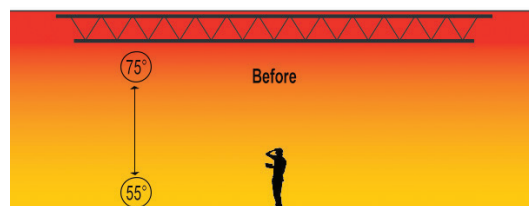
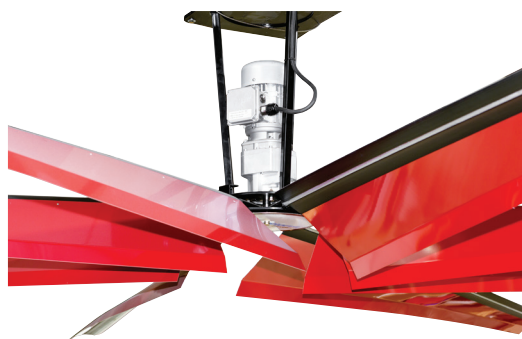
They are designed for large areas and can move a large volume of air at a slow speed creating a 3-5 mph indoor breeze. At low speeds HVLS fans use a fraction of the energy needed by conventional fans.

Summer Cooling

In a commercial facility without air conditioning an overheated work environment can result in lost productivity. As the effective temperature rises work output and accuracy suffer.

The 3-5 mph breeze created by an HVLS fan creates a cooling sensation. In the summer it can reduce the perceived temperature by as much as 10°F within the fan coverage area. The result is a more comfortable workplace and more productive and happier employees.

In air conditioned facilities an HVLS fan supplements the A/C system and allows for a higher thermostat setting. Savings can be as much as 6 percent for each degree.



Winter Heating

In the winter HVLS fans mix the warmer air that rises and is trapped at the ceiling with the colder air at the floor level. This process is called destratification. This results in a more uniform and comfortable temperature from floor to ceiling. Thermostat settings are maintained for longer periods of time reducing energy costs.



HIGH VOLUME—LOW SPEED (HVLS) FANS

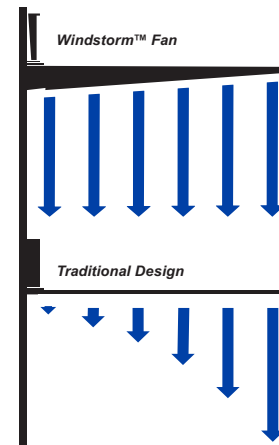
Engineering the Best

Windstorm fans feature a bigger airfoil that is more consistent at slower speeds with less turbulence. As a result more air can be moved more slowly in sensitive environments along with gained power efficiency.

No Dead Zone

Windstorm HVLS fans are engineered to make the most of every rotation of the blade. To do this Windstorm fan blades use an innovative “twist and taper” design. The result is a uniform airflow pattern along the entire length of the blade - and - a lighter fan that moves more air with lower horsepower and a lower RPM.

HVLS fans without “twist and taper” can only efficiently push air at the end of its blades. To compensate the fan must operate at higher RPM and higher horsepower motor. However, the airflow pattern will remain uneven, turbulent and coverage will suffer at low speed settings.



Coverage Area

Windstorm fans will create a breeze zone roughly 4X's their own size:

FAN SIZE	BREEZE ZONE	FAN SIZE	BREEZE ZONE
8 FT.	32' DIAMETER	16 FT.	64' DIAMETER
12 FT.	48' DIAMETER	20 FT.	80' DIAMETER

For assistance in selecting the correct number of fans and fan size for your facility contact our EuroVent engineers.

Fan Blade Color Choices

Fan blades are available in eight (8) stock colors. No surcharge applied.



HIGH VOLUME—LOW SPEED (HVLS) FANS

Variable Speed Controller

Included with all Windstorm fans is a standard variable speed controller. This allows you to adjust the fan to the right speed for your facility and operating conditions.

Optional controllers are available upon request:

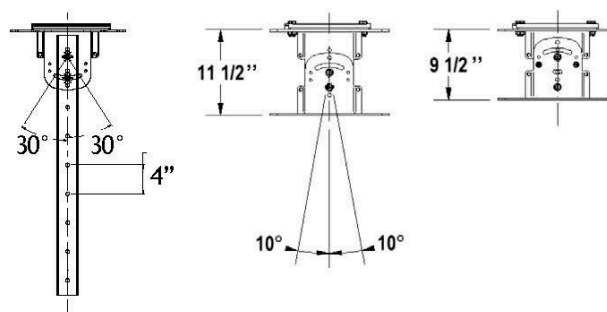
Multi-Fan Control Unit - controls up to four (4) fans from a single unit.

Mounting Extensions

For facilities with a sloped roof a mounting extension will be required. Extensions are available in 10", 36" and 72" lengths.

Item No.	Extension Length
WS-EX10	10"
WS-EX37.5	36"
WS-EX73.5	72"

MOUNTING EXTENSION



TECHNICAL SPECIFICATIONS

Item No.	WS-8F-VFD	WS-12F-VFD	WS-16F-VFD	WS-20F-VFD
Fan Diameter	8 ft.	12 ft.	16 ft.	20 ft.
Breeze Zone Dia.	28'-32'	42'-38'	56'-64'	70'-80'
Motor Power	0.5 HP	0.5 HP	0.5 HP	1.0 HP
Cast aluminum frame, 3-phase industrial induction TEFC, 208-230V and 460V				
Fan Weight	91 lbs.	109 lbs.	127 lbs.	161 lbs.
Maximum RPM	44 RPM	44 RPM	44 RPM	39 RPM
Maximum CFM	45,000 CFM	90,000 CFM	123,000 CFM	197,000 CFM
Sound Level dBA	<57 dBA	<57 dBA	<57 dBA	59 dBA
Best Industrial Spacing	42 ft.	63 ft.	84 ft.	105 ft.
Maximum Square Footage	4,250 sq. ft.	8,500 sq. ft.	12,750 sq. ft.	19,750 sq. ft.
Minimum Airfoil Clearances	Sides: 2 ft.	Sides: 2 ft.	Sides: 2 ft.	Sides: 2 ft.
	Ceiling Deck: 4 ft.	Ceiling Deck: 5 ft.	Ceiling Deck: 6 ft.	Ceiling Deck: 6 ft.

Specify color and voltage when ordering.

APPROVED BY VEHICLE MANUFACTURERS





By gathering as much information as possible -

both JDI and our customers benefit greatly.

So please communicate with us. Tell us what

is on your mind and how we can help. We look

forward to making you a part of the JohnDow family.

Customer Service: customerservice@johndow.com



A Division of JohnDow Industries

Main Office
JohnDow Industries -
World Headquarters
151 Snyder Avenue
Barberton, OH 44203

Toll Free: 800.433.0708
Phone: 330.753.6895
Fax: 330.753.6419

JohnDow.com

Member of these aftermarket trade associations:



Distributed by: