

HBJ Series Welding Positioner

Application

Automatic Welding Positioner is mainly used to place the workpiece in the best position for welding and assembling with the worktable elevating, rotation, tilting, which can be used for various automatic or manual welding, butt welding or face welding of pipe, as well as welding of shafts, discs, barrel, etc, with advantages of compact volume, good appearance, light weight and easy operation. The positioner can be supplied for interfacing with robot or welding manipulators, to realize the welding automation.

Main performance and specifications

This machine is a kind of our advanced welding positioner equipment, which is be researched and manufactured absorbing domestic and international advanced positioner equipment.

The worktable is tilted by motor, accurate and reliable positioning; it makes the work piece in perfect position for welding. The worktable adopts AC frequency conversion speed, so large range of variable speed and high precision, weld at need speed. Accordingly this device has advantages of compact structure, small cubage, beautiful shape, lightweight, convenient operating and so on. The machine can assort all kinds of auto welding or manual welding, improving welding quality, lessening welding labor and improve productivity.

This machine can be used at automatic welding or manual welding, such as pipe horizontal welding, tube end welding, axle, tray and barrel, it can be wildly used in the pressure vessels equipment, metallurgy, electric power, chemical machine etc industry.



Detailed of the product:

The welding positioner with Motorized rotation and motorized tilting. Rotation is 0-360 degree And tilting is 0-90 degree. Table size is 700mm for 1Ton and 1,300mm for 2Ton, with (6) T-slot on it.

With wired hand remote control ,it can adjust the roller forward and reversal, and there is a digital display to see the rotation speed. With 6m cable.

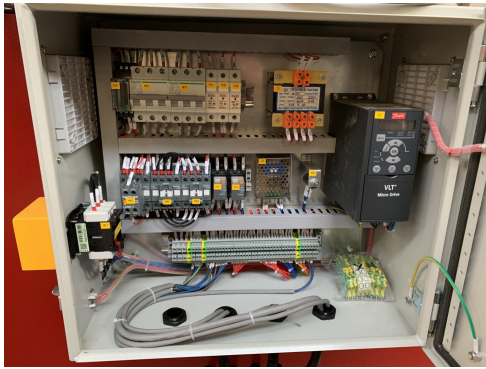
We also equip one foot panel for customer. The electrical design and cable wiring match with NZ and AU standard.

We can equip a Wireless remote for the operator.

E-Stop switch install side of the machine, to ensure the safety.

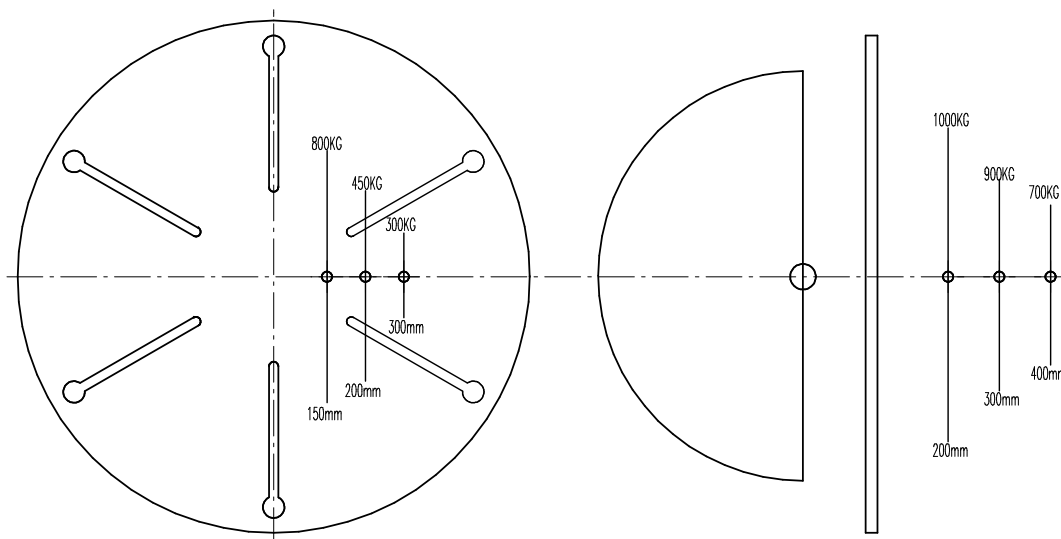
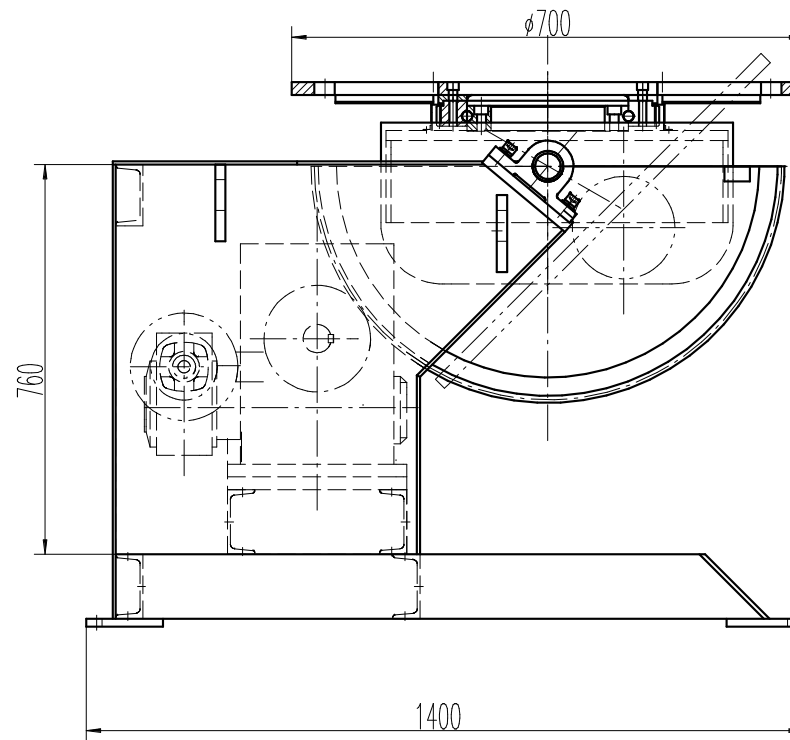
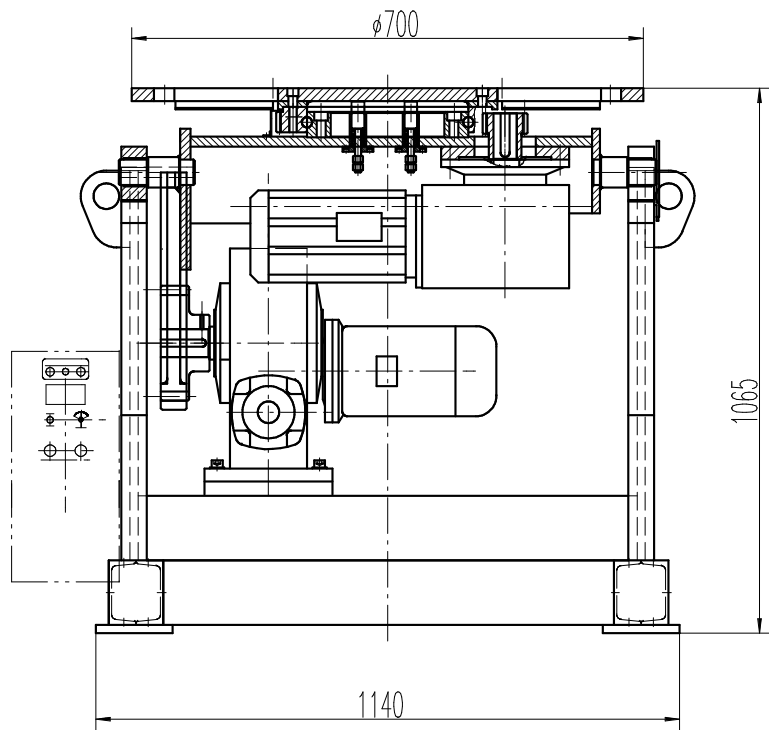


CE standard electrical design.

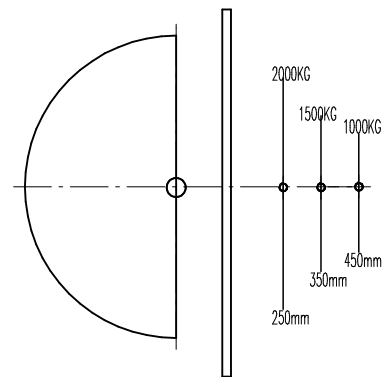
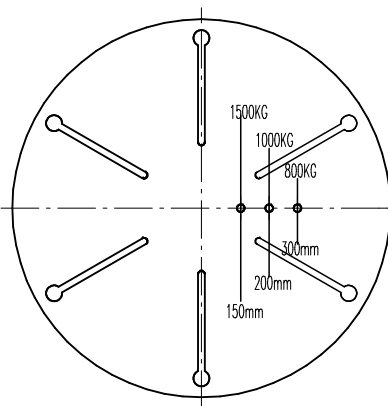
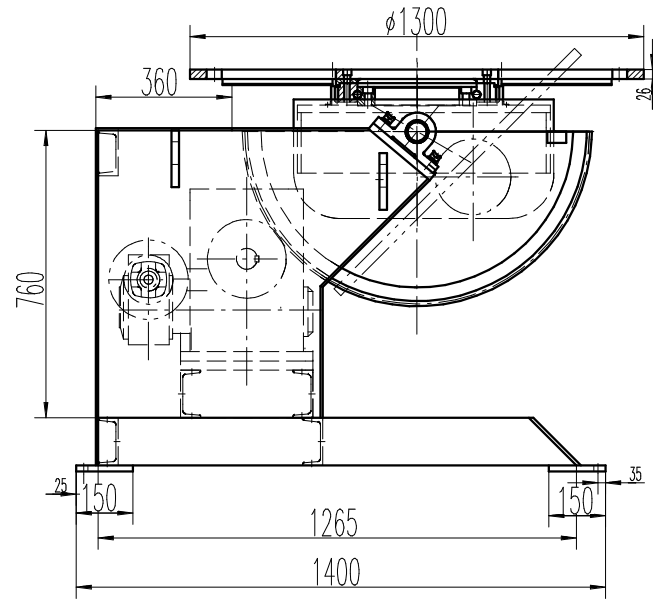
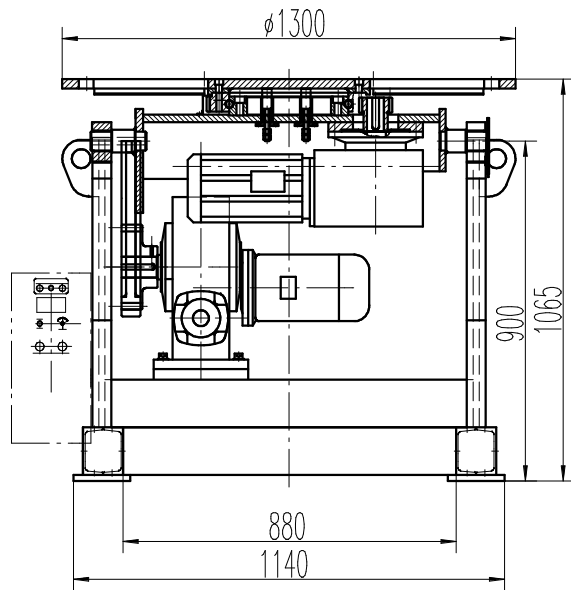


Main technical parameter:

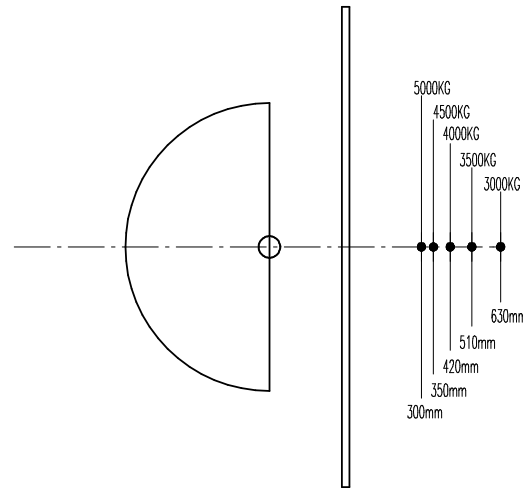
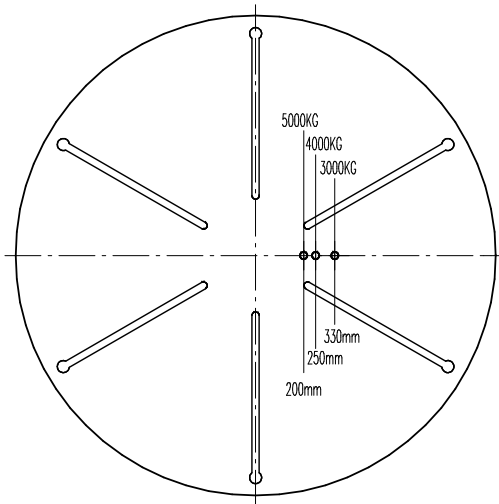
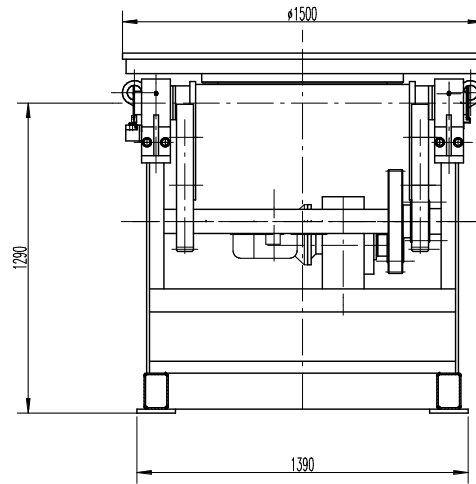
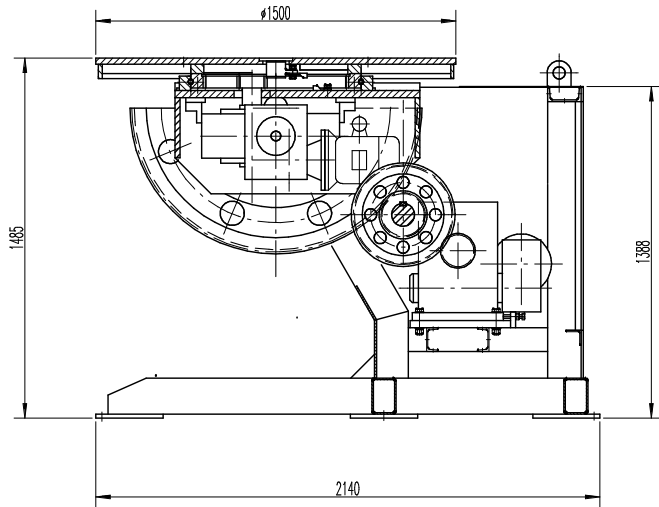
Model		HBJ-10	HBJ-20	HBJ-30	HBJ-50	
Rated load cap		1,000kg	2,000 kg	3,000 kg	5,000 kg	
Power	Rotation	0.75 kw	1.1 kw	1.5 kw	2.2 kw	
	Tilt	1.5 kw	1.5 kw	2.2 kw	3.0 kw	
Max Gravity height		250 mm	300 mm	300 mm	300 mm	
Max centroid eccentricity		200 mm	200 mm	200 mm	200 mm	
Table	Speed	Rotation	0.05-0.5 rpm	0.05-0.5 rpm	0.05-0.5 rpm	0.05-0.5 rpm
		Tilt	0.67 rpm	0.23 rpm	0.23 rpm	0.14 rpm
	Diameter		1,200 mm	1,300 mm	1,400 mm	1,500 mm
Tilt Angle		0-90°	0-90°	0-90°	0-90°	



1T Welding Positioner	HBJ-10			
			1	1:5
weldingsupplies.com				



2T Welding Positioner	HBJ-20			
		1		1:5
	weldingsupplies.com			



5T WELDING POSITIONER	HBJ-50			
			1	1:5
Weldingsupplies.com				