



WAVESENSE CONTACTLESS ACCESS CONTROL SOLUTIONS



WAVESENSE TECHNOLOGY ENABLES CONTACTLESS CALL FOR ASSISTANCE OR DOOR ACCESS—MITIGATING BACTERIAL AND VIRAL SPREAD IN HIGH TRAFFIC AND HIGH TOUCH AREAS.

FEATURES

- Provides visitors and staff a contactless, hygienic method to initiate communication or door access
- Initiate communication through deliberate gestures
- For IP Call Station or door access control installations
- Compatible with VOIP-200, VOIP-500, and VOIP-600 Series IP Call Stations
- Reduce bacterial and viral spread in high traffic applications
- WaveSense utilizes infrared proximity sensor technology
- Gesture detection range of 2 in. $\pm 10\%$
- IP66 ingress protection rating
- Available in flush or surface mount configurations
- Includes Power over Ethernet (PoE) splitter to facilitate installation
- Includes waving hand pictogram with “WAVE TO CALL” verbiage—no need for separate instructional signs or placards

Note: All prices and specifications are subject to change without notice. Talk-A-Phone, Talkaphone, Scream Alert, WEBS, and WEBS Contact are registered trademarks of Talk-A-Phone, LLC.

All rights reserved. All other trademarks mentioned in this document or website are the property of their respective owners and does not imply or indicate any approval, endorsement, sponsorship, or affiliation with such owners unless such approval, endorsement, sponsorship, or affiliation is expressly indicated.

APPLICATIONS



Existing Installations

Add either a flush mounted or surface mounted WaveSense to an existing IP Call Station.

- Deliberate gesture at the WaveSense unit triggers the IP Call Station to place a call
- Audio and/or video (if available) provided by the IP Call Station to validate entry
- Send DTMF remotely to output dry contact from IP Call Station to access control system



New Installations

VOIP-200 Series IP Call Station available with built-in WaveSense technology. *

- Deliberate gesture at the WaveSense-enabled IP Call Station triggers a call to be placed
- Audio and/or video (if available) provided by the IP Call Station to validate entry
- Send DTMF remotely to output dry contact from IP Call Station to access control system

* For more information, see VOIP-200 Series datasheet.

APPLICATIONS



Interface Into Your Own Access Control Solution

WaveSense provides dry contact for door access or contactless door opening when interfaced with an access control system.

Applying WaveSense technology with Call Stations helps to reduce bacterial and viral spread in high traffic applications such as:

- Commercial and office real estate
- Healthcare facilities (e.g., clinics, pharmacies, etc.)
- Parking facilities (e.g., garages, parking lots, etc.)
- Schools
- Daycare facilities

Schools



Daycare Facilities



Commercial & Office



Healthcare Facilities



Parking Facilities



Any application where a call station would be installed.

SPECIFICATIONS

	WAV-1-FM (FLUSH MOUNT CONFIGURATION)	WAV-1-SM (SURFACE MOUNT CONFIGURATION)
General Specifications		
Dimensions (W x H x D)	3.875 x 5.375 x 2.5 in. (95.25 x 136.5 x 63.5 mm)	4.0 x 5.625 x 2.875 in. (101.6 x 142.9 x 73.0 mm)
Weight	3.5 lbs.	4.0 lbs.
Operating Temperature	-4° F to 122° F (-20°C to +50°C)	
Ingress Protection (IP) Rating	IP66	
Construction	Faceplate: 316 stainless steel Enclosure: 18 Ga. Steel, zinc plated	Faceplate: 316 stainless steel Enclosure: 18 Ga. Steel, powder coated
Mounting	Flush mounts	Surface mounts
Power	IEEE 802.3af Power over Ethernet (includes PoE splitter). or Or sensor switch can be powered separately (12-24VDC, 0.5W max.).	
Sensor Switch		
Dimensions	1.10 in. (28 mm) diameter	
Sensor Technology	Infrared	
Gesture Detection Range	2 in. ±10%	
Output	Dry contact	
Other		
Warranty	2-year limited warranty	

All specifications are subject to change without notice.

ORDERING INFORMATION

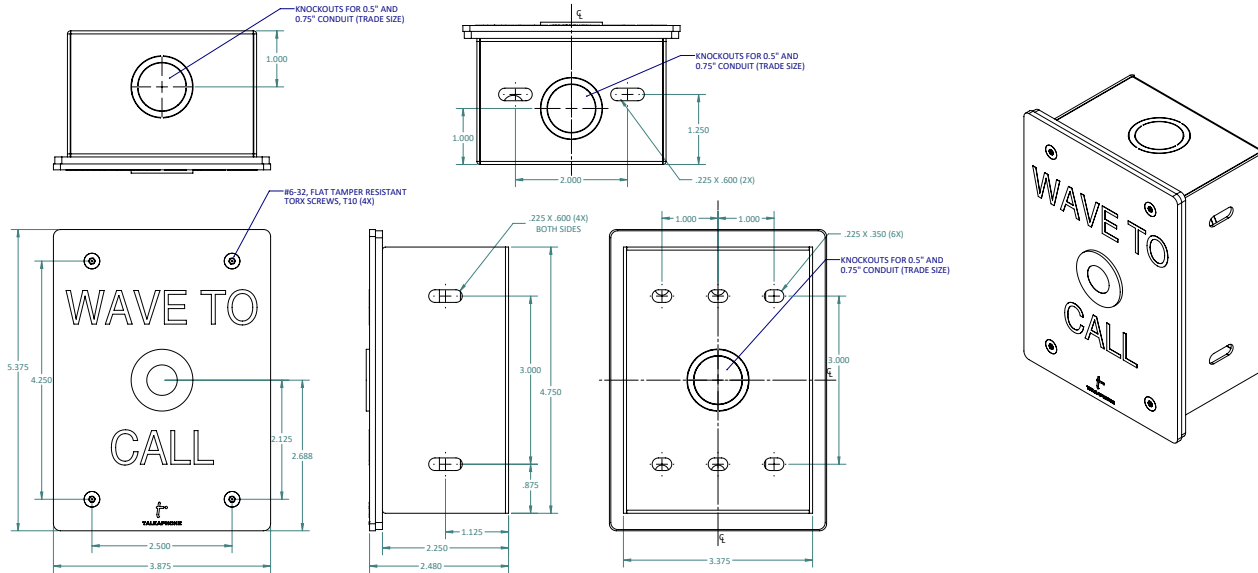
	Base Model	Mounting Option	Verbiage
	WAV-1	-FM Flush mount configuration	[Leave Blank] “WAVE TO CALL” verbiage
		-SM Surface mount configuration	-WTO “WAVE TO OPEN” verbiage
Example	WAV-1	-FM	

Note: WaveSense technology is also available as a built-in option on the VOIP-200 Series Compact IP Call Station. For ordering information, see VOIP-200 Series datasheet.

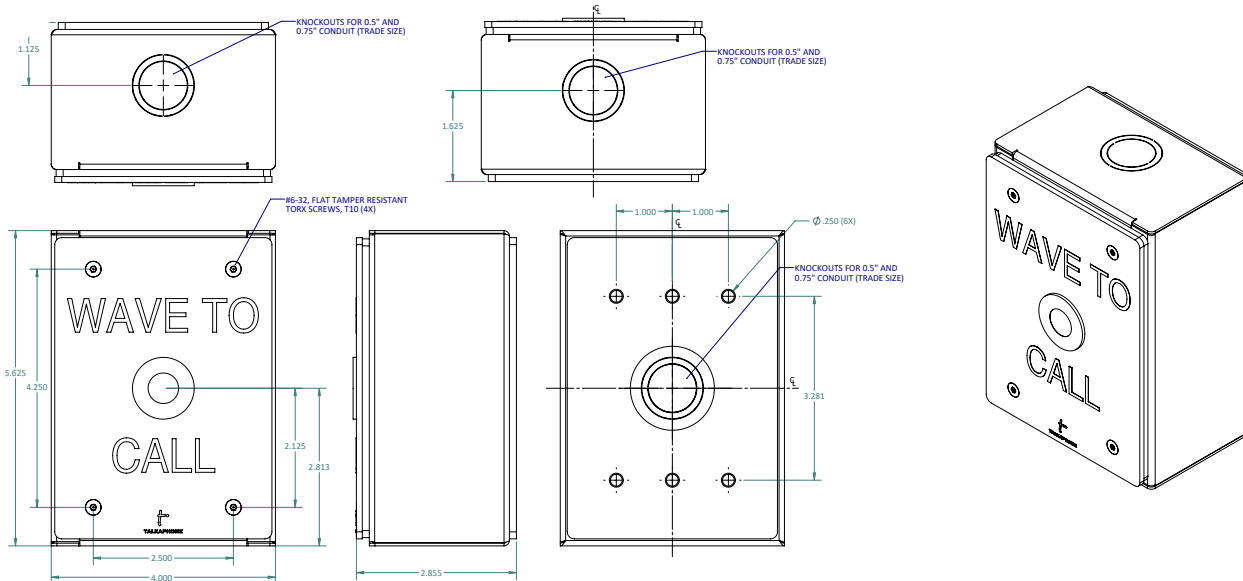
All specifications are subject to change without notice.

DIMENSIONAL DRAWING – WAV-1-FM

All dimensions are in inches and are provided for reference only.



DIMENSIONAL DRAWING – WAV-1-SM



THE LEADERS IN SECURITY AND LIFE SAFETY COMMUNICATIONS

Tel: 773-539-1100
Email: info@talkaphone.com
Web: www.talkaphone.com

7530 North Natchez Avenue
Niles, Illinois 60714

Terms of Use and Limited Warranty

This Product includes intellectual property and proprietary rights owned by Talk-A-Phone, LLC and/or its licensors. Your use of this Product confirms your agreement that Talk-A-Phone, LLC and/or its licensors retain all right, title and interest in and to all such property; that your rights are to access and use the Product for your internal business use only; that all Product elements will be maintained as confidential; and that the Product may not be rented, leased or lent to third parties, reverse engineered, decompiled or disassembled, or otherwise used for any purpose other than as an access device for your premises.

Talk-A-Phone, LLC warrants Talk-A-Phone Emergency Phone, Call Station, and Wide-Area Emergency Broadcast System equipment against any defects in material and workmanship, under normal use, for a period of twenty-four (24) months from date of installation, provided that Talk-A-Phone receives a completed "Installation Certification" certifying the date on which the system has been installed. An "Installation Certification" card is enclosed with every unit. In the event that no "Installation Certification" is received by Talk-A-Phone, the twenty-four (24) months will commence on the date of shipment by Talk-A-Phone. Warranty period for the metal elements of models in the GP Series Pedestals, MT Series Towers, MTE Series Towers, MT/R Series Towers, PM Series Pedestals, SM Series Surface Mounts, Via Series Mounts, and WM Series Wall Mounts is five (5) years, under the same terms and conditions. Warranty period for Area of Rescue Products is sixty (60) months, under the same terms and conditions. Warranty period for Intercommunication Products is twelve (12) months, under the same terms and conditions. If the Product is found by Talk-A-Phone to be defective within the warranty period, Talk-A-Phone's only obligation, and your exclusive remedy, is for the repair or replacement of any defective parts, provided that the Product is returned to us at 7530 N. Natchez Ave., Niles, IL 60714. Talk-A-Phone shall have no obligation to furnish or pay for the labor of any third parties or bear the expense of shipping defective Products for repair. In no event shall Talk-A-Phone or its licensors or suppliers be liable for any form of exemplary or punitive damages, or any special, indirect or consequential damages. TALK-A-PHONE EXPRESSLY DISCLAIMS ALL OTHER WARRANTIES, WHETHER EXPRESS, IMPLIED OR STATUTORY, INCLUDING BUT NOT LIMITED TO THE IMPLIED WARRANTIES OF MERCHANTABILITY OR FITNESS FOR A PARTICULAR PURPOSE. In no event shall Talk-A-Phone or its licensors or suppliers be liable for any form of exemplary or punitive damages, or any special, indirect or consequential damages. Your use of this Product constitutes your agreement to all of the foregoing terms.

THIS WARRANTY GIVES YOU SPECIFIC LEGAL RIGHTS AND YOU MAY ALSO HAVE OTHER RIGHTS WHICH VARY FROM STATE TO STATE. Further information is available at talkaphone.com/legal

Copyright 2021 Talk-A-Phone, LLC All Rights Reserved - Rev. 01/29/2021