



**THIS PRODUCT MUST BE INSTALLED IN ACCORDANCE WITH THE APPLICABLE INSTALLATION CODE BY A PERSON FAMILIAR WITH THE CONSTRUCTION AND OPERATION OF THE PRODUCT AND THE HAZARDS INVOLVED**

**CE PRODUIT DOIT ÊTRE INSTALLÉ SELON LE CODE D'INSTALLATION PERTINENT, PAR UNE PERSONNE QUI CONNAÎT BIEN LE PRODUIT ET SON FONCTIONNEMENT AINSI QUE LES RISQUES INHÉRENTS**

### **I. Introduction**

This manual is for the anchor bolt installation of an Emergency Phone Tower into a pre-existing concrete foundation. For instructions on installing the tower onto the anchor bolts, see tower installation instructions.

### **II. Contents**

Before beginning installation, make sure you have all the included components. Each **ETP-PDMK Series** package consists of the following bill of materials as summarized below:

<b>Qty.</b>	<b>Part Number</b>	<b>Description</b>
2	26315	Mounting Base Plate for Tower
16	42839	Heavy Hex nut - 0.75"-10
16	42840	Washer – 0.75"
4	42859	Bolt – Threaded 0.75"-10, 18" length
1	24717	ETP-MT / ETP-MTE Bolt Positioning Template [ <b>ETP-PDMK-2</b> only ]
1	24718	ETP-MT/R Bolt Positioning Template [ <b>ETP-PDMK-4</b> only ]

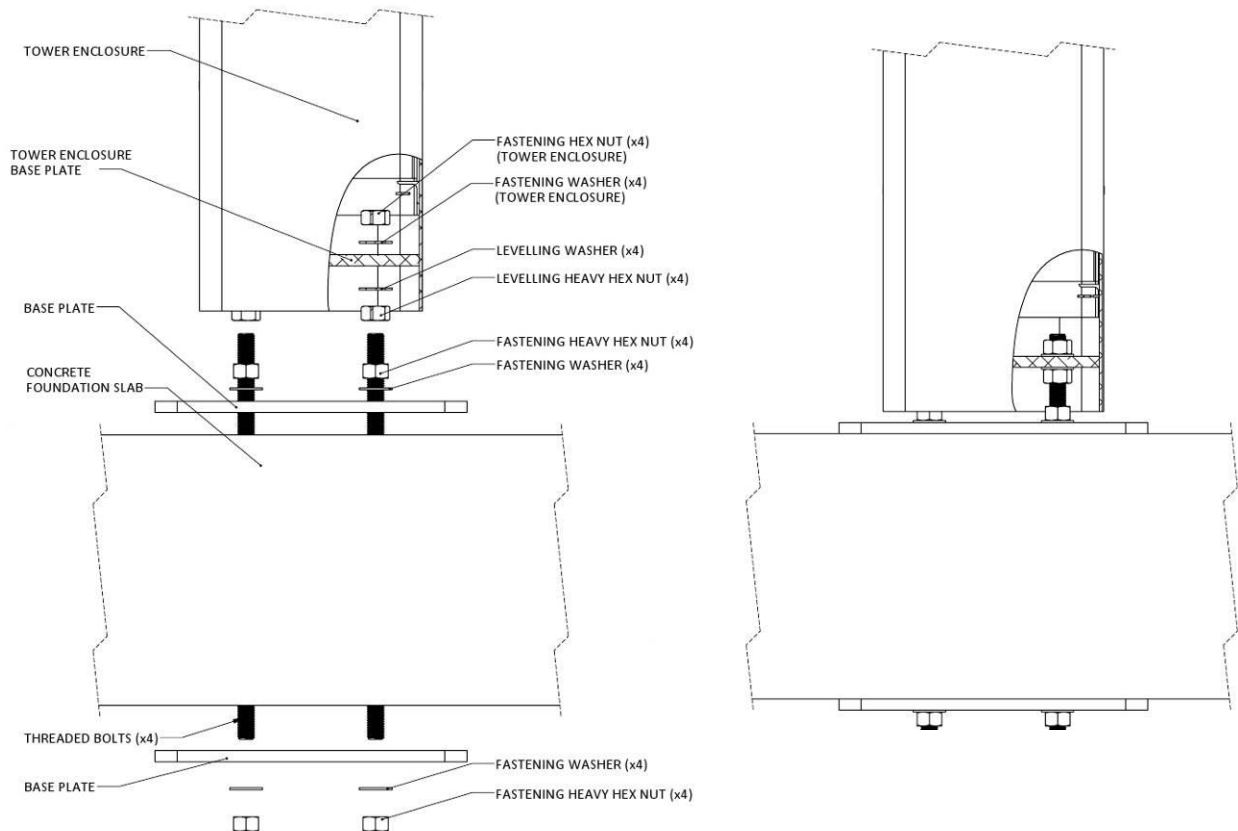
### **III. Physical Installation**

1. Drill four (4) clearance holes, through the pre-existing concrete slab/ foundation, using the provided bolt-positioning template. The holes should be clearance holes for a 0.75" diameter bolt (approximately 1.0" diameter).
2. If conduit will be brought through the center hole of either of the two plates, make sure to drill a clearance hole for the conduit.
3. Place one of the mounting base plates on the top end of the concrete foundation/slab with the vertical axis of the four holes aligned with each other.
4. Pass the four (4) bolts through the mounting base plate and concrete foundation/slab with approximately 5.0" of each bolt protruding above the mounting plate. Fasten each of the four (4) bolts to the mounting plate using one (1) washer and heavy hex nut for each bolt.

**NOTE:** Make sure you have at least 2.0" of each bolt protruding from the bottom end of the pre-existing concrete foundation/slab (depends on the height of the existing concrete foundation/slab).

5. Secure and fasten the mounting base plate to the bottom end of the concrete foundation/slab using one (1) washer and heavy hex nut for each of the four (4) bolts. Refer to **Figure 1**.
6. Fastening hardware for tower installation is provided as a part of the tower parts kit labeled as **TOWER PTS** or **TOWER PTS 24V**. Follow instructions included in those packages for the remaining installation of the towers.

**NOTE:** Make sure all connections meet National, Regional, and Local Electric Codes.



**Figure 1.** Installation Mounting Base Plates and Tower to a Pre-existing Concrete Foundation, Exploded and Assembled Overview