



ETP-MT Anchor Bolt Installation Instructions

I. Introduction

Note: This manual is for anchor bolt installation only. For instructions on installing the tower onto the anchor bolts, see the ETP-MT Tower Installation Instructions.

II. Contents

Before beginning installation, make sure you have all the included components. Each Tower consists of three packages. Package #1 is the anchor bolt kit labeled MT BOLT KIT. Package #2, is labeled TOWER PTS (or TOWER PTS 24V) and Package #3 contains the tower itself.

Anchor Bolt Install Kit

QTY	Part Number	Description
4	42838	J-Bolts
1	26301	Cardboard Template

Tower Install Kit (keep for use when installing the tower)

8	42839	3/4"-10 Hex Nut
8	42840	3/4" Washer
3	42841	10-24 x 3/4" pan head tamperproof screw
2	42843	6-32 hex nut
1	67478	Polycarbonate light cover
1	68590	LED light board (12-24V AC/DC - 120VAC)
1	ETP-EL-L or ETP-EL12/24	120VAC Strobe Light or 12VDC/24VAC/24VDC Strobe Light

III. Installation

1. Electrical and telephone line conduits should be run through the foundation and into the center 4" diameter hole of the tower.

NOTE: To insure proper grounding of all electrical components, the tower mount should be effectively earth grounded from the grounding stud (located in the electrical box across from the lower access panel) with 6 AWG or better insulated, stranded copper wire to the metallic power service raceway (conduit) or an 8 foot or longer corrosion-resistant ground spike. All 120V connections should also be made inside this electrical box. It is the installer's obligation to ensure compliance with all national, regional, and local regulations.

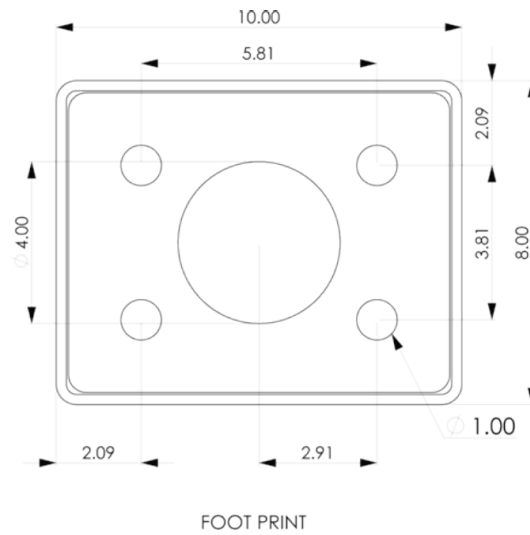
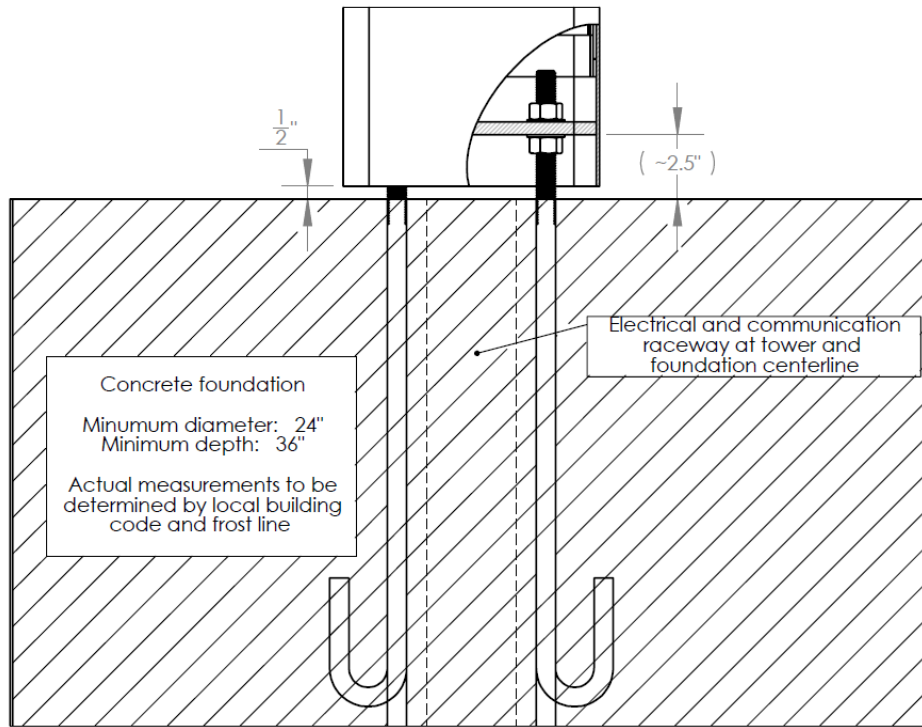
2. Pour the foundation at least 2 feet in diameter and 3 feet deep according to your local code and frost line (see foundation drawing on following page).
3. Install the four (4) 3/4" - 10 x 24 long anchor bolts below grade **with five inches (5") projecting above grade** (see foundation drawing on following page). Use the template provided to properly position the bolts within the concrete foundation.

NOTE: Make sure all connections meet National, Regional, and Local Electric Codes.

Copyright 2009 Talk-A-Phone Co. All rights reserved.

ETP-MT Anchor Bolt Installation Instructions

IV. ETP-MT Foundation Drawing



Installation must comply with all national, state, and local construction and electrical codes.

Copyright 2009 Talk-A-Phone Co. All rights reserved.