



TALKAPHONE

ETP-MTE ECO TOWER™ EMERGENCY PHONE TOWER

THE ECO TOWER™ EMERGENCY PHONE TOWER, MODEL ETP-MTE, COMBINES ECONOMY AND ECOLOGY INTO ONE STYLISH PRODUCT. THE LIGHTWEIGHT ALUMINUM CONSTRUCTION REDUCES ITS ECOLOGICAL FOOTPRINT AND ALLOWS FOR ONE-PERSON INSTALLATION

FEATURES

- Light weight aluminum construction for reduced ecological footprint and one-person installation
- Durable, multilayer powder coating achieves near-zero waste and VOC (volatile organic compound) emissions
- Modular construction allows for easy upgrades
- Optimal internal mounting plates and shelves provide clean mounting solutions for accessories
- Emergency Phone is illuminated at all times by an LED Panel Light
- Vandal-resistant and designed to resist extreme weather conditions
- A variety of signage, graphics and color choices are available
- Easily mount any Talk-A-Phone ETP-400 Series or VOIP-500 Series Emergency/Information Phone into the unit (sold separately)
- ADA-compliant



**ETP-MTE - ECO TOWER™
Emergency Phone Tower**



**ETP-MTE-W - Wireless/
Switched Power ECO TOWER™
Emergency Phone Tower**



**ETP-MTE-WP - Wireless ECO
TOWER™ Emergency Phone
Tower with Pole**



Construction:	0.125 in. aluminum	0.125 in. aluminum	0.125 in. aluminum
Dimensions (WxDxH):	10.0 x 6.8 x 113.0 in. (254 x 171 x 2870 mm)	10.0 x 6.8 x 124.0 in. (254 x 171 x 3150 mm)	10.0 x 6.8 x 148.0 in. (254 x 171 x 3759 mm) including pole and Blue Light
Weight:	45 lbs. (20.4 kg)	50 lbs. (22.7 kg)	60 lbs. (27.2 kg)
Coating:	High-gloss, multi-layer, corrosion-inhibitive system with resistance to UV-fade and graffiti protection	High-gloss, multi-layer, corrosion-inhibitive system with resistance to UV-fade and graffiti protection	High-gloss, multi-layer, corrosion-inhibitive system with resistance to UV-fade and graffiti protection
Colors:	Blue and Red are standard. Available in custom colors.	Blue and Red are standard. Available in custom colors.	Blue and Red are standard. Available in custom colors.
Signage:	3.25 in. high reflective white "EMERGENCY" lettering with wide-angle visibility is standard. Available in custom colors, lettering, and graphics.	3.25 in. high reflective white "EMERGENCY" lettering with wide-angle visibility is standard. Available in custom colors, lettering, and graphics.	3.25 in. high reflective white "EMERGENCY" lettering with wide-angle visibility is standard. Available in custom colors, lettering, and graphics.
Lighting:	LED Blue Light: 209 lumens peak, 78 flashes per minute. 50,000 hour lifetime LED Panel Light: Ultra bright LEDs, 50,000 hour lifetime	LED Blue Light: 209 lumens peak, 78 flashes per minute. 50,000 hour lifetime LED Panel Light: Ultra bright LEDs, 50,000 hour lifetime	LED Blue Light: 209 lumens peak, 78 flashes per minute. 50,000 hour lifetime LED Panel Light: Ultra bright LEDs, 50,000 hour lifetime
Power:	9 watts, 12-24VDC, 24/120VAC	9 watts, 12-24VDC, 24/120VAC	9 watts, 12-24VDC, 24/120VAC
Mounting:	Mounts into concrete foundation using included hardware (shipped in advance). Mounting options available for pre-poured parking decks.	Mounts into concrete foundation using included hardware (shipped in advance). Mounting options available for pre-poured parking decks.	Mounts into concrete foundation using included hardware (shipped in advance). Mounting options available for pre-poured parking decks.
Warranty:	2-year warranty	2-year warranty	2-year warranty

ETP-MTE-ARM - ECO TOWER™
Camera Arm



ETP-MTE-72 - ECO TOWER™
Emergency Phone Tower



Construction:	0.125 in. aluminum	0.125 in. aluminum
Dimensions (WxDxH):	10.0 x 13.5 x 43.4 in. (254 x 344 x 1101 mm) not including LED Blue Light	10.0 x 6.8 x 72.0 in. (254 x 171 x 1829 mm)
Weight:	18 lbs. (8.2 kg) - Arm	30 lbs. (13.6 kg)
Coating:	High-gloss, multi-layer, corrosion-inhibitive system with resistance to UV-fade and graffiti protection	High-gloss, multi-layer, - corrosion-inhibitive system with resistance to UV-fade and graffiti protection
Colors:	Blue and Red are standard. Available in custom colors.	Blue and Red are standard. Available in custom colors.
Signage:	N/A	3.25 in. high reflective white "EMERGENCY" lettering with wide-angle visibility is standard. Available in custom colors, lettering, and graphics.
Lighting:	N/A	LED Blue Light: 209 lumens peak, 78 flashes per minute. 50,000 hour lifetime LED Panel Light: Ultra bright LEDs, 50,000 hour lifetime
Power:	N/A	9 watts, 12-24VDC, 24/120VAC
Mounting:	Camera mount has a 1.5" NPT adapter to mount a dome camera. Camera mount can be installed on any basic ECO TOWER emergency phone tower.	Mounts into concrete foundation using included hardware (shipped in advance). Mounting options available for pre-poured parking decks.

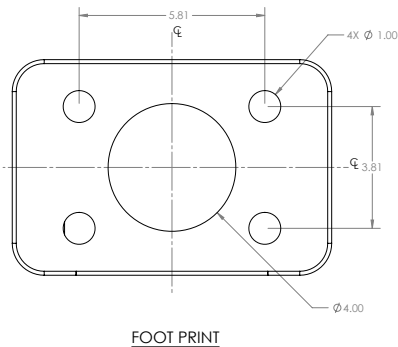
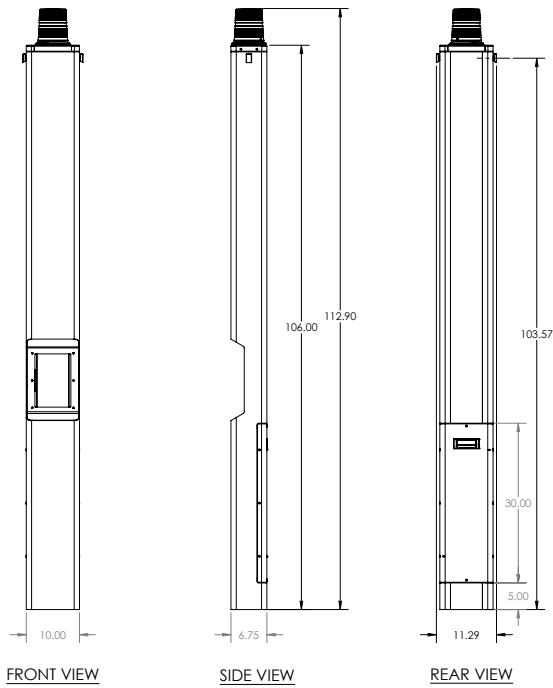
Approvals:

ETL Recognized Component -- Conforms to UL Standards 60950-1 and 60950-22. Certified to CSA Standard C22.2 Nos. 60950-1 and 60950-22.



DIMENSIONAL DRAWING

All dimensions are in inches and are provided for reference only.



TALKAPHONE

THE LEADERS IN SECURITY AND LIFE SAFETY COMMUNICATIONS

7530 North Natchez Avenue
Niles, Illinois 60714

Tel: 773-539-1100
Email: info@talkaphone.com
Web: www.talkaphone.com

ACCESSORIES

Parking Deck Mounting Kit: Order model ETP-PDMK to mount on pre-poured parking deck.

Shelving: Order model ETP-MTE-SHELF to add an internal mounting shelf for accessories. Maximum two shelves per tower.

Mounting Panel: Order model ETP-MTE-PANEL to add an internal mounting panel for accessories. Maximum two panels per tower.

Emergency Phones

VoIP

Single Button Emergency Phone



VOIP-500



VOIP-600

Single Button Assistance Phone



VOIP-500C



VOIP-600H

Dual Button Emergency Phone



VOIP-500D



VOIP-600IE

Keypad Emergency Phone



VOIP-500K



VOIP-600ECK