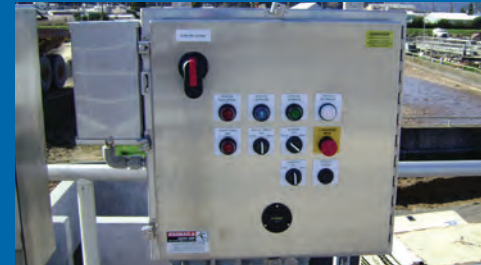
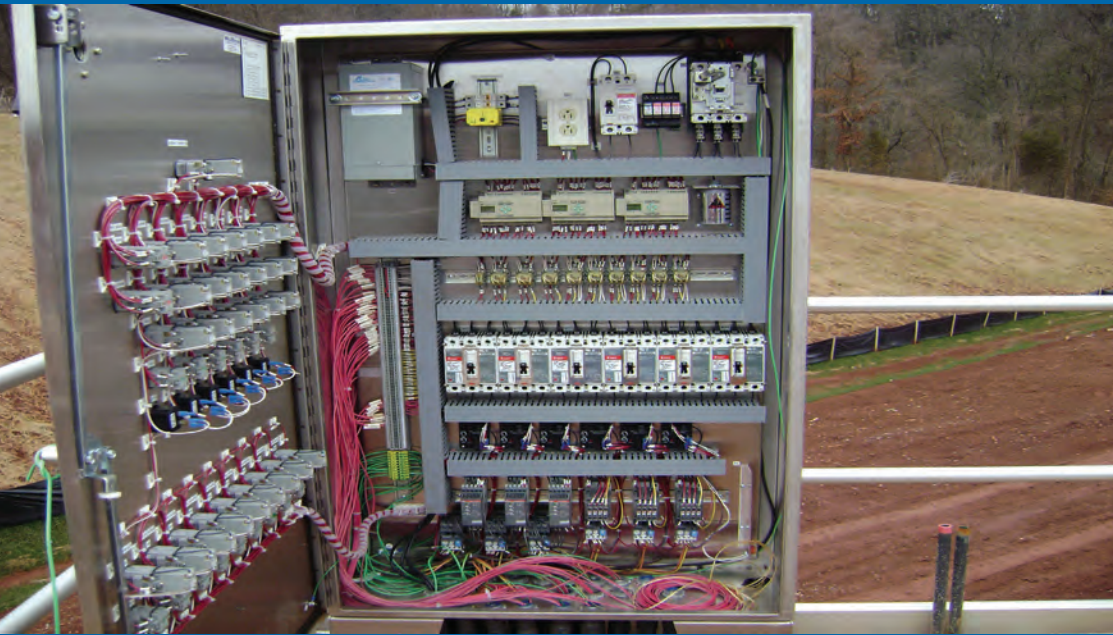
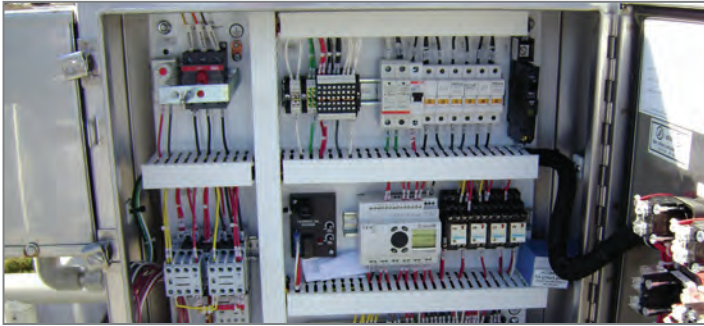


Industrial Controls and Service



WESTECH[®]

Industrial Controls and Service



WesTech operates a full-service electrical controls shop that builds custom machine control centers for WesTech process equipment and for other controls applications. From simple control boxes to large control centers utilizing the latest in programmable logic, interactive touch screens and broadly versatile VFD systems, WesTech builds them all under the quality guidelines mandated by ISO 9001 certification.

Why Choose WesTech?

In today's automated business environment, consistent performance of your equipment is foremost to your success. We understand that you cannot afford to take a risk without assurances — WesTech's Industrial Controls Division provides that assurance with the confidence of a manufacturer who stands behind every piece of equipment they produce.

WesTech brings a quality reputation and years of experience to your project. As a full-line manufacturer of process equipment for 40 years, we realize that when you turn to us to solve your industrial control needs, our commitment to you isn't just the sale of a quality product. We make a commitment of our reputation, and a continued effort to maintain your trust, guaranteeing the proper equipment is designed, installed, and serviced to meet your needs.

Custom Design

Understanding your industrial control challenges begins with an in-house engineering and design team. WesTech custom designs each project according to ISO 9001 documented quality procedures and UL standards. Using customer specifications, standard design methods, and computer software for sizing and calculations, WesTech takes every measure to assure consistent quality in design and fabrication.

WesTech's production facility assembles each unit in accordance with documented quality policies. Final shop inspection includes functional testing of all control panels, guaranteeing continued field operation. The craftsmanship of each of our control panels allows us to provide a warranty that inspires confidence, backed by the integrity of WesTech. Extended warranty options further demonstrate WesTech's customer service commitment and provide the operational flexibility that you demand in a manufacturer.

Typical Applications

- **Agriculture**
- **Chemical Processing**
- **Coal Processing**
- **Food Processing**
- **Irrigation**
- **Laundry**
- **Manufacturing**
- **Mining Steel**
- **Pulp & Paper**
- **Pump Stations**
- **Refineries**
- **Water & Wastewater Treatment**

Controls and Services

- **AC & DC Variable Speed Drive Systems**
- **Custom Control Panels**
- **Full System Integration**
- **Motor Control Centers**
- **Panels for All Hazardous and Non-hazardous Locations**
- **Process Instrumentation**
- **Program Logic Control Stations**
- **SCADA Systems**

The WesTech Advantage

WesTech can provide system design or build to exacting project specifications. WesTech is recognized by Underwriters Laboratories, UL 698/UL 508, as meeting all requirements for quality manufacturing standards by both regulatory organizations for worldwide manufacture and supply. This integrated approach to system design is beneficial in meeting project deadlines, avoiding troubleshooting at startup, and giving consulting engineers and contractors one less detail to worry about during the project design and build.

For municipal control packages, or highly complex industrial control centers for explosion proof and hazardous duty, WesTech can provide the needed controls and the assurance of equipment built right. Consider WesTech for your industrial controls and service needs.





WESTECH®

Tel: 801.265.1000
westech-inc.com
info@westech-inc.com
Salt Lake City, Utah, USA

© WesTech Engineering, Inc. 2015