

About The Cube

The Cube is a MCA managed facility located within The Shops at Conservatory Green at 8371 E Northfield Blvd. With easy access to both I-70 and 270, The Cube is designed to serve all sectors of the community through inclusive pricing for Central Park residents, non-profit groups and non-residents.

Guests are welcomed into a 1500 square foot lobby with high ceilings and open floor plan. The 3000 square foot event hall offers endless possibilities for creative exploration. Equipped with state-of-the-art video projection and surround sound, The Cube offers an excellent audio/video experience for guests.

Additional facility amenities include a 40' x 8' semi-permanent stage, deluxe catering-prep space and elegantly designed bathroom facilities.

Our hope is that the design and functionality of the space offers you an opportunity to create a breathtaking experience for your event whether you are hosting a wedding reception, birthday celebration or deluxe game night for family and friends.



For rental requests please visit:
www.mca80238.com/facilities/the-cube
For questions please email:
cube@mca80238.com

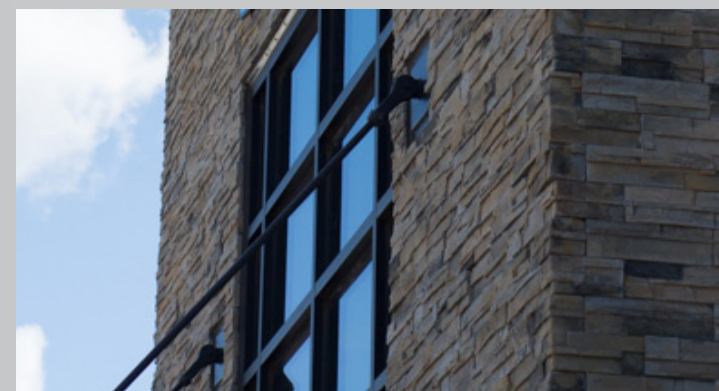


The Cube
Live • Learn • Create
Master Community Association

8371 E. Northfield Blvd
Denver, CO 80238
303-388-0724
www.mca80238.com



The Cube
Live • Learn • Create
Master Community Association





Pricing & Amenities

- 40' x 8' Semi-Permanent Stage
- Catering Kitchen
- Audio/Video Equipment
- Use of On-Site Tables
- Banquet Chairs
- On-Site Staff Representative
- Available Ice Machine



	January-October Monday-Thursday (8am-8pm) 2 Hour Minimum	November-December Monday-Thursday (8am-8pm) 3 Hour Minimum	Weekend Mornings: Friday-Sunday (8am-2pm)	Weekend Evenings: Friday-Sunday (4pm-11pm)
Resident Rate	\$175/Hr	\$175/Hr	\$1200	\$1500
Non-Resident Rate	\$225/Hr	\$225/Hr	\$1500	\$2000

Deposit \$500

