









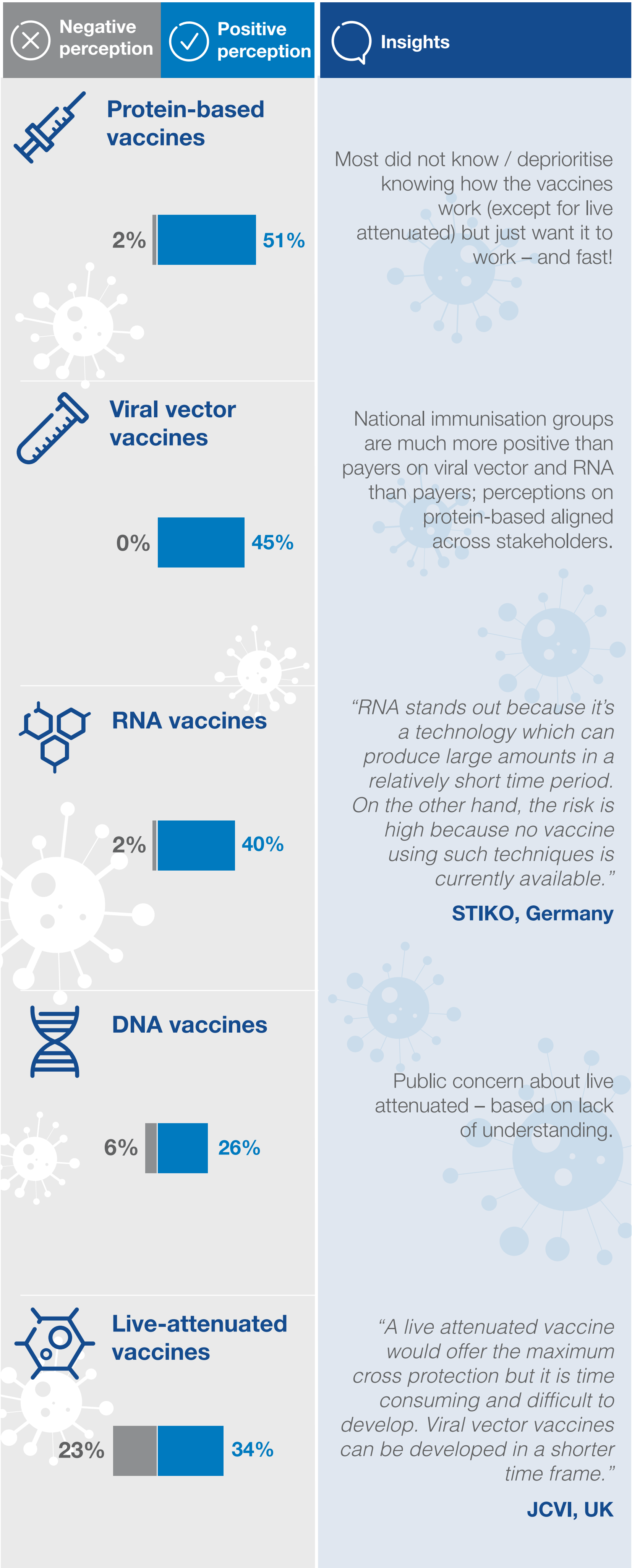
Perceptions of SARS-CoV-2 vaccine approaches

In May 2020, we conducted a syndicated study to assess the impact of COVID-19 on biopharmaceutical market access with payers and advisors in the US, Europe, Brazil, and China. Our questions covered vaccines and therapies, both COVID-19 specific and others

Sample									Total
Payers / advisors	35	6	6	6	6	6	6	6	77

Here is a snapshot of payers' and experts' perceptions of COVID-19 vaccine approaches

Protein based and viral vector vaccines generate most excitement among payers and experts while live attenuated are polarising due to lack of understanding of their risk and long development timelines



Data based on interim sample of n=67



If this study is potentially of interest to your company and you would like to receive a more detailed overview of the results, including individual insights by market, please contact us:

info@researchpartnership.com | researchpartnership.com