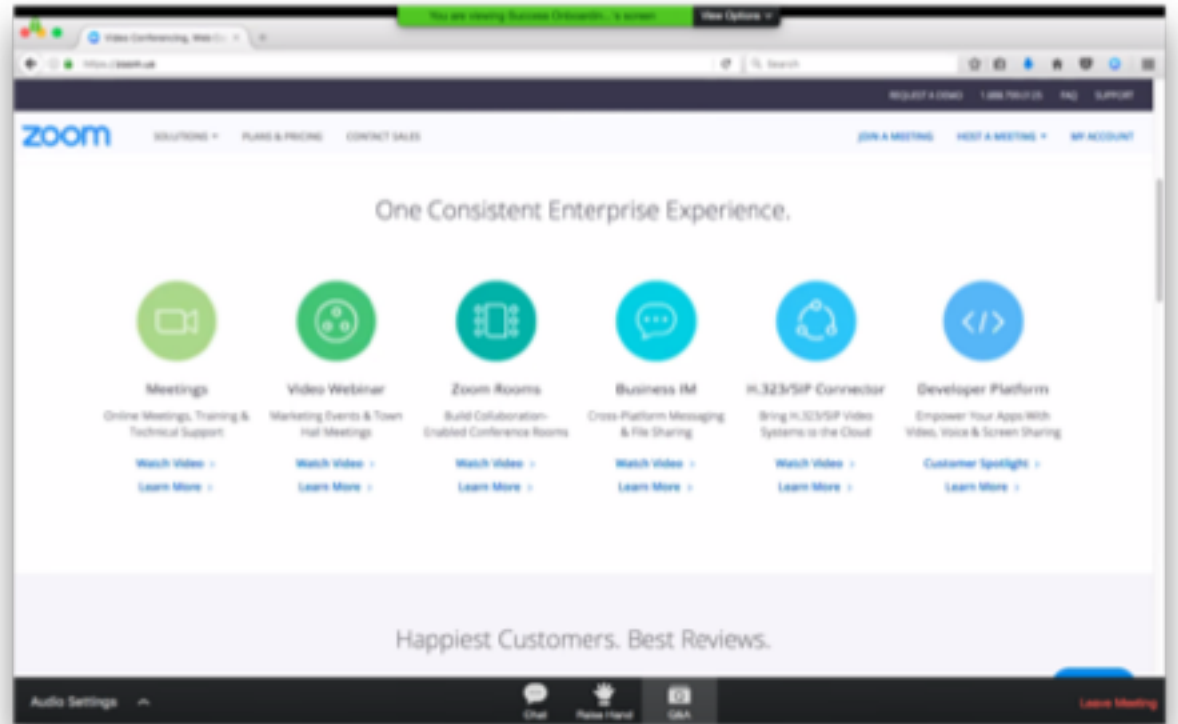


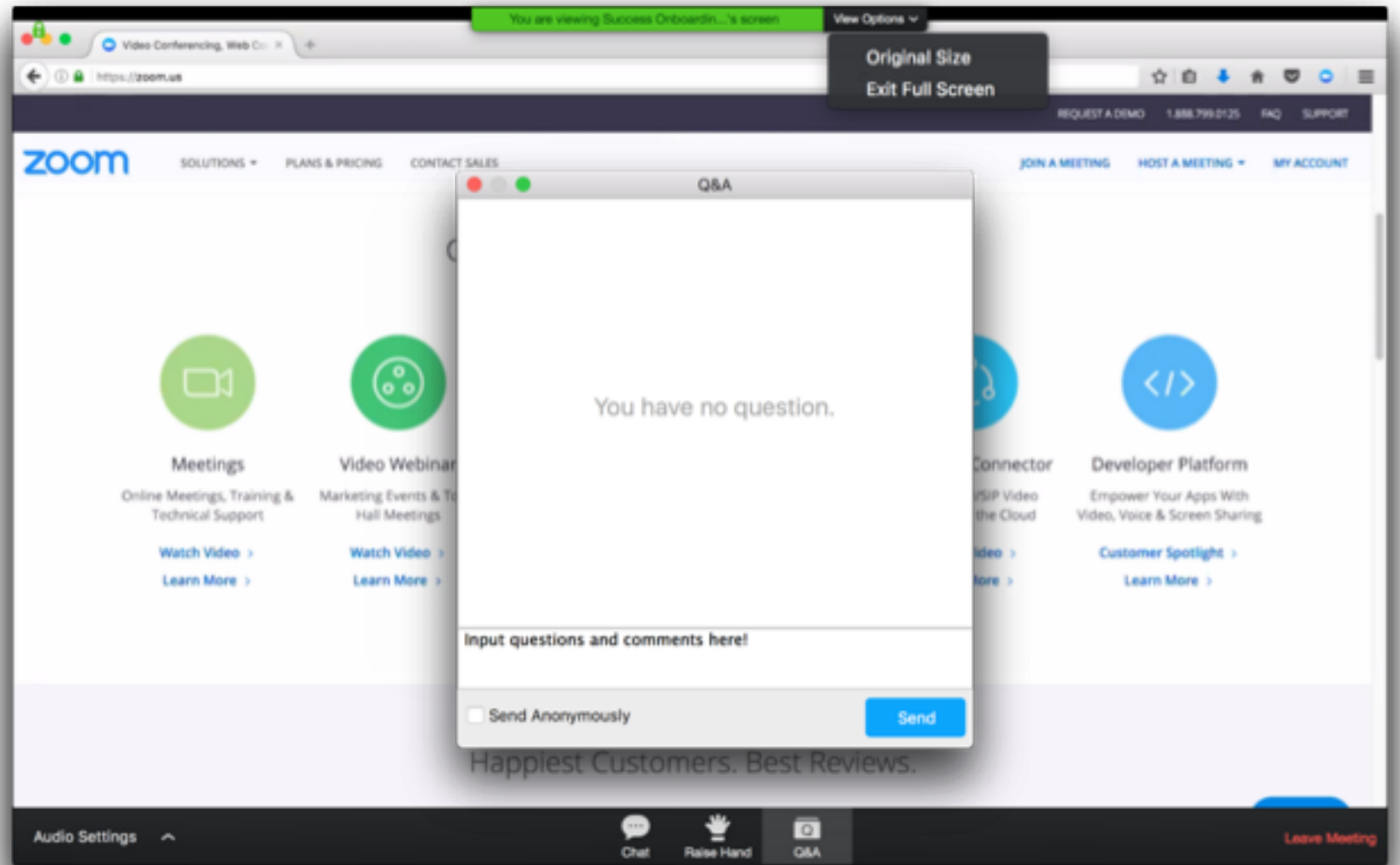
# Welcome!

While we wait for everyone to get started...

- Use the chat box to tell us about yourself
  - Name
  - Role
  - ISD/Institution/Organization




# Participation and Interaction



The background of the slide is a photograph of a long, straight asphalt road with yellow dashed lines, receding into the distance under a clear sky. In the lower-left foreground, the 'TEXAS ONCOURSE' logo is displayed in large, white, bold letters. The logo consists of a white location pin icon with a compass needle pointing towards the top-right, followed by the words 'TEXAS' and 'ONCOURSE' stacked vertically. To the right of the logo, a laptop is shown, displaying the Texas OnCourse website. The website's header includes the logo and navigation links. Below the header is a banner with a photo of three people and the text 'Have a plan for what's next.' Underneath the banner is a section titled 'Featured Tools by Texas OnCourse' which contains four tool cards: 'MIDWINTER', 'MAP MY GRAD', 'Texas OnCourse Academy', and 'Share Your Road'.

# TEXAS ONCOURSE

**Adjusting to College Planning Under  
COVID-19**



With Texas OnCourse, all Texas students, no matter where they come from or where they're headed, have a plan for success after high school.



# TEXAS ONCOURSE



**Don't Forget to Like and Subscribe  
on YouTube!**



Texas OnCourse  
182 subscribers

[youtube.com/c/TexasOnCourse](https://youtube.com/c/TexasOnCourse)





# Agenda

## Adjusting to College Planning Under COVID-19

- Welcome
- THECB College Enrollment Updates and Trends
  - Dakota Doman, Senior Director for Strategic Initiatives and Policy Implementation
- Texas OnCourse Resource Spotlight
  - Samantha Gonzalez, Content and Resources
- District Perspectives and Student Engagement
  - Kaitlyn Watson, College and Career Coordinator, Jarrell ISD
- Questions and Discussion

# Lara Gueguen

Assistant Director of Program Implementation  
Texas OnCourse





# Dakota Doman

Senior Director, Strategic Initiatives and Policy Implementation  
Texas Higher Education Coordinating Board





# Samantha Gonzalez

Program Manager, Content and Resources  
Texas OnCourse



# Allison Rizzolo

Associate Director, Marketing and Communications  
Texas OnCourse



# Kaitlyn Watson

College and Career Coordinator, Jarrell ISD  
Texas OnCourse Leader Fellow



# **What are some college planning questions you'd like us to cover in this webinar?**

**Please type your responses in the chat box.**





## Adjusting to College Planning During COVID-19

September 8, 2020



## Texas Higher Education Coordinating Board

**Dr. Dakota J. Doman**  
**Senior Director for Strategy and Policy**

[Dakota.Doman@highered.texas.gov](mailto:Dakota.Doman@highered.texas.gov)

# Presentation Objectives:

- Discuss Fall 2019 Enrollment Trends at Two-Year and Four-Year institutions.
- Understand Various Financial Aid Packages.
- Recognize Cost of Attendance Factors.
- Comprehend New Testing Requirements.
- Provide Resources to Support Counselors.



# Enrollment Trends at Two-Year and Four-Year institutions

## ➤ Two Year Environment:

- Many community colleges are reporting a decrease in their Fall 2020 enrollment.
- Decrease is due to lower CTC courses and Dual Enrollment from partnerships with local area secondary institution.



# Enrollment Trends at Two-Year and Four-Year institutions

- Four-Year Environment:
  - Many Four-Year institutions are experiencing flat enrollment or a slight increase.
  - First Time in College (FTIC) population is usually up.
  - Transfer student population and returning student population is down.





## Texas Application for State Financial Aid (TASFA)

- Toward Excellence, Access and Success (TEXAS) Grant
  - Funds are available to eligible students attending General Academic Teaching Institutions.
- TEXAS Educational Opportunity Grant (TEOG)
  - Funds are available to eligible students attending community colleges and public state colleges and technical institutes.
- Tuition Equalization Grant (TEG)
  - Funds available to eligible students attending private or independent colleges.



## What Makes a Student Eligible for TEXAS Grant?

➤ Eligible Student:

- Be a resident of Texas.
- Exhibit financial need.
- Be a graduate of an accredited high school in Texas after 1998-1999 school year.
- Not have been granted a baccalaureate degree.
- Enroll in undergraduate degree or certificate program on at **least three-quarter** time basis.



## What Makes a Student Eligible for the TEOG?

➤ Eligible Student:

- Be a resident of Texas.
- Exhibit financial need.
- Not have been granted a baccalaureate degree.
- Enroll in an associate degree or certificate program on at **least half-time** basis.



## What Makes a Student Eligible for the TEG Program?

➤ Eligible Student:

- Be a resident of Texas.
- Exhibit financial need.
- Maintain Satisfactory Academic Progress in program of study
- Enroll in an associate degree or certificate program on at **least three-quarter** basis.
- Not be recipient of any form of athletic scholarship during the semester (s)he receives a TEG.



## Work-Study and Scholarships

- Texas College-Work Study (TCWS)
  - TCWS program funds are available to eligible students attending public and private/independent institutions of higher education.
- Work-Study Student Mentorship Program
  - Purpose of the mentorship program is to provide employment to eligible students to mentor, tutor, or advise students at participating institutions of higher education or high school students within local school districts and non profit organizations.





## Cost of Attendance Factors

- Cost of Attendance: Estimated annual cost to attend a particular college. Includes: Tuition, Room & Board, Supplies, Transportation, and other miscellaneous items.
- Distance Learning Fees: Sticker Shock
  - Some institutions have increased their Fall 2020 online course offerings by more than 25%.
  - Tuition has increased by 2.5% at some institutions.



## Open Educational Resources

- In August 2020, THECB launched OERTX, a digital repository of open educational resources for Texas students and educational institutions.
- All OERTX resources are free and available to any user.
- Resources include: e-textbooks for Texas Core Curriculum courses.



# Testing Requirements

- COVID-19 has disrupted regular SAT & ACT Testing.
- Many Texas institutions are becoming “test optional”.
- Some institutions are considering permanently waiving ACT & SAT testing requirements.
- Implications of new testing requirements environment.



# Counselor Support

- Professional Development Opportunities
- Collaboration and Partnerships
- ADVi



# Virtual Advising Project: Meet ADVi

- **THECB developed the virtual advising project – a chatbot named “ADVi” (short for adviser) – to reach students via text message.** Trained advisers back up the chatbot and provide extra support for any student who needs it.
- **While nothing replaces the relationships you have with your students,** ADVi can help expand your capacity and add another layer of support for students.
- **What students receive when they opt in to support from ADVi:**
  - The ability to ask questions about college 24/7 via text,
  - Backup support from our Virtual Advisers if a student has needs or questions beyond what ADVi can provide,
  - Student-friendly, accurate, and engaging messages about key milestones, financial aid, and resources to help navigate the transition to college.

**Students can opt in by texting “COLLEGE” to 512-829-3687  
or by starting their freshman ApplyTexas application.**



# 60×30TX



Texas Higher Education  
Coordinating Board

**Thank you!**

# **Texas OnCourse Academy Resources Spotlight**

**College Planning Resources**

- All Tools
- Texas OnCourse Academy
- MapMyGrad
- MiddleGalaxy
- Share Your Road
- Roadtrip Texas
- Middle School Curriculum Guide
- Middle School Family Guide
- Monthly Webinar Series
- Office Hours Twitter Chat

## Your source for college and career preparation

Have a plan for what's next.

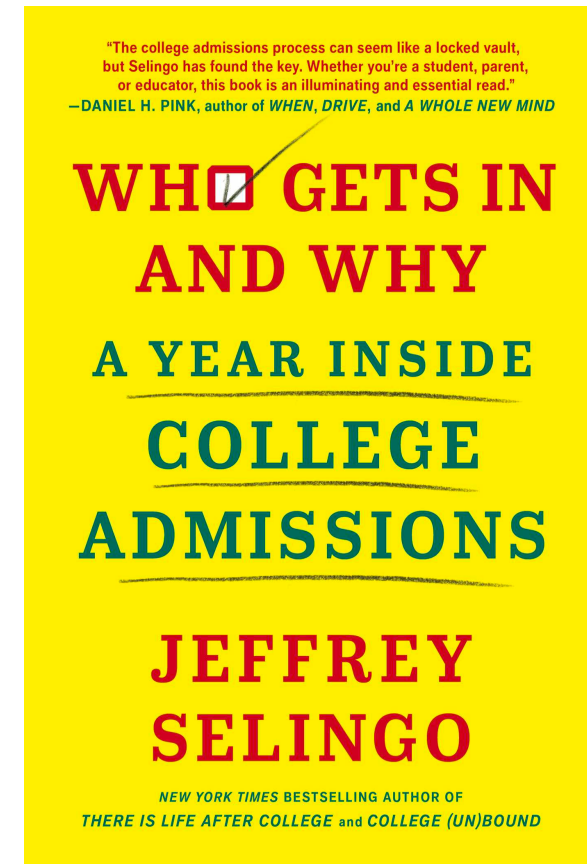
Explore our middle school resources



# Tips from PrepMatters Town Hall

## Who Gets In and Why: A Year Inside College Admissions by Jeff Selingo

- Focus on grades and curriculum
- Explore testing options
- Make your application tell a complete story
- Create a diverse college list
- Make your essay stand out







# Tuition Guarantee Programs

- Free tuition programs across Texas
- Eligibility requirements
- College Finances > Unit 1 > Quick Guide to College Costs

# Tuition Guarantee Programs

Explore the table below to learn more about the free tuition programs at colleges and universities throughout Texas. Click on each institution for additional eligibility requirements.

| College   | Criteria for FDEE tuition  | Admission Requirements |   |            | Deadline  |
|---|--|------------------------|---|------------|---|
| <b>Angelo State University</b><br><b>(Blue and Gold Guarantee)</b><br> | Covers tuition and fees for first-time incoming freshmen who are Texas residents with family incomes of up to \$50,000.  | <b>Rank</b>            | <b>SAT</b>                                | <b>ACT</b> | Financial aid paperwork submitted and accepted by <b>May 1</b>      |
|   |  | Top 10%                | No minimum scores that need to be on file |            |   |
|   |  | Next 40%               | 920                                       | 19         |   |
|   |  | All others             | No review                                 |            |   |
| <b>Lamar University</b><br><b>(Lamar Promise)</b><br>                  | Covers tuition and fees for students with family incomes of up to \$25,000.  | <b>Rank</b>            | <b>SAT</b>                                | <b>ACT</b> | Financial aid paperwork submitted and accepted by <b>January 15</b> |
|   |  | Top 25%                | No minimum scores that need to be on file |            |   |
|   |  | Second quartile        | 1040                                      | 23         |   |
|   |  | Third quartile         | 1080                                      | 21         |   |
|   |  | Fourth quartile        | 1080                                      | 21         |   |
| <b>Midwestern State University</b><br><b>(Mustang Guarantee)</b><br>   | Covers tuition and fees for first-time incoming freshmen who are Texas residents with family incomes of up to \$45,000.  | <b>Rank</b>            | <b>SAT</b>                                | <b>ACT</b> | Financial aid paperwork submitted and accepted by <b>May 31</b>     |
|   |  | Top 25%                | No minimum scores that need to be on file |            |   |
|   |  | Second quartile        | 1070                                      | 21         |   |
|   |  | Third quartile         | 1140                                      | 23         |   |
|   |  | Fourth quartile        | 1080                                      | 24         |   |
| <b>Rice University</b><br><b>(The Rice Investment)</b><br>            | Covers tuition, fees, and room and board for undergraduate students who are Texas residents with family incomes of up to \$45,000. Covers full tuition for undergraduate students who are Texas residents with family incomes of up to \$105,000. Covers half tuition for undergraduate students who are Texas residents with family incomes of up to \$205,000. | <b>Rank</b>            | <b>SAT</b>                                | <b>ACT</b> | Financial aid paperwork submitted and accepted by <b>January 15</b> |
|   |  | Top 10%                | No minimum scores that need to be on file |            |   |
|   |  | All others             | No review                                 |            |   |
| <b>Sam Houston State University</b><br><b>(Bearkat Promise)</b><br>  | Covers tuition and fees for entering freshmen and transfer students with family incomes of up to \$40,000.   | <b>Rank</b>            | <b>SAT</b>                                | <b>ACT</b> | Financial aid paperwork submitted and accepted by <b>January 15</b> |
|   |  | Top 10%                | No minimum scores that need to be on file |            |   |
|   |  | 3.4-4.0 GPA            | 900                                       | 20         |   |
|   |  | 3.0-3.40 GPA           | 1010                                      | 21         |   |
|   |  | 2.5-2.99 GPA           | 1110                                      | 20         |   |
|   |  | 2.25-2.49 GPA          | 1210                                      | 20         |   |

TEXAS ONCOURSE | 11

| Option   | Admission Requirements          |  |            | Deadline  |
|--|---------------------------------|--|------------|---|
| Up to 4<br>10<br>hours of<br>state and<br>self and   | <b>Rank</b>                     | <b>SAT</b>   | <b>ACT</b> | Financial aid<br>submitted by<br><b>January 15</b><br><br>Complete any<br>additional financial<br>aid package<br>requirements by<br><b>June 1</b> |
|  | Top 10%                         | No minimum scores<br><i>(You need to be on file)</i> |            |   |
|  | First quartile (not<br>top 10%) | 980  | 17         |   |
|  | Second quartile                 | 1030   | 20         |   |
|  | Third quartile                  | 1070   | 24         |   |
|  | Fourth quartile                 | File review  |            |   |
| 8 need<br>and on<br>th                               | <b>Rank</b>                     | <b>SAT</b>   | <b>ACT</b> | Financial aid<br>paperwork submitted<br>and accepted by<br><b>January 15</b>  |
|  | Top 25%                         | No minimum scores<br><i>(You need to be on file)</i> |            |   |
|  | Second quartile                 | 880  | 16         |   |
|  | Third quartile                  | File review  |            |   |
| 100 of   | <b>Rank</b>                     | <b>SAT</b>   | <b>ACT</b> | Financial aid<br>paperwork submitted<br>and accepted by<br><b>January 15</b>  |
|  | Top 10%                         | No minimum scores<br><i>(You need to be on file)</i> |            |   |
|  | Top 10%                         | 1360   | 27         |   |
|  | All others                      | File review  |            |   |
| 100 who<br>study<br>about<br>four<br>hours<br>per at | <b>Rank</b>                     | <b>SAT</b>   | <b>ACT</b> | Financial aid<br>paperwork submitted<br>and accepted by<br><b>January 15</b>  |
|  | Top 25%                         | No minimum scores<br><i>(You need to be on file)</i> |            |   |
|  | Second quartile                 | 1080   | 21         |   |
|  | Third quartile                  | 1170   | 23         |   |
|  | Fourth quartile                 | 1270   | 27         |   |
|  | All others                      | File review  |            |   |
| 100 of<br>state 15<br>spring                         | <b>Rank</b>                     | <b>SAT</b>   | <b>ACT</b> | Financial aid<br>paperwork submitted<br>and accepted by<br><b>January 15</b>  |
|  | Top 40%                         | No minimum scores<br><i>(You need to be on file)</i> |            |   |
|  | Next 60%                        | 900+   | 19+        |   |
| 100 of<br>state 15<br>spring                         | <b>Rank</b>                     | <b>SAT</b>   | <b>ACT</b> | Financial aid<br>paperwork submitted<br>and accepted by<br><b>January 15</b>  |
|  | Top 10%                         | No minimum scores<br><i>(You need to be on file)</i> |            |   |
|  | First quartile (not<br>top 10%) | 1000   | 20         |   |
|  | Second quartile                 | 1090   | 22         |   |
|  | Third quartile                  | 1220   | 26         |   |
|  | Fourth quartile                 | 1330   | 29         |   |

 | 2



# Financial Aid: Federal Policy Update

## Completing Verification

Acceptable documentation:

- A signed statement
- Copy of IRS Form W-2 (or paystub, an employment offer letter, evidence of direct deposit from an employer)



**Note: Always contact the financial aid office for more information and instructions regarding special circumstances and process updates.**

# Locating a Resource in the Academy

The screenshot displays the TexasOnCourse Academy dashboard for user Samantha Gonzalez. The interface includes a top navigation bar with a search bar and tabs for Academy, MiddleGalaxy, and DataDive. A left sidebar contains links to Dashboard, Explore Modules, and Module Directory. The main content area is divided into several sections: 'LAST UNIT VISITED' showing '01 FAFSA Preparation' with a 'CONTINUE' button; 'NEW CONTENT' listing 'ApplyTexas', 'SAT', and 'Texas Success Initiative Assessment (TSIA)' with 'Explore Module' buttons; and 'MY PROGRESS' which lists 'Financial Aid', 'Postsecondary Pathways', 'Specialties', and 'Career Pathways'. The 'Financial Aid' item is highlighted with a red rectangular box. To the right of these items are three circular icons representing 'TRANSITION ADVISING', 'ADVISING HIGHLY MOBILE POPULATIONS', and 'MIDDLE SCHOOL COLLEGE AND CAREER'. A 'VIEW MY BADGES AND CERTIFICATES' button is located at the bottom right of the dashboard.

TEXASONCOURSE

Search

Samantha Gonzalez

Academy MiddleGalaxy DataDive

Dashboard

Explore Modules

Module Directory

LAST UNIT VISITED

FAFSA

01 FAFSA Preparation  
UNIT

CONTINUE

NEW CONTENT

ApplyTexas  
Added July 13 at 2:00 am

Explore Module

SAT  
Added July 13 at 2:00 am

Explore Module

Texas Success Initiative Assessment (TSIA)  
Added July 13 at 2:00 am

Explore Module

MY PROGRESS

Financial Aid

Postsecondary Pathways

Specialties

Career Pathways

TRANSITION ADVISING

ADVISING HIGHLY MOBILE POPULATIONS

MIDDLE SCHOOL COLLEGE AND CAREER

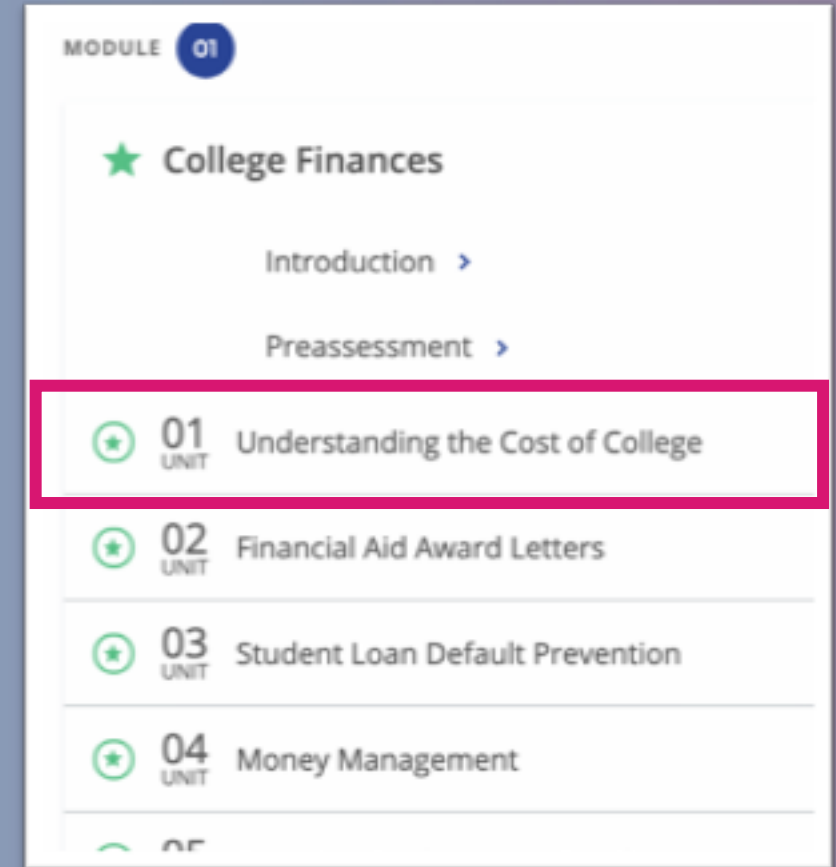
VIEW MY BADGES AND CERTIFICATES

Where are my badges?  
Support & Feedback  
Web Accessibility  
Glossary

# Locating a Resource in the Academy



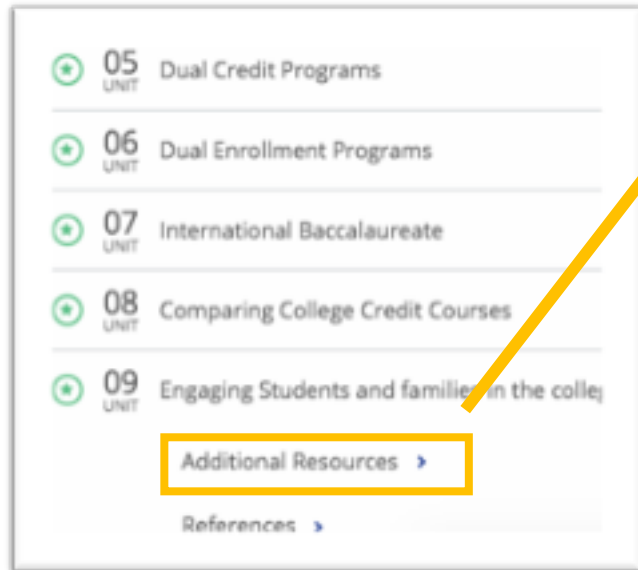
1. Click the “College Costs” badge



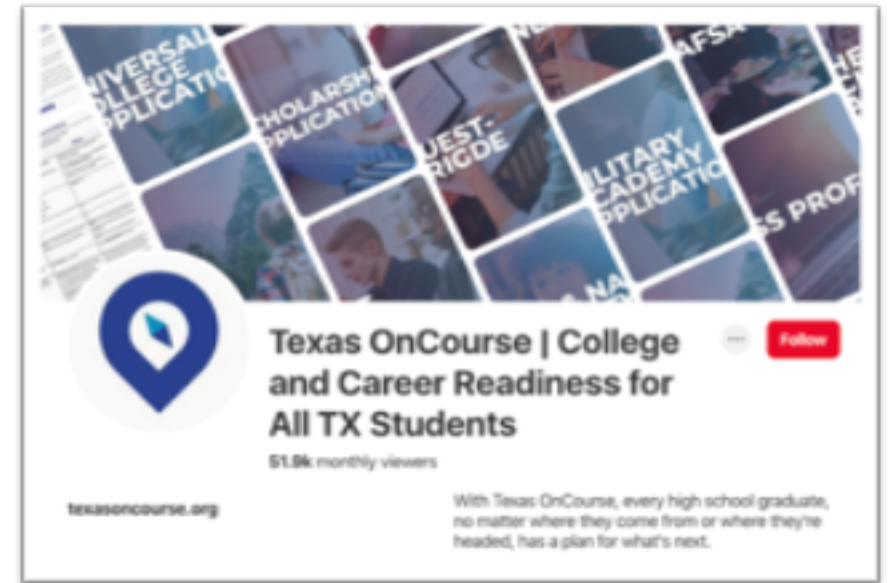
2. Click “Unit 1”

# Texas OnCourse Academy Modules

## Additional Resources



[Pinterest.com/TexasOnCourse](https://www.pinterest.com/TexasOnCourse)



A group of students are sitting on bleachers, looking at laptops and smartphones. The image has a blue and purple color overlay.

# Program Updates

Allison Rizzolo, Texas OnCourse



# New Resources to Support College Enrollment

Despite COVID-19

- **College and Career Support from Texas College Bridge:** New advising guide for educators supporting students enrolled in the Texas College Bridge program. Free for all Texas educators, helps students attain college readiness.
- **Future Focused TX:** Campaign supporting Texas counselors and high school students with free digital resources. It targets college persistence and matriculation for the class of 2020. It also aims to reduce COVID's impact on FAFSA completion and college admission for the class of 2021.

# College and Career Support Advising Guide

## Texas OnCourse College and Career Support Guide

We recognize that a number of your students may be participating in the Texas College Bridge Program, so we've developed this High School Academy Guide to aid your advising efforts. We recommend you explore the modules listed to fully prepare for questions your students may have. In the table below, we've provided the college and career support topics your students will be learning, relevant [Academy modules](#), and supplemental materials that support your professional development. Supplemental materials include extended learning opportunities through webinars, PDFs related to the topic and module, and blogs with additional resources by title and topic.

| Student Topic(s) and Learning Objective(s)  |   |
|---|---|
| <b>College Readiness</b> <ul style="list-style-type: none"><li>Students will be able to explain how to demonstrate college readiness</li><li>Students will be able to explain what college readiness means</li><li>Students will be able to describe how not meeting one of the college readiness standards would impact their college experience</li></ul> | <b>Value of a Postsecondary Degree</b> <ul style="list-style-type: none"><li>Students will be able to explain the value of a postsecondary credential – including its financial, employment, and health advantages</li></ul>  |
| Educator Professional Development to Support Students   |   |
| <b>Advising All Students to Be College Ready (Coming Soon)</b> <p>Learn exactly what college readiness means in Texas and why it's so important for students, their families, and your school district. You'll also learn how developmental education works, ways to demonstrate college readiness (including the TSI Assessment), and</p>                  | <b>TSIA</b> <p>Discover which students need to take the TSIA, what subject areas are included, and how to assist students and families with the TSIA registration process. We'll also explore how to identify TSIA dual credit requirements and what information should be shared with students and families about the TSIA</p> |



[texasoncourse.org/tools/college-and-career-support-from-texas-college-bridge/](https://texasoncourse.org/tools/college-and-career-support-from-texas-college-bridge/)

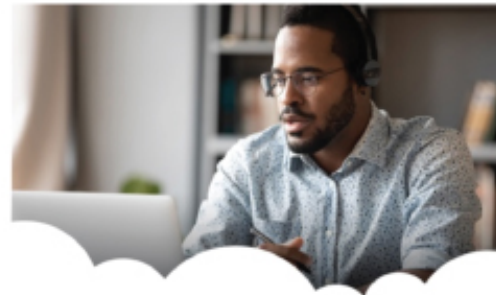
# Texas College Bridge



HOME STUDENT **TEACHER** DISTRICT HIGHER ED

## Help students prepare for college

Free and fully online, Texas College Bridge is a personalized, adaptive learning platform that helps prepare high school seniors for college. The easy to use platform guides students through individualized college preparation courses in math and English, at their own pace and with a teacher facilitator to help them meet their goals.



### Teacher facilitator

Texas College Bridge includes customized teacher training and a data-rich dashboard that allows teachers to monitor a student's progress on each skill. Identify areas that need intervention and provide the support students need. Texas College Bridge gives you access to guide students to success, improve retention, and lay a solid foundation for college completion.

### Advisor facilitator

Mastering the math and English skills that colleges want is not enough to help students successfully transition. That's where an advisor facilitator is key. Find advising resources and training materials for district and campus staff, so you have access to the information you need to successfully advise students. Coming soon!

# College and Career Support

## Are you ready for your next big step?

College and Career Support from [Texas College Bridge](#), powered by College Forward, will guide you through the college application process and help you enroll in the college or degree program of your choice! We know that this journey can seem overwhelming, but we are here to help.

Here are some quick tips on navigating your college resources.



**Take your time to review the resources in each unit.**

Unit One and Unit Two explore the value of earning a college degree, how you can show colleges that you are ready for college-level work, and why that's important.

These are great resources to revisit if you need a reminder of why you are embarking on your college journey.



**Look out for the Next Steps.**

At the end of each resource, we will give you a preview of what's coming in the next one.



**Keep your Guided Activities handy.**

In Unit Three, you will complete activities to explore your personality type and interests. These activities will help you find your unique career and education path. We will refer back to these as we start exploring colleges, so make sure to save your work.





# Free Support for College Counselors & Advisors

- **Weekly Student Activities**
- **Digital Content Packages**
- **Monthly Webinars**

Learn more at  
**FutureFocusedTX.org**

[texasoncourse.org/tools/future-focused-tx/](https://texasoncourse.org/tools/future-focused-tx/)





# Kaitlyn Watson

College and Career Coordinator, Jarrell ISD

Texas OnCourse Leader Fellow



**“Uncertainty marks today,  
tomorrow, and the foreseeable  
future ... accept what  
you can’t change and try to focus  
on the things that you can.”**

# Best Practices Right Now

- Virtual meetings
- Parent outreach and updates
- Providing updates and opportunities
- Collaboration with others involved, involve teachers and those who are interacting well and often
- Virtual college tours, enrichment opportunities
- Accessible websites with valuable resources
- Checklists: keep everybody informed and on track
- Check-ins

# Collaborative for Academic, Social, and Emotional Learning

[casel.org](https://casel.org)

"AS THE COUNTRY AND THE WORLD ABSORB THE IMPACT OF THE CORONAVIRUS (COVID-19), OUR INTERCONNECTEDNESS HAS NEVER BEEN MORE CLEARLY ON DISPLAY. SEL OFFERS A POWERFUL MEANS TO SUPPORT ONE ANOTHER – CHILDREN AND ADULTS – DURING THIS CHALLENGING TIME. NOW, MORE THAN EVER, WE UNDERSTAND HOW IMPORTANT IT IS TO DEMONSTRATE EMPATHY AND RESILIENCE, BUILD RELATIONSHIPS ACROSS DISTANCE, AND CALL UPON OUR COLLECTIVE RESOLVE TO STRENGTHEN OUR SCHOOLS AND OUR COMMUNITIES."

# Empowering Students

Create opportunities for students to take on responsibilities

If a student feels like they have responsibilities that are working toward a greater achievement/goal, it increases empowerment.

Celebrate successes and student potential wherever possible!

Steps to get to a goal

Make sure instructions are in bite-size pieces. We want our students to see the big picture while focusing on the tasks at hand.

Support them along the way by breaking things down!

Self-efficacy

The belief in one's ability to carry out specific tasks and reach their goals.

# Communication

- Clear, direct, and frequent communication can help reduce anxiety and offer predictability in times of uncertainty.
- Explanation/breakdown of policy and procedural changes supports the adaptability we are all needing right now.
- Model flexibility, adaptability, and understanding. Be approachable and transparent!



# Resilience

Encourage your students to use their past triumphs through trials. Remind them of how far they've come!



# Embracing Supports

- Encouraging families to access support during a time of crisis
- Reframing ways to find strengths and silver linings
- Prioritize connection
- Provide opportunities for consistent, positive communication
- Collaborate with others
- Involve teachers and those who interact well and often

# SUPPORTING SKILLS

Meet students where they are when it comes to COVID-related fears, needs, and concerns (including mindset, physical needs, health, etc.)



Provide SEL curriculum for students on post-secondary anxiety, expectation, coping and life skills (including resume building, financial planning, etc.)



Supporting and encouraging future planning

(interest inventories, application support, academic updates, etc.)



52

# Supporting Skills

## Encourage future planning

- Meet students where they are at during COVID-19 regarding:
  - Fears, needs, concerns, mindset
  - Health, housing, physical needs
- Future planning
  - Interest inventories
  - Application support
  - Academic supports
- Provide SEL curriculum that covers:
  - Postsecondary anxiety
  - Expectations
  - Coping
  - Life skills



An aerial photograph of a dense green forest. A paved road with a yellow center line and white edge lines curves diagonally from the bottom left towards the top right. The text is overlaid on the left side of the image.

# **What other supports do you need in your college planning with students?**

**Please type your responses in the chat box.**



# TEXAS ONCOURSE



**Don't Forget to Like and Subscribe  
on YouTube!**



Texas OnCourse  
182 subscribers

[youtube.com/c/TexasOnCourse](https://youtube.com/c/TexasOnCourse)





An aerial photograph of a dense green forest. A paved road with a yellow center line and white edge lines curves through the lower right portion of the image. The text is overlaid on the forest background.

# Thank You

**Stay tuned for our email follow-up with all of this information.**

**Take care and stay healthy and safe!**