


Grant Program

Impact Report

Grant Utilization through
May 2019 - April 2020



“I am consistently inspired by the many, many associates who give back to their communities through their time, their talent and their hard-earned dollars.”

David T. Sweeney, CEO

RS&H is committed to giving back to the communities in which our associates live and work. Through the Elevate Fund, we support nonprofits that our associates are passionate about and that align with our values as a company. The Elevate Fund was established by associates in 2018 and has made significant impacts in RS&H communities since then. This year, we donated nearly \$100,000 to 24 nonprofits in communities across the country with a continued focus on helping people in need, supporting children and providing educational programming.

Total Donated Since 2018 Inception

\$199,000+

In Grants Awarded

38

Nonprofits

9

States

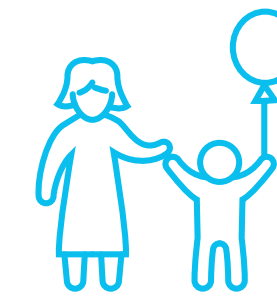
23,217

Served



People in Need

We are industry professionals – from engineers to architects and everything in between – but we are first and foremost community members. With that comes a responsibility to help those in need. RS&H takes that pursuit seriously. We support nonprofits in low-income communities, including organizations that provide food for seniors and build wheelchair ramps for people with disabilities.



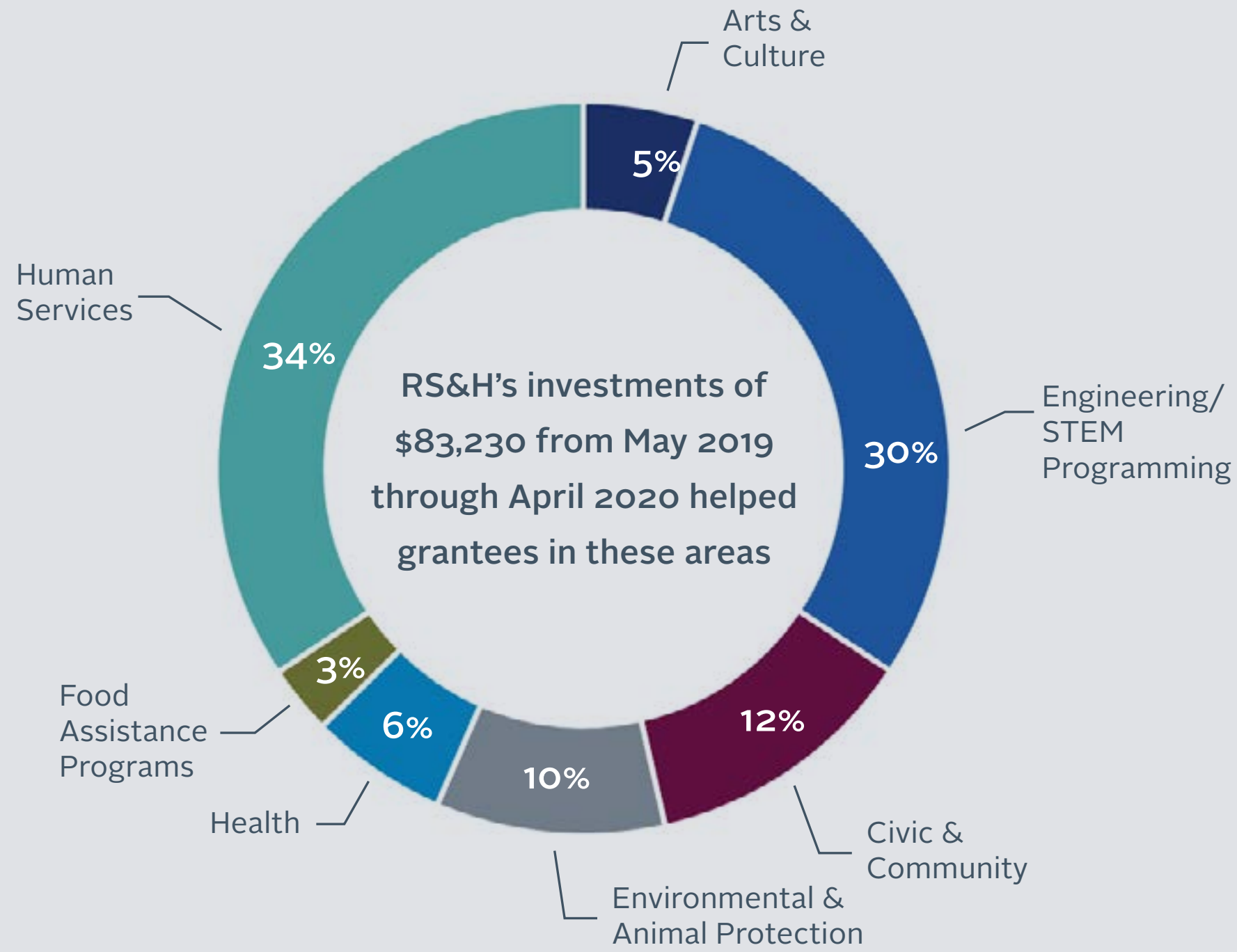
Children & Youth Programs

Everyone deserves a voice. That's a belief we practice in our project work and one that extends into our community involvement efforts. The Elevate Fund centers much of its giving on children, in hopes that our support will amplify the voices of this group that is all too often unable to advocate for themselves.



Enhancing Education

Education is the difference between being left behind and blazing a path forward. As our world moves into a new era, we recognize that knowledge will become ever more important, especially within the STEM and environmental sustainability fields. With that in mind, RS&H supports educational opportunities for children, with particular emphasis on these skills of tomorrow.



Elevate Fund Grants Outcome Summary

Measuring high-level outcomes across the 24 grantees shows tangible results. Since inception, grant-making focused on our three core areas, which helped grantees to:

- Educate youth on engineering fields through STEM programming
- Provide services to promote the welfare of those in need and people with disabilities
- Provide educational materials to teachers and allow children to participate in after school programs
- Address issues of public concern to make a difference in the community
- Provide necessary meals to food insecure individuals
- Provide youth sporting activities

Grantee	Award	Served	Area of Focus
Girl Scouts of Gateway Council	\$7,500	58	Youth Programs, Enhancing Education
Reach Unlimited	\$6,500	1	People in Need
Communities in Schools of Jacksonville, Inc.	\$6,430	26	Youth Programs, Enhancing Education
World Relief DuPage/Aurora	\$6,000	130	People in Need
Theatre Jacksonville Inc.	\$5,300	10	Youth Programs
CASA Kane County	\$5,000	830	Youth Programs
Colorado Association of Black Professional Engineers and Scientists (CABPES)	\$5,000	50	Youth Programs, Enhancing Education
Construction Trade School (CTS)	\$5,000	16	Youth Programs, Enhancing Education
Heritage Camps	\$5,000	886	Youth Programs, Enhancing Education
Kgs For Warriors	\$5,000	50	People in Need
Mathcounts Foundation	\$5,000	500	Enhancing Education
Movember Foundation	\$5,000	45	People in Need
North Florida School of Special Education	\$5,000	30	Youth Programs, Enhancing Education
Playa Sunrise Rotary Club Foundation, Inc.	\$5,000	67	Youth Programs, Enhancing Education, People in Need
The Park People	\$3,500	14	People in Need
Beaches Habitat for Humanity	\$3,000	1 (family)	People in Need
Center for Independent Living	\$3,000	1	People in Need
The Independent Living Resource Center	\$3,000	5	People in Need
Feeding Northeast Florida	\$2,070	~585	People in Need
Florida Youth Rugby Union, Inc.	\$2,000	24	Youth Programs
Sporting Jacksonville	\$2,000	50	Youth Programs
Atlanta Community Food Bank	\$1,000	~ 4,000 meals	People in Need
Sophie's Circle	\$1,000	2,127	People in Need
FRIENDS Down Syndrome Network of East Tennessee	\$1,000	400	People in Need

~This is an estimate based on information provided.



67
People
Served

Investment Breakdown

K9 for Warriors

The grant supported K9 for Warriors' capital program, which funded the Petco Foundation K9 Center, a 250-run "mega kennel" in Texas. The funding will also help build the Chartrand Family Warrior Resource Center (CFWRC), which will house current, past and future warrior support services, including additional dormitory space, wraparound services, research, government affairs and advocacy.

50 People
Served

F.R.I.E.N.D.S. Down Syndrome Network of Northeast Tennessee and Southwest Virginia

The F.R.I.E.N.D.S Network exists to enhance the quality of life for those with Down syndrome by offering members group support and promoting increased understanding of Down syndrome in the community. The Elevate Fund supported this mission by providing funds for decorations, food and gifts at the annual holiday social.

400 People
Served

Playa Vista Sunrise Rotary

The Sunrise Rotary Club works to give back to communities in need and participates in dozens of projects each year. The club's Elevate grant allowed for mini grants of up to \$400 each to be distributed to 67 teachers from 22 schools. The mini grants went toward calculators, books, projectors and other educational materials.

North Florida School of Special Education

The North Florida School of Special Education gives students ages 6 to 22 a place to learn, thrive and grow. Using the Elevate grant, the school created a sensory path that will allow students to express themselves and have a new way to explore.

30 People
Served

Colorado Association of Black Professional Engineers and Scientists (CABPES)

CABPES used the funds to support their JETS (Junior Engineers Tomorrow's Scientists) program, "Building a Green Future," which allowed 50 students to learn about green cities over five months. The students presented at the CABPES 38th Annual Student Awards Banquet in front of 400 guests. Students were able to learn about aerospace, civil engineering, computer science, construction, microcontrollers and project management.

50 People Served



5 Children Served

The Movember Foundation

The Movember Foundation focuses on supporting men's health efforts in communities across the country. The grant was used to match RS&H associates' donations during the No Shave November fundraiser. The funding will help over 1,000 programs, focusing on prostate cancer, testicular cancer, mental health and physical inactivity.

45 People Served

MATHCOUNTS Foundation

The Northeast Florida Mathcounts Competition helps middle school students hone their math skills, while developing a passion for the subject. 42 schools participated in last year's competition, with Elevate funds used to rent the facility for the competition and purchase signage, awards and trophies.

500 People Served

The Independent Living Resource Center, Inc.

The ILRC has helped to empower the northeast Florida disability community since 1978. Elevate funding went toward the creation of Halloween costumes for children in wheelchairs, a design and construction effort RS&H associates have been involved with for several years.

The Park People

The organization is passionate about local parks, city trees and shared community resources. They aim to provide healthy parks to encourage healthy communities. The grant was used to allow employees and their families to plant trees in a local Denver park.

14 People Served

Communities in Schools of Jacksonville

The Communities in Schools of Jacksonville grant funded a FIRST LEGO League, a guided, global robotics program that builds real-world problem-solving skills. 26 students from various schools participated. After-school programs like the FIRST LEGO League allow students to explore and learn, reaching their full potential.

26 People Served

Sophies Circle

Sophie's Circle helps animals in need through its pet food pantry and dog rescue. The Elevate grant went directly to medical expenses for 18 animals and toward pet food for families who visit the pantry weekly to provide for their animals. Jake, a St. Bernard, is just one animal who benefitted from the grant. He came to the rescue severely underweight and with health issues, but he was able to be adopted after rehabilitation.

2,127 People Served

Construction Trade School

The grant was used to supplement the tuition for low-income and middle-low income students who are unemployed or underemployed. CTS provides interpersonal and life skills training for students.

16 People Served





58 People Served

Girl Scouts of Gateway Council, Inc.

Using the funds, the Girl Scouts of Gateway Council held a summer camp designed to increase girls' confidence and skills in science, technology, engineering and math (STEM) subjects – and ultimately reduce the gender gap within related fields.

World Relief DuPage/Aurora

World Relief DuPage/Aurora is a nonprofit that aims to support academic and psychosocial enrichment clubs for refugee and other immigrant youth. Elevate funding was used for students to participate in after-school clubs. As a result of the clubs, 84 percent improved their English language comprehension, speaking, reading and writing abilities, as measured by a standardized test conducted both before and after the clubs.

130 People Served

Reach Unlimited

Reach Unlimited is dedicated to providing quality support services for people with intellectual and developmental disabilities. Its vision is to create a sustainable, secure environment where people with developmental disabilities can become all they are created to be. The grant was used to create a wheelchair-accessible bathroom for a community member who suffered a traumatic brain injury.

1 Wheelchair Ramp Built

Sporting Jax

Sporting Jax works to level the playing field through no-cost soccer programs for children in urban Jacksonville. As part of the programs, students take part in biweekly soccer programs throughout the school year and summer. The Elevate grant supported the nonprofit's mission by funding the participation of 50 children in the initiative.

50 People Served

Beaches Habitat for Humanity

Beaches Habitat for Humanity is a nonprofit, ecumenical Christian housing ministry dedicated to eliminating substandard housing in the Jacksonville Beaches. Funding was used to build a home for a family in need.

1 Family Home Built

Theatre Jacksonville

Funding was used to send 10 students to the theatre's Make. Believe. Summer Camp. During each four-week session, campers cycle daily through classes in acting, musical theatre, dance and improvisation, under the guidance of their professional instructing team and assisted by some of the area's best and brightest high schoolers as camp counselors.

10 People Served

Florida Youth Rugby Union

Boyton Beach Rugby is a volunteer driven nonprofit that allows kids 19 and younger to play rugby for free. The grant allowed the U19 team to compete in a tournament in which the boys took home 1st place and the girls took home 2nd place.

24 People Served

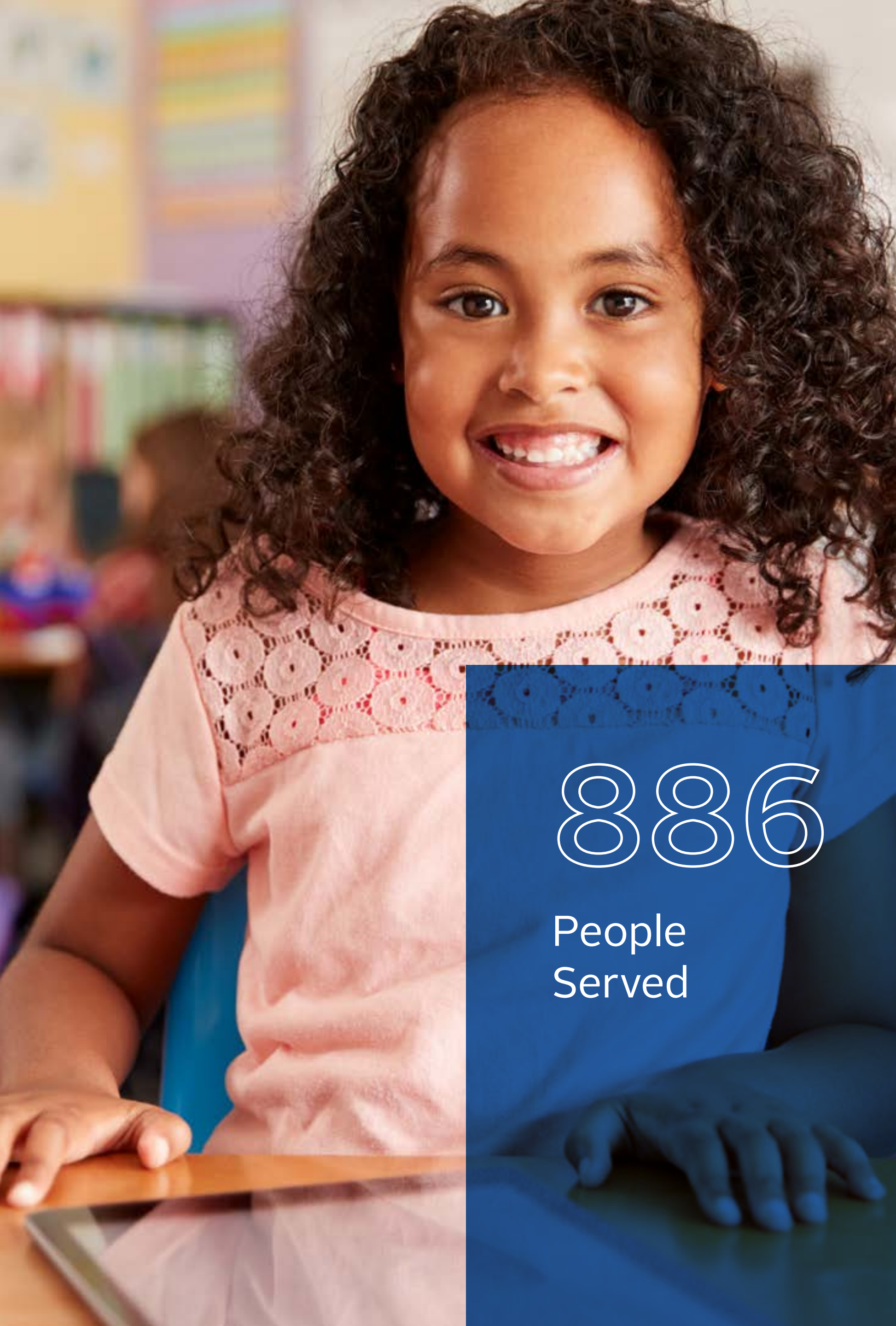
Atlanta Community Food Bank

The Atlanta Community Food Bank distributes over 60 million pounds of grocery products a year to more than 600 nonprofit agencies serving needy families within the Atlanta and North Georgia area. Each dollar collected provides meals for 4 families.

~4,000 Meals Donated

~This is an estimate based on information provided.





Feeding Northeast Florida

Feeding Northeast Florida's (FNEFL) Mobile Pantry Program is one of the food bank's core programs used in the fight against hunger. A mobile pantry is an event where fresh, frozen and shelf-stable foods are delivered and distributed to food-insecure individuals and families at no charge. The Elevate grant funded one mobile food distribution event, covering the value of the food, staff wages, supplies, overhead and operation of the refrigerated box truck that transports the food.

~585 People Served

CASA Kane County

The grant was used for training of community volunteers who serve as each child's Guardian ad Litem (GAL) for CASA in Illinois. The grant provided for the 45-hour training program for 23 new CASA/GAL volunteers. Volunteers will now serve as advocates for children in in the juvenile and probate court system in Kane County. They are appointed by the juvenile court judges to advocate for abused or neglected children, to make sure they don't get lost in the overburdened legal and social service system or languish in inappropriate group or foster homes.

830 People Served

886

People Served

Heritage Camps

Heritage Camps provides adopted children and adults and their families with a deeper sense of community and individual identity through its annual summer camps. The Elevate grant helped fund room and board for counselors and volunteers at the 2019 summer camps. Each camp offered children authentic cultural programming and age-appropriate workshops about identity and being adopted. The camps provided parents with culturally related workshops as well as programming taught by leaders in fields including adoption, child development and education.

Center for Independent Living

The Center for Independent Living (CIL) aims to help people with any form of disability live independently. Funds given to CIL were used to build a wheelchair ramp for a community member, making it possible for her to enter and exit her home more easily.

1 Wheelchair Ramp Built

~This is an estimate based on information provided.



RS&H Elevate
Building a better tomorrow, together