

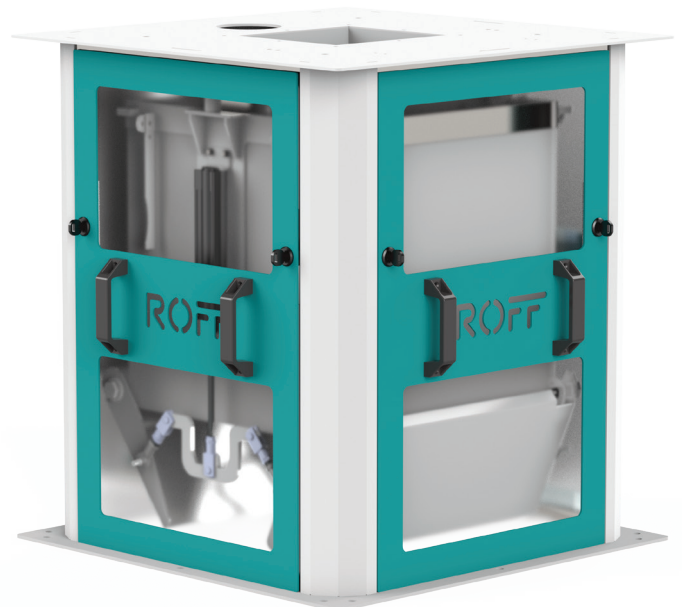
# ROFF<sup>®</sup> MILLING

MACHINES THAT DRIVE SUCCESS

## PROCESS WEIGHER 60 LITRE

### Process Performance

With an integrated touch screen PLC and a capacity of 60 litre per cycle, the Roff Process Weigher can be used as a stand-alone unit or connected to a system PLC to provide real-time throughput and performance data.



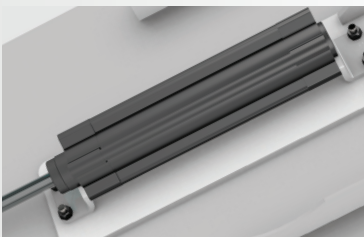
# MACHINES THAT DRIVE PERFORMANCE

## Capacity and Specifications

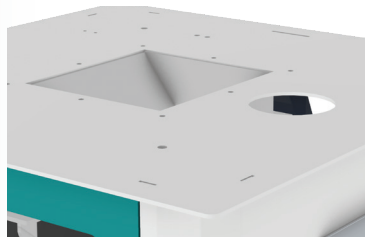
Volume per cycle:	60 litre
Performance:	7 ton/hour (maize meal)
Cylinders:	Festo
Hmi:	Touch screen
Aspiration points:	1
Compressed air:	6 Bar required
Dimensions (mm):	700(L) X 700(W) X 760(H)

## Highlights

- > Real-time process performance
- > Adjustable dump cycles based on time or weight
- > Optional integration into an existing PLC - confirm before order
- > Touch screen HMI
- > Low maintenance
- > Multiple purpose radial flap gate - compact



FESTO Pneumatic Cylinders



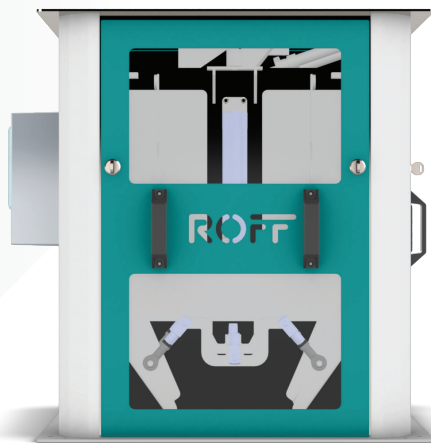
Inlet and Aspiration



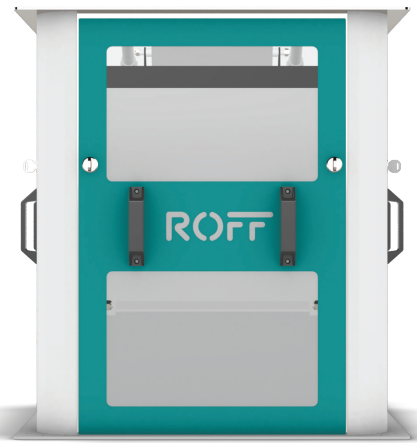
Touch Screen Control

**ROFF**  
MILLING  
MACHINES THAT DRIVE SUCCESS

760 mm



700 mm



700 mm