

Technical Bulletin#: TB-LD009

Revision Level: A

Title: Using Life Defender Gen 3 Tag Brackets

Purpose: 1) To show how a Tag Bracket is installed; and  
2) To show how the Tag Bracket Drill Jig is used.

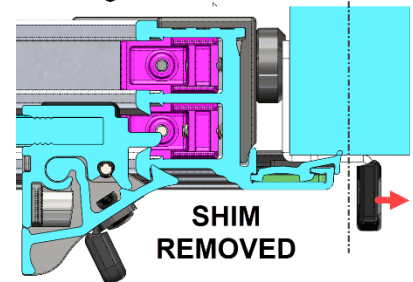
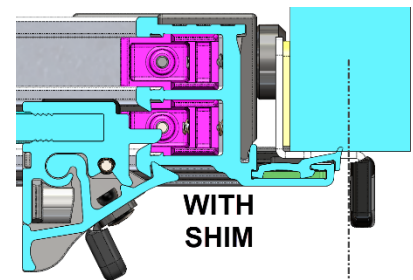
### Features of Gen 3 Tag Brackets:

- Gen 3 Tag Brackets now have over-molded ends that provide a soft and smooth area for the tag to be inserted through.
- The “cabinet” bracket is the same except for the new over-molded cover.
- The Slider handle now has its own bracket that gets attached to the handle with rivets.
- A properly applied security tag will prevent the sliders from sliding AND the Restocker from lifting (until the security tag is cut).



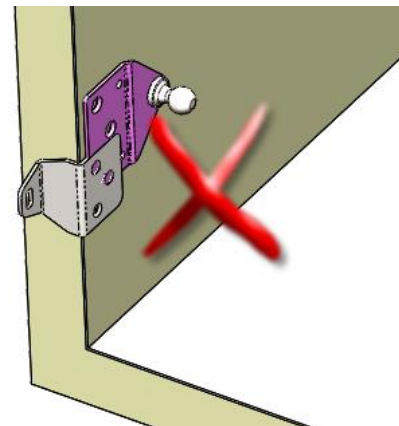
### Using the “cabinet” Tag Bracket:

- The “CABINET” Tag Bracket has a plastic spacer pre-applied that can be removed to increase the offset when necessary.
- Use #6 Flat Head Screws to secure the bracket.



### Positioning the CABINET Tag Bracket

- On RESTOCKER frames:
  - For most restockers the CABINET bracket can be installed in the middle without interfering with gas spring brackets.
  - Install the Fixed Bracket for the Gas Springs (or Dampers) **BEFORE** installing the Tag Bracket. Depending on the height of the cabinet, the opening angle, and the gas spring used, the location of the Fixed Gas Spring Bracket may interfere with the Tag Bracket if you install the Tag Bracket first.
- On FIXED Frames:
  - You have to install the CABINET Tag Brackets **BEFORE** you install (or “snap-in”) the Fixed Frame. Most applications call for it to be in the middle, but it can be positioned closer to the top or bottom if desired.

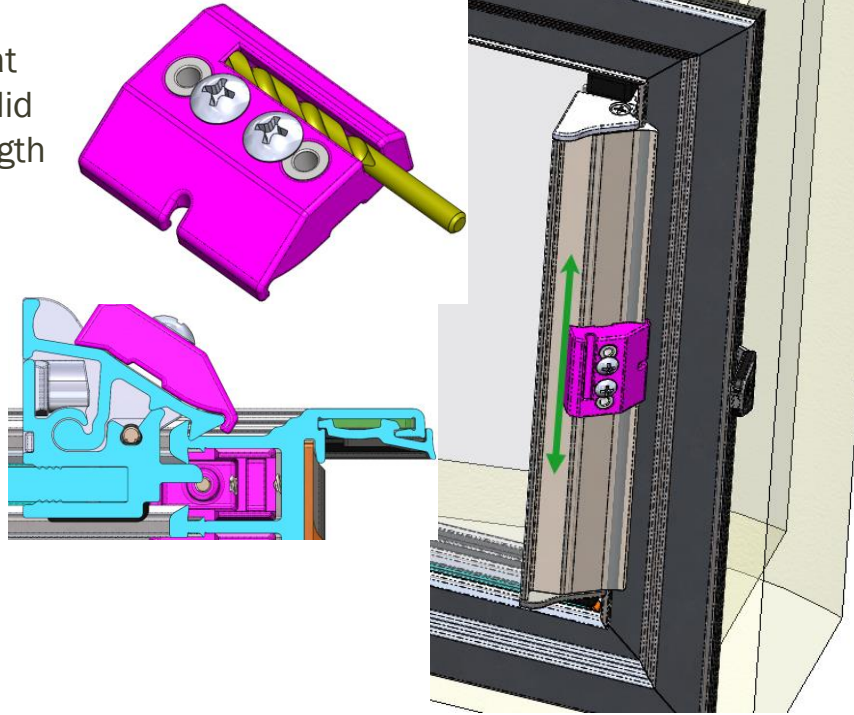


## TB-LD009 Using Life Defender Tag Brackets

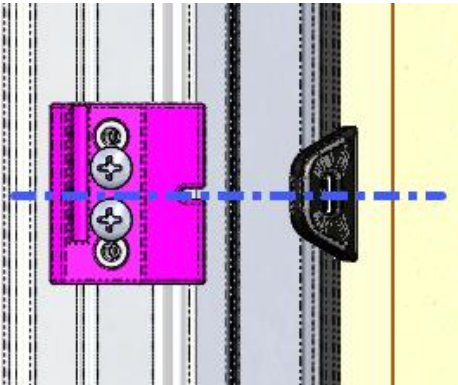
Rev: A

Installing the HANDLE Tag Bracket:

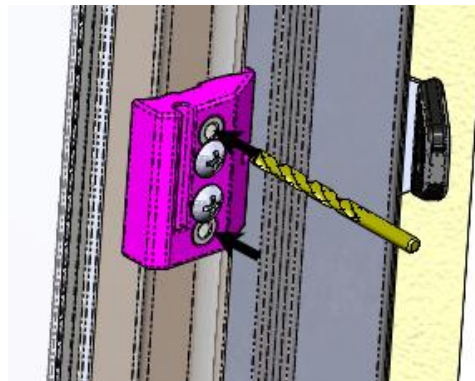
- Austin has a specially designed drill jig that locates on the Slider Handle and can be slid up and down to any position along the length of the Slider Handle.
- The Jig The most common position for the HANDLE bracket is in the middle.
- Locate the Jig in line with the CABINET Tag Bracket - use slot in Jig.
- Using the provided .1285" drill bit in a hand drill, hold the Jig securely and drill two holes through the handle.
- Remove the Drill Jig to expose the holes.
- Position the HANDLE Tag Bracket so its holes align with drilled holes.
- Secure bracket with two rivets provided.



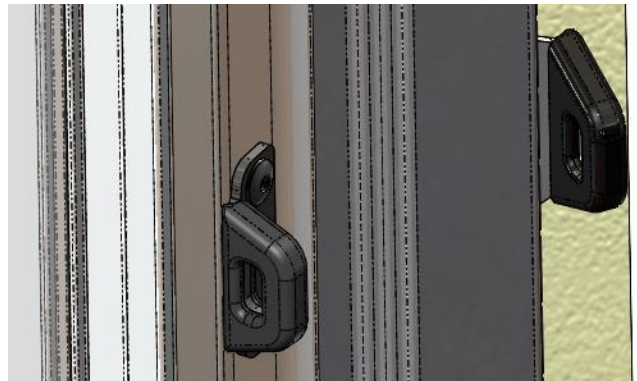
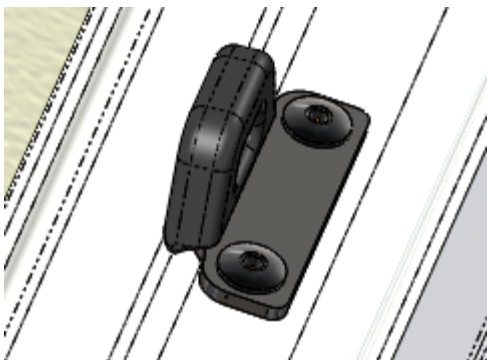
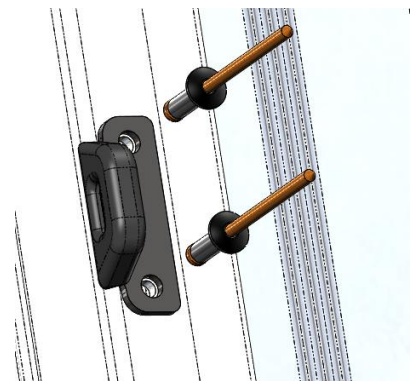
### LOCATE



### DRILL



### INSTALL



*Note that information contained in the Technical Bulletin is subject to change without notice. Austin Hardware did its best to convey accurate information herein; however, every situation is unique, and this information is for helpful reference only, and does not warrant any specific actions any end user undertakes relating to this information.*



### Using Tag Brackets With Fixed Panel Restockers

- On Fixed Frame Swing Doors, the CABINET Tag Bracket mounts to the cabinet in the same way.
- Make sure the CABINET Tag Bracket does not interfere with the Striker already mounted in the cabinet.
- Because there are no Sliders on a Fixed Panel Hinged Frame, there is no Slider Latch to mount the new LATCH Tag Bracket to.
- Instead locate the LATCH Tag Bracket as shown on the frame aligned with the CABINET Tag Bracket.
- Use the holes in the bracket as locators to drill through that area of the frame and then secure the bracket with the two rivets.

