

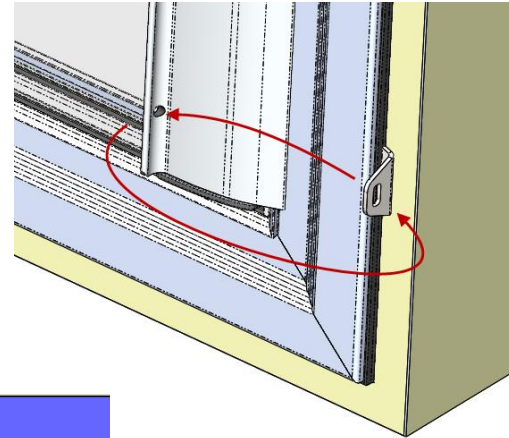
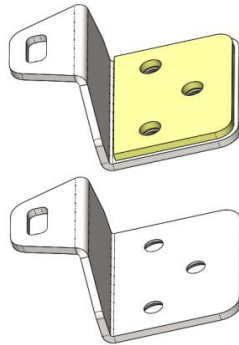
Technical Bulletin#: TB-LD005

Revision Level: A

Title: Using Life Defender Tag Brackets

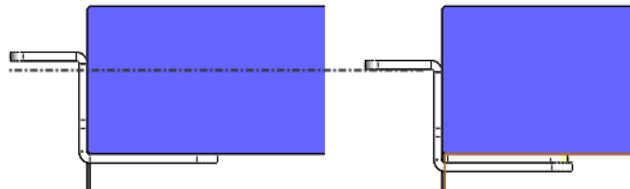
Purpose: 1) To show how a Tag Bracket is installed; and
2) To show how the Tag Bracket Drill Jig is used.

- Life Defender Tag Brackets allow end users to apply security tags to a cabinet.
- A properly applied security tag will prevent the sliders from sliding AND the Restocker from lifting (until the security tag is cut).
- User attaches the bracket to the cabinet and drills a hole into the slider handle
- Location is flexible.



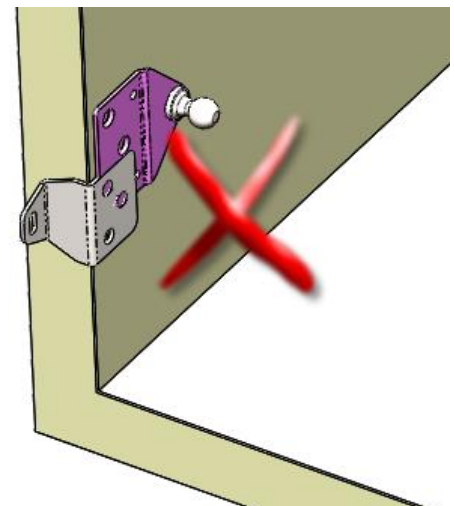
Using the Tag Bracket:

- The Tag Bracket has a removable plastic spacer pre-applied that can be removed to increase the offset.
- Most often the bracket works correctly when installed on the interior wall with the the spacer. But on some occasions, the exterior tab of the bracket may be too close to the frame. An example of this might be when a restocker frame is not properly centered in the opening. Removing the spacer increases the offset relative to the frame edge a little bit when necessary.



Positioning the Tag Bracket

- On RESTOCKER frames:
 - Install the Fixed Bracket for the Gas Springs (or Dampers) **BEFORE** installing the Tag Bracket. Depending on the height of the cabinet, the opening angle, and the gas spring used, the location of the Fixed Gas Spring Bracket may interfere with the Tag Bracket if you install the Tag Bracket first.
- On FIXED Frames:
 - You have to install the Tag Brackets **BEFORE** you install (or “snap-in”) the Fixed Frame. Some like it in the middle, but others prefer it near the bottom.

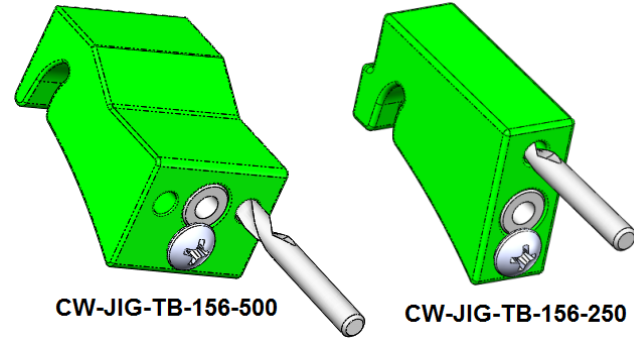


TB-LD005 Using Life Defender Tag Brackets

Rev: A

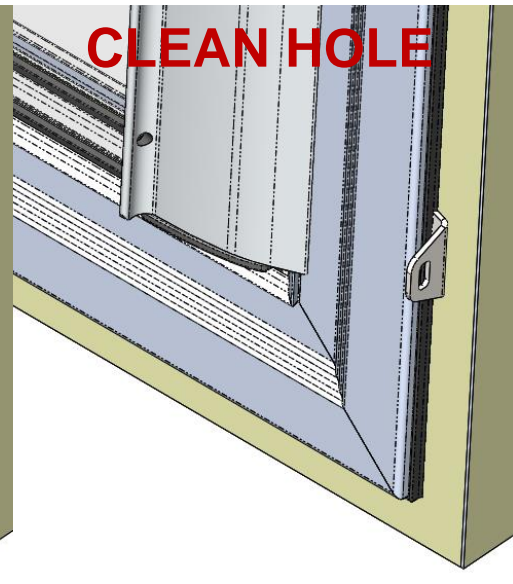
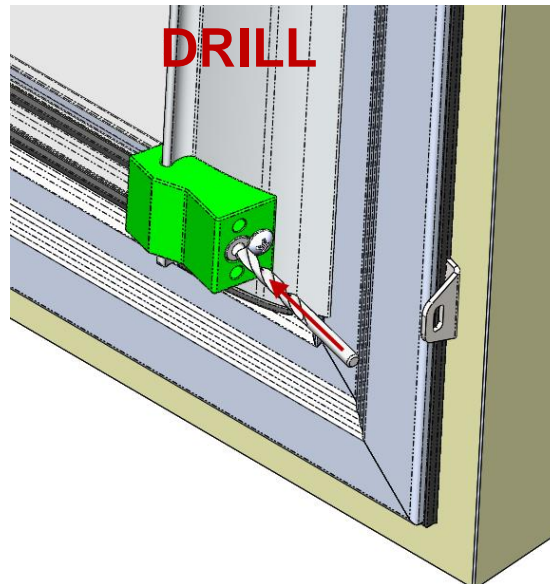
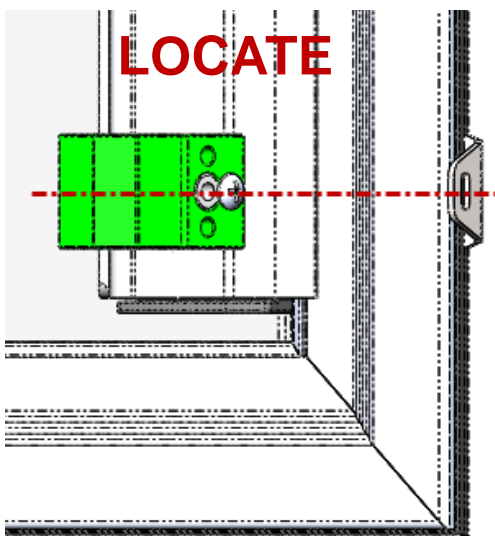
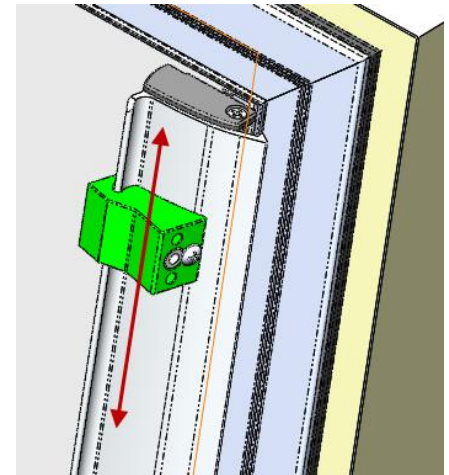
Understanding the Handle Hole Drill Jig

- Austin has two variations of a specially designed drill jig that fits onto the Slider Handle and allows the installer to easily and accurately drill a 5/32" hole through the handle anywhere along its length.
- The CW-JIG-TB-156-500 is 1.00" wide with the drill bushing in the center. It is more stable on the Handle.
- The CW-JIG-TB-156-250 is 0.50" wide with the bushing in the center. This can allow the user to drill holes as close as .25" from the ends of the Slider Handle.



Using the Drill Jig

- The Jig locates on the Slider Handle and can be slid up and down to any position along the length of the Slider Handle.
- Locate the Jig in line with the Tag Bracket using the bushing as the centering point.
- Using the provided 5/32" drill bit in a hand drill, guide the drill bit into the 5/32" bushing and drill through the handle.
- Be careful to not over-drill after the bit breaks through the handle. This will increase the life of the Jig.
- Remove the drill bit and then the Drill Jig to expose the hole. Some minor deburring of the hole may be necessary.



TB-LD005

Using Life Defender Tag Brackets

Rev: A

Using Tag Brackets With Fixed Panel Restockers

- On Fixed Frame Swing Doors, the Tag Bracket mounts to the cabinet in the same way.
- Make sure the Tag Bracket does not interfere with the Striker already mounted in the cabinet.
- Because there are no Sliders on a Fixed Panel Hinged Frame, securing the Frame to the cabinet with a Tag Out device requires a connection point on the Frame that has a loop or hole to pass the device through.
- In this case, we recommend using a small Footman Loop attached to the panel with screws and nuts.
- The Tag Bracket and Loop can be installed on the side (or sides) perpendicular to the latch; however on most applications mounting near the end of the latch works well.

