

Technical Bulletin#: TB-LD002

Revision Level: A

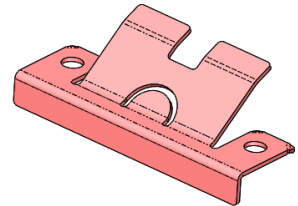
Title: Life Defender Spare Parts and Accessories

Purpose: To Provide Information on Spare Parts and Accessories That Austin Stocks for Customers

CF-C-FRAMECLIP-001
(SNAP-IN CLIP FOR FIXED FRAMES)

PURPOSE: This is required to mount all "CFFX" frames.
SOLD INDIVIDUALLY

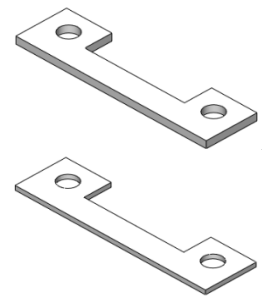
RECOMMENDATION: Buy in bulk and have available to pre-install into cabinets prior to installation of frames.



CF-C-CLIPSHIM-001-01 (.060" THICK PLASTIC)
CF-C-CLIPSHIM-001-02 (.100" THICK ALUMINUM)
(SHIMS FOR SNAP-IN CLIPS FOR FIXED FRAMES)

PURPOSE: On occasion the cabinet may be just a little too tall for the frame so it will be a little loose. When this occurs, installing these shims under the FRAMECLIPS makes the cabinet smaller and tightens up the frame in the cabinet.
SOLD INDIVIDUALLY

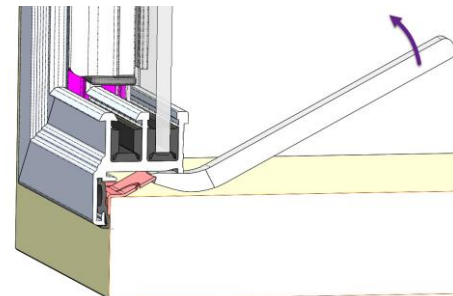
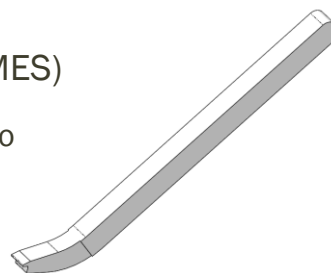
RECOMMENDATION: Buy in bulk and have available to use as needed.



CFFX-REMOVEABLE-TOOL
(TOOL TO AID IN REMOVAL OF FIXED FRAMES)

PURPOSE: This tool works with the FRAMECLIP to make it easier to remove a Fixed Frame.
SOLD INDIVIDUALLY

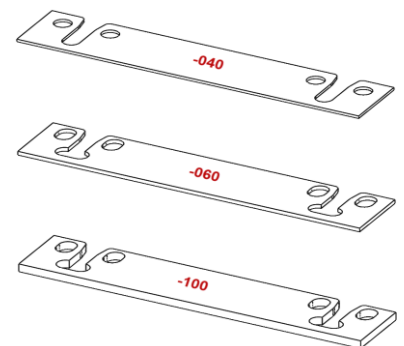
RECOMMENDATION: Buy one for each installer.



CF-C-HG-SHIM-040, CF-C-HG-SHIM-060, CF-C-HG-SHIM-100
(SHIMS FOR HINGED FRAMES)

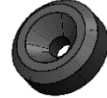
PURPOSE: These are used with restocker hinges to adjust the frame's latch relative to the striker. They are also used on CW Doors to adjust squareness or center gap. Use on CFT*, CFL*, CFR*, and CFB* frames.
SOLD INDIVIDUALLY

RECOMMENDATION: Buy in bulk and have available to adjust hinged frames as they are being installed.



TB-LD002**Rev: A****Spare Parts and Accessories****CF-C-SPACER-001 (SPACER FOR FRAMED DOORS)**

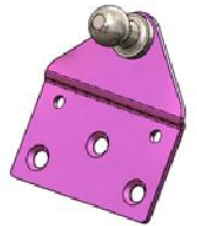
PURPOSE: These spacers help position the frames during installation.
SOLD INDIVIDUALLY



RECOMMENDATION: These can be bought in bulk and used when needed.

CF-C-GSB-A01-FIXED (FIXED BRACKET FOR GAS SPRING CABINET MOUNT)

PURPOSE: These mount in the cabinet and may occasionally get lost or get damaged.
SOLD INDIVIDUALLY

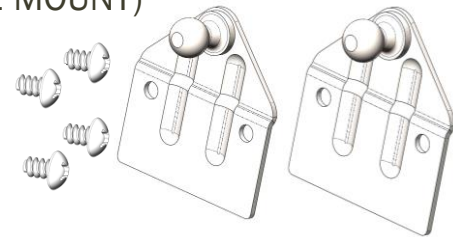


RECOMMENDATION: Buy a small quantity and have them available to installers when needed to replace the occasional lost or damaged bracket.

CF-GSB-KIT-STANDARD (STANDARD MOVING BRACKET KIT - FRAME MOUNT)

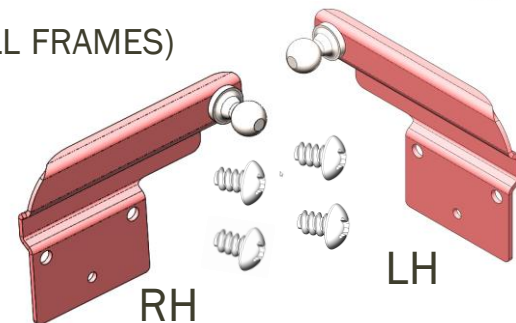
PURPOSE: These brackets mount on the frame with screws.
SOLD AS A KIT (2 BRACKETS & 4 SCREWS)

RECOMMENDATION: Buy a small quantity and have them available to installers when needed to replace a frame bracket.

**CF-GSB-KIT-OFFSET (OFFSET MOVING BRACKET KIT FOR SMALL FRAMES)**

PURPOSE: These brackets are used on small frames and with short gas springs (<=3" stroke). The ball is offset to move it closer to the hinge.
SOLD AS A KIT (1 LH BRACKET, 1 RH BRACKET, & 4 SCREWS)

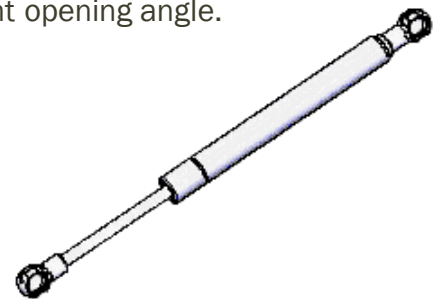
RECOMMENDATION: Buy a small quantity and have them available to installers when needed.

**GAS SPRINGS (VARIOUS SIZES)**

PURPOSE: Each restocker cabinet comes with gas springs designed for that size and weight, but they may occasionally get lost or damaged, or the end user may want a different opening angle.
SOLD INDIVIDUALLY

Commons Sizes:

- GSS 1713UE – 7.50" XL; 2.20" STROKE, 18#
- GSS 1777UC – 12.01" XL; 4.25" STROKE; 18#
- GSS 1791UU – 15.00" XL; 5.50" STROKE 18#
- GSS 1792UP – 15.00" XL; 5.50" STROKE; 29#
- GSS 1801UN – 17.20" XL; 7.00" STROKE; 29#



RECOMMENDATION: There are several varieties of gas springs used on frames and they are kept in stock at Austin. Since the need for these should be infrequent, we recommend only ordering when needed.

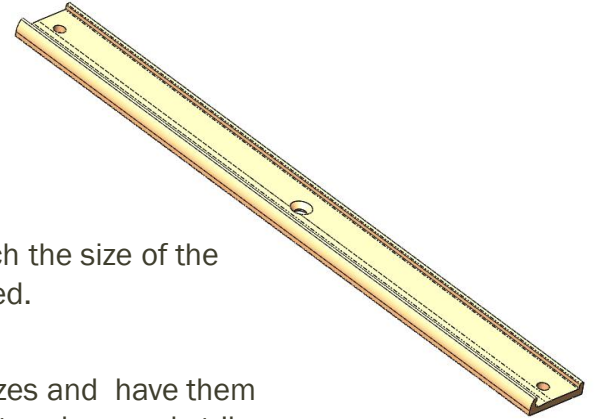
Note that information contained in the Technical Bulletin is subject to change without notice. Austin Hardware did its best to convey accurate information herein; however, every situation is unique, and this information is for helpful reference only, and does not warrant any specific actions any end user undertakes relating to this information.

TB-LD002

Rev: A

Spare Parts and Accessories

CF-C-RSL04-0600 (FOR 6" LATCH)
CF-C-RSL01-1200 (FOR 12" LATCH)
CF-C-RSL01-1800 (FOR 18" LATCH)
CF-C-RSL01-2400 (FOR 24" LATCH)
(STRIKERS FOR RESTOCKER FRAME)



PURPOSE: One of these comes with each latching frame to match the size of the latch on that frame. Occasional one may become lost or damaged.

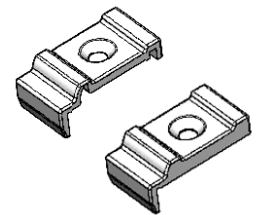
SOLD INDIVIDUALLY

RECOMMENDATION: Buy a small quantity of the most popular sizes and have them available to installers when needed to replace the occasional lost or damaged striker.

CF-C-RSL-ENDCAP-KIT
(END CAP KIT FOR RSL STRIKER)

PURPOSE: These end caps locate on each end of the striker and properly locate the striker onto the frame. They can occasionally get lost or damaged.

SOLD AS A KIT



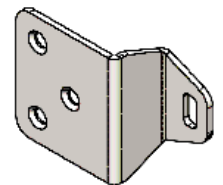
RECOMMENDATION: Buy in bulk and have available to installers when occasionally needed.

CF-C-TAGBRACKET-003
(INVENTORY CONTROL BRACKET)

PURPOSE: This allows a frame with sliders to be locked out (with a control band). Use on CFT*, CFL*, CFR*, and CFB* frames when a customer requires it.

SOLD INDIVIDUALLY

RECOMMENDATION: Buy in bulk and have available to install when needed per customer.

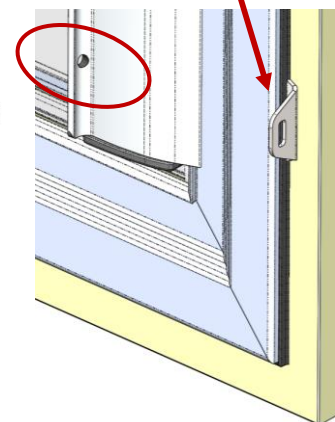
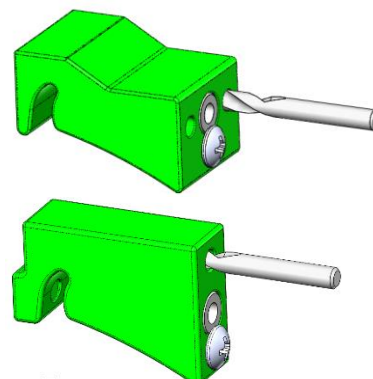


CF-JIG-TB-156-500 (1.00" WIDE)
CF-JIG-TB-156-250 (0.50" WIDE)
(TAG BRACKET HANDLE HOLE JIG)

PURPOSE: This jig slides along the Slider Handle and once positioned relative to the Tag Bracket will drill a 5/32" hole in the handle that allows a Band to be looped through the handle to lock it.

SOLD INDIVIDUALLY

RECOMMENDATION: Buy one for each installer.



TB-LD002

Rev: A

Spare Parts and Accessories

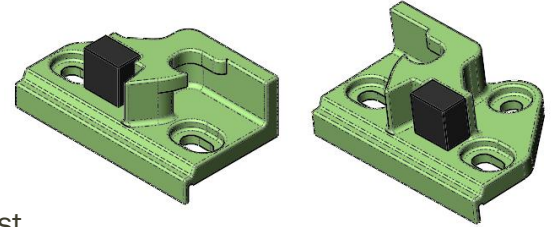
CW-STRIKERKIT-A01

(STRIKER KIT FOR GEN II DOOR)

PURPOSE: These strikers are used with Gen II Doors.

SOLD AS A KIT

RECOMMENDATION: Keep a few kits to keep in case a striker is lost.



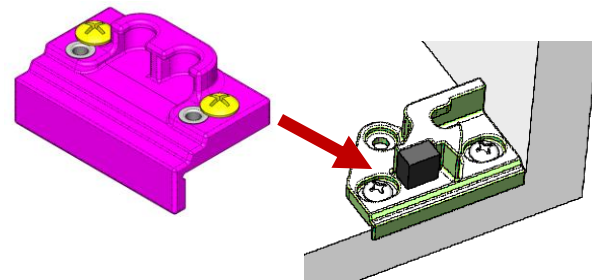
CW-JIG-STRIKER-001

(GEN II STRIKER MOUNT JIG)

PURPOSE: This jig locates the position of the Gen II Strikers, allows you to drill pilot holes in the correct locations, and allows you to adjust the striker head height.

SOLD INDIVIDUALLY

RECOMMENDATION: Buy one for each installer.



GEN II LOCK KITS

CW-LOCKKIT-LB-XXXX (LATCH ON BOTTOM)

CW-LOCKKIT-LT-XXXX (LATCH ON TOP)

CW-LOCKKIT-LL-XXXX (LATCH ON LEFT)

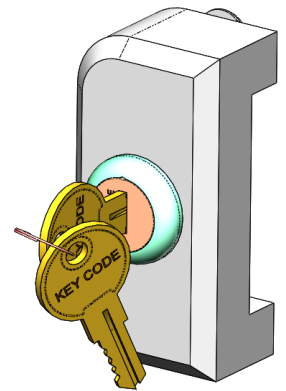
CW-LOCKKIT-LR-XXXX (LATCH ON RIGHT)

Key Codes available are **AH01** and **CH545**

PURPOSE: These locks work with Gen II Doors and Gen 1 Unframed Latches and allow the user to lock the door so its contents cannot be accessed unless unlocked. Includes attaching screws. Order lock based on the orientation (position) of the latch it will lock.

SOLD INDIVIDUALLY

RECOMMENDATION: Buy one for each installer.



CW-LOCKJIG-A257

(GEN II LOCK MOUNT JIG)

PURPOSE: This jig locates and drills the mounting holes required to attach the Gen II Lock Assembly.

RECOMMENDATION: Buy one for reach installer.

