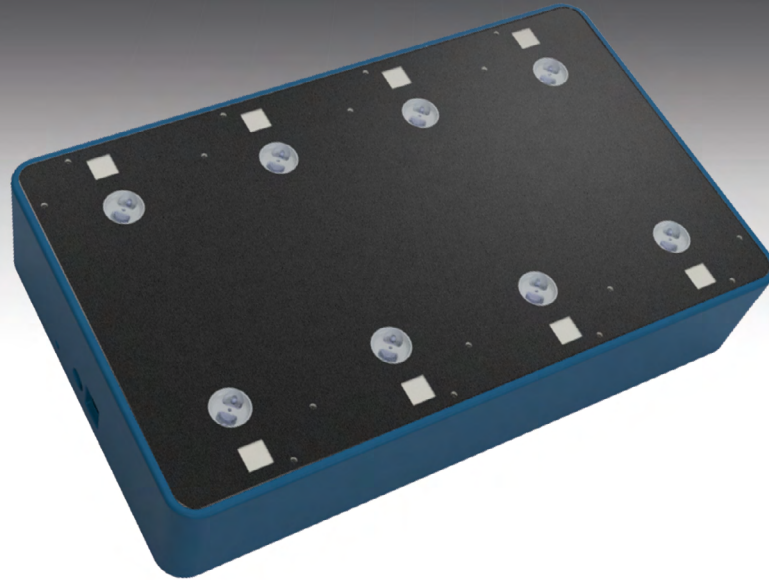


# CREATE A FUTURE OF POSSIBILITIES



## NIRONE® Lab

A compact and versatile material composition scanner system specifically designed for fast, accurate and reliable reference data collection.

THE SMART SENSING REVOLUTION

# START THE NEXT GENERATION OF SMART MATERIAL SENSING

## Introduction

A compact and versatile material composition scanner system specifically designed for fast, accurate and reliable reference data collection.

Through a set sensor modules powered by machine learning, the NIRONE Lab enables the collection of representative laboratory data and delivers it in a low-cost, portable platform.

## Technology

The core of the NIRONE Lab system are eight Near-Infrared spectral sensors combined with mobile and cloud connectivity to facilitate fast mass data management.

NIR-spectrometers are widely used in many fields to measure material content and have a proven track record in getting highly accurate measurement data in laboratory conditions - but in case of NIRONE sensors in a small, robust, inexpensive way.

## Operation

Optical reading requires no sample preparation and does not alter the sample in any way. The system can be operated by easily trained personnel to acquire a reference library of high-volume material in a quality assurance laboratory.

Our solution enables the data gathering with a statistical distribution of spectra, without operator errors and it runs without continuous monitoring.

## NIRONE Lab System includes:

- NIRONE Sensors S
- White Reference Targets for calibration
- Laptop with Scanning Software
- Back-up program
- Enclosure
- Battery
- Quick Guide

## Example applications:

- Pharmaceuticals composition analysis (anti-counterfeiting)
- Textile identification
- Plastics identification
- Narcotics and explosives detection
- Moisture analysis
- Soil analysis
- Grain, feed and dairy analysis



Bring your mobile NIR solution to the next level with the new and improved NIRONE Lab generation!

*It makes sense.*

SPECTRAL ENGINES® GMBH  
Weisskirchener Str. 2-6, 61449 Steinbach, GERMANY  
sales@spectralengines.com  
+49 6171 286 9760

SPECTRAL ENGINES® OY  
Kutomotie 18, 00380 Helsinki  
FINLAND

[WWW.SPECTRALENGINES.COM](http://WWW.SPECTRALENGINES.COM)

 **SPECTRAL ENGINES**