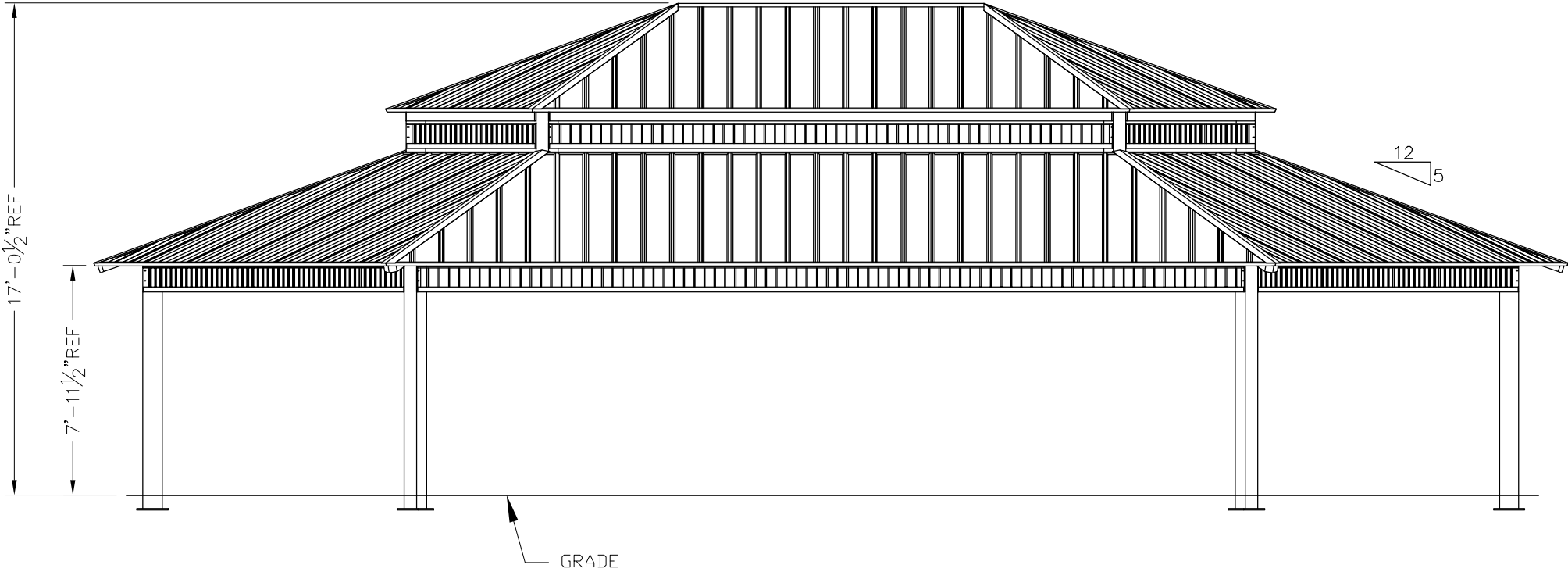
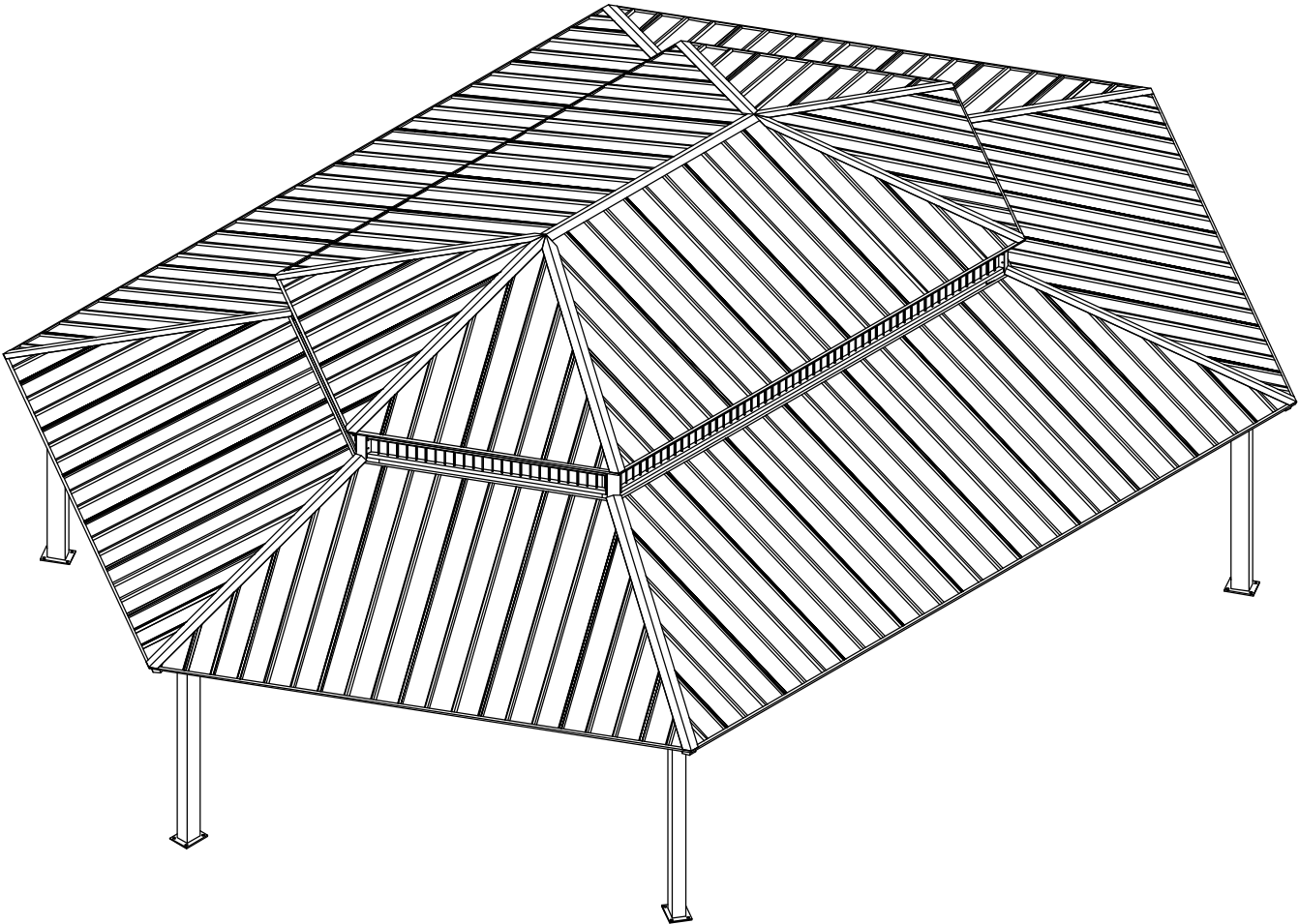


PRELIMINARY: NOT FOR
CONSTRUCTION



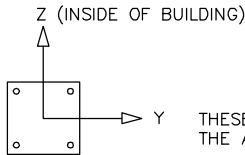
ICON
Shelter Systems Inc
DISTINCTIVE STEEL SHELTERS
WWW.ICONSHELTERS.COM
COPYRIGHT 2004, ICON SHELTER
SYSTEMS, INC.
1455 LINCOLN AVE.
HOLLAND MI, 49423
616.396.0919
800.748.0985
616.396.0944 FX

Elevation

DRAWN BY:
MB
DATE:
11/26/2014
JOB NO.:
STANARD
REVISION:
BUILDING TYPE:
SX35M2C
PROJECT NAME:

SHEET
1.0
Engineering\AcadStandards\Blocks\titles\ICONPRETIB
06-73-01-42

DWG: \\icon01\Company\Engineering\Standards\Shelters\SX\3551\M2C-P5-25-90-30\Drawings\Preliminary\SX35x51M2C-P5-25-90-30~29735.dwg

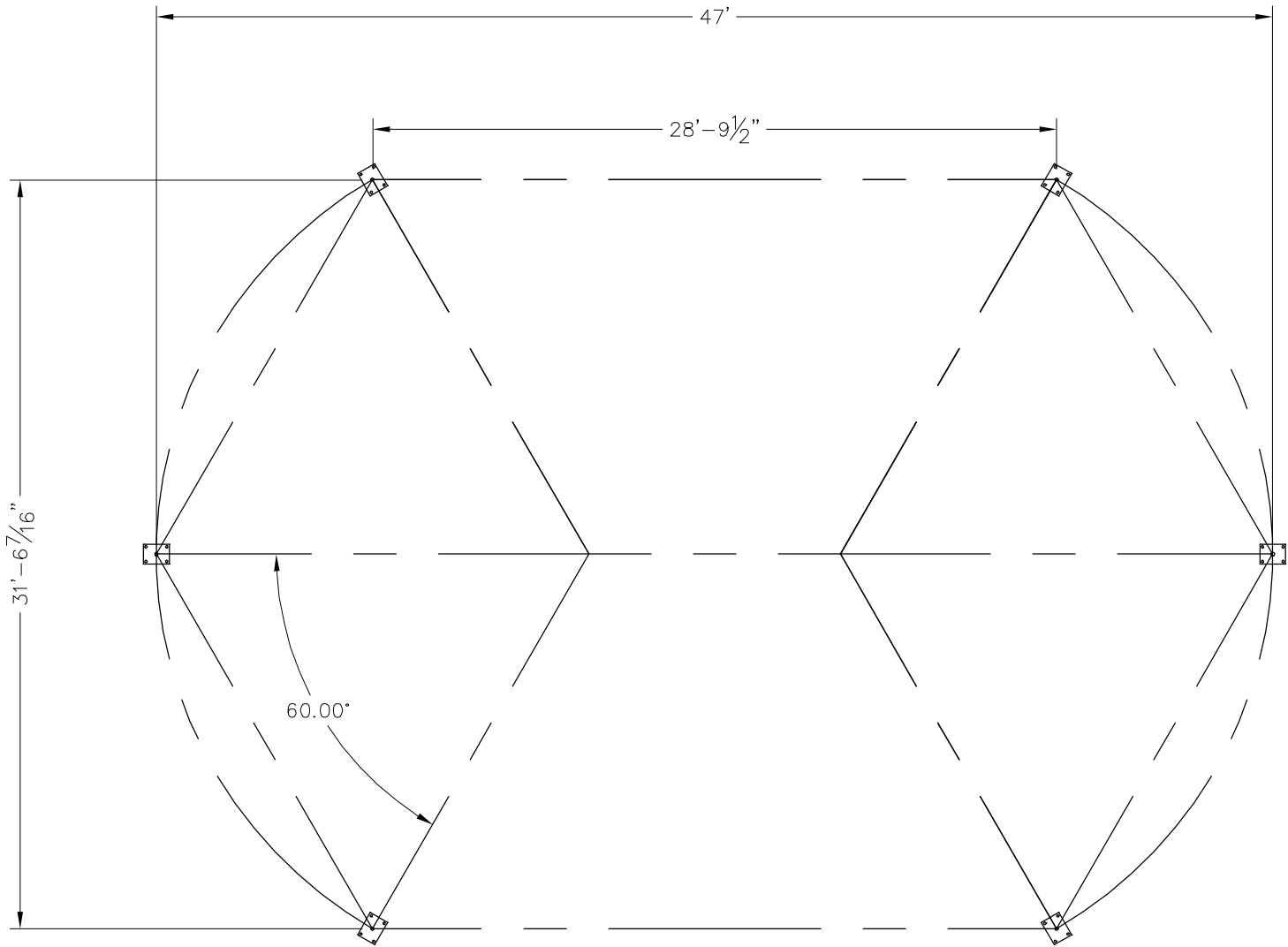


THESE FOUNDATION LOADS ARE FOR ESTIMATING PURPOSE ONLY.
THE ACTUAL LOADS WILL BE DETERMINED IN THE FINAL ENGINEERING

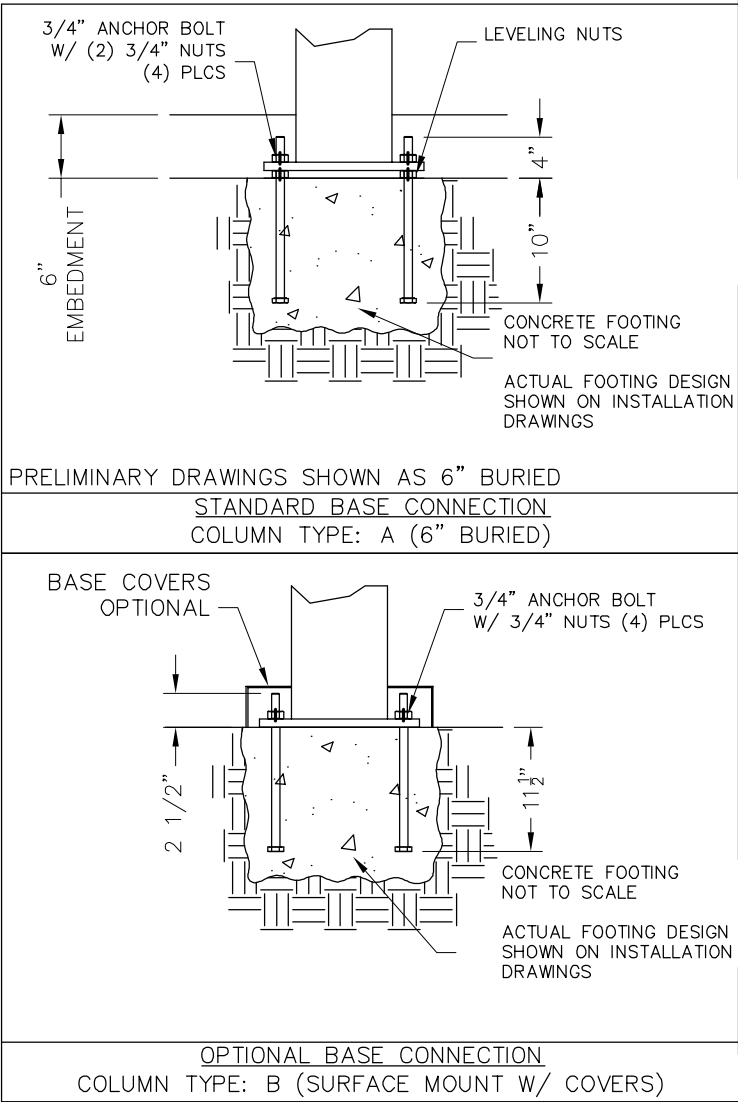
LOADS TO FOUNDATION (KIPS, IN-KIPS)	FOUNDATION LOADS					CL1
	AXIAL (Fx)	SHEAR (Fy)	SHEAR (Fz)	MOMENT (My)	MOMENT (Mz)	
DL	2.36	-0.17	0.37	-14.07	-6.21	
SL	6.05	-0.54	1.04	-39.48	-19.95	
W-UPLIFT	-2.73	-0.04	-0.78	41.69	2.68	
W-FY	-2.54	-0.49	-0.50	24.78	-26.67	
W-FZ	-2.73	0.04	-0.78	41.69	-2.68	
E-FY	0.00	-0.16	0.00	0.00	-9.93	
E-Z	-0.19	0.00	-0.23	17.12	0.00	

- NOTES:
- TABLE SHOWS UNFACTORED SERVICE LOADS
 - A FOUNDATION DESIGN HAS NOT BEEN PERFORMED BY ICON SHELTER SYSTEMS INC.
 - A LICENSED ENGINEER FAMILIAR WITH SOIL CONDITIONS AT CONSTRUCTION SITE MUST PERFORM A FOUNDATION DESIGN.
 - THE STRUCTURE HAS BEEN ENGINEERED AS AN OPEN STRUCTURE.
 - CONSULT ICON SHELTER SYSTEMS INC. IF THE STRUCTURE IS TO BE ENCLOSED.
 - COORDINATES ARE LOCAL TO THE COLUMN

DEFINITIONS:
DL = SERVICE LEVEL DEAD LOAD REACTION WITH THE GREATEST AXIAL LOAD
SL = SERVICE LEVEL SNOW LOAD REACTION WITH THE GREATEST AXIAL LOAD
W-UL = SERVICE LEVEL WIND LOAD REACTION WITH THE GREATEST UPLIFT LOAD
W-Y = SERVICE LEVEL WIND LOAD REACTION WITH THE GREATEST MAGNITUDE OF SHEAR IN THE LOCAL Y DIRECTION
W-Z = SERVICE LEVEL WIND LOAD REACTION WITH THE GREATEST SHEAR VALUE ACTING IN THE SAME DIRECTION AS THE DL SHEAR LOAD
E-Y = SERVICE LEVEL SEISMIC LOAD REACTION WITH THE GREATEST MAGNITUDE OF SHEAR IN THE LOCAL Y DIRECTION
E-Z = SERVICE LEVEL SEISMIC LOAD REACTION WITH THE GREATEST MAGNITUDE OF SHEAR IN THE LOCAL Z DIRECTION



ANCHOR BOLT LAYOUT



PRELIMINARY: NOT FOR CONSTRUCTION

ICON

Shelter Systems Inc

DISTINCTIVE STEEL SHELTERS

WWW.ICONSHELTERS.COM

COPYRIGHT 2004, ICON SHELTER SYSTEMS, INC.

1455 LINCOLN AVE.
HOLLAND MI, 49423

616.396.0919
800.748.0985
616.396.0944 FX

Anchor Bolt Layout

DRAWN BY:

MB

DATE:

11/26/2014

JOB NO.:

STANARD

REVISION:

BUILDING TYPE:

SX35M2C

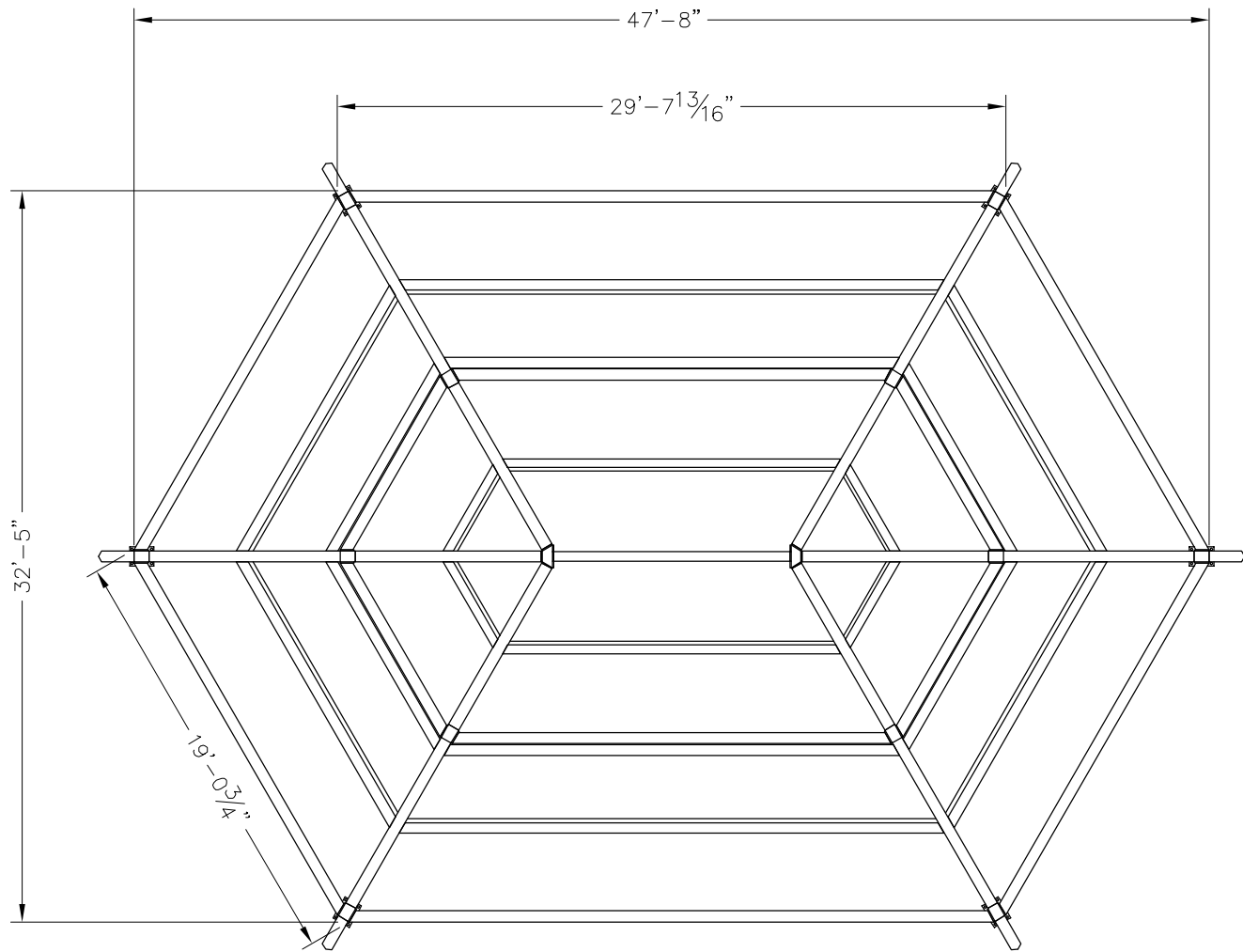
PROJECT NAME:

SHEET

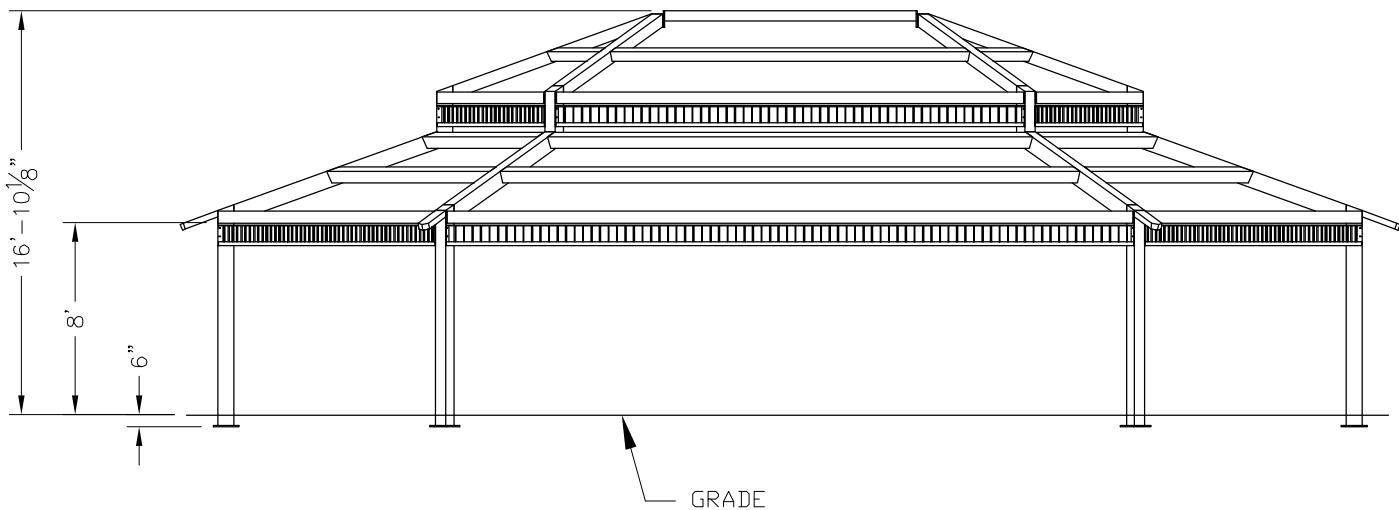
2.0

Engineering\AcadStandard\Blocks\Titles\ICONPRET.B

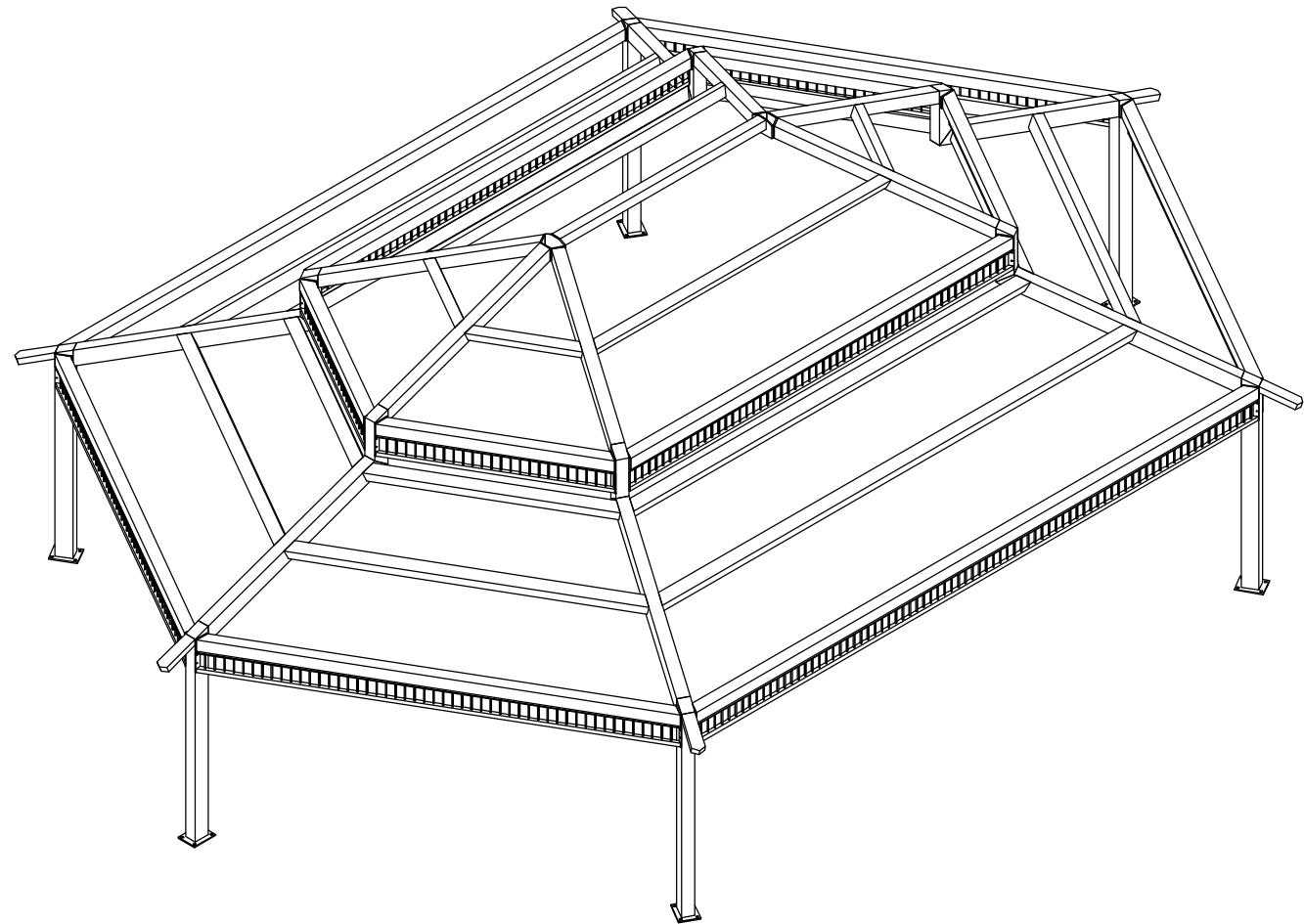
06-73-01-42



ANCHOR BOLT LAYOUT



ANCHOR BOLT LAYOUT



PRELIMINARY: NOT FOR CONSTRUCTION

ALL STRUCTURAL COMPONENTS WILL BE:
TUBE: ASTM A500 GRADE B
PLATE: ASTM A36
BOLTS: ASTM A325
NUTS: ASTM A563
WELDING: GMAW

NOTE:
COLUMN SIZE: HSS 8x6x3/16

ICON
Shelter Systems Inc
DISTINCTIVE STEEL SHELTERS
WWW.ICONSHelters.COM
COPYRIGHT 2004, ICON SHELTER
SYSTEMS, INC.
1455 LINCOLN AVE.
HOLLAND MI, 49423
616.396.0919
800.748.0985
616.396.0944 FX

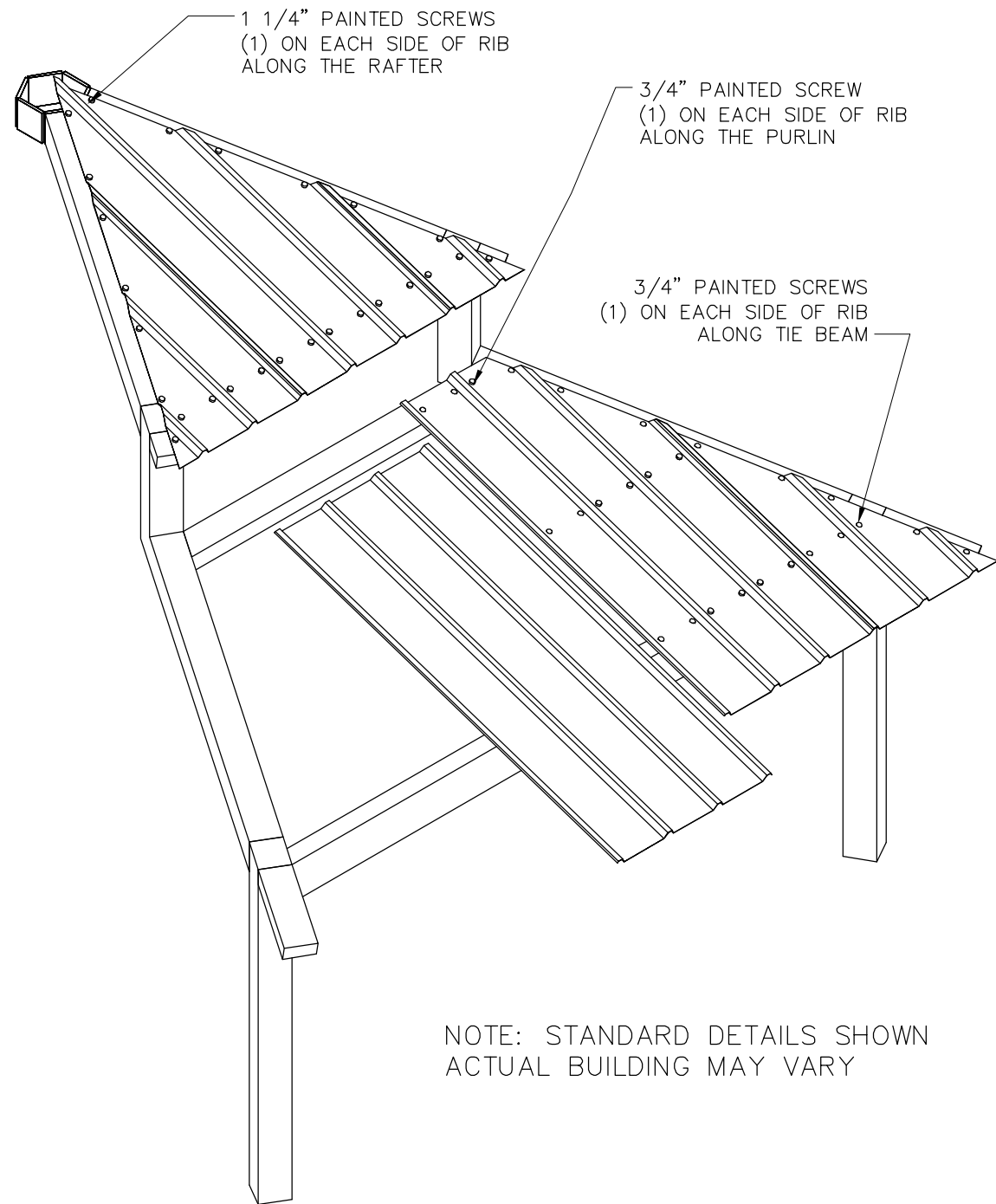
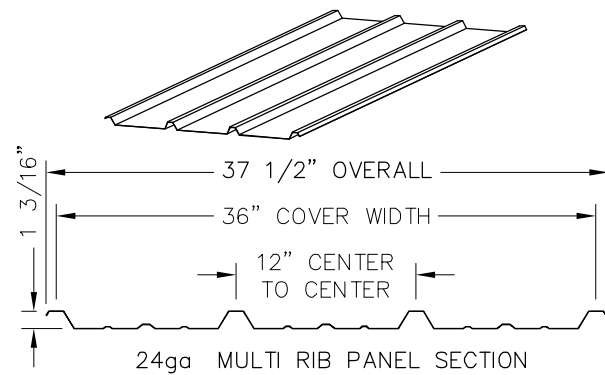
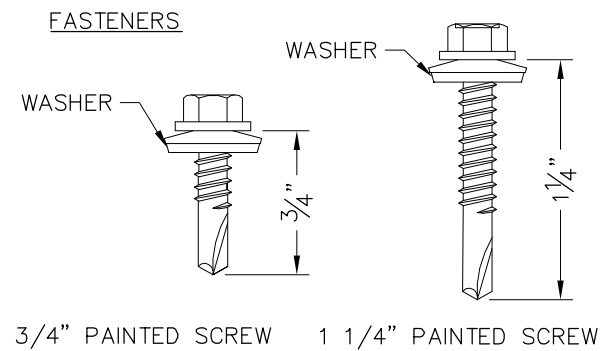
Frame

DRAWN BY:
MB
DATE:
11/26/2014
JOB NO.:
STANARD
REVISION:
BUILDING TYPE:
SX35M2C
PROJECT NAME:

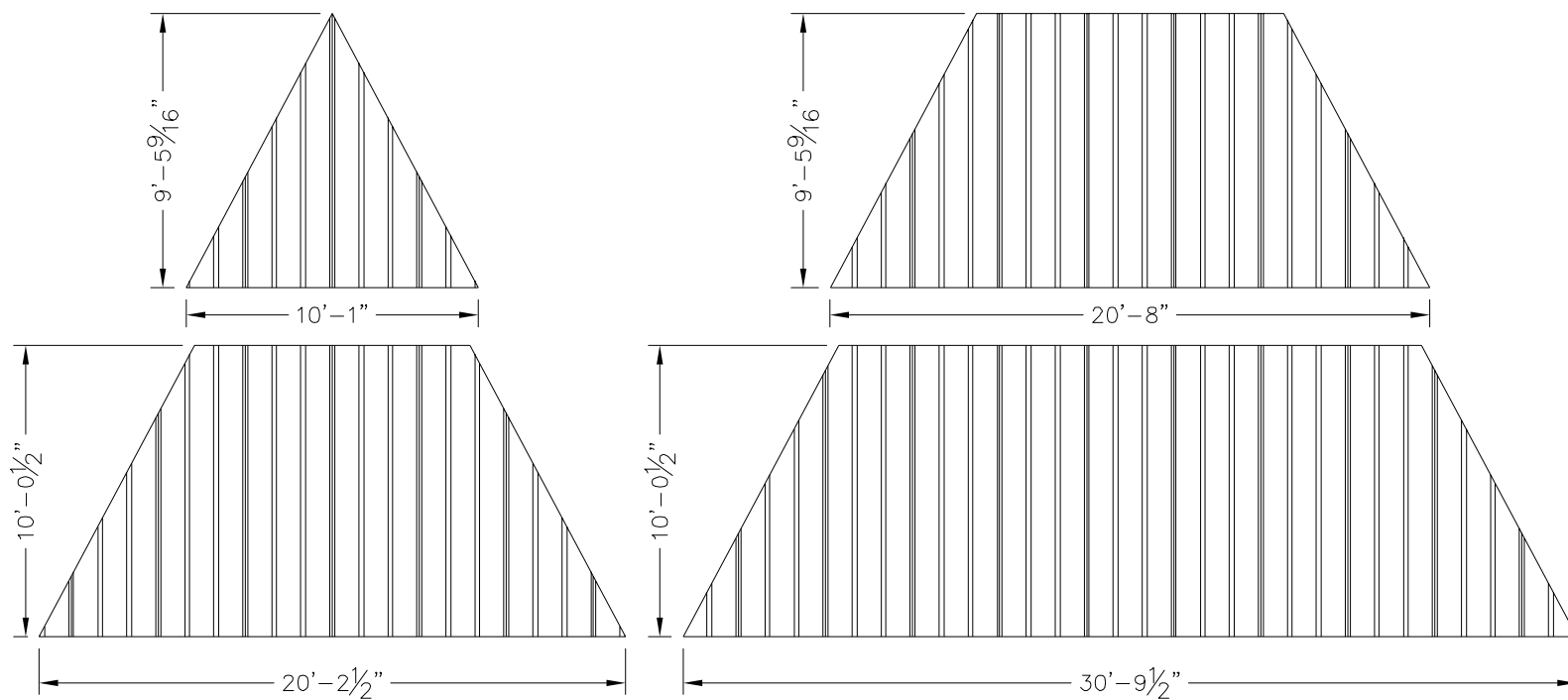
SHEET
3.0

Engineering\AcadStandard\Blocks\titles\CONCRETE
06-73-01-42

DWG: \\Icon01\Company\Engineering\Standards\Shelters\SX\3551\M2C-P5-25-90-30\Drawings\Preliminary\SX35x51M2C-P5-25-90-30~29735.dwg



NOTE: STANDARD DETAILS SHOWN
ACTUAL BUILDING MAY VARY



ROOF LAYOUT

PRELIMINARY: NOT FOR
CONSTRUCTION

Roof Layout

DRAWN BY:

MB

DATE:

11/26/2014

JOB NO.:

STANARD

REVISION:

BUILDING TYPE:

SX35M2C

PROJECT NAME:

SHEET
4.0

Engineering\AcadStandard\Blocks\Titles\ICONPRETIB
QE-73-01-42

ICON
Shelter Systems Inc
DISTINCTIVE STEEL SHELTERS
WWW.ICONSHELTERS.COM
COPYRIGHT 2004, ICON SHELTER
SYSTEMS, INC.
1455 LINCOLN AVE.
HOLLAND MI, 49423
616.396.0919
800.748.0985
616.396.0944 FX

DWG: \\Icon01\Company\Engineering\Standards\Shelters\SX\3551\M2C-P5-25-90-30\Drawings\Preliminary\SX35x51M2C-P5-25-90-30~29735.dwg