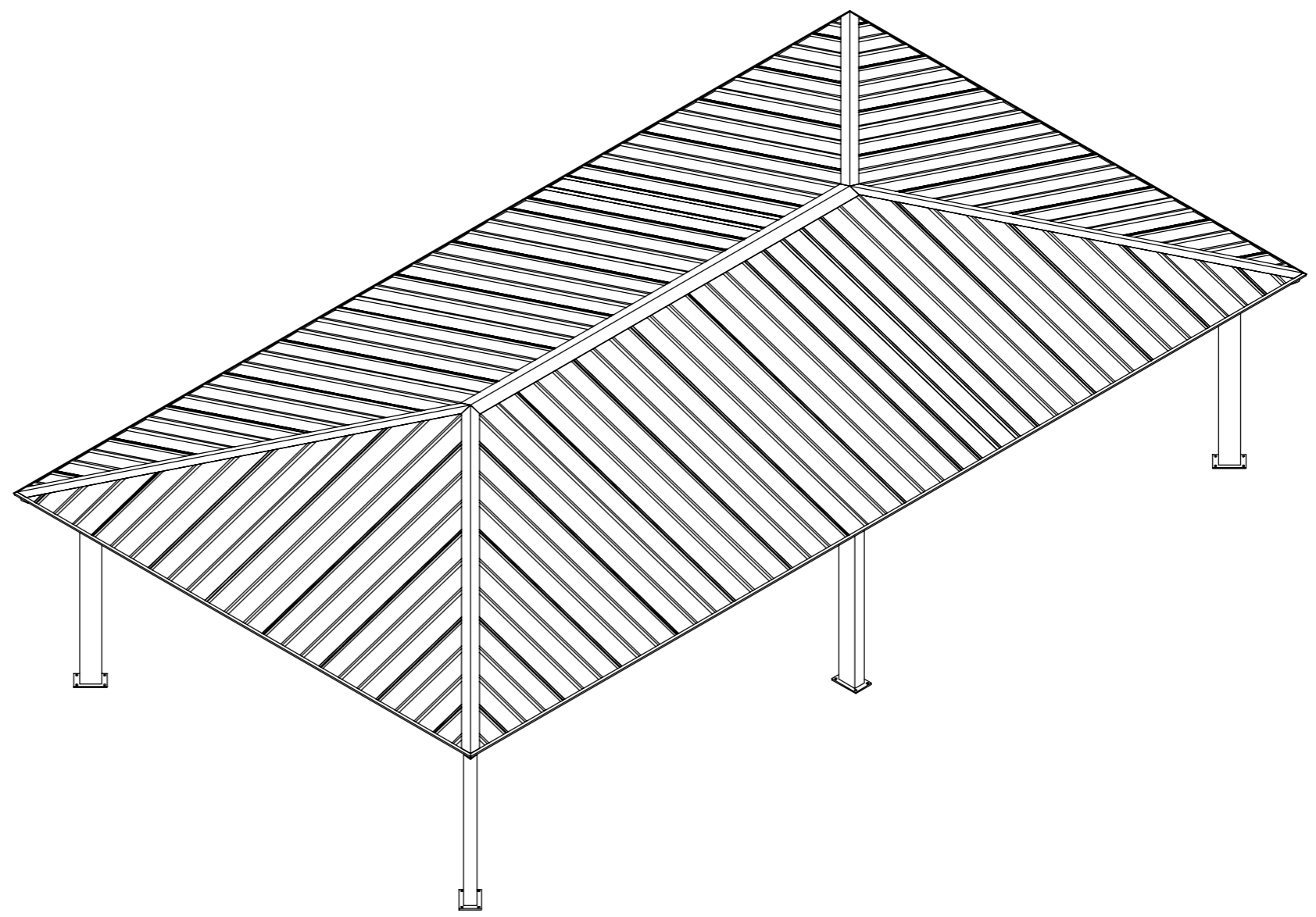


PRELIMINARY: NOT FOR CONSTRUCTION



ICON
 Shelter Systems Inc
 DISTINCTIVE STEEL SHELTERS
 WWW.ICONSHelters.COM
 COPYRIGHT 2004, ICON SHELTER SYSTEMS, INC.
 7900 LOGISTICS DR.
 SUITE C.
 ZEELAND MI, 49464
 616.748.0985
 800.748.0985
 616.748.0995 FX

Elevation

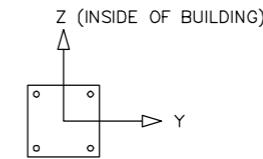
DRAWN BY:	ACP
DATE:	6/1/2018
JOB NO.:	52275
REVISION:	A
BUILDING TYPE:	RH24x44M-P4
PROJECT NAME:	

SHEET
 1.0

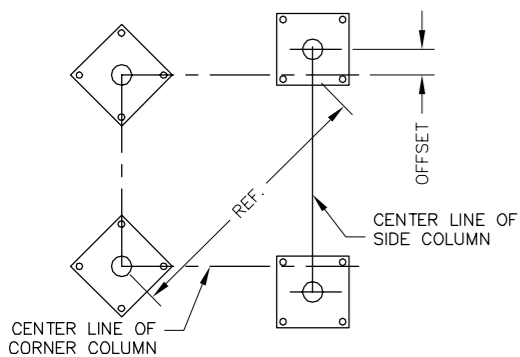
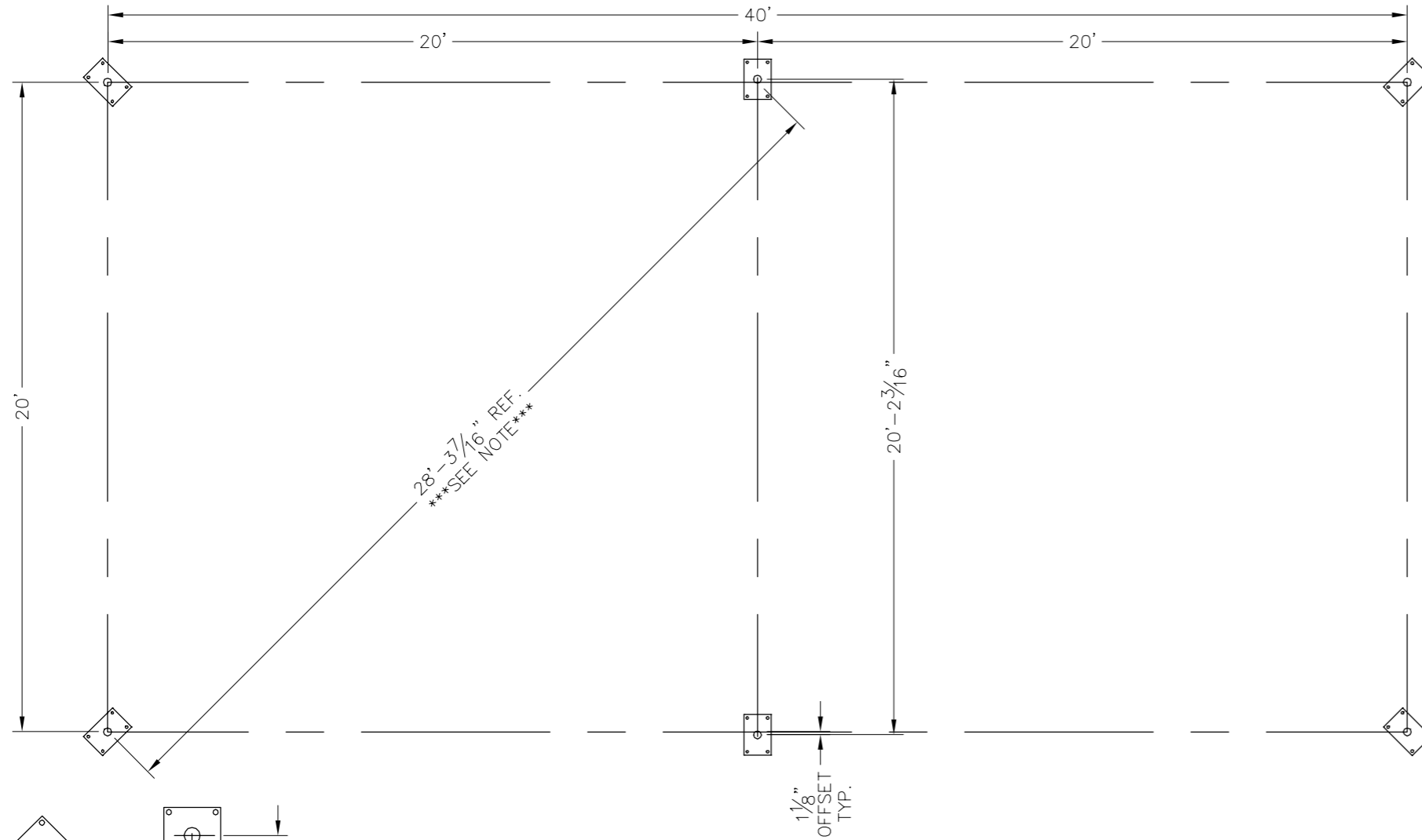
DWG:ing\Standards\Shelters\RH\24X44\M-P4-50-90-30\Drawings\Preliminary\RH24x44M-P4-50-90-30~52275.DWG

LOADS TO FOUNDATION (KIPS, IN-KIPS)	FOUNDATION LOADS				
	AXIAL (Fx)	SHEAR (Fy)	SHEAR (Fz)	MOMENT (My)	MOMENT (Mz)
DL	1.41	0.00	0.29	-11.77	-0.23
SL	7.63	-0.01	1.91	-75.96	-1.35
W-UPLIFT	-1.14	-0.01	-0.20	-1.69	4.03
W-FY	0.27	-0.54	-0.19	22.49	-26.33
W-FZ	-1.14	0.01	-0.20	-1.69	-4.03
E-FY	0.07	-0.15	0.23	-20.87	-11.05
E-Z	-0.08	0.13	-0.23	18.82	9.30

LOADS TO FOUNDATION (KIPS, IN-KIPS)	FOUNDATION LOADS				
	AXIAL (Fx)	SHEAR (Fy)	SHEAR (Fz)	MOMENT (My)	MOMENT (Mz)
DL	1.41	0.00	0.42	-22.18	0.00
SL	8.25	0.00	2.72	-143.27	0.00
W-UPLIFT	-2.04	0.00	0.06	-22.98	0.00
W-FY	-2.03	-0.21	-0.55	27.67	-13.63
W-FZ	0.11	0.00	0.80	-66.96	0.00
E-FY	0.00	-0.26	0.00	0.00	-17.76
E-Z	-0.08	0.00	-0.29	25.08	0.00



THESE FOUNDATION LOADS ARE FOR ESTIMATING PURPOSE ONLY.
THE ACTUAL LOADS WILL BE DETERMINED IN THE FINAL ENGINEERING



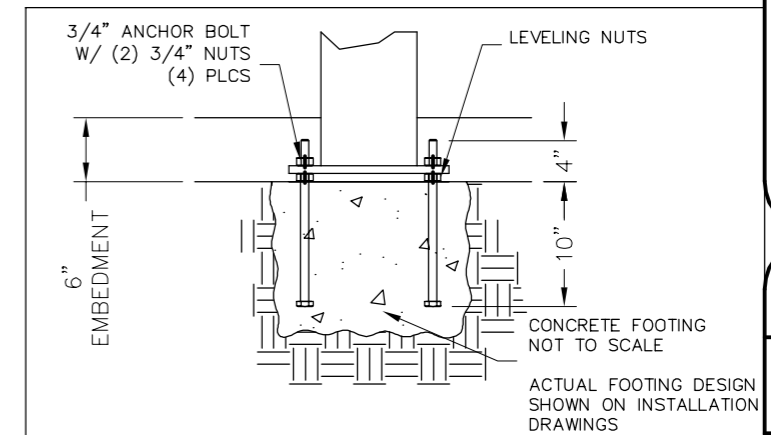
NOTE: SQUARENESS REFERENCE DIMENSION SHOWN ON THE ANCHOR BOLT LAYOUT IS MEASURED FROM THE CENTER OF THE CORNER COLUMN TO INTERSECTION OF THE OF THE SIDE & CORNER COLUMN CENTER LINES AS SHOWN ABOVE

NOTES:

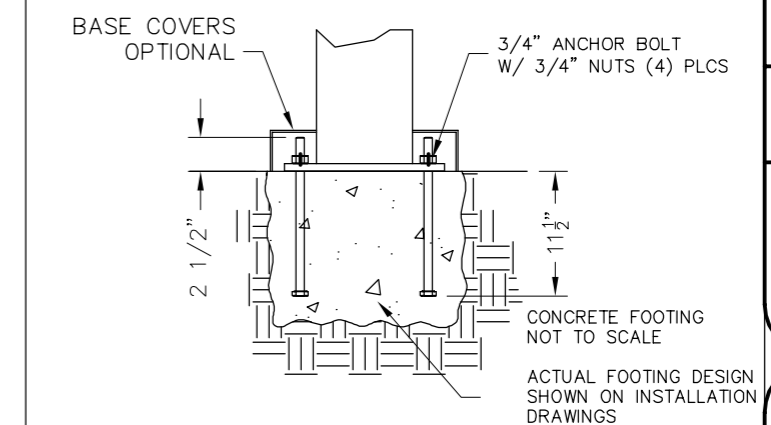
- TABLE SHOWS UNFACTORED SERVICE LOADS
- A FOUNDATION DESIGN HAS NOT BEEN PERFORMED BY ICON SHELTER SYSTEMS INC.
- A LICENSED ENGINEER FAMILIAR WITH SOIL CONDITIONS AT CONSTRUCTION SITE MUST PERFORM A FOUNDATION DESIGN.
- THE STRUCTURE HAS BEEN ENGINEERED AS AN OPEN STRUCTURE.
- CONSULT ICON SHELTER SYSTEMS INC. IF THE STRUCTURE IS TO BE ENCLOSED.
- COORDINATES ARE LOCAL TO THE COLUMN

DEFINITIONS:

- DL = SERVICE LEVEL DEAD LOAD REACTION WITH THE GREATEST AXIAL LOAD
- SL = SERVICE LEVEL SNOW LOAD REACTION WITH THE GREATEST AXIAL LOAD
- W-UL = SERVICE LEVEL WIND LOAD REACTION WITH THE GREATEST UPLIFT LOAD
- W-Y = SERVICE LEVEL WIND LOAD REACTION WITH THE GREATEST MAGNITUDE OF SHEAR IN THE LOCAL Y DIRECTION
- W-Z = SERVICE LEVEL WIND LOAD REACTION WITH THE GREATEST SHEAR VALUE ACTING IN THE SAME DIRECTION AS THE DL SHEAR LOAD
- E-Y = SERVICE LEVEL SEISMIC LOAD REACTION WITH THE GREATEST MAGNITUDE OF SHEAR IN THE LOCAL Y DIRECTION
- E-Z = SERVICE LEVEL SEISMIC LOAD REACTION WITH THE GREATEST MAGNITUDE OF SHEAR IN THE LOCAL Z DIRECTION



PRELIMINARY DRAWINGS SHOWN AS 6" BURIED
STANDARD BASE CONNECTION
COLUMN TYPE: A (6" BURIED)



OPTIONAL BASE CONNECTION
COLUMN TYPE: B (SURFACE MOUNT W/ COVERS)

PRELIMINARY: NOT FOR CONSTRUCTION

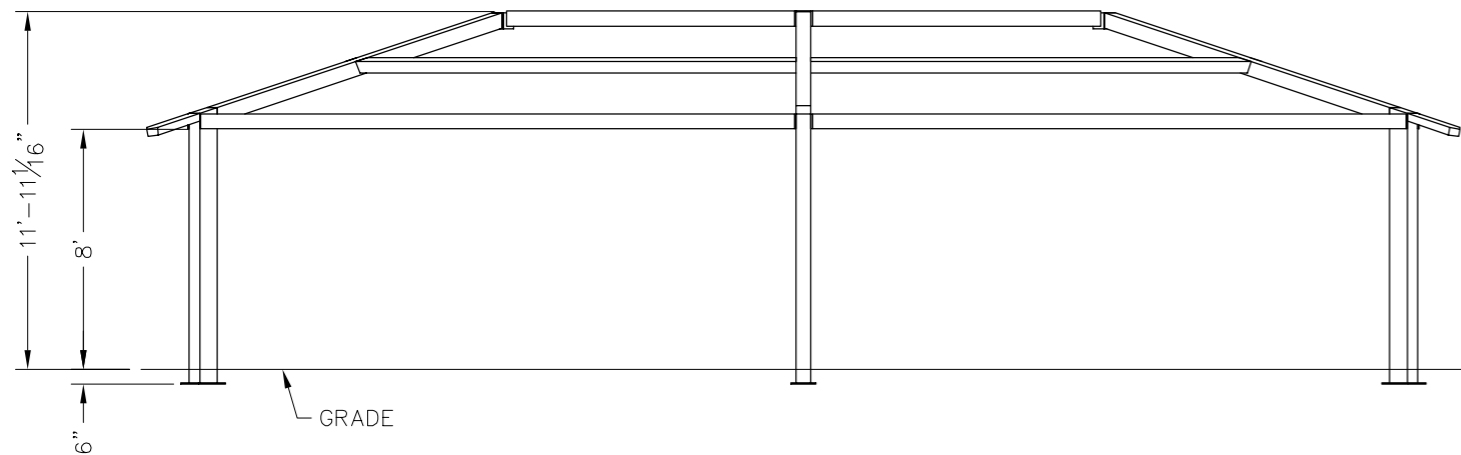
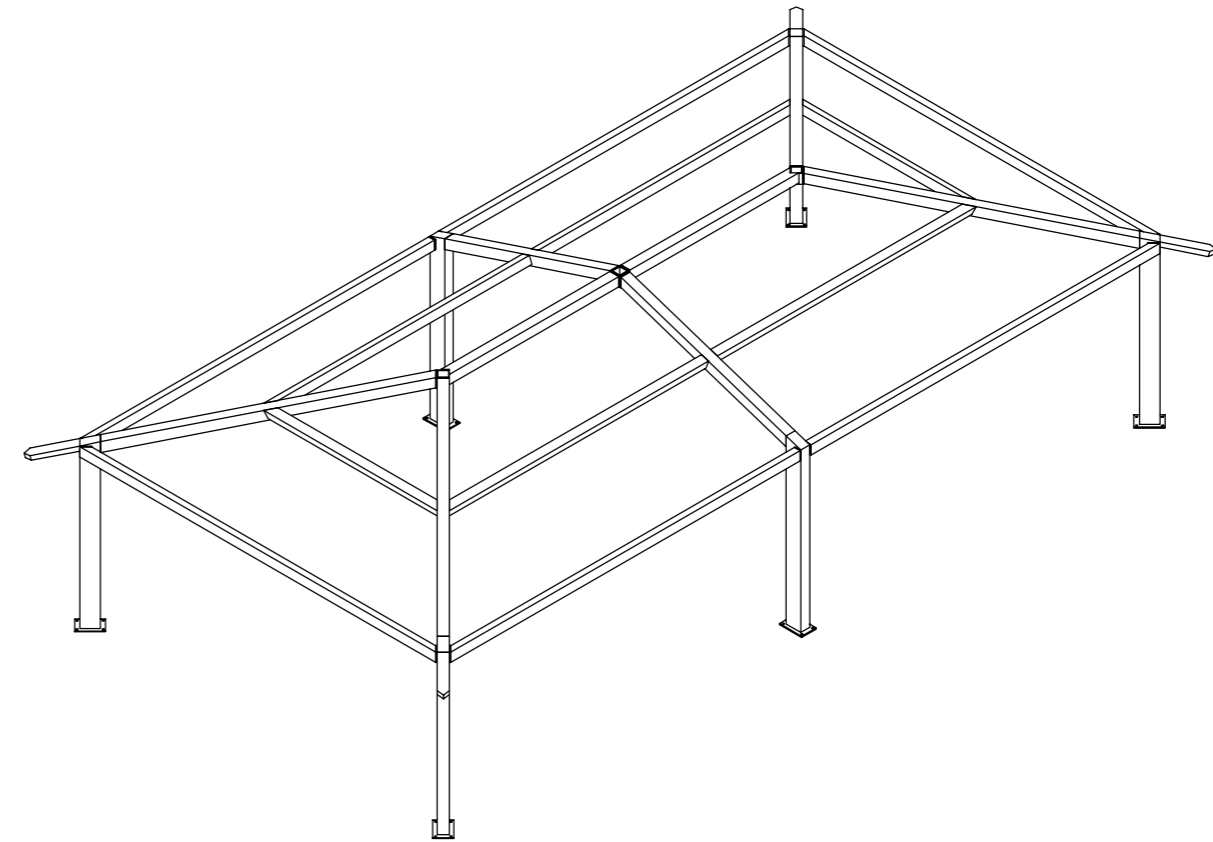
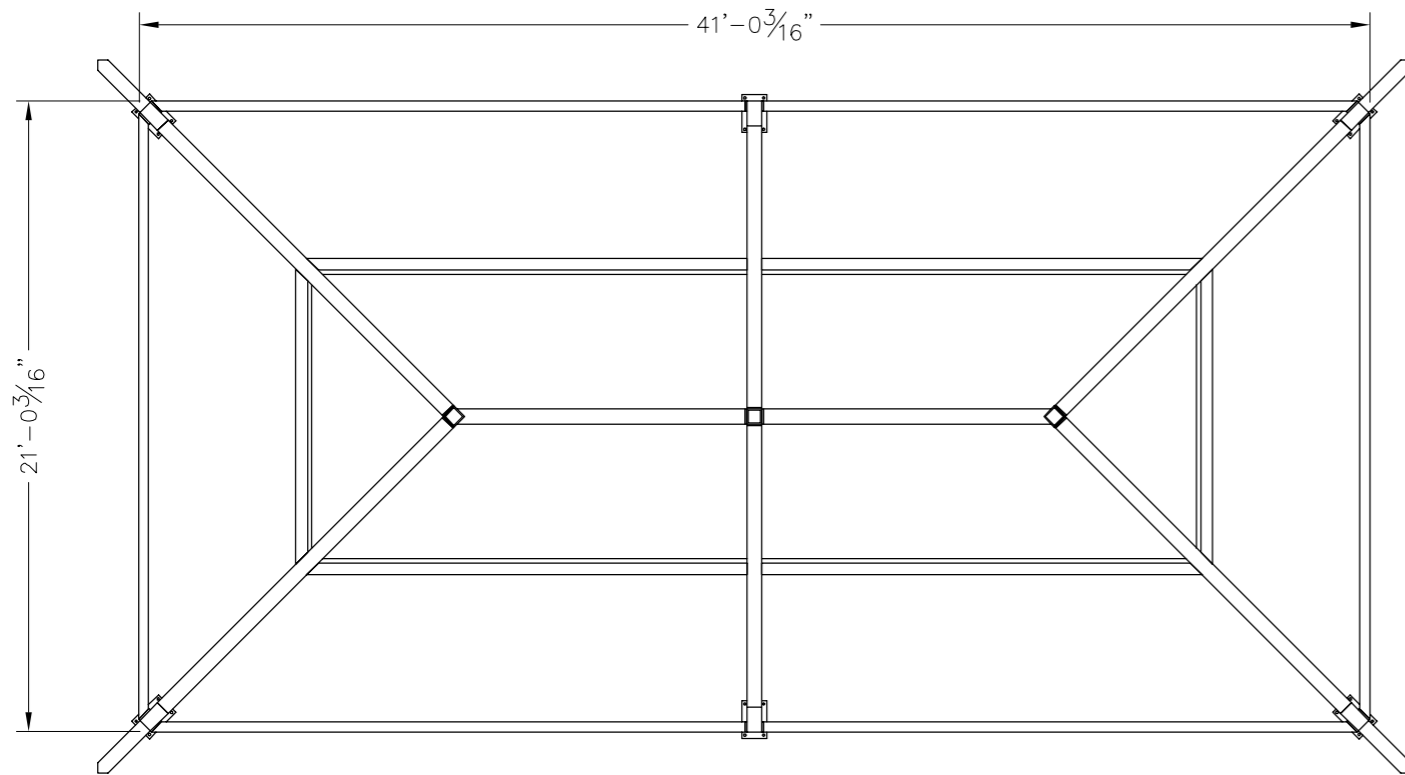
ICON
Shelter Systems Inc
DISTINCTIVE STEEL SHELTERS
WWW.ICONSHelters.COM
COPYRIGHT 2004, ICON SHELTER SYSTEMS, INC.
7900 LOGISTICS DR.
SUITE C.
ZEELAND MI, 49464
616.748.0985
800.748.0985
616.748.0995 FX

Anchor Bolt Layout

DRAWN BY:	ACP
DATE:	6/1/2018
JOB NO.:	52275
REVISION:	A
BUILDING TYPE:	RH24x44M-P4
PROJECT NAME:	

SHEET
2.0

DWG:ing\Standards\Shelters\RH\24x44\M-P4-50-90-30\Drawings\Preliminary\RH24x44M-P4-50-90-30~52275.DWG



PRELIMINARY: NOT FOR
CONSTRUCTION

ICON
Shelter Systems Inc
DISTINCTIVE STEEL SHELTERS
WWW.ICONSHelters.COM
COPYRIGHT 2004, ICON SHELTER
SYSTEMS, INC.
7900 LOGISTICS DR.
SUITE C.
ZEELAND MI, 49464
616.748.0985
800.748.0985
616.748.0995 FX

Frame

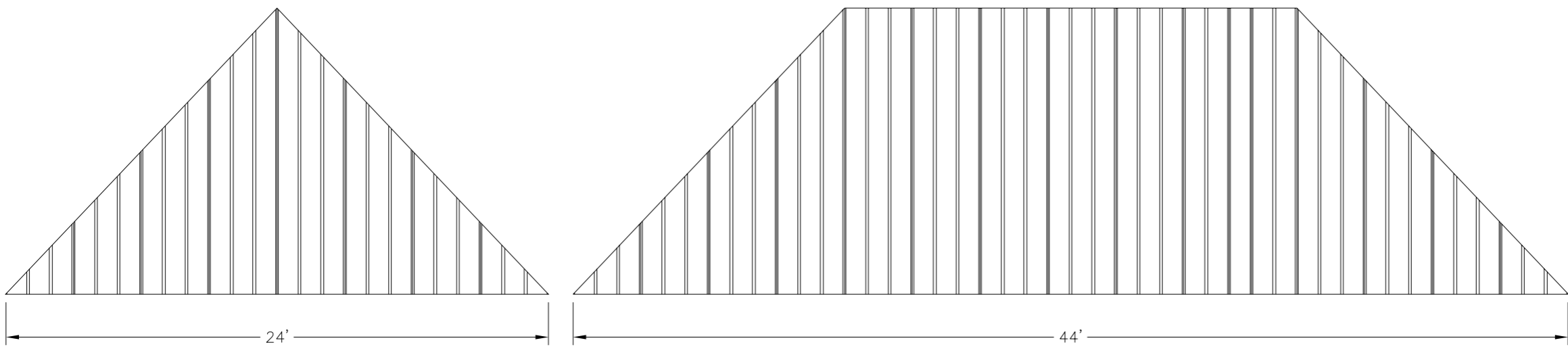
DRAWN BY:	ACP
DATE:	6/1/2018
JOB NO.:	52275
REVISION:	A
BUILDING TYPE:	RH24x44M-P4
PROJECT NAME:	

ALL STRUCTURAL COMPONENTS WILL BE:
TUBE: ASTM A500 GRADE B
PLATE: ASTM A36
BOLTS: ASTM A325
NUTS: ASTM A563
WELDING: GMAW

NOTE:
COLUMN SIZE: HSS 10x6x3/16

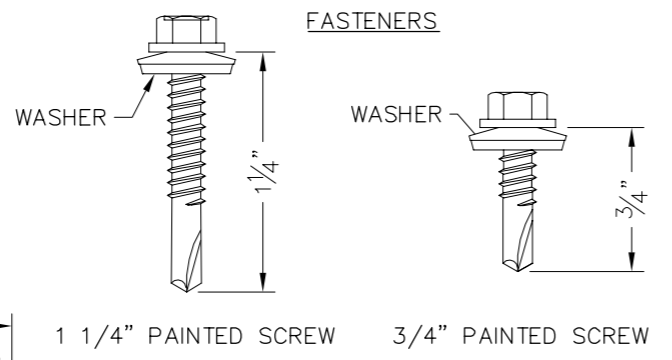
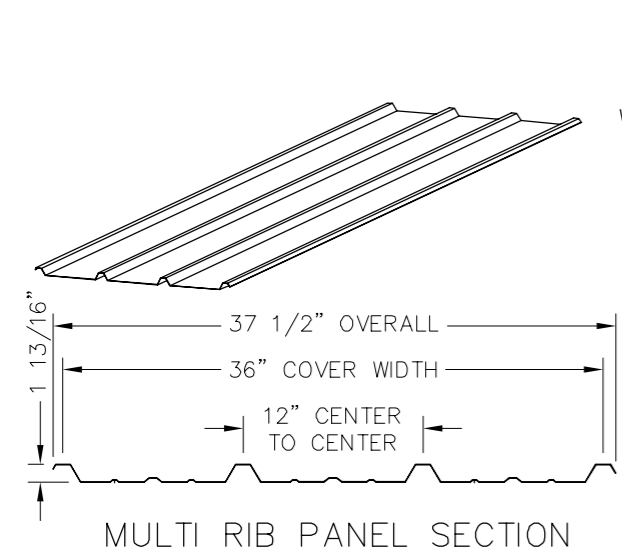
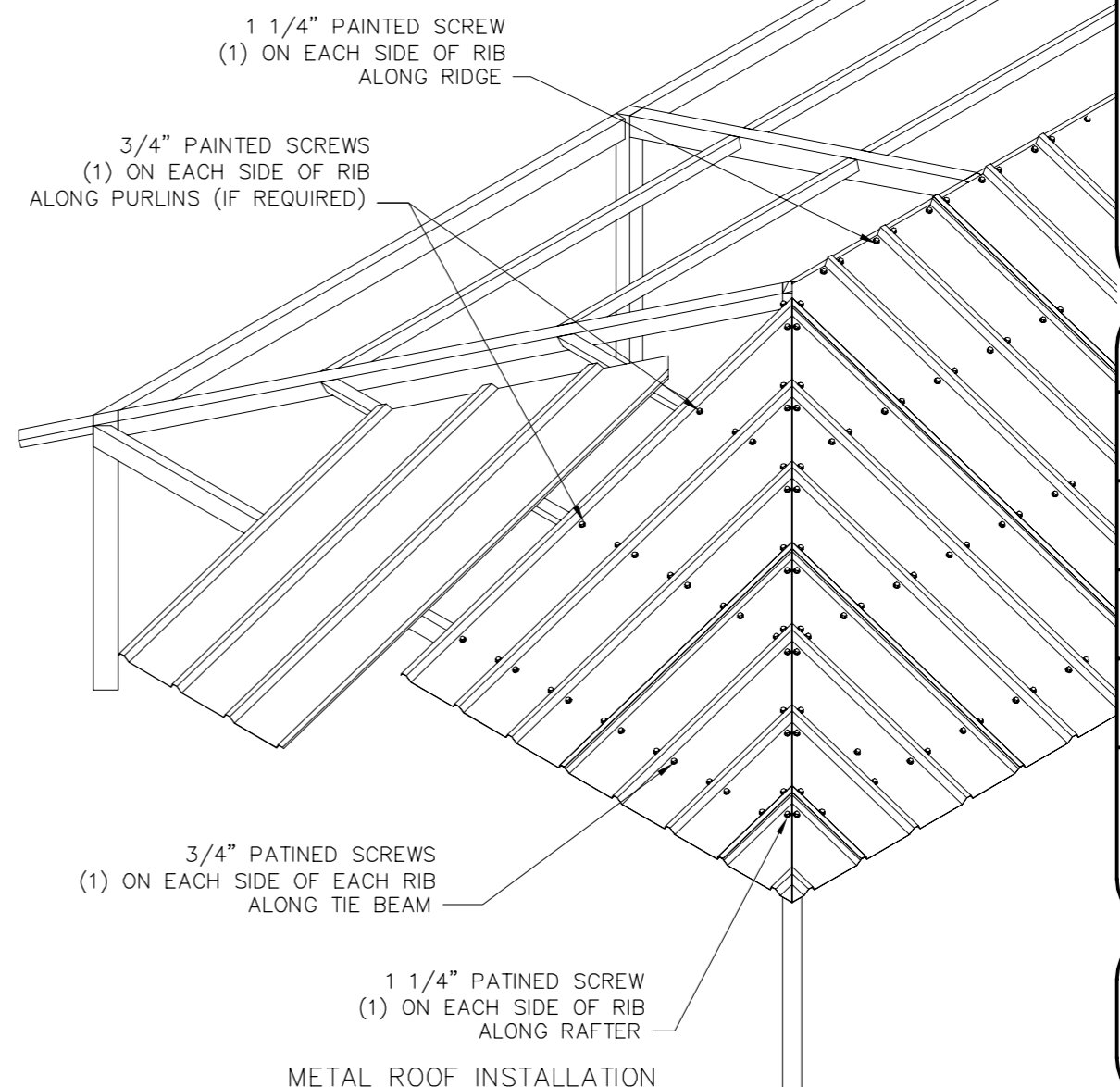
SHEET
3.0

DWG:ing\Standards\Shelters\RH\24X44\M-P4-50-90-30\Drawings\Preliminary\RH24x44M-P4-50-90-30~52275.DWG



Roof Layout

PRELIMINARY: NOT FOR CONSTRUCTION



NOTE: STANDARD DETAILS SHOWN
 ACTUAL BUILDING MAY VARY

DRAWN BY:	ACP
DATE:	6/1/2018
JOB NO.:	52275
REVISION:	A
BUILDING TYPE:	RH24x44M-P4
PROJECT NAME:	

DWG:ing\Standards\Shelters\RH\24X44\M-P4-50-90-30\Drawings\Preliminary\RH24x44M-P4-50-90-30~52275.DWG