

PRELIMINARY: NOT FOR CONSTRUCTION

**ICON**  
 Shelter Systems Inc  
 DISTINCTIVE STEEL SHELTERS  
 WWW.ICONSHelters.COM  
 COPYRIGHT 2004, ICON SHELTER SYSTEMS, INC.  
 1455 LINCOLN AVE.  
 HOLLAND MI, 49423  
 616.396.0919  
 800.748.0985  
 616.396.0944 FX

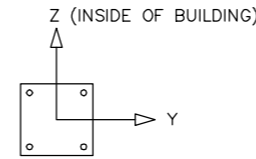
Elevation

DRAWN BY:	ACP
DATE:	1/13/2016
JOB NO.:	STANDARD
REVISION:	
BUILDING TYPE:	OC26-TA2C-P6
PROJECT NAME:	

SHEET  
 1.0

DWG: \Company\Engineering\Standards\Shelters\OC\26\TA2C-P6-20-90-60\Drawings\Preliminary\OC26TA2C-P6-20-90-60~41427.DWG

PRELIMINARY: NOT FOR CONSTRUCTION

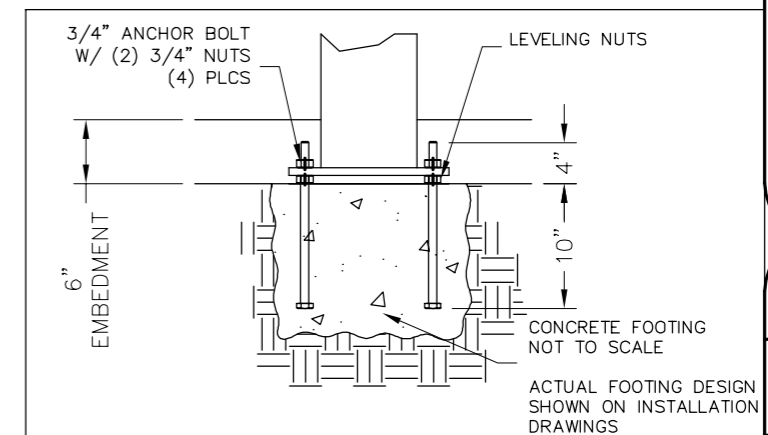


LOADS TO FOUNDATION (KIPS, IN-KIPS)	FOUNDATION LOADS				
	AXIAL (Fx)	SHEAR (Fy)	SHEAR (Fz)	MOMENT (My)	MOMENT (Mz)
DL	0.78	0.00	0.04	-1.55	0.00
SL	1.43	0.00	0.08	-3.15	0.00
W-UPLIFT	-0.77	0.18	-0.09	5.50	11.76
W-FY	-0.77	-0.18	-0.09	5.48	-11.76
W-FZ	-0.70	-0.07	-0.18	11.87	-5.07
E-FY	-0.04	-0.15	-0.05	3.61	-9.84
E-Z	-0.12	-0.06	-0.12	8.70	-4.07

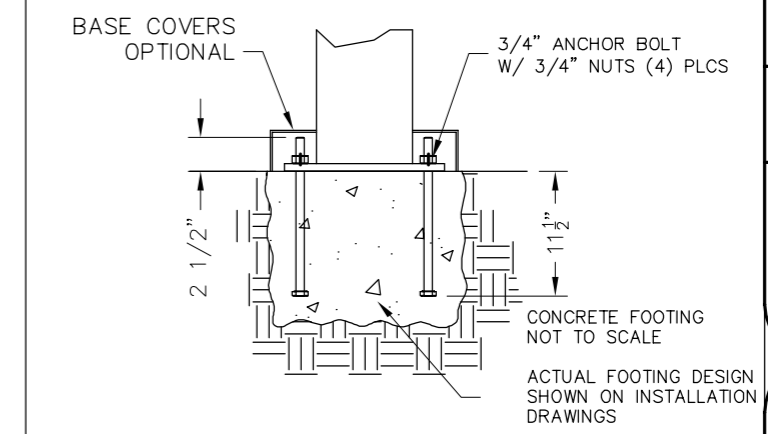
THESE FOUNDATION LOADS ARE FOR ESTIMATING PURPOSE ONLY.  
THE ACTUAL LOADS WILL BE DETERMINED IN THE FINAL ENGINEERING

- NOTES:**
- TABLE SHOWS UNFACTORED SERVICE LOADS
  - A FOUNDATION DESIGN HAS NOT BEEN PERFORMED BY ICON SHELTER SYSTEMS INC.
  - A LICENSED ENGINEER FAMILIAR WITH SOIL CONDITIONS AT CONSTRUCTION SITE MUST PERFORM A FOUNDATION DESIGN.
  - THE STRUCTURE HAS BEEN ENGINEERED AS AN OPEN STRUCTURE.
  - CONSULT ICON SHELTER SYSTEMS INC. IF THE STRUCTURE IS TO BE ENCLOSED.
  - COORDINATES ARE LOCAL TO THE COLUMN

- DEFINITIONS:**
- DL = SERVICE LEVEL DEAD LOAD REACTION WITH THE GREATEST AXIAL LOAD
  - SL = SERVICE LEVEL SNOW LOAD REACTION WITH THE GREATEST AXIAL LOAD
  - W-UL = SERVICE LEVEL WIND LOAD REACTION WITH THE GREATEST UPLIFT LOAD
  - W-Y = SERVICE LEVEL WIND LOAD REACTION WITH THE GREATEST MAGNITUDE OF SHEAR IN THE LOCAL Y DIRECTION
  - W-Z = SERVICE LEVEL WIND LOAD REACTION WITH THE GREATEST SHEAR VALUE ACTING IN THE SAME DIRECTION AS THE DL SHEAR LOAD
  - E-Y = SERVICE LEVEL SEISMIC LOAD REACTION WITH THE GREATEST MAGNITUDE OF SHEAR IN THE LOCAL Y DIRECTION
  - E-Z = SERVICE LEVEL SEISMIC LOAD REACTION WITH THE GREATEST MAGNITUDE OF SHEAR IN THE LOCAL Z DIRECTION



PRELIMINARY DRAWINGS SHOWN AS 6" BURIED  
STANDARD BASE CONNECTION  
COLUMN TYPE: A (6" BURIED)



OPTIONAL BASE CONNECTION  
COLUMN TYPE: B (SURFACE MOUNT W/ COVERS)

**ICON**  
Shelter Systems Inc  
DISTINCTIVE STEEL SHELTERS  
WWW.ICONSHELTERS.COM  
COPYRIGHT 2004, ICON SHELTER SYSTEMS, INC.  
1455 LINCOLN AVE.  
HOLLAND MI, 49423  
616.396.0919  
800.748.0985  
616.396.0944 FX

Anchor Bolt Layout

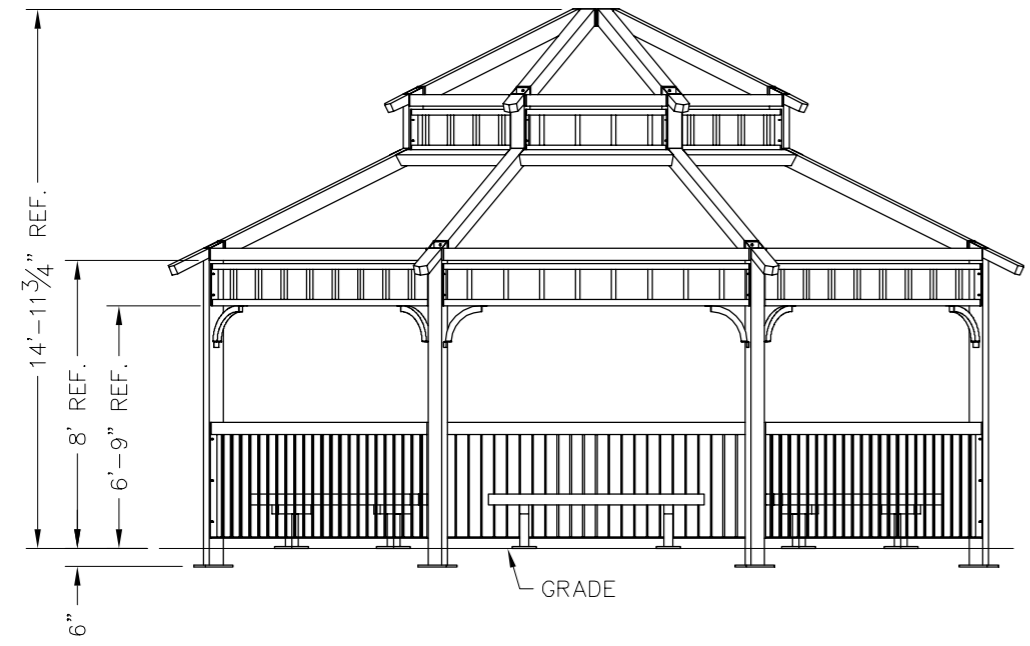
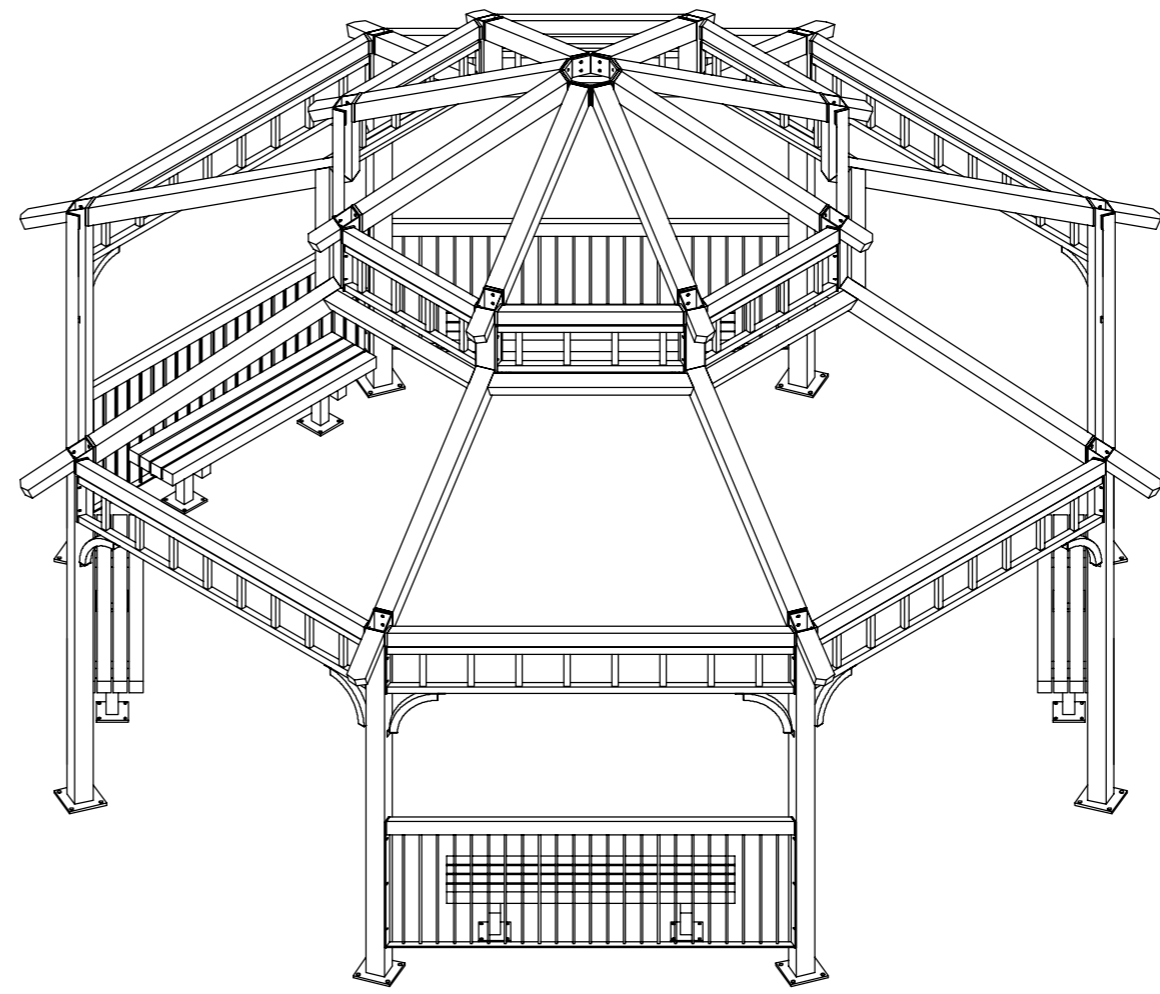
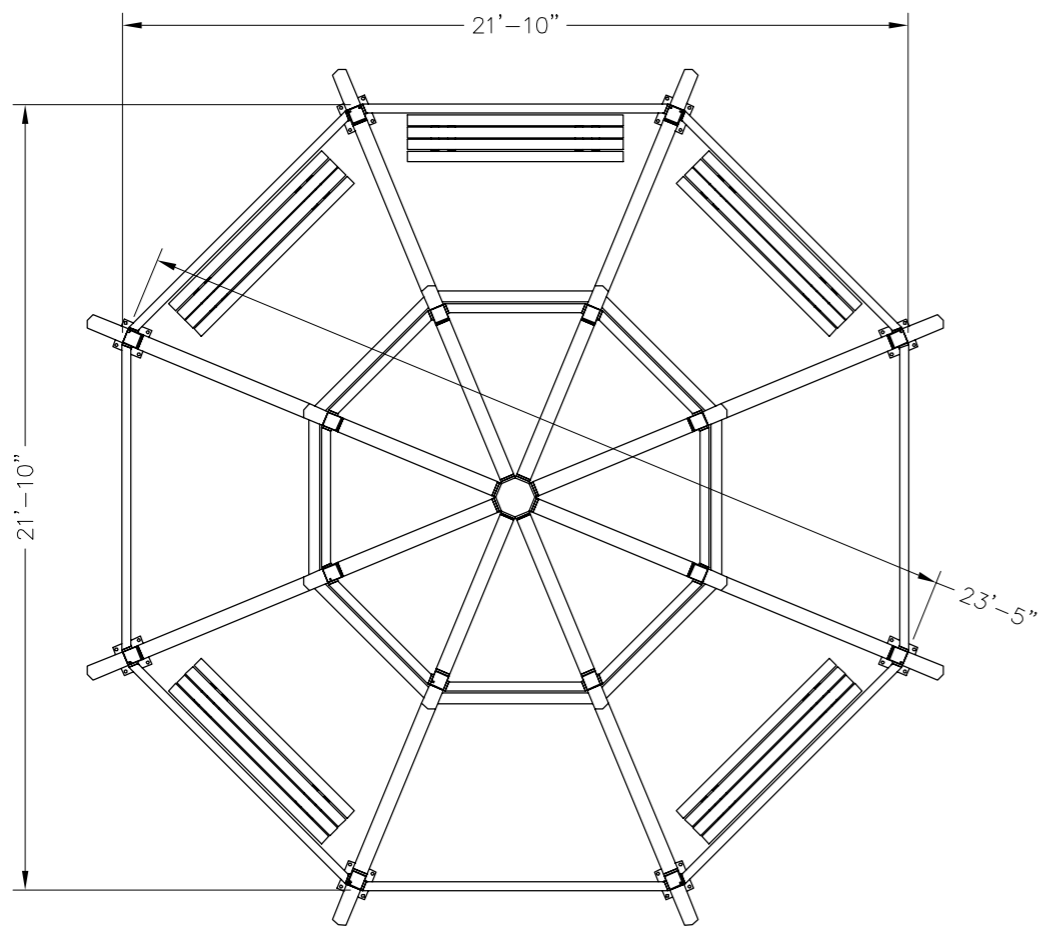
DRAWN BY:	ACP
DATE:	1/13/2016
JOB NO.:	STANDARD
REVISION:	
BUILDING TYPE:	OC26-TA2C-P6
PROJECT NAME:	

SHEET  
2.0

DWG: \Company\Engineering\Standards\Shelters\OC\26\TA2C-P6-20-90-60\Drawings\Preliminary\OC26TA2C-P6-20-90-60~41427.DWG

PRELIMINARY: NOT FOR CONSTRUCTION

**ICON**  
 Shelter Systems Inc  
 DISTINCTIVE STEEL SHELTERS  
 WWW.ICONSHelters.COM  
 COPYRIGHT 2004, ICON SHELTER SYSTEMS, INC.  
 1455 LINCOLN AVE.  
 HOLLAND MI, 49423  
 616.396.0919  
 800.748.0985  
 616.396.0944 FX



Frame

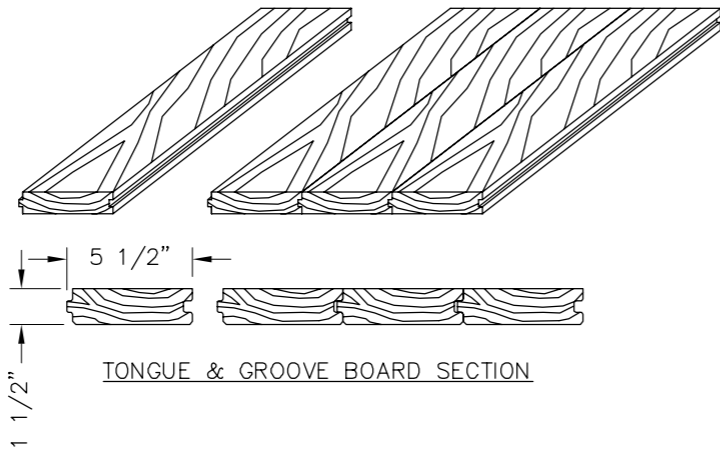
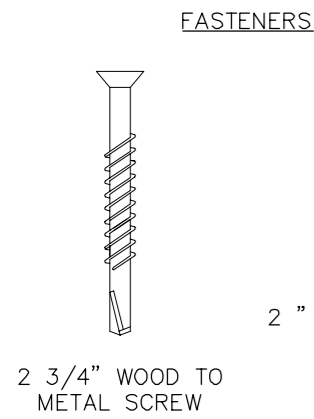
DRAWN BY:	ACP
DATE:	1/13/2016
JOB NO.:	STANDARD
REVISION:	
BUILDING TYPE:	OC26-TA2C-P6
PROJECT NAME:	

ALL STRUCTURAL COMPONENTS WILL BE:  
 TUBE: ASTM A500 GRADE B  
 PLATE: ASTM A36  
 BOLTS: ASTM A325  
 NUTS: ASTM A563  
 WELDING: GMAW

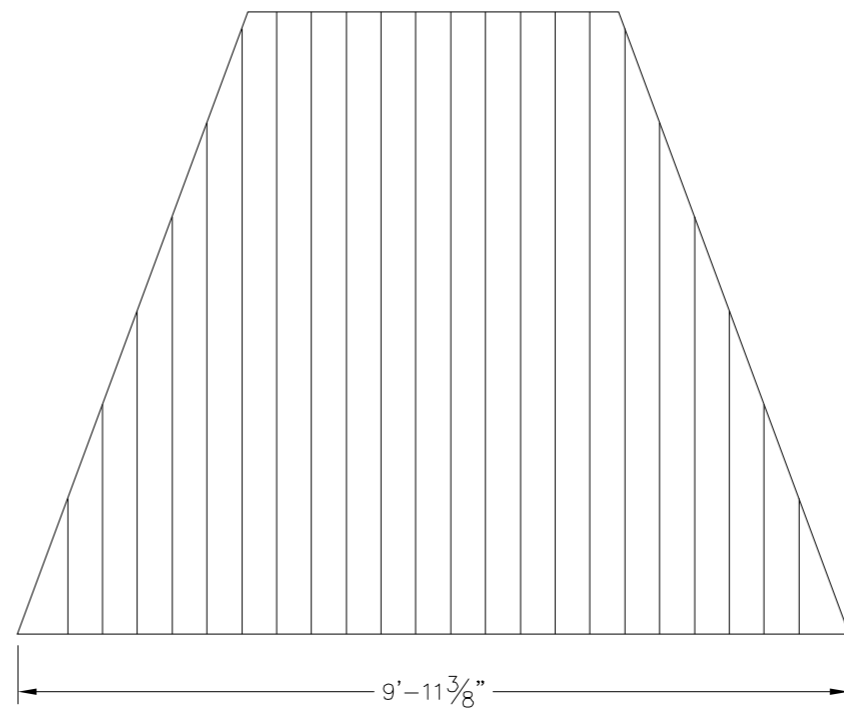
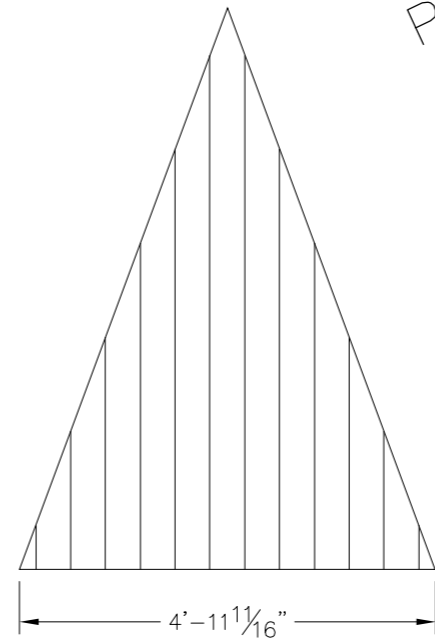
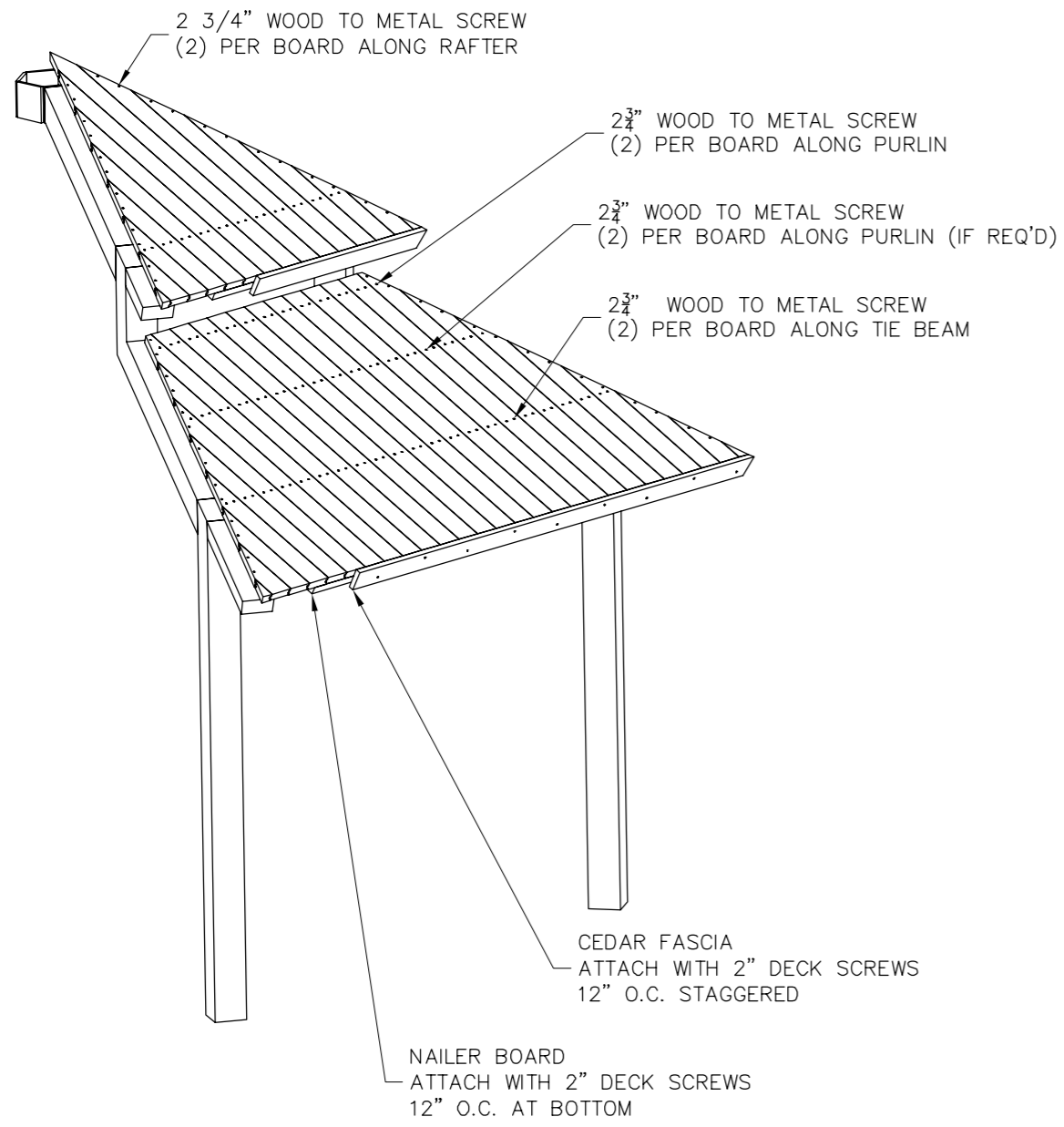
NOTE:  
 COLUMN SIZE: HSS 5x5x3/16

SHEET  
 3.0

DWG: \Company\Engineering\Standards\Shelters\OC\26\TA2C-P6-20-90-60\Drawings\Preliminary\OC26TA2C-P6-20-90-60~41427.DWG



NOTE: STANDARD DETAILS SHOWN  
ACTUAL BUILDING MAY VARY



PRELIMINARY: NOT FOR  
CONSTRUCTION

**ICON**  
Shelter Systems Inc  
DISTINCTIVE STEEL SHELTERS  
WWW.ICONSHELTERS.COM  
COPYRIGHT 2004, ICON SHELTER  
SYSTEMS, INC.  
1455 LINCOLN AVE.  
HOLLAND MI, 49423  
616.396.0919  
800.748.0985  
616.396.0944 FX

Roof Layout

DRAWN BY:	ACP
DATE:	1/13/2016
JOB NO.:	STANDARD
REVISION:	
BUILDING TYPE:	OC26-TA2C-P6
PROJECT NAME:	

DWG: \Company\Engineering\Standards\Shelters\OC\26\TA2C-P6-20-90-60\Drawings\Preliminary\OC26TA2C-P6-20-90-60~41427.DWG