

PRELIMINARY: NOT FOR  
CONSTRUCTION

**ICON**  
Shelter Systems Inc  
DISTINCTIVE STEEL SHELTERS  
WWW.ICONSHelters.COM  
COPYRIGHT 2004, ICON SHELTER  
SYSTEMS, INC.  
1455 LINCOLN AVE.  
HOLLAND MI, 49423  
616.396.0919  
800.748.0985  
616.396.0944 FX

Elevation

DRAWN BY:

ACP

DATE:

4/3/2019

PRELIMINARY ID:

58717

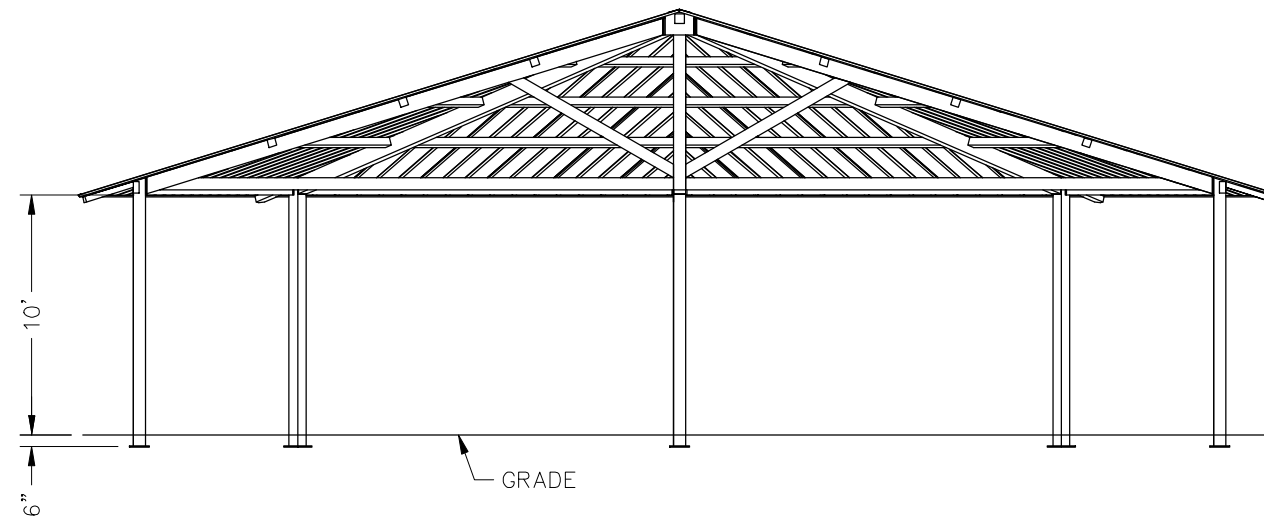
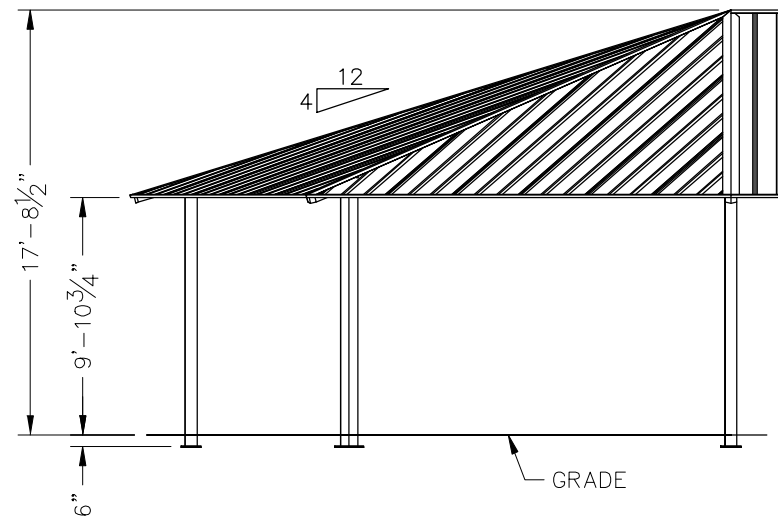
REVISION:

A

BUILDING TYPE:

B050-10M-P4

PROJECT NAME:

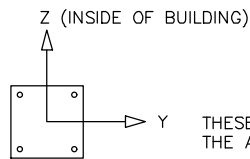


SHEET

1.0

DWG:engineering\Standards\Shelters\B0\50\M-P4-25-120-40\Drawings\Preliminary\B050-10M-P4-25-120-40~58717.DWG

Engineering\AcadStand\Blocks\Titles\ICONPRETIT  
QF-73-01-42

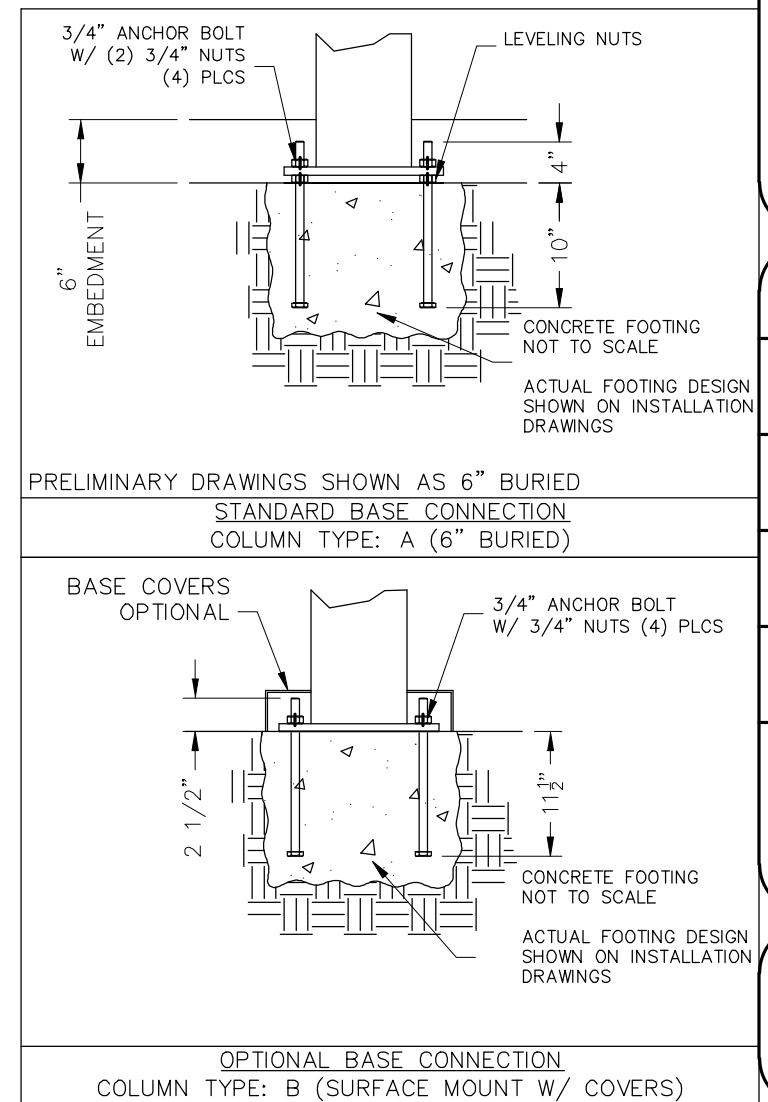
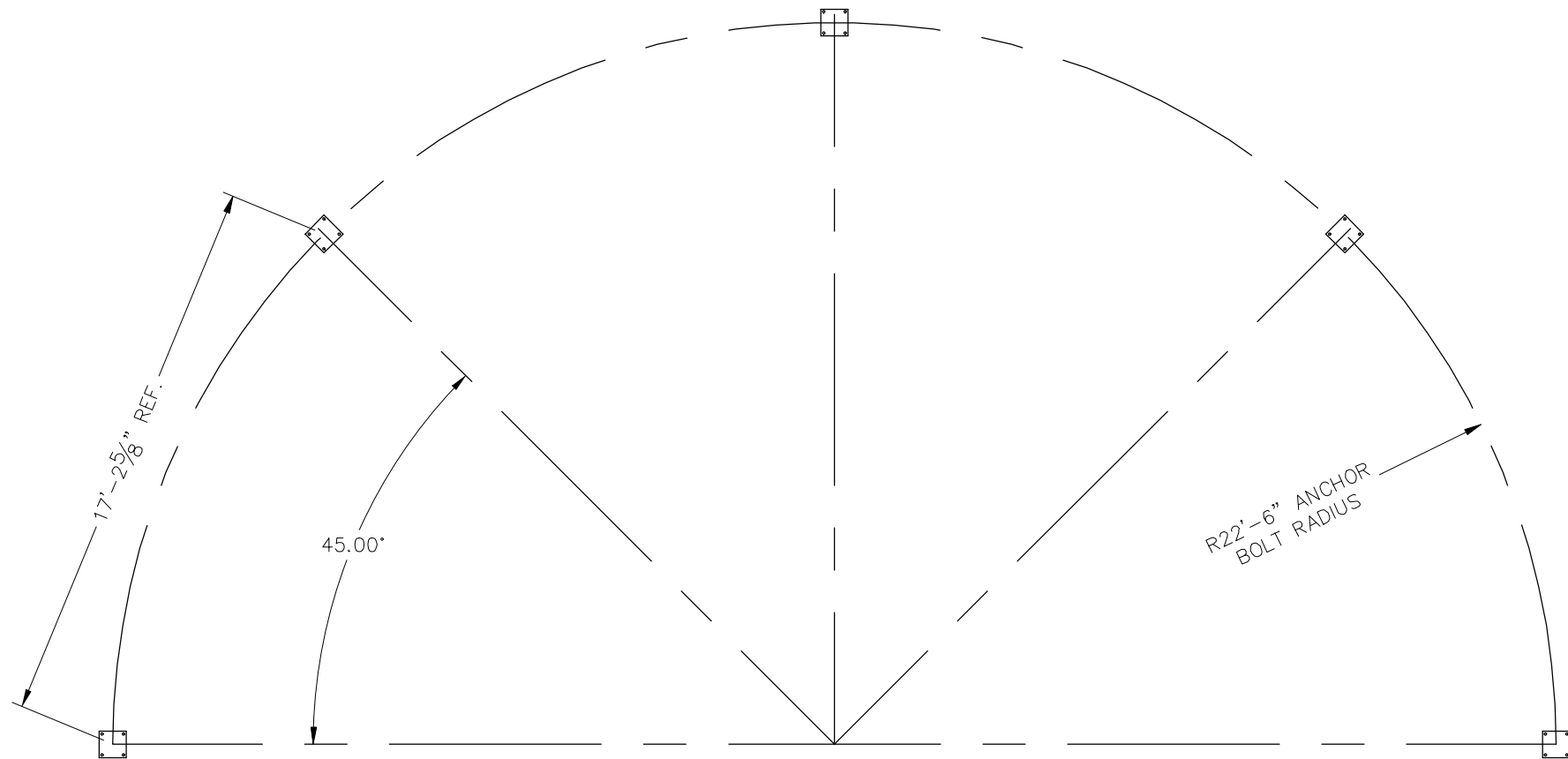


THESE FOUNDATION LOADS ARE FOR ESTIMATING PURPOSE ONLY.  
THE ACTUAL LOADS WILL BE DETERMINED IN THE FINAL ENGINEERING

| LOADS TO FOUNDATION<br>(KIPS, IN-KIPS) | FOUNDATION LOADS |            |            |             |             |
|--|------------------|------------|------------|-------------|-------------|
|  | AXIAL (Fx)       | SHEAR (Fy) | SHEAR (Fz) | MOMENT (My) | MOMENT (Mz) |
| DL                                     | 2.63             | 0.17       | 0.25       | -12.60      | 11.45       |
| SL                                     | 5.43             | 0.58       | 0.51       | -25.52      | 38.54       |
| W-UPLIFT                               | -4.27            | -0.11      | -1.91      | 138.60      | 2.21        |
| W-FY                                   | -2.68            | 1.67       | -0.42      | 29.40       | 132.30      |
| W-FZ                                   | -3.86            | 0.25       | -2.19      | 165.90      | 18.90       |
| E-FY                                   | 0.12             | -0.13      | 0.02       | -0.89       | -10.06      |
| E-Z                                    | -0.06            | 0.00       | -0.17      | 13.13       | -0.03       |

- NOTES:
- TABLE SHOWS UNFACTORED SERVICE LOADS
  - A FOUNDATION DESIGN HAS NOT BEEN PERFORMED BY ICON SHELTER SYSTEMS INC.
  - A LICENSED ENGINEER FAMILIAR WITH SOIL CONDITIONS AT CONSTRUCTION SITE MUST PERFORM A FOUNDATION DESIGN.
  - THE STRUCTURE HAS BEEN ENGINEERED AS AN OPEN STRUCTURE.
  - CONSULT ICON SHELTER SYSTEMS INC. IF THE STRUCTURE IS TO BE ENCLOSED.
  - COORDINATES ARE LOCAL TO THE COLUMN

- DEFINITIONS:
- DL = SERVICE LEVEL DEAD LOAD REACTION WITH THE GREATEST AXIAL LOAD
  - SL = SERVICE LEVEL SNOW LOAD REACTION WITH THE GREATEST AXIAL LOAD
  - W-UL = SERVICE LEVEL WIND LOAD REACTION WITH THE GREATEST UPLIFT LOAD
  - W-Y = SERVICE LEVEL WIND LOAD REACTION WITH THE GREATEST MAGNITUDE OF SHEAR IN THE LOCAL Y DIRECTION
  - W-Z = SERVICE LEVEL WIND LOAD REACTION WITH THE GREATEST SHEAR VALUE ACTING IN THE SAME DIRECTION AS THE DL SHEAR LOAD
  - E-Y = SERVICE LEVEL SEISMIC LOAD REACTION WITH THE GREATEST MAGNITUDE OF SHEAR IN THE LOCAL Y DIRECTION
  - E-Z = SERVICE LEVEL SEISMIC LOAD REACTION WITH THE GREATEST MAGNITUDE OF SHEAR IN THE LOCAL Z DIRECTION



PRELIMINARY: NOT FOR CONSTRUCTION

**ICON**  
Shelter Systems Inc  
DISTINCTIVE STEEL SHELTERS  
WWW.ICONSHelters.COM  
COPYRIGHT 2004, ICON SHELTER SYSTEMS, INC.  
1455 LINCOLN AVE.  
HOLLAND MI, 49423  
616.396.0919  
800.748.0985  
616.396.0944 FX

Anchor Bolt Layout

DRAWN BY:  
ACP

DATE:  
4/3/2019

PRELIMINARY ID:  
58717

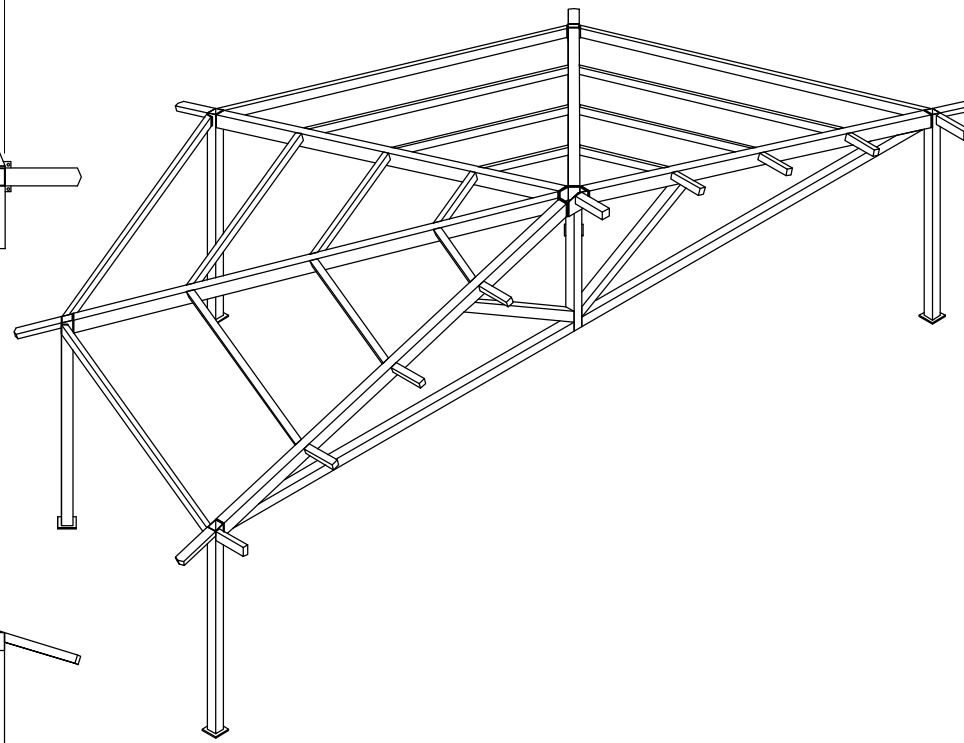
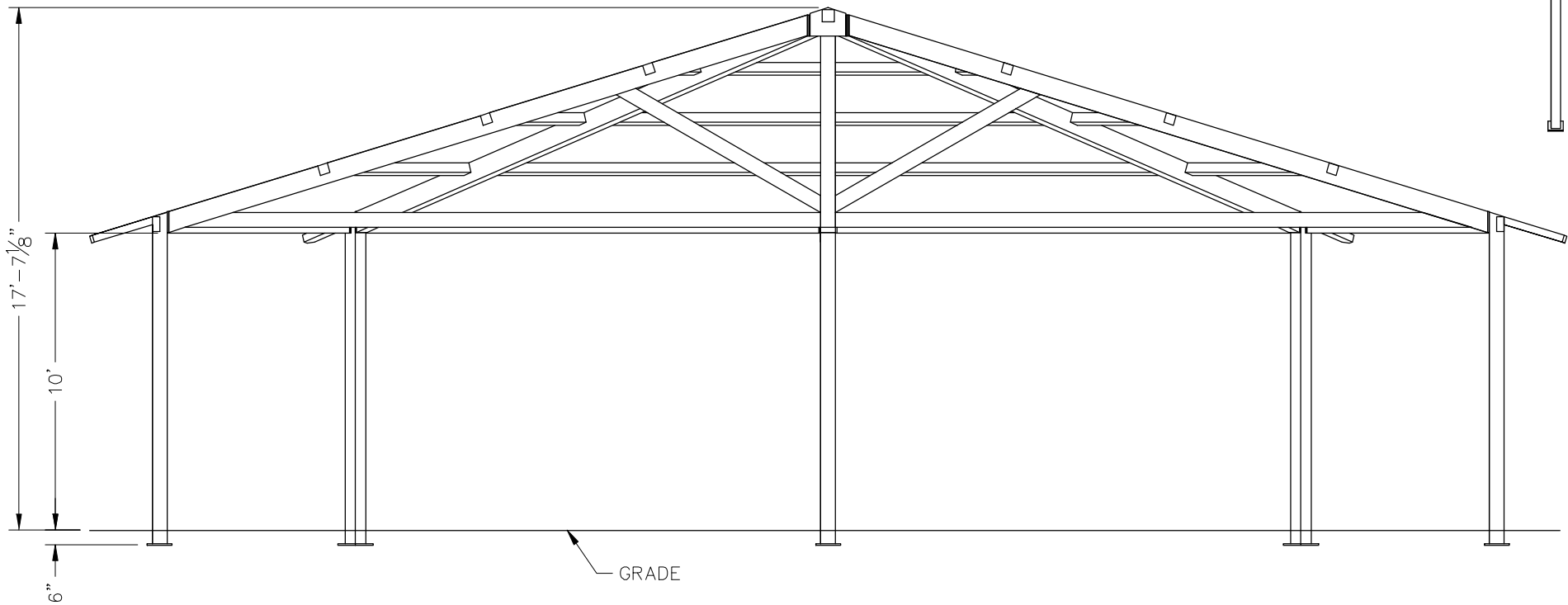
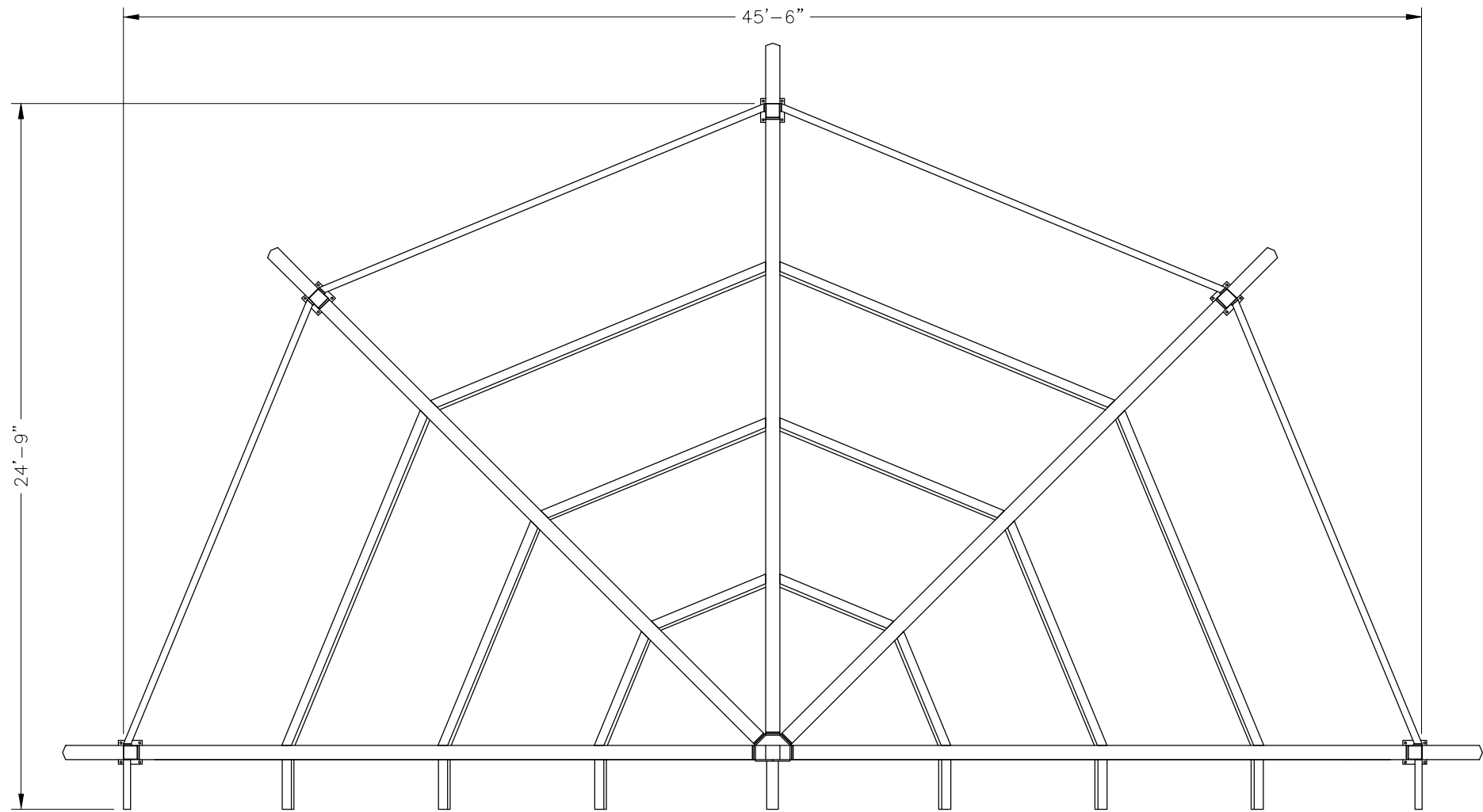
REVISION:  
A

BUILDING TYPE:  
B050-10M-P4

PROJECT NAME:

SHEET  
**2.0**

DWG:engineering\Standards\Shelters\B0\50\M-P4-25-120-40\Drawings\Preliminary\B050-10M-P4-25-120-40~58717.DWG



ALL STRUCTURAL COMPONENTS WILL BE:  
 TUBE: ASTM A500 GRADE B  
 PLATE: ASTM A36  
 BOLTS: ASTM A325  
 NUTS: ASTM A563  
 WELDING: GMAW

NOTE:  
 COLUMN SIZE: HSS 8x6x3/16

PRELIMINARY: NOT FOR  
 CONSTRUCTION

**ICON**  
 Shelter Systems Inc  
 DISTINCTIVE STEEL SHELTERS  
 WWW.ICONSHelters.COM  
 COPYRIGHT 2004, ICON SHELTER  
 SYSTEMS, INC.  
 1455 LINCOLN AVE.  
 HOLLAND MI, 49423  
 616.396.0919  
 800.748.0985  
 616.396.0944 FX

Frame

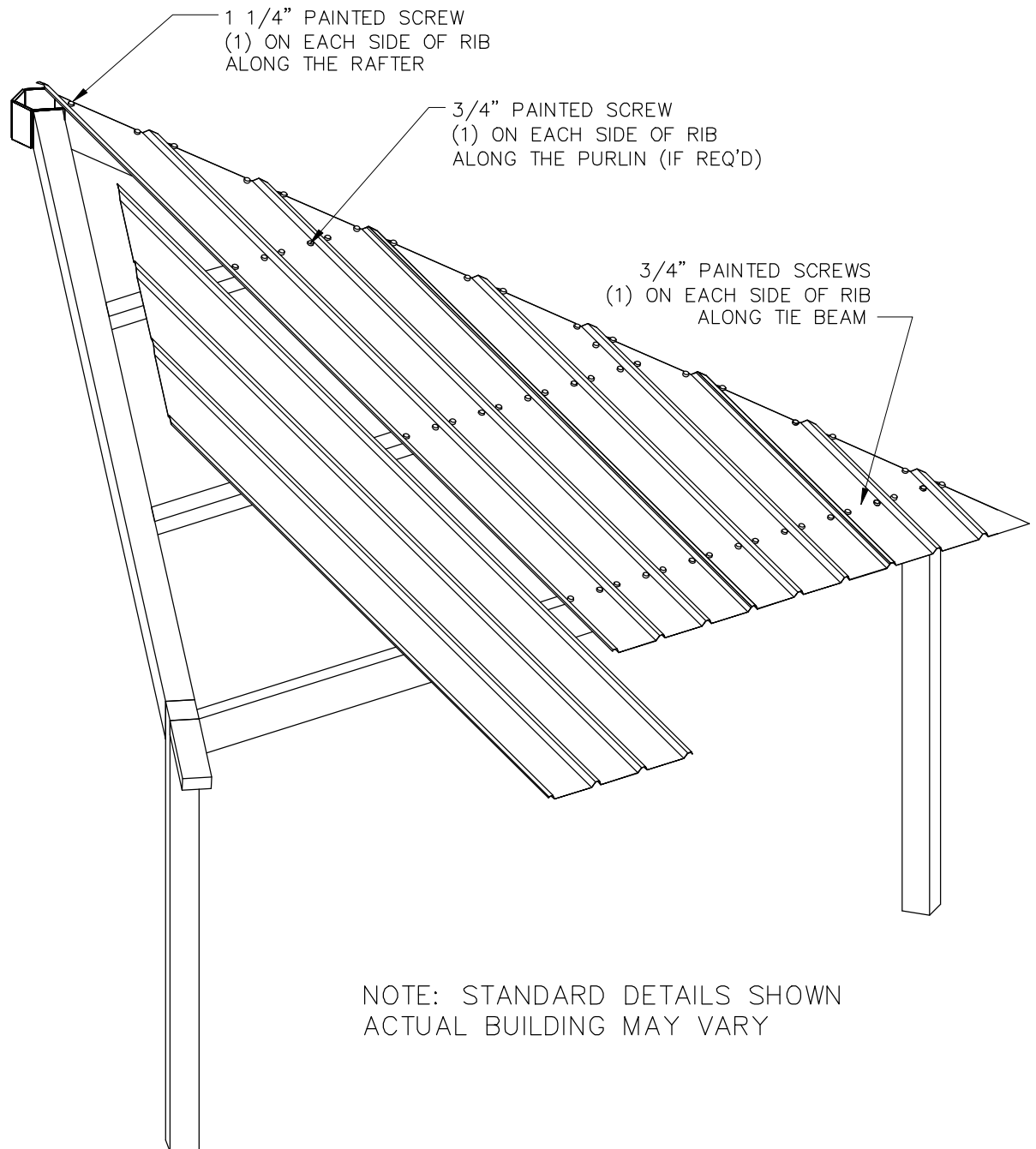
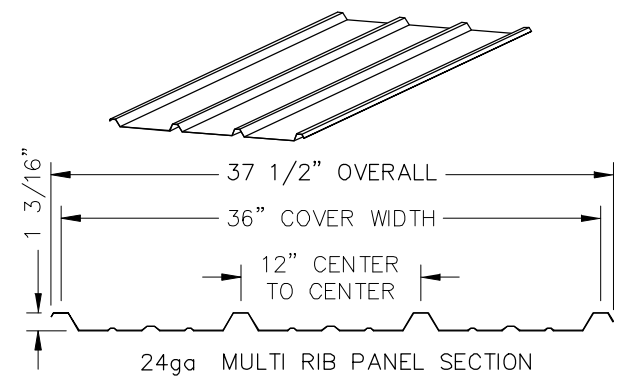
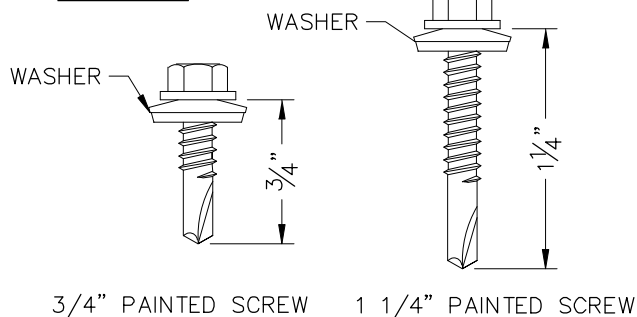
|                 |             |
|-----------------|-------------|
| DRAWN BY:       | ACP         |
| DATE:           | 4/3/2019    |
| PRELIMINARY ID: | 58717       |
| REVISION:       | A           |
| BUILDING TYPE:  | B050-10M-P4 |
| PROJECT NAME:   |             |

SHEET  
 3.0

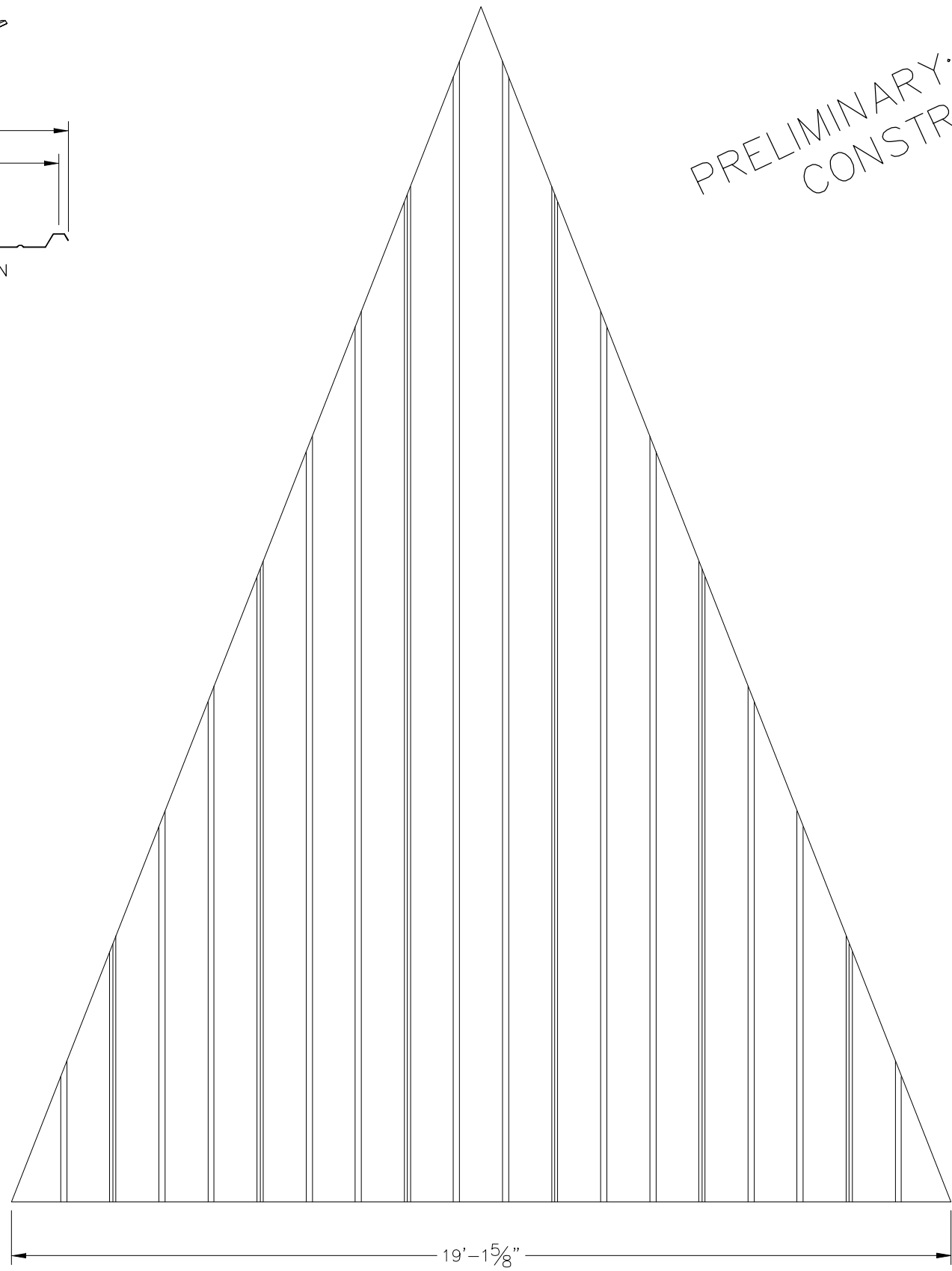
DWG:engineering\Standards\Shelters\B0\50\M-P4-25-120-40\Drawings\Preliminary\B050-10M-P4-25-120-40~58717.DWG

Engineering\AcadStandards\Blocks\Titles\ICONPRETIB  
 QF-73-01-42

**FASTENERS**



NOTE: STANDARD DETAILS SHOWN  
ACTUAL BUILDING MAY VARY



PRELIMINARY: NOT FOR  
CONSTRUCTION

**ICON**  
Shelter Systems Inc  
DISTINCTIVE STEEL SHELTERS  
WWW.ICONSHelters.COM  
COPYRIGHT 2004, ICON SHELTER SYSTEMS, INC.  
1455 LINCOLN AVE.  
HOLLAND MI, 49423  
616.396.0919  
800.748.0985  
616.396.0944 FX

Roof Layout

|                 |             |
|-----------------|-------------|
| DRAWN BY:       | ACP         |
| DATE:           | 4/3/2019    |
| PRELIMINARY ID: | 58717       |
| REVISION:       | A           |
| BUILDING TYPE:  | B050-10M-P4 |
| PROJECT NAME:   |             |

SHEET  
**4.0**

DWG:engineering\Standards\Shelters\B0\50\M-P4-25-120-40\Drawings\Preliminary\B050-10M-P4-25-120-40~58717.DWG