

Victoria Falls & Chobe National Park Adventure

WONDERS OF SOUTH AFRICA & SAFARI II POST-ADVENTURE VACATION STRETCHER
MAY 12-15, 2022



olivia™

USA & CANADA: 800-631-6277 x1 | INTERNATIONAL: 415-962-5700 x1



Victoria Falls, one of the greatest attractions in Africa and one of the most awe-inspiring waterfalls in the world, is located on the Zambezi River, the fourth largest river in Africa, which also defines the border between Zambia and Zimbabwe. With a length of more than a mile and a height of more than 354 feet, it is also considered to be the largest waterfall in the world.

The noise of Victoria Falls can be heard from a distance of 40 kilometers, while the spray and mist from the falling water rises to a height of over 400 meters and can be seen from 50 kilometers (30+ miles) away. No wonder the Falls earned the name Mosi-oa-Tunya, “the smoke that thunders.”

Located in northern Botswana, near the Okavango Delta, Chobe National Park is home to some of the world’s largest herds of elephants and Cape buffalo, which converge along the Chobe Riverfront in the dry months. Lions, antelopes, and hippos inhabit the woods and lagoons around Linyanti Marsh.

First set aside as a wildlife reserve in the 1930s, in 1968 this land became Botswana’s first national park. The floodable grasslands attract numerous bird species—440 to be exact, and the zebras that migrate through the park make it a top destination in Africa for wildlife viewing.

Don’t miss this opportunity to experience and feel the power of one of the largest and most spectacular waterfalls in the world followed by a supreme opportunity to view wildlife—including some of the biggest herds of elephants you could ever see—all in the company of Olivial

3-Night Victoria Falls & Chobe National Park Adventure (May 12-15, 2022)

\$5,499 PP DOUBLE OCCUPANCY

\$6,999 PP SINGLE OCCUPANCY

INCLUDED

- Airfare from Johannesburg, South Africa, to Victoria Falls, Zimbabwe (May 12), and from Kasane, Botswana, back to Johannesburg (May 15)*
- 2 nights at the Victoria Falls Hotel (check-in at 2 pm on May 12; checkout is at 10 am on May 14)
- Daily buffet breakfast at the Victoria Falls Hotel & Chobe Game Lodge
- Sunset cruise down the Zambezi River
- Half-day walking tour of Victoria Falls on the Zimbabwe side
- The Flight of Angels Helicopter tour over Victoria Falls
- Transportation across Zimbabwe-Botswana border to Chobe National Park
- 1 night at the Chobe Game Lodge with afternoon game drive or sunset cruise on May 14 and morning game drive on May 15
- Transfer from Chobe Game Lodge to Kasane Airport for flight to Johannesburg

USA & CANADA: 800-631-6277 x1 | INTERNATIONAL: 415-962-5700 x1

- All meals noted, tours, and alcoholic and nonalcoholic beverages at the Chobe Game Lodge**
- All departure taxes
- Round-trip hotel luggage portorage
- Any applicable park fees
- All gratuities
- Assistance of the Micato Travel Director
- Olivia Land Director to accompany the group

*We recommend that you book your international flight home to depart no earlier than 8 pm on May 15. The flight from Kasane to Johannesburg is scheduled to arrive in the late afternoon on May 15.

**Only at the Chobe Game Lodge. Excludes premium alcohol and wine.

NOT INCLUDED

International air to/from your home town, meals and beverages not indicated on the itinerary, and visas (a visa for Zimbabwe is required and can be paid for upon arrival). A malaria prophylactic is recommended, but we encourage you to check the website of the US Centers for Disease Control and Prevention (CDC) for the latest recommendations on vaccinations.

ACTIVITY LEVEL REQUIREMENTS – IMPORTANT

This post-trip Vacation Stretcher requires a **MODERATE** to **HIGH** level of mobility because it requires extensive walking and standing for extended periods of time on the walking tour and around the Victoria Falls Hotel and Chobe Game Lodge. In addition, you must be able to get in and out of a jeep on game drives. If you have limited mobility but still wish to meet the activity level requirements, you are required to travel with someone who can assist you. This post-trip Vacation Stretcher is not recommended for those in a wheelchair or scooter.

YOUR ITINERARY

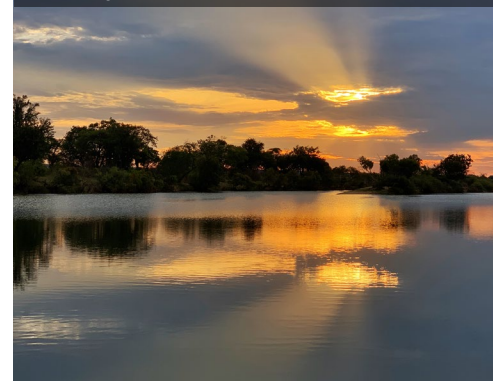
Batoka Gorge and Victoria Falls Bridge



Hippos Along the Zambezi River



African Sunset, Zambezi River



THURSDAY, MAY 12, 2022 (B,L,D)

After breakfast you'll be transferred to the Johannesburg International Airport for your scheduled flight to Victoria Falls, Zimbabwe.

Upon arriving at the Victoria Falls Airport, you'll be transferred to Victoria Falls Hotel, situated minutes from the famous Falls.

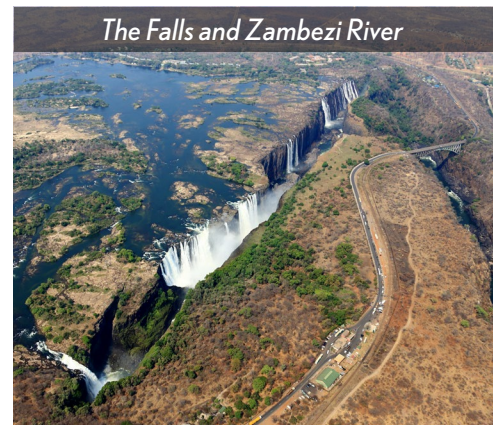
After settling in, you'll be taken for lunch at the Lookout Café. Perched 120 meters (394 feet) above the turbulent rapids of the Zambezi River, the café overhangs a giant chasm of the Batoka Gorge and is just downstream from the iconic Victoria Falls Bridge, which forms part of the café's spectacular backdrop.

After lunch, the remainder of your afternoon is yours to spend as you like—resting, exploring the grounds and encountering one of the baboon families, enjoying the pool, or just sitting and taking in the views.

In the late afternoon, you'll be transferred to the boat launch for a sunset cruise down the Zambezi River. A Victoria Falls must-do, this 2.5-hour cruise lets you relax on the river while enjoying sundowners and delightful hors d'oeuvres. Keep your cameras ready on the lookout for beautiful birds, crocodiles, and hippos!

The trip is made extra special by the timing, allowing us to enjoy the African sunset as it reflects on the river.

Tonight, when you return, you'll enjoy dinner at the hotel restaurant and get some rest for the next day's adventures!



FRIDAY, MAY 13, 2022 (B,L,D)

After breakfast, you will depart the hotel for a walking tour of Victoria Falls, one of the Seven Natural Wonders of the World. Witnessing Victoria Falls is awe inspiring. On this half-day walking tour, you'll be led by an expert guide with in-depth knowledge of the Falls and the surrounding wilderness areas.

You will be guided through the beautiful rainforest for just over two hours. From here, you can enjoy endless views of the Falls—feeling their strength in your body as the water thunders over the top and the cooling effect of the spray billowing off of them. As you walk through the rainforest, the guide will relay fascinating information about the geology, history, ecology, and legends that shroud this famous landmark, known affectionately by locals as Mosi-oa-Tunya, *The Smoke that Thunders*, describing the clouds of mist that rise up and drench everything and everyone in its reach!

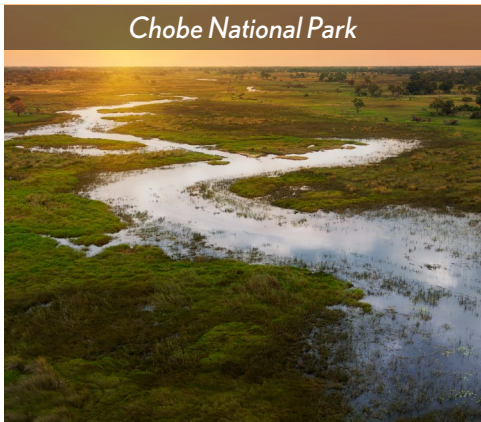
After your refreshing and informative walk and seeing the Falls from the ground, you'll return to the hotel for lunch before seeing them by air!

After lunch, you'll take to the skies by helicopter to view this national landmark from every angle. The largest sheet of falling water in the world, the Falls measure 1,700 meters (5,577 feet) across; although breathtaking from any vantage point, seeing the Falls from the sky, where you can truly appreciate the size, is truly *unforgettable*.

The *Flight of the Angels* tour is named after a passage in the diary of Scottish missionary and explorer David Livingstone following his first view of the Falls: "scenes so lovely must have been gazed upon by angels in their flight." The 12-minute excursion consists of four circuits, and takes you whirling over the Falls, along the meandering Zambezi River peppered with rapids, and across Zambezi National Park, where you may spot

wildlife running across the plains. As you fly, you can take in the full magnificent size of the Falls and take photos with unparalleled views of this natural wonder.

After taking in every view possible of these amazing falls, you will have the remainder of the afternoon free to explore the town of Victoria Falls, revisit the Falls, or relax before meeting for dinner tonight.



SATURDAY, MAY 14, 2022 (B,L,D)

Enjoy Victoria Falls for the last morning with a delicious breakfast and perhaps a walk in the gardens. Afterward, you'll check out and board your vehicle for a scenic transfer to Chobe National Park in Botswana.

Tucked away in the north of Botswana near the borders of Zimbabwe, Zambia, and Namibia, Chobe National Park is the third largest conservation area in Botswana. The park is home to a variety of habitats and flora and hosts a unique collection of wildlife, from Puku antelopes to leopards and hundreds of species of birds. Chobe is also home to Africa's largest and most concentrated elephant population, numbering approximately 50,000 elephants.

After arriving, settling in, and taking in your new surroundings, you'll enjoy lunch at the lodge and then head out for your choice of a boat cruise or game drive along the Chobe River.

Riverboat Option:

The skimmer boats seat up to 12 people in movable deck chairs on a flat, stable platform and are specifically designed to ensure everyone can enjoy great views of the scenery or wildlife.

The game viewing while on a river safari in Chobe is unsurpassed anywhere in Botswana. Elephants line the water's edge, hippos congregate in lagoons, hundreds of antelope and giraffes make their way to the water, and sightings of predators along the riverbanks are common.

Afternoon Game Drive Option:

The afternoon drive will depart the lodge in the late afternoon, only returning at park closure time after sunset, to maximize your time you spend out in the park to enjoy those special sightings.

The drive follows the Chobe River as your experienced guide, part of an all-female guide team, interprets the bush signs and tracks to locate the resident wildlife. Though you can't plan wildlife, encounters with elephants are frequent and huge herds of buffalo abound.

The ever-present impala and the majestic giraffe are both common residents, while sightings of the puku antelope are also possible. Predators are plentiful in this region of the Chobe National Park, and you may see lions, wild dogs, or leopards. The Chobe Game Lodge vehicles are open-air 4WD game viewers designed to make your trip comfortable and your viewing experience optimal.

Whichever option you choose to spend your afternoon in Chobe National Park, you will enjoy a gorgeous sunset before returning back to the lodge, where you will meet to share stories of your sightings and experiences over dinner!

SUNDAY, MAY 15, 2022 (B)

This morning, you will go on an early morning game drive before breakfast. Early morning game drives set off as soon as the park opens, giving you the best chance of tracking predators while they are still active, before it gets too warm.

You'll head out with your guide for a few hours, looking for those last wildlife sightings and taking in your final views of this beautiful and vast park! Upon returning to the lodge, you'll enjoy breakfast before checking out and being transferred to the Kasane airport for your flight back to Johannesburg, where you will catch your international flight back home.

YOUR HOTELS



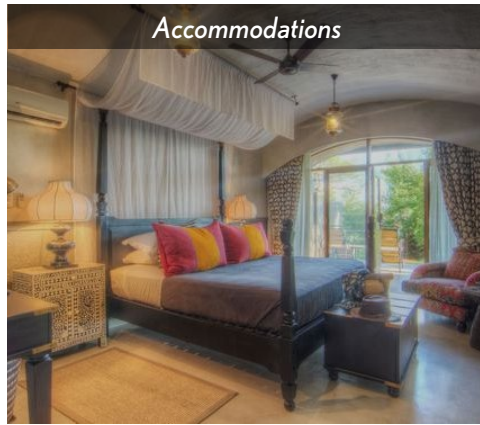
VICTORIA FALLS HOTEL

The first hotel built in Victoria Falls, your luxurious accommodations offer original colonial-style, Edwardian charm paired with all the modern comforts. Situated minutes from the famous and spectacular Falls, it is surrounded by a perfectly manicured garden and overlooks Victoria Falls Bridge and the gorges. Each room captures the charm of a bygone age, complete with colonial prints, four-poster and canopied beds, antique furniture, and pertinent artifacts.

In-room amenities include a television with satellite, coffee and tea maker, hairdryer, in-room safe, and complimentary in-room wifi. Hotel amenities include four restaurants and bar/lounge, outdoor pool, fitness center, laundry facilities and services, spa services, library, and wifi in the lobby.



Chobe Game Lodge



Accommodations



Lodge Property

CHOBÉ GAME LODGE

As the only game lodge in the heart of the Chobe National Park, Chobe Game Lodge offers a prime position from which to explore. Here, the outstanding rooms overlook the river and offer spacious decks, air-conditioning, and a complimentary minibar. The Lodge boasts six comfortably furnished viewing decks overlooking the park so you can truly switch off and enjoy the serenity of the natural surroundings.

The newly rebuilt and decorated standard rooms have been expanded in size and lead onto a spacious terrace facing the Chobe River. Inside the rooms are all the amenities and comforts you expect from a luxury safari lodge. The en-suite bathrooms include a large bath and separate shower, while air conditioners and overhead fans ensure you are comfortable throughout your stay at Chobe Game Lodge.

NEED MORE INFO? READY TO BOOK?

Our Travel Consultants can be reached from the US at 800-631-6277 x1 or from outside the US at 415-962-5700 x1. Due to high demand, our vacation stretchers sell out very quickly!

DEADLINE TO BOOK IS NOVEMBER 15, 2021 OR UNTIL SOLD OUT.

Cancellation Policy: *Olivia Companies, LLC is required to honor their contractual agreements with hotels, ground operators, and other outside vendors; therefore, the following cancellation fees apply: All Vacation Stretcher packages are non-refundable. A handling fee of \$75 will be charged for any name changes to hotel and tour packages. Your booking/payment for Vacation Stretchers with Olivia Companies, LLC indicates your compliance with the above policies.*

While we do our best to confirm hotels and itineraries in advance, they are always subject to change.

USA & CANADA: 800-631-6277 x1 | INTERNATIONAL: 415-962-5700 x1