

oliviaTM

THE TRAVEL COMPANY FOR LGBTQ+ WOMEN

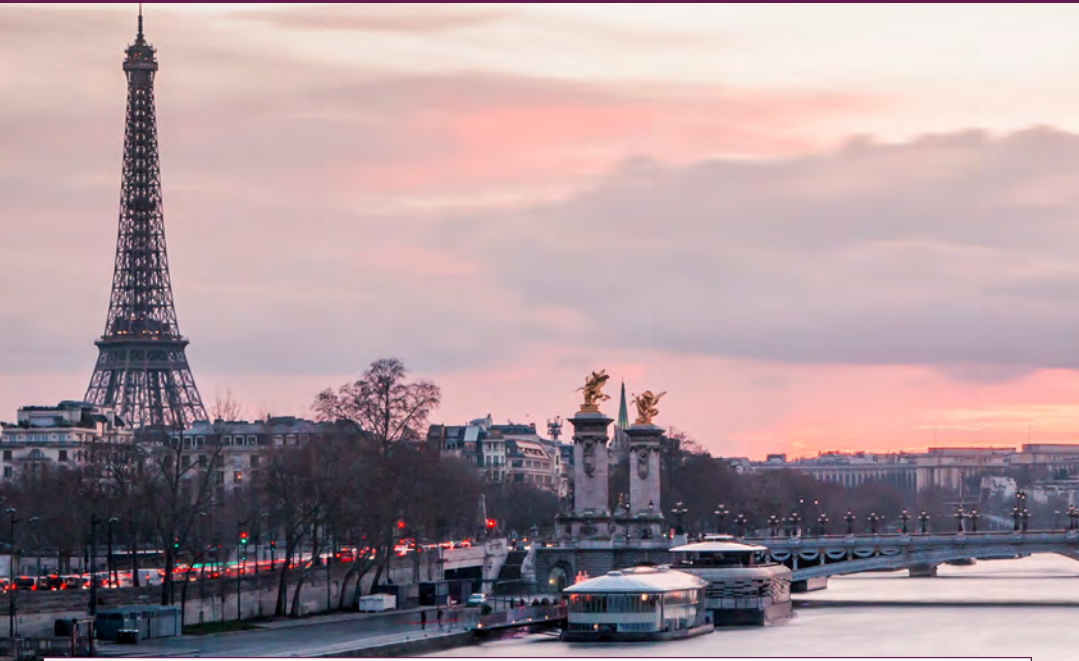


BURGUNDY AND PROVENCE RIVERBOAT CRUISE II

JULY 26–AUGUST 2, 2022
on board *Avalon's Poetry II*

PARIS | BEAUNE | LYON |
TAIN L'HERMITAGE |
TOURNON | VIVIERS |
LOCK BOLLÈNE | AVIGNON |
ARLES | POINT-SAINT-
LOUIS-DU-RHÔNE |
CAMARGUE REGION





Welcome to France! You'll arrive in Paris and then continue on by motorcoach to fascinating Beaune for an included visit of Hôtel-Dieu, or you may choose a complimentary wine-tasting tour. Next, board your ship in France's gastronomic capital of Lyon. You'll spend a full day in Lyon before setting sail to as well as medieval Tournon, charming Viviers, Avignon, Arles, and Port-Saint-Louis. Daylight permitting, sail into the peaceful Camargue area. Book early, as this trip sold out in the past!





ITINERARY SUMMARY

Tuesday, July 26, 2022

Wednesday, July 27, 2022

Thursday, July 28, 2022

Friday, July 29, 2022

Saturday, July 30, 2022

Sunday, July 31, 2022

Monday, August 1, 2022

Tuesday, August 2, 2022

Paris, Beaune, and Lyon

Lyon

Tain l'Hermitage and Tournon

Viviers, Lock Bollène, and Avignon

Avignon

Arles

Port-Saint-Louis-du-Rhône

Port-Saint-Louis-du-Rhône

**Please note: Itinerary is subject to change.*

INCLUDED

- Early morning transfer from host hotel in Paris to the ship in Lyon on July 26, with a stop in Beaune with included tour (choice of wine tasting or the Hotel Dieu tour) (travel time is approx. 5 hours). Included sightseeing tours in Beaune, Lyon, Tain-l'Hermitage -Tournon, Viviers, Avignon, Arles, and Port-Saint-Louis Camargue Nature Reserves
- Accommodations for 8 days/7 nights in Comfort Collection beds with Egyptian super-combed cotton linens on board Avalon's ms *Poetry II*
- All meals while on board, with a French cheese and French cuisine option each evening
- Wines from France's most famous wine regions, beer, or soft drinks with lunches and dinners and complimentary sparkling wine with breakfast
- Coffee, tea, and juices during all meals
- Premium coffees, cappuccinos, lattes, hot chocolate, and teas throughout the day
- Cookies and fresh fruit available throughout the day
- Complimentary filtered water for your reusable water bottle
- Complimentary wifi on board
- Complimentary bicycles available for time on shore
- Complimentary Nordic walking sticks
- Gratuities to ship staff (you may tip more if you wish)
- Gratuities to your tour guide and bus driver (you may tip more if you wish)
- Olivia's signature entertainment and programming
- Local Entertainment, commentaries while cruising and historic talks by local expert and Avalon Cruise Director
- Group transfer from ship in Port-Saint-Louis to Marseille airport on August 2 (for flights departing after 10:30 am)
- Olivia Staff assistance throughout

NOT INCLUDED

Arrival transfer from airport to host hotel, optional excursions (they do not conflict with included tours), wine tasting, alcoholic beverages and soft drinks (except where indicated), laundry, phone/fax, and personal incidentals.



SHIP AMENITIES:

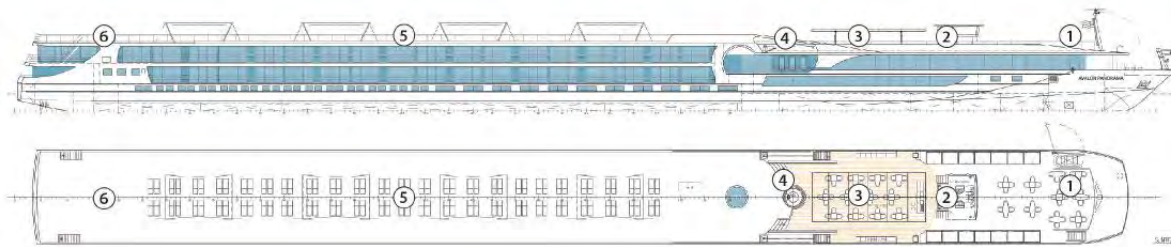
- Elegant, contemporary design
- Wall-to-wall panoramic windows
- Outside viewing deck and Sky Deck with premium lounge chairs and whirlpool
- Full buffet breakfast with sparkling wine and made-to-order egg station, as well as early- and late-riser breakfasts
- Room service for continental breakfast and beverages (service fee applies)
- Choice of lunch buffet with carving and pasta stations, al fresco lunch in the Sky Grill, or light lunch in the Panorama Lounge
- Choice of four-course dinner with choice of appetizers, soups, salads, entrées and desserts or cheese dinner in the Dining Room or delectable petite portions of regional specialties and wines in the Panorama Bistro
- Self-serve beverage station—with complimentary tea, hot chocolate, and premium coffees—and fresh fruit available throughout the day
- Choice of leisurely (gentle walkers), traditional, and independent sightseeing options
- Headsets for all guided shore excursions and sightseeing with certified local guides
- Nordic walking sticks and loaner bicycles to use while docked



The beautifully designed ship, the *Poetry II*, was built in 2014. Its staterooms (with high windows, just above the waterline) and suites (with wall-to-wall panoramic windows) are well-appointed and are among the largest on the river.

- Complimentary maps
- Onboard lectures, activities, and nightly entertainment—experiences with local chefs, entertainers, artisans, experts to bring the customs, cultures, and tastes of your destinations to life—and movie nights, as well as a behind-the-scenes ship tour
- Well-stocked library
- Sky Deck game area
- Expanded fitness center
- Water-Refill Station
- Complimentary computer use in public areas
- Complimentary wifi access
- Elevator
- Entirely nonsmoking interior
- Friendly, English-speaking crew
- Services of the Cruise Director to further personalize your cruise, including making recommendations and reservations

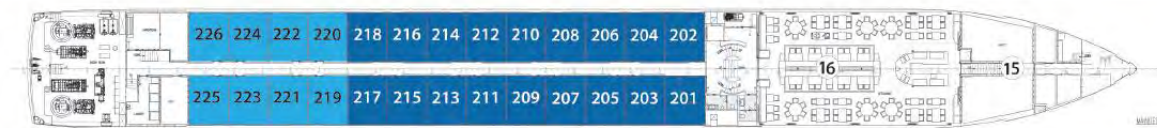
SKY DECK



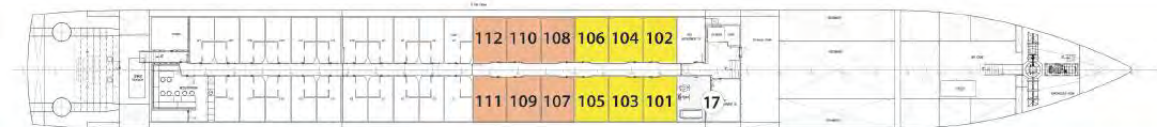
ROYAL DECK



SAPPHIRE DECK



INDIGO DECK



DECK PLAN

- | | | |
|---|----------------------|-------------------|
| 1 Sky Lounge | 6 Deck Game Area | 12 Elevator |
| 2 Navigation Bridge | 7 Observation Lounge | 13 Lobby |
| 3 Sky Grill | 8 Panorama Bistro | 14 Club Lounge |
| 4 Whirlpool | 9 Panorama Lounge | 15 Galley |
| 5 Premium Lounge
Chairs and Shade
Awnings | 10 Bar | 16 Dining Room |
| | 11 Reception | 17 Fitness Center |

CATEGORIES

- | | |
|--------------------|---|
| Royal Suite | Royal Deck Royal Suites |
| Cat. P | Royal Deck Panorama Suites |
| Cat. A | Sapphire Deck Forward Panorama Suites |
| Cat. B | Sapphire Deck Aft Panorama Suites |
| Cat. D | Indigo Deck Aft Deluxe Staterooms |
| Cat. E | Indigo Deck Forward Deluxe Staterooms |

CABIN AMENITIES:

- Some of the largest accommodations available on a European river
- Two windows (high windows, above the waterline, in the Staterooms, and wall-to-wall panoramic windows in the Panorama and Royal suites) and elegant, contemporary décor
- Comfort Collection Beds, with Memory foam mattress toppers, in your choice of bed configuration, Egyptian supercombed cotton linens, European-style duvets, extra blankets, and both soft and firm pillows
- Alarm clock, bedside tables with reading lamps, and easy under-bed luggage storage
- Spacious 3-door closets with shelves for ample storage
- Bathroom with full shower with glass door, vanity and large mirror, hairdryer, bathrobes and slippers, and L'Occitane bath products
- Writing desk
- Flatscreen satellite TV with English-speaking TV channels and over 100 free movie options
- Direct-dial telephone
- Well-stocked minibar (billed on consumption) and water-refill stations
- In-room safe
- Individual climate control
- Complimentary wifi
- Nightly turndown service

POETRY II



DELUXE STATEROOM, CATEGORY E

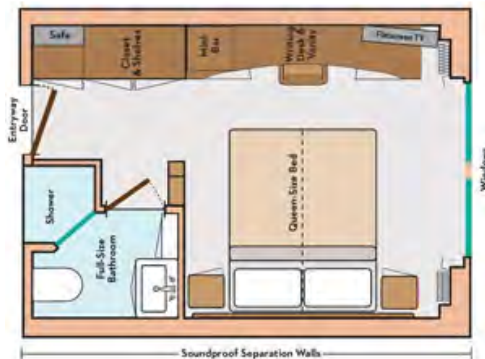
EARLY BIRD \$4,499 PP REGULAR \$5,899 PP

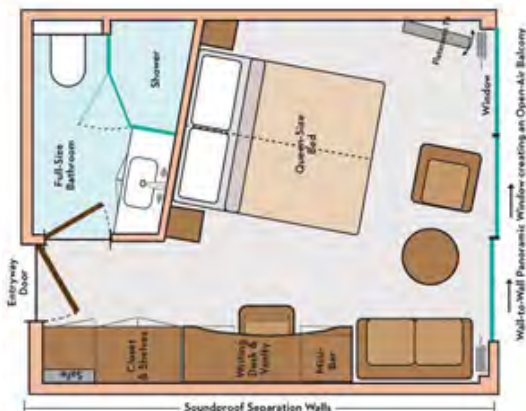
Located on the Indigo deck, this Deluxe Stateroom features small windows above the waterline, a Comfort Collection bed that can convert to two single beds, soft and firm nonallergenic pillows, Egyptian super-combed cotton linens, flat-screen satellite TV with movie channels, telephone, minibar, full shower with glass doors, robes, slippers, writing desk and chair, and full-length closets. (172 sq. ft.)

DELUXE STATEROOM, CATEGORY D

EARLY BIRD \$4,599 PP REGULAR \$5,999 PP

Located on the Indigo deck, this Deluxe Stateroom features small windows above the waterline, a Comfort Collection bed that can convert to two single beds, soft and firm nonallergenic pillows, Egyptian super-combed cotton linens, flat-screen satellite TV with movie channels, telephone, minibar, full shower with glass doors, robes, slippers, writing desk and chair, and full-length closets. (172 sq. ft.)





PANORAMA SUITE, CATEGORY B

EARLY BIRD \$5,399 PP REGULAR \$7,099 PP

Located on the Sapphire deck, this Panorama Suite features floor-to-ceiling windows, a Comfort Collection bed that can convert to two single beds, soft and firm nonallergenic pillows, Egyptian super-combed cotton linens, flat-screen satellite TV with movie channels, telephone, minibar, bathroom with marble counter, robes, slippers, writing desk and chair, sofa, and full-length closets. (200 sq. ft.)

PANORAMA SUITE, CATEGORY A

EARLY BIRD \$5,499 PP REGULAR \$7,199 PP

Located on the Sapphire deck, this Panorama Suite features floor-to-ceiling windows, a Comfort Collection bed that can convert to two single beds, soft and firm nonallergenic pillows, Egyptian super-combed cotton linens, flat-screen satellite TV with movie channels, telephone, minibar, bathroom with marble counter, robes, slippers, writing desk and chair, sofa, and full-length closets. (200 sq. ft.)

PANORAMA SUITE, CATEGORY P

EARLY BIRD \$5,599 PP REGULAR \$7,299 PP

Located on the Royal deck, this Panorama Suite features floor-to-ceiling windows, a Comfort Collection bed that can convert to two single beds, soft and firm nonallergenic pillows, Egyptian super-combed cotton linens, flat-screen satellite TV with movie channels, telephone, minibar, bathroom with marble counter, robes, slippers, writing desk and chair, sofa, and full-length closets. (200 sq. ft.)



ROYAL SUITE

EARLY BIRD \$6,499 PP REGULAR \$8,499 PP

Located on the Royal deck, the Royal Suite features floor-to-ceiling windows, a Comfort Collection bed that can convert to two single beds, soft and firm nonallergenic pillows, Egyptian super-combed cotton linens, flat-screen satellite TV with movie channels, telephone, minibar, bathroom with marble counter and two sinks, robes, slippers, writing desk and chair, sofa, and full-length closets. (300 sq. ft.)

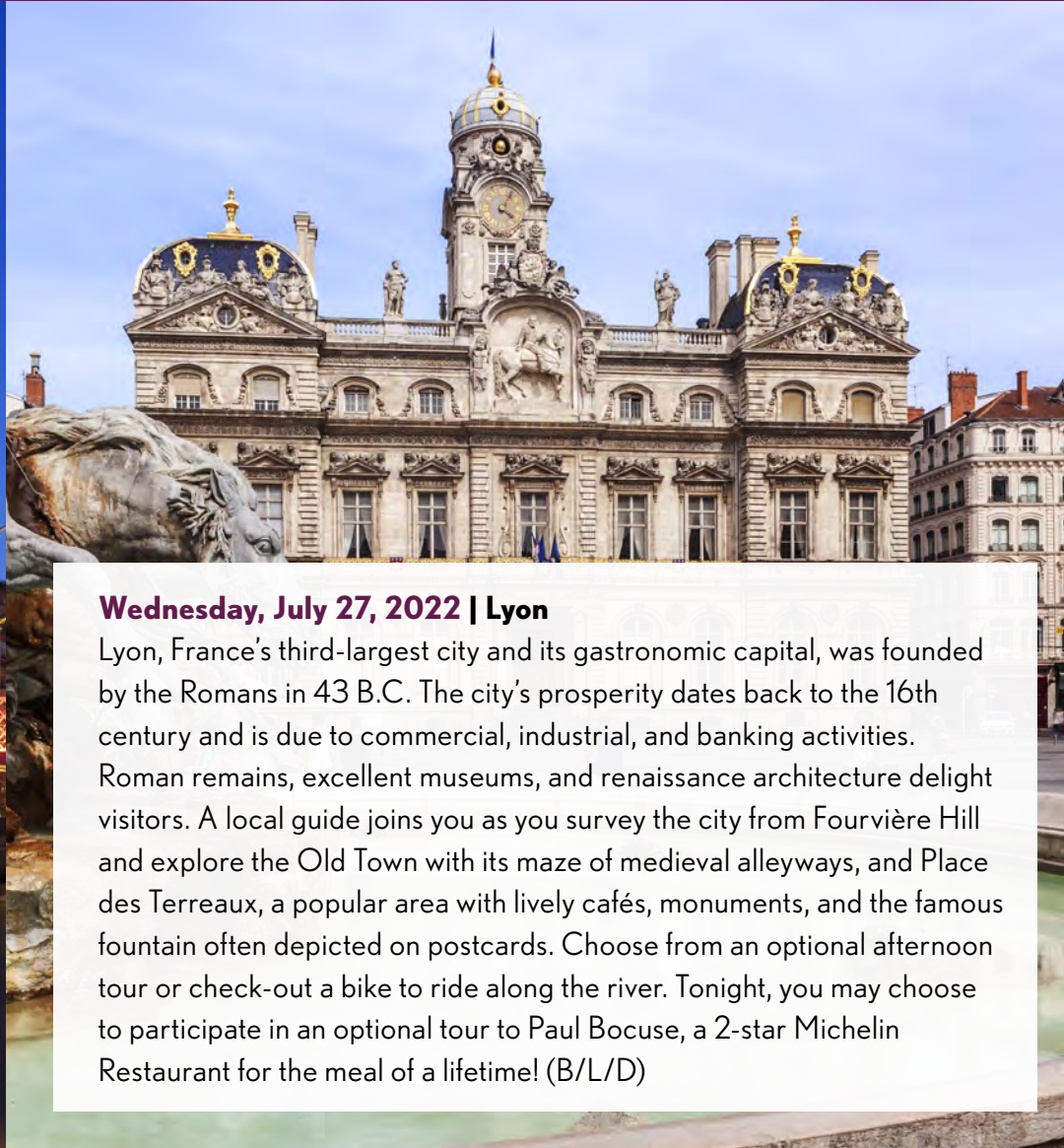
PARIS / BEAUNE / LYON

Tuesday, July 26, 2022 | Paris, Beaune, and Lyon (embarkation)

This morning, transfer from Paris host hotel to Beaune, the unofficial capital of the Côte d'Or area. Beaune owes its wealth to the production, aging, and selling of fine wines. Although life here centers around wine, Beaune offers much more. Today, you have an included tour. Choose from a wine tasting in a local cellar, OR visit the HÔTEL-DIEU charity hospital, built in 1443 and paid for by the chancellor of Burgundy after the Hundred Years' War left many of the town's population destitute. Today it houses Van der Weyden's painting of *The Last Judgment* and is one of France's architectural highlights. Then, continue to Lyon, where you'll board your river cruise vessel. Before dinner, meet your Olivia staff and ship's crew at a welcome reception. (-/-/D)



LYON



Wednesday, July 27, 2022 | Lyon

Lyon, France's third-largest city and its gastronomic capital, was founded by the Romans in 43 B.C. The city's prosperity dates back to the 16th century and is due to commercial, industrial, and banking activities. Roman remains, excellent museums, and renaissance architecture delight visitors. A local guide joins you as you survey the city from Fourvière Hill and explore the Old Town with its maze of medieval alleyways, and Place des Terreaux, a popular area with lively cafés, monuments, and the famous fountain often depicted on postcards. Choose from an optional afternoon tour or check-out a bike to ride along the river. Tonight, you may choose to participate in an optional tour to Paul Bocuse, a 2-star Michelin Restaurant for the meal of a lifetime! (B/L/D)

Thursday, July 28, 2022 | Tain L'Hermitage and Tournon

The twin cities of Tain l'Hermitage and Tournon lie nestled among vineyards between the Rhône River and the granite slopes of the Hermitage. A local guide will show you Tournon, one of France's oldest medieval cities, with its imposing 16th-century castle and Roman ruins. Your Olivia Cruise Director will take you to one of the best chocolate shops in Tain l'Hermitage for some free tastings.



TAIN-L'HERMITAGE / TOURNON

Friday, July 29, 2022 | Viviers, Lock Bollène, and Avignon

World history in a charming French country village. Explore the pale stone buildings of Viviers on a morning guided walking tour of this charming village. You'll see it's Romanesque cathedral and Old Town with a mix of historical Christian, Roman and Medieval influences. This afternoon enjoy scenic cruising, with a cruise through the soaring walls of the Lock Bollène enroute for an after-dinner arrival to Avignon. (B/L/D)

Saturday, July 30, 2022 | Avignon

The fortified city of Avignon is the capital of the Vaucluse region, the most picturesque part of Provence with its intact ramparts encircling the entire city, cobblestone streets and squares, and private mansions built in the 18th and 19th centuries. Known as the "City of Popes," it was the center of the Catholic Church in the 14th century. During your guided tour, you may choose to join an included visit of the Palace of the Popes, built in the 14th century as the sovereign popes' residence. A photo of the famous Pont Saint Bénézet (Saint Bénézet Bridge), of the popular song Sur le Pont d'Avignon, is a must. Optional excursions to Pont du Gard or to the famed wine cellars of Châteauneuf-du-Pape are available for purchase. (B/L/D)



**VIVIERS /
LOCK BOLLÈNE / AVIGNON**

Sunday, July 31, 2022 | Arles

Located on the northern tip of the Camargue, Arles is capital of the Provence region. Your local guide will show you highlights of the city and you'll visit the Roman Amphitheater. Still used today, it dates to the 1st century and was constructed to hold more than 20,000 spectators. Visit areas where Van Gogh lived and painted. Or attend a painting workshop to learn the styles and techniques of Vincent Van Gogh. Take advantage of optional excursions or any free time remaining with a stop in Le Café Van Gogh for a coffee or glass of wine, to relax and watch the world go by. (B/L/D)



LE JARDIN DE LA MAISON DE SANTÉ A ARLES

"... C'est une galerie à arcades comme des bâtiments arabes, blanchie à la chaux. Devant ces galeries un jardin antique avec un étang au milieu et huit parterres de fleurs, du myosotis, des roses de Noël, des anémones, des renoncules, de la giroflée, des marguerites etc. Et sous la galerie des orangers et des lauriers-roses. C'est donc un tableau tout plein de fleurs et de verdure printanière..."

Vincent van Gogh. Lettre de Vincent à sa sœur Wilhelmine. Avril 1889.

Oskar Reinhardt Sammlung — Winterthur - Suisse.



ARLES



PORT-SAINT- LOUIS-DU-RHÔNE

DETAILED ITINERARY

Monday, August 1, 2022 | Morning Scenic Cruise to Port-Saint-Louis-Du-Rhône, Camargue Region

Enjoy a morning cruise to Port-Saint-Louis on the Sky Deck of your ship. Today we visit the tranquil vistas of Camargue National Park. Choose from a visit to an Oyster farm to enjoy oyster tasting and learn how this delicacy is farmed or join a guided scenic drive through the Camargue Regional Nature Park. You'll see lush marshland habitat at the mouth of the Rhône—home to a variety of flora and fauna—in one of France's most protected and natural reserves. (B/L/D)

Tuesday, August 2, 2022 | Port-Saint-Louis (disembarkation)

After breakfast, disembark on your included group transfer to the Marseille Airport for your journey home, or to your next destination, or join us on our extended stretcher to Marseille. (B/-/-)

Included Tours and Optional Tours: Each city we visit will have an included walking or city tour. In addition, you will have the option to purchase optional tours that may range in price from 35 Euros to over 300 Euros (to experience a full meal with wine pairings at a Michelin 2 or 3-star restaurant!) These optional tours will not conflict with your included excursions. It's a way to experience and see a little more of these beautiful places we visit, go to wine regions and more historical areas of this region. Payments for the optional tours are made directly with your Avalon Cruise Director, separate from your on-board account. Or you can use that free time to shop, check out a complimentary bike from the ship and ride along the river, or take a nap!

Please note: Itinerary is subject to change based on river level, traffic, and locks.

PARIS



VACATION STRETCHERS

MARSEILLE



We are offering 1-, 2-, and 3-day pre-trip Vacation Stretchers in Paris, France (July 25-26, July 24-26, and July 23-26, 2022). We are also offering a 1- and 2-night post-trip Vacation Stretchers in Marseille, France (August 2-3 and August 2-4, 2022). Please check our [Vacation Stretcher tab](#) for more information.

CATEGORY

DELUXE STATEROOM, CATEGORY E

Located on the Indigo deck, 172 sq. ft.

DELUXE STATEROOM, CATEGORY D

Located on the Indigo deck, 172 sq. ft.

PANORAMA SUITE, CATEGORY B

Located on the Sapphire deck, 200 sq. ft.

PANORAMA SUITE, CATEGORY A

Located on the Sapphire deck, 200 sq. ft.

PANORAMA SUITE, CATEGORY P

Located on the Royal deck, 200 sq. ft.

ROYAL SUITE

Located on the Royal deck, 300 sq. ft.

PRICING PP

EARLY-BIRD: \$4,499

REGULAR: \$5,899

EARLY-BIRD: \$4,599

REGULAR: \$5,999

EARLY-BIRD: \$5,399

REGULAR: \$7,099

EARLY-BIRD: \$5,499

REGULAR: \$7,199

EARLY-BIRD: \$5,599

REGULAR: \$7,299

EARLY-BIRD: \$6,499

REGULAR: \$8,499

faq

ACTIVITY LEVEL

This trip requires a level of mobility, as most of the tours are walking tours for up to 3 hours, which may include walking on cobblestone streets and stairs. A 'Gentle Walkers' Group is offered on most included walking tours, which accommodates those needing a little extra time, and sometimes a shortened version of a tour, keeping in mind as few stairs as possible. If you are bringing a portable wheelchair or collapsible travel scooter, they must be able to collapse and be stored in your cabin. They cannot be used to get around the ship, only to use while off the ship. They may be used on tours that are accessible, but that can be difficult because of the cobblestone streets, stairwells, and the need to lift them up on curbs.

If you do have limited mobility, you are required to travel with someone who can assist you.

FLIGHTS

We highly recommend arriving in Paris one or two days early. Flights need to arrive in **Paris, France (CDG)** and out of **Marseille, France (MRS)**. Flights must arrive prior to or in the early morning on July 26 with enough time to make the included transfer at approximately 8 am with stop in Beaune from host hotel to ship. (Exact time/hotel meeting location TBA). To take advantage of the included group transfer to the Marseille airport on August 2, flights from Marseille must depart after 10:30 am.

AIRFARE

Please check our airline discounts page for the latest discounts:
<https://www.olivia.com/airfare-specials>



oliviaTM



CALL YOUR OLIVIA TRAVEL CONSULTANT
USA & CANADA: 800-631-6277 INTERNATIONAL: 415-962-5700 X1

