

Epicor Data Discovery (EDD)

Product

- ▶ Epicor® ERP

Benefits

- ▶ Become a data-driven company able to quickly make informed decisions
- ▶ Display live, role-based, key metrics to workers automatically when they log in
- ▶ Visualize, anticipate, and pre-empt equipment and production degradation with Epicor IoT
- ▶ Save time by visually spotting anomalies and automatically drilling down into transactional detail in EDD or Epicor ERP
- ▶ Enable employees to access and tailor visualizations in a self-service capacity

Key Features

- ▶ Built for mobile
- ▶ EDD included with Epicor ERP
- ▶ Real-time Epicor ERP operational data
- ▶ Visualizes Epicor IoT data from Microsoft® Azure™ IoT Hub
- ▶ Side-by-side display of EDD views with forms and trackers in Epicor ERP
- ▶ Open Epicor ERP trackers and forms from EDD selected data
- ▶ Connects to canned and custom Epicor ERP Business Activity Queries (BAQs)
- ▶ EDD Advanced connects to cubes built in Microsoft® SQL Server® Analysis Services
- ▶ Tied to Epicor ERP login—EDD Advanced has additional option of Microsoft Single Sign-On for Active Directory and Azure™ Active Directory

Visualizing Real-Time Operational Data

Epicor Data Discovery (EDD) is a data visualization tool for Epicor ERP. With EDD, staff can use their natural visual abilities to quickly spot areas of interest in real-time production data that they might have otherwise missed by just looking at rows and columns of numbers.

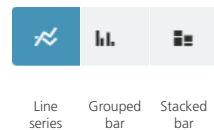
In the Data Discovery view, users can set filters and drag and drop measures and dimensions to produce rich visualizations—a process like manipulating a pivot table in a spreadsheet. They can then focus on a data point or area and drill down into the underlying ERP transactional detail.

Driven by real-time Business Activity Queries (BAQs) in Epicor ERP and other data sources, EDD complements Epicor Data Analytics (EDA)—EDD visualizes short-term, up-to-the-second enterprise data out of the box. Meanwhile, EDA allows for longer-term data exploration with full, pre-built content packs running in a cloud-based data warehouse.



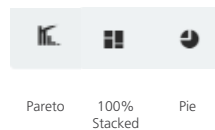
Drag and drop measures and dimensions in the Data Discovery View to gain new insights.

Compare



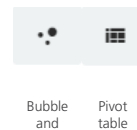
Line series Grouped bar Stacked bar

Percent of total



Pareto 100% Stacked bar Pie

Correlate



Bubble and dotplot Pivot table

Trendline



EDD action buttons instantaneously switch views of your data

Built in the new Epicor Kinetic Design System for a clean, modern, intuitive, and streamlined user experience, EDD is accessible via SmartClient, web browsers, tablets, and modern smartphones. The application is designed to work just as well on low-powered touch devices as it does on a powerful desktop with large screen real estate. EDD automatically adjusts its layout and behavior to the browser and device accessing it.

Resizable data cards can be animated when you mouse click on them, to cycle through multiple values like a stock ticker to provide a live feed of production data. Data views can be combined into a BI Dashboard with shared dimensions and cross filters and added to Epicor ERP Active Home Page.

EDD Content

A full assortment of 30+ metrics across five role types are included with EDD. These provide great starting points for users to explore in the Data Discovery View or create new metrics.

Executive role

- ▶ Average order total today
- ▶ Gross profit today
- ▶ Sales today
- ▶ COGS vs. profit
- ▶ Orders today
- ▶ Order history

Finance role

- ▶ AR balance
- ▶ AP balance
- ▶ Sales YTD vs. LYTD
- ▶ Customers past due on payments a.k.a outstanding receivables
- ▶ Not invoiced shipments—number and amount
- ▶ Aged payables
- ▶ Aged receivables

Supply chain role

- ▶ Quote win/loss analysis
- ▶ Quotes—count and amount
- ▶ Orders entered quantity and amount (sales) RMAs quantity and amount
- ▶ Obsolete inventory
- ▶ Purchase price variance
- ▶ Open PO count and amount
- ▶ Negative inventory items/out of stock
- ▶ Orders past due quantity and amount
- ▶ Orders backlogged quantity and amount
- ▶ Orders shipped quantity and amount by defined criteria
- ▶ On-time/overdue shipments—counts and percentage vs. total shipped



Indicators with thresholds set up for IoT widgets make it easy to spot the alerts.



Manufacturing role

- ▶ Clean vs. occurrence jobs
- ▶ Manufacturing hours and indirect/downtime hours
- ▶ Job count by status
- ▶ Job cost element breakdown
- ▶ Indirect hours by reason

Project management role

- ▶ Budget vs. actual
- ▶ Completion percent
- ▶ Profit margins

Epicor IoT Widgets

Epicor IoT is an Epicor ERP module that integrates with the Microsoft Azure IoT Hub. This application monitors and visualizes data from sensors and other Epicor products. Epicor IoT leverages Microsoft Azure IoT Hub to gather Epicor ERP's context and in-depth production data. Users gain intelligent insights into the production and day-to-day enterprise activities—achieving deep levels of operational efficiency. The Epicor IoT Data Discovery widget alerts decision makers in real time to what needs attention on the shop floor and improves productivity as a result. Each machine or device sensor can be set up with a Key Performance Indicator (KPI) setting such as allowable temperature ranges.

EDD Card Views and Dashboards in Active Home Page

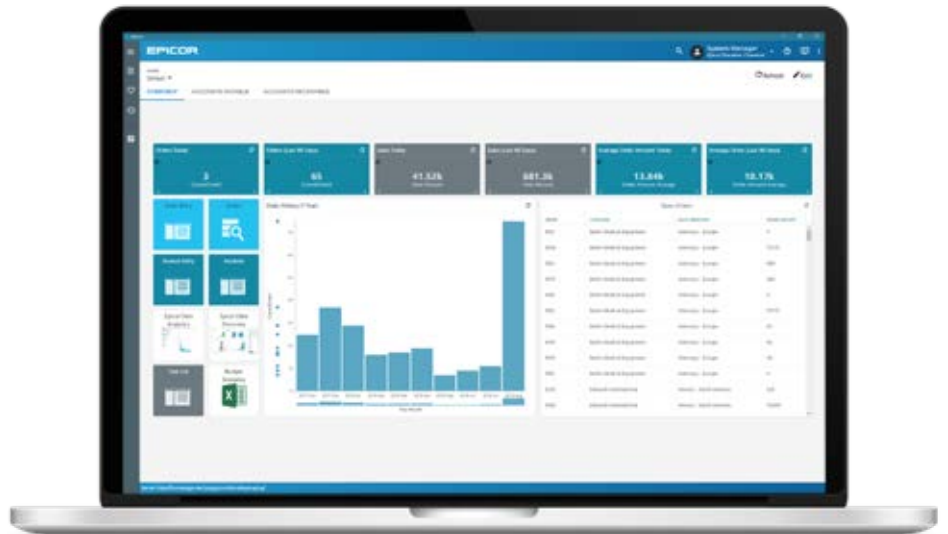
Active Home Page for Epicor ERP is an optional starting point for a user logging in and is where most users will first encounter EDD. A key component of the Epicor Kinetic Design System, Active Home Page contains quick access tiles for regularly used forms, links to other applications, and resizable EDD card views. Four configurable home pages are provided for these role types—executive, financial, manufacturing, and supply chain—and are populated with the appropriate favorites, EDD card views, IoT widgets, and other widgets that can be easily rearranged and resized on the page. Additionally, the “Discovery Dashboard” widget adds an EDD BI Dashboard as a tab in Active Home Page. You can also create custom EDD views and BAQ grids from system BAQs or your own BAQs and add them to your Active Home Page. The easy accessibility of EDD from Active Home Page will promote data-driven decisions in your business.

Typical Usage Stories

“I want to see the ratio of jobs with scrap/rework/nonconformance reported versus jobs with no scrap/rework/nonconformance reported. I want to be able to see this by part number for a user-defined date range. If the user does not choose a part, then all jobs in the time frame should be included.”

—Production Manager

Answer: EDD percentage of jobs without scrap or nonconformance metric

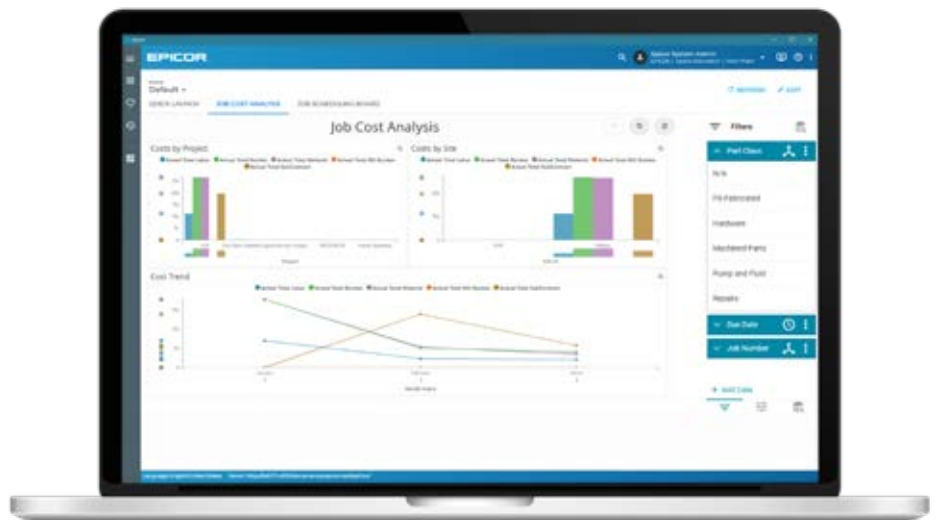


Custom EDD views and BAQ grids can be added to Active Home Page.

“I need to be able to quickly review—in a KPI—the total count and amount of all overdue AR invoices. I will need to be able to drill into the KPI and see all of the customers that have invoices past due and what the total amount overdue is for each of the customers. I should be able to drill further and see which invoices make up the total amount overdue for each customer and—for each invoice—review how many days overdue it is.”

—Collections Manager

Answer: EDD outstanding receivables metric



Discovery Dashboard widget added as a tab in Active Home Page.

“I need to be able to see the number of quotes won versus the number of quotes lost within a rolling six-month time period. I also need to see the velocity of the wins and losses, as well as a Pareto analysis of wins and losses. I also need to see the value of these quotes based on the expected value.”

—Sales Manager

Answer: EDD quote win/loss analysis metric

EDD Advanced

EDD connects to Epicor ERP BAQs and External BAQs. EDD Advanced allows customers to connect EDD to outside data sources—most notably to multidimensional cubes they have created in Microsoft SQL Server Analysis Services. This allows the EDD BI Dashboard to be populated with both Epicor ERP and external data sources with shared dimensions and cross filters. EDD Advanced also allows log-ins to EDD to be set up outside of the ERP system via Azure Active Directory or local Active Directory with data-level security set by role. Epicor ERP users can still log in to EDD via Epicor ERP login.

Image Overlay

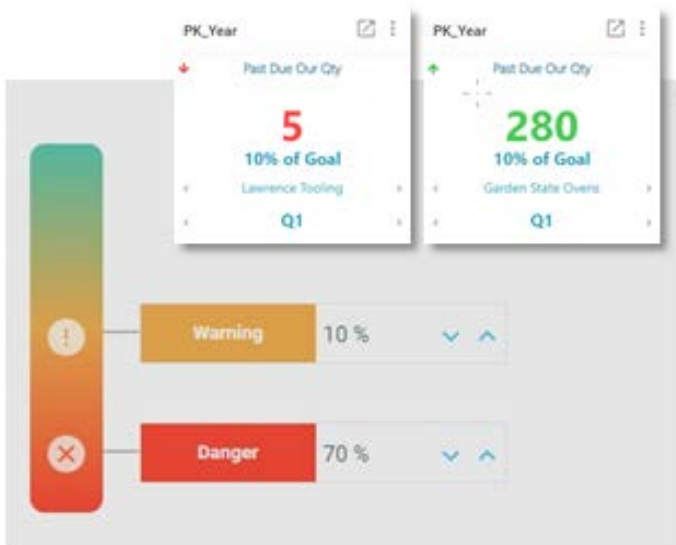
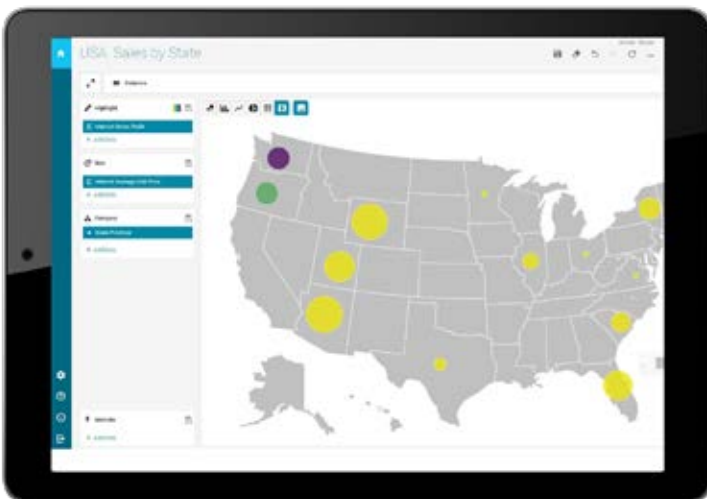
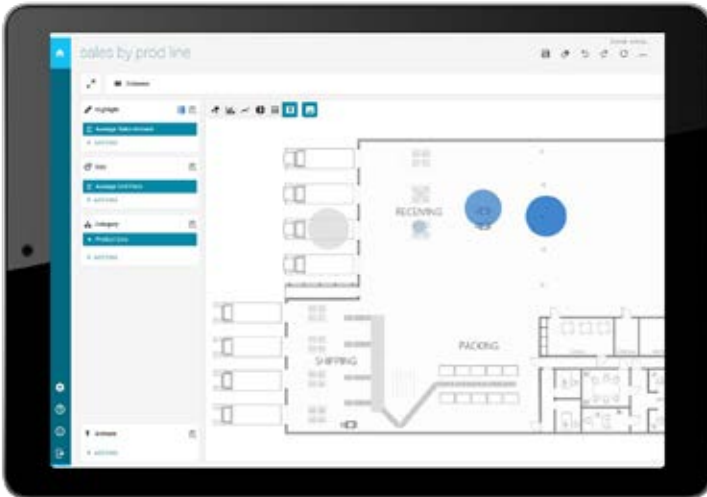
We all love maps. They provide orientation. They give us a context for the data we are using, they relate most closely to our real-life experience, and they are beautiful to look at. Now an image can act as a background in an EDD Advanced visualization, with data points placed in context on the image. Imagine being able to see a map of your country or the world, with data points displaying information in different provinces or states, or a map of your plant floor as shown. Or an image of a machine, with data points related to sensor placement on the machine. Data points on these maps can simultaneously display data in two categories (dimensions) via size and color, and your users can drill down for more information. This map-based enhancement is sure to engage your users more than any other chart type and promote their use of real-time analytics for increased reactive productivity.

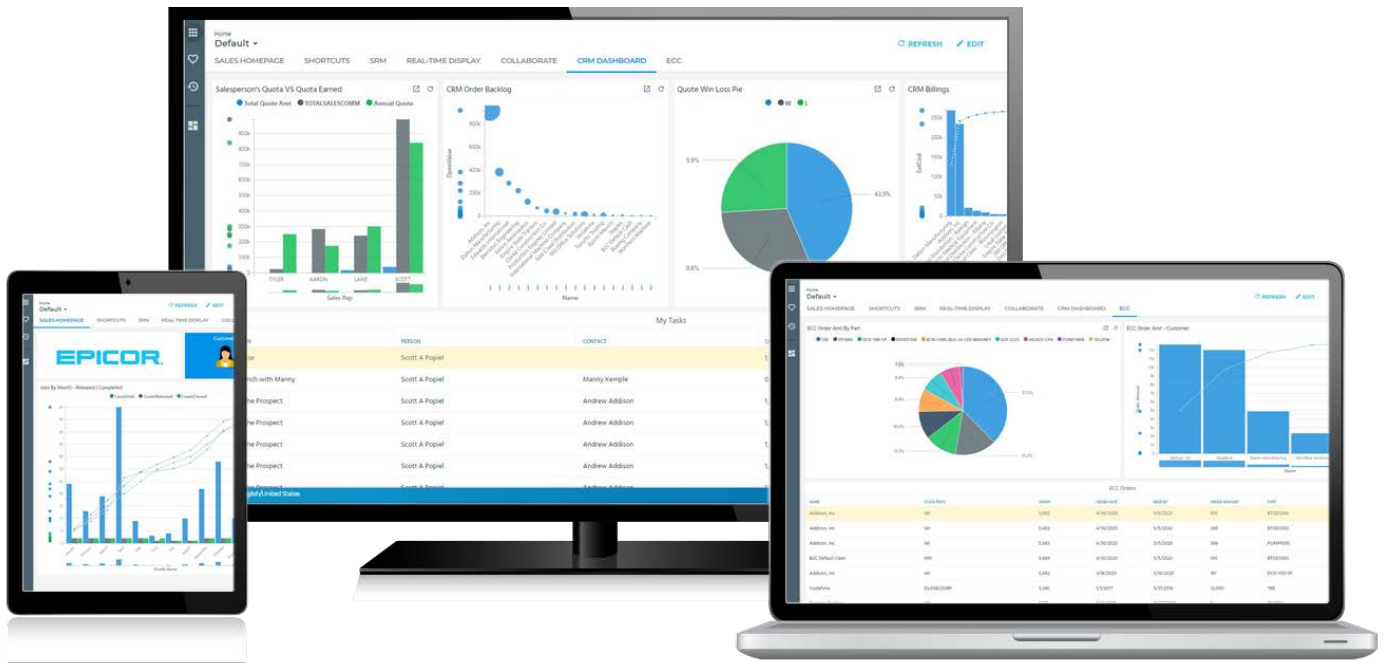
Key Performance Indicators (KPIs)

Visually rich, color-coded and intuitive KPI tiles and dashboards can be created in minutes with this new enhancement in EDD Advanced. This expands the KPI feature—first introduced with Epicor IoT widgets in Epicor ERP version release 10.2.400—to your other real-time data. The stoplight approach's greatest strength is its intuitive logic. Your organization sets the goals or operating parameters and then managers can see problems (or achievements!) at a glance and drill down into what requires their immediate attention, in real-time.

Requirements

- ▶ EDD is included in the Core packages of Epicor ERP Versions 10.2.100 and higher
- ▶ EDD Advanced is an additional license or SaaS subscription available for Epicor ERP Versions 10.2.300 and higher
- ▶ Discovery Dashboard widgets and IoT widgets are available in Epicor ERP Versions 10.2.400 and higher
- ▶ To view EDD IoT content, a license or SaaS subscription for Epicor IoT is required
- ▶ EDD Advanced Image Overlay and KPI's require Epicor ERP Versions 10.2.600 and higher





Learn More

Discover how Epicor Data Discovery can deliver fresh insight into your business to empower decision makers throughout your organization.

Contact your Encompass sales representative, call 1-336-617-4556, or visit www.encompass-inc.com.

About Encompass

Encompass Solutions is a business and software consulting firm that specializes in ERP systems, EDI, and Managed Services support for Manufacturers and Distributors. Serving small and medium-sized businesses since 2001, Encompass has helped modernize operations and automate processes for hundreds of customers across the globe. Whether undertaking full-scale implementation, integration, and renovation of existing systems, Encompass provides a specialized approach to every client's needs. By identifying customer requirements and addressing them with the right solutions, we ensure our clients are equipped to match the pace of Industry.

en>compass

Contact us today [✉ info@encompass-inc.com](mailto:info@encompass-inc.com) www.encompass-inc.com

The contents of this document are for informational purposes only and are subject to change without notice. Epicor Software Corporation makes no guarantee, representations, or warranties with regard to the enclosed information and specifically disclaims, to the full extent of the law, any applicable implied warranties, such as fitness for a particular purpose, merchantability, satisfactory quality, or reasonable skill and care. This document and its contents, including the viewpoints, testimonials, dates, and functional content expressed herein are believed to be accurate as of its date of publication, May 18, 2020. Use of Epicor products and services are subject to a master customer or similar agreement. Usage of the solution(s) described in this document with other Epicor software or third party products may require the purchase of licenses for such other products. Epicor and the Epicor logo are trademarks or registered trademarks of Epicor Software Corporation in the United States, and in certain other countries and/or the EU. Microsoft and Microsoft Azure are either registered trademarks or trademarks of Microsoft Corporation in the United States and/or other countries. Copyright © 2020 Epicor Software Corporation. All rights reserved.