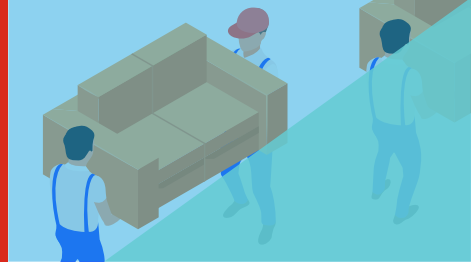


AIM | Asset Inventory Management



The way we work is changing, and the workplace has to follow suit! When you're returning to the workplace and finding that some furniture simply doesn't fit into your space's current needs, Asset Inventory Management (AIM) is the perfect solution.

Easy, Safe and Accessible Storage Solution!

24/7 Access to technology-driven storage solutions so you can easily manage assets.

Keep track of your furniture from afar with **up-to-date information** on the client portal.

Secure, controlled storage facilities to keep your pieces safely stored.

Store your things now to **save money, time, and headaches** later.

Create new space in your workplace by removing what you're not using.



Empower Employees Working From Home



Move ergonomic furniture from the workplace into employee's home offices!

Provide support and promote productivity.

Safely moved by our trained, in-house delivery and installation team.

Easily track and manage your assets with AIM's data-driven resources.