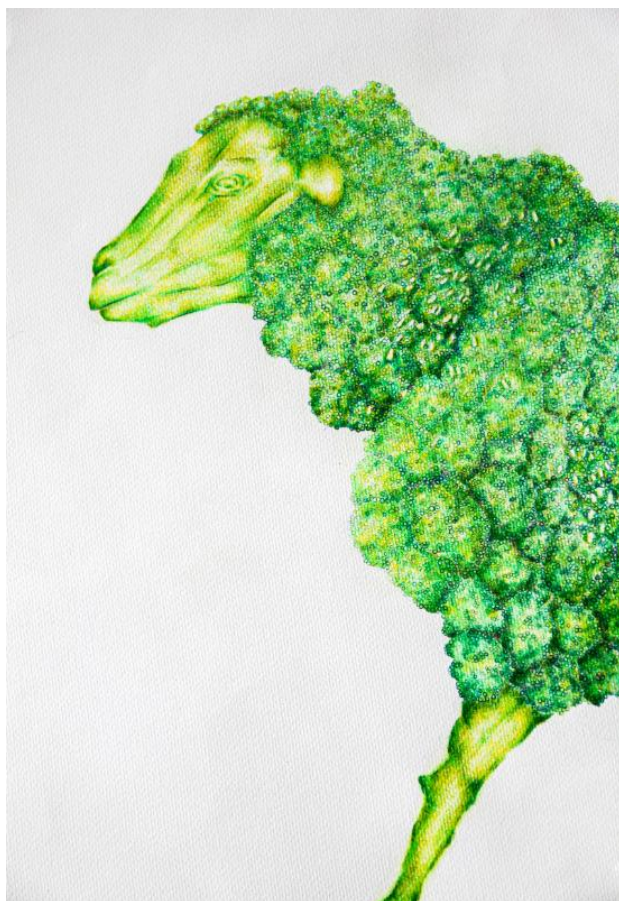




# **AP Drawing Portfolio**

Chieh-Ju Lu

2021



## Image 1

Sustained Investigation

**Height:** 27.8 inches

**Width:** 19.7 inches

**Material(s):** Prisma Colored Pencils on Paper

**Process(es):** Stippling patterns and vibrant greens create imaginative twist on plant based meat analogues.



## Image 2

Sustained Investigation

**Height:** N/A

**Width:** N/A

**Material(s):** Collection of reference images, experimental sketches, and process photos for S1.

**Process(es):** Experimented with ways of presenting sheep features through broccoli patterns and stem designs.



### Image 3

Sustained Investigation

**Height:** 10 inches

**Width:** 10 inches

**Material(s):** Prisma Colored Pencils on Paper

**Process(es):** Grotesque depiction of blood orange. Pulp replaced with cow flesh to reveal bloodshed.



### Image 4

Sustained Investigation

**Height:** 19.7 inches

**Width:** 27.8 inches

**Material(s):** Prisma Colored Pencils on Paper

**Process(es):** Overconsumption and food waste portrayed through piling of caterpillars, a distinct fear of mine.





## Image 5

Sustained Investigation

**Height:** N/A

**Width:** N/A

**Material(s):** Collection of cropped images, screenshots, and workstation photos revealing my process on Procreate.

**Process(es):** Reflection on the practicality of transitioning into digital-only pieces for my portfolio.



## Image 6

Sustained Investigation

**Height:** 10 inches

**Width:** 10 inches

**Material(s):** Digital Illustration, Procreate App on iPad

**Process(es):** Ironic interpretation of Valentine's Day. Juxtaposes love with consumerism and supply chain injustice



## Image 7

Sustained Investigation

**Height:** 10 inches

**Width:** 10 inches

**Material(s):** Digital Illustration, Procreate App on iPad

**Process(es):** Breakfast illusion exposes unhealthy perceptions of beauty through mark-making and texture building.



## Image 8

Sustained Investigation

**Height:** 11.8 inches

**Width:** 16.5 inches

**Material(s):** Digital Illustration, Procreate App on iPad

**Process(es):** Rotting colors and mold textures degrade The Happy Meal, revealing the dangers of fast food diets.





## Image 9

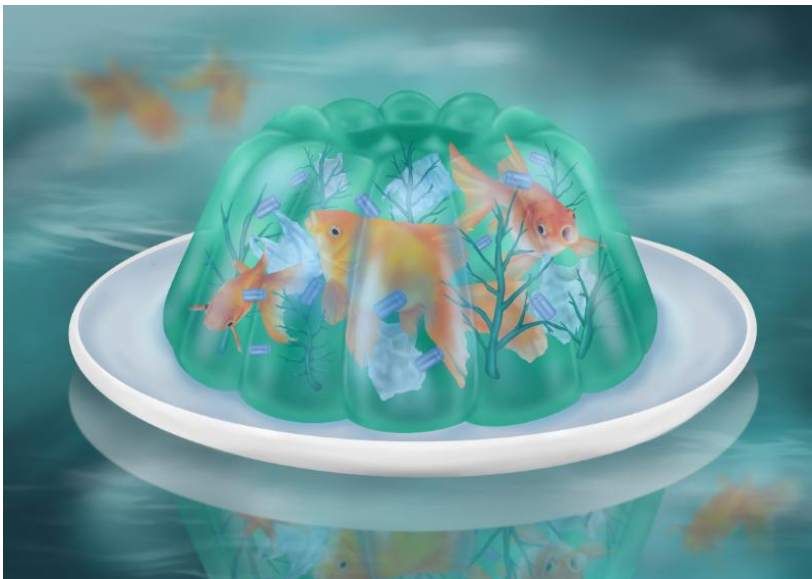
Sustained Investigation

**Height:** 10 inches

**Width:** 10 inches

**Material(s):** Digital Illustration, Procreate App on iPad

**Process(es):** Dot texture and artificial color scheme present a worried view on genetically modified organics.



## Image 10

Sustained Investigation

**Height:** 11.8 inches

**Width:** 16.5 inches

**Material(s):** Digital Illustration, Procreate App on iPad

**Process(es):** Horrors of plastic consumption are intensified through transparent solids and water reflections.



## Image 11

Sustained Investigation

**Height:** N/A

**Width:** N/A

**Material(s):** Collection of experimental and revisional sketches, reference material, and process photos for S10

**Process(es):** Drew connections between plastic and jello, revised background elements and adjusted color hues.



## Image 12

Sustained Investigation

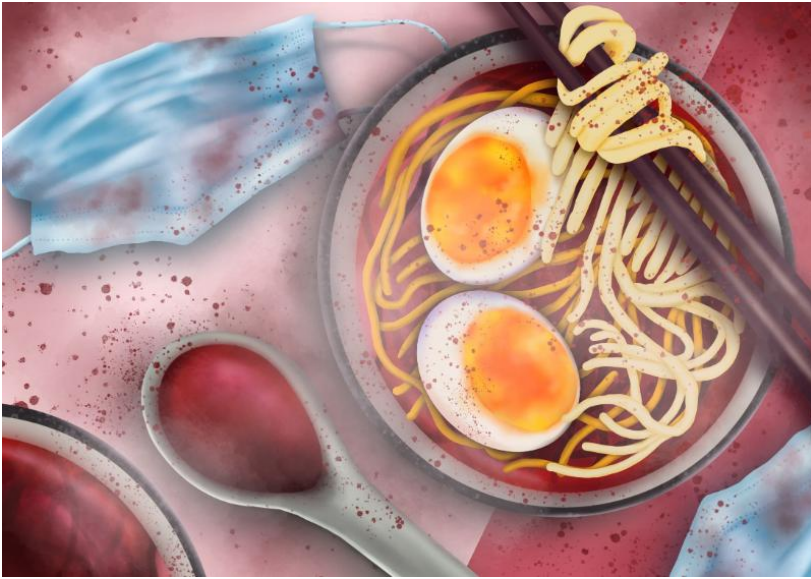
**Height:** 16.5 inches

**Width:** 11.8 inches

**Material(s):** Digital Illustration, Procreate App on iPad

**Process(es):** Lighting and polychromatic color scheme illuminate an alarmingly addictive form of consumption.





## Image 13

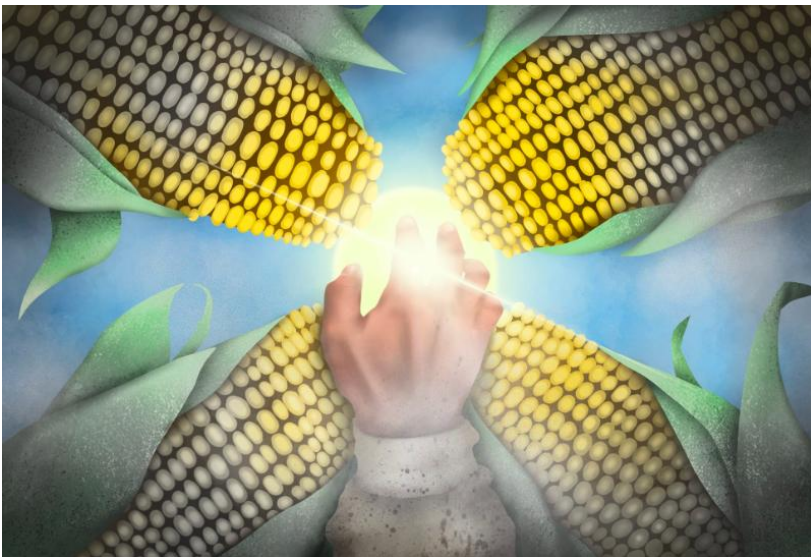
Sustained Investigation

**Height:** 11.8 inches

**Width:** 16.5 inches

**Material(s):** Digital Illustration, Procreate App on iPad

**Process(es):** Asian hate narratives represented through a symbolic meal. Elements of red amplify violent themes.



## Image 14

Sustained Investigation

**Height:** 11.8 inches

**Width:** 16.5 inches

**Material(s):** Digital Illustration, Procreate App on iPad

**Process(es):** Class inequality depicted through a low angle view of corns, which model modern skyscrapers.





## Image 15

Sustained Investigation

**Height:** 10 inches

**Width:** 10 inches

**Material(s):** Digital Illustration, Procreate App on iPad

**Process(es):** Desaturation and low angle of view combine to reveal environmental implications of meat consumption.

## Written Evidence

Sustained Investigation

**Identify the question(s) or inquiry that guided your sustained investigation.**

**Describe how your sustained investigation shows evidence of practice, experimentation, and revision guided by your question(s) or inquiry.**

### Response:

Indulging in food is never just about satisfying hunger. In my sustained investigation, I explore underlying problems that we, as humans, create through our consumption habits.

Beginning the process, I intended to focus specifically on meat consumption. With slides 1-3, I used color pencil to rethink the trajectory of human diets, highlighting plant alternatives and animal slaughter. However, as I continued to research and reflect about these concepts, I realized that food—at large—is emblematic of many other contemporary issues. As such, I revised and broadened my investigation on consumption, exploring issues such as consumerism (6), addiction (12), and inequality (13, 14) through various “meals”. Evolving into a full menu, my sustained investigation found its focus by exploring how food can symbolize societal concerns. As I gained more competence with digital software, I designed brush types to elevate elements like mold (8), reflection (10), and blood (13), shifting from comic-like strokes to a smoother style. While each piece distinguishes itself with its own meal, the portfolio as a whole reveals a nuanced exploration of pressing consumption issues.



## Work 1

Selected Works

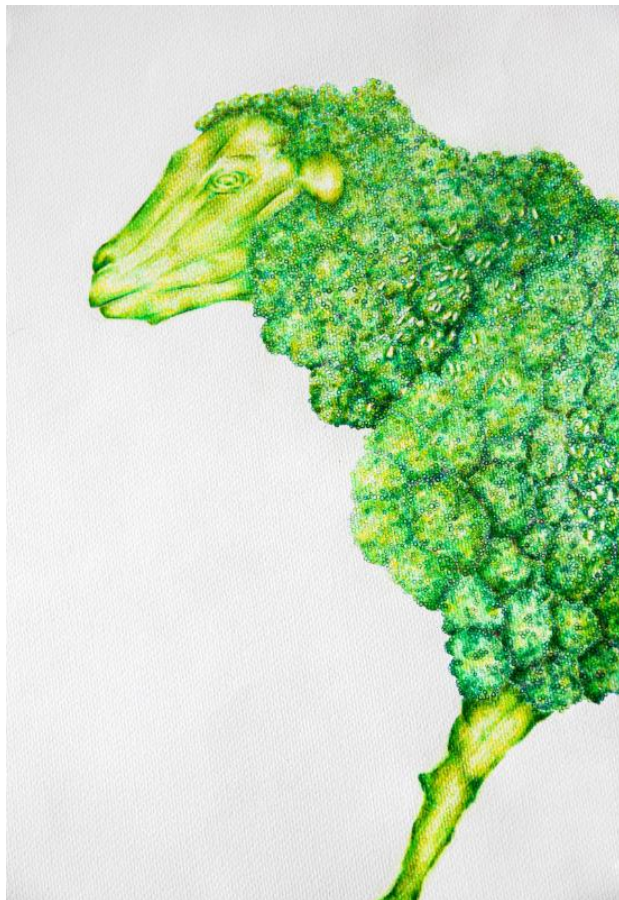
**Height:** 19.7 inches

**Width:** 27.8 inches

**Idea(s):** A shoal of fish stare cautiously at the viewer, fearful of getting captured.

**Material(s):** Sakura Ink Pen and Prisma Colored Pencil on Paper

**Process(es):** Fading colors and stippling patterns emphasize conflicts between the beauty and endangerment of fish



## Work 2

Selected Works

**Height:** 27.8 inches

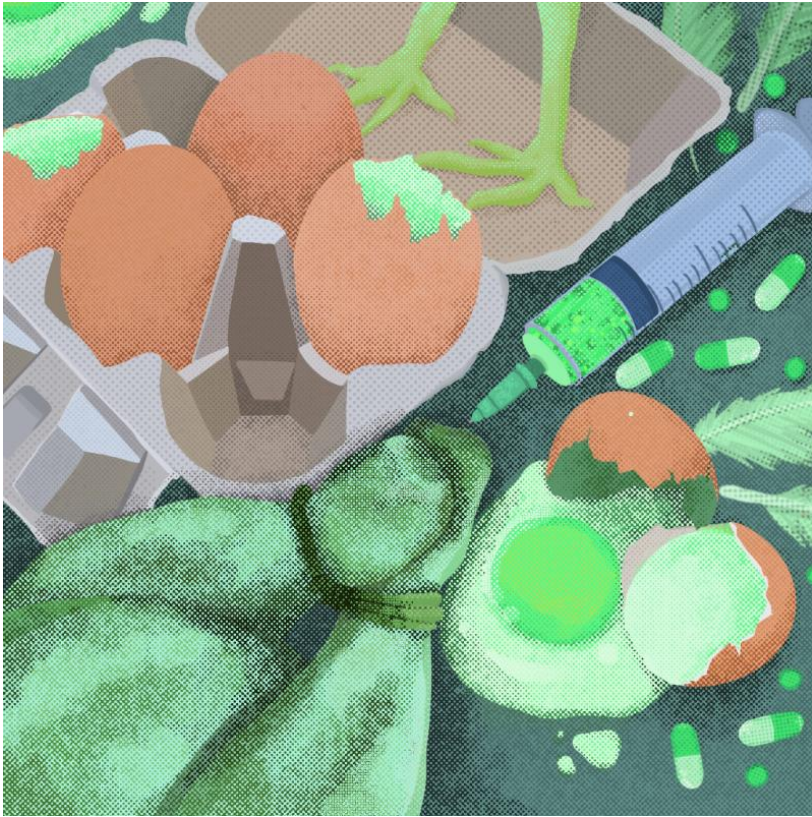
**Width:** 19.7 inches

**Idea(s):** Broccoli heads and stems reshape into a sheep, playing an imaginative twist on plant based meat.

**Material(s):** Prisma Colored Pencil on Paper

**Process(es):** Vibrant green hues and circular patterns blend visual elements of sheep and broccoli together.





### Work 3

Selected Works

**Height:** 10 inches

**Width:** 10 inches

**Idea(s):** Unprecedented growth in poultry production is accomplished through dangerous chemical methods.

**Material(s):** Digital Illustration, Procreate App on iPad

**Process(es):** Disorderly composition, dot textures, and green hues exaggerate chaotic, artificial themes.



### Work 4

Selected Works

**Height:** 10 inches

**Width:** 10 inches

**Idea(s):** Traces of consumerism and supply chain injustice underly a joyous celebration of Valentines Day.

**Material(s):** Digital Illustration, Procreate App on iPad

**Process(es):** Scattered, frowning bears juxtapose the joys created by warm colors and gentle, comic-like strokes.



## Work 5

Selected Works

**Height:** 11.8 inches

**Width:** 16.5 inches

**Idea(s):** Fish are frozen alongside plastics in a polluted jello, revealing the cost of reckless consumption

**Material(s):** Digital Illustration, Procreate App on iPad

**Process(es):** Objects are composed in an inanimate state, amplifying elements of stillness created by reflections.