



AP 2-D Art and Design Portfolio

Hoi Kin Chan

2021

50 YEARS TO LIVE

CONCEPT, IDEA & RESEARCH

I reflect the cycle of life. The time we have on earth may seem long, but when you look back, things seem to have only happened yesterday. In the time of many including mine, we'll have moments when we don't make full use of our time. What if we only had 50 years or perhaps even shorter to live, how would your lifestyle change?



ARTIST RESEARCH

Kristopher Ho

The Leap (2018)

Kristopher Ho mainly used lines in this artwork to show the flow, direction, shape, form, and lighting of his artwork.



Oneirocritica

The man K2 (2016)

The character from his tree trunk series always has a part of a tree stuck on his head. I can't help but to think that he is trying to tell through the wood. I feel like this is very interesting. Perhaps I can also do something with a person's and symbolism.

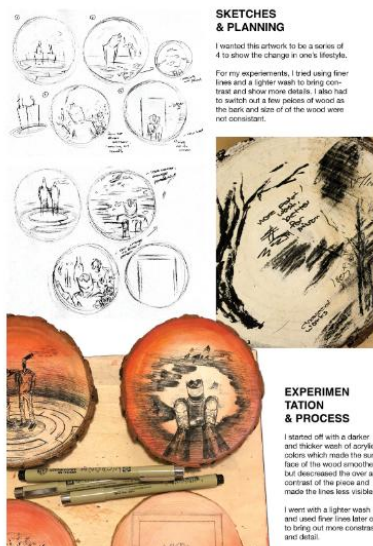


Image 1

Sustained Investigation

Height: N/A

Width: N/A

Material(s): process page with concept, research, ideas, inspiration, and progress for 50 YEARS TO LIVE.

Process(es): Reflected on the cycle of life. Research on style and use of symbolism. Marks made with micron pen.

Image 2

Sustained Investigation

Height: 4 inches

Width: 4 inches

Material(s): 50 YEARS TO LIVE. Sakura micron pens, acrylic paint, and brush pen on wood slices.

Process(es): Applied Acrylic wash and ink on wood base to show the realization and change from living recklessly.



BAO PINGAN POP-UP CARD

CONCEPT & IDEA

The biggest problem we faced this year was COVID-19. That created a slew of problems, one of them being family segregation. I was lucky enough to be with my family, but a lot of people are separated because of the pandemic.



ARTIST RESEARCH

Kalogsopoulos
A Moment of Rest
(2019)
I inspired by the rich color and watercolor texture Kalogsopoulos created in his painting.



Image 3

Sustained Investigation

Height: N/A

Width: N/A

Material(s): process page with concept, research, ideas, inspiration, and progress for BAO PINGAN POP-UP CARDS.

Process(es): Researched about cultural symbolism. Developed understanding on layers in pop-up cards.

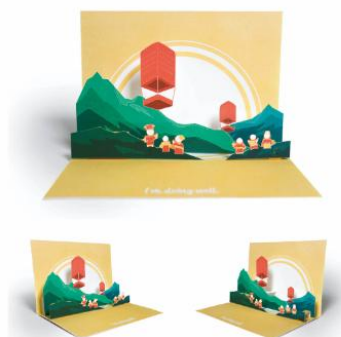


Image 4

Sustained Investigation

Height: 5.8 inches

Width: 8.2 inches

Material(s): BAO PINGAN CARDS - UNDER THE SAME SKY. Adobe Illustrator/Photoshop, digital print.

Process(es): Use of color and symbols to bring out Chinese culture and the meaning: family and health.

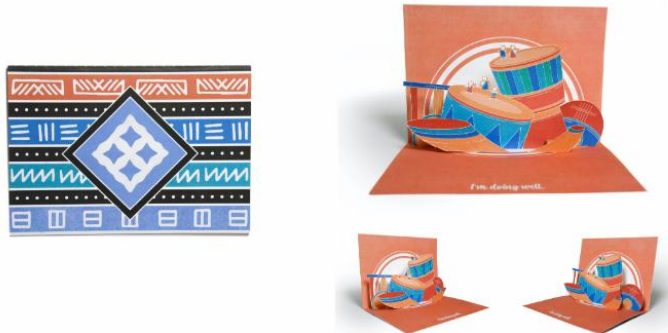


Image 5

Sustained Investigation

Height: 5.8 inches

Width: 8.2 inches

Material(s): BAO PINGAN CARDS - EBAN. Adobe Illustrator/Photoshop, digital print.

Process(es): Use of color and symbols to bring out African culture and the meaning: safety, love, and security.

THE LOSS OF CHILDHOOD

One day the innocence of childhood will eventually fade away. Looking back at my childhood, there were a lot of shows that I just laughed off, but most actually had deeper meanings behind them. The inspiration of this piece was from the movie "Spinal Tap". As I started to lose my innocence as I matured, I began to see this movie in a different way - seeing the symbols and ideas this movie is trying to bring forth. That was when I realized that I've "lost my childhood". My style of my artwork was inspired by James Jean's use of thin outlines, textures, and the use of colors to convey a certain meaning behind the artwork.



Image 6

Sustained Investigation

Height: N/A

Width: N/A

Material(s): process page with concept, research, ideas, inspiration, and progress for LOSS OF CHILDHOOD.

Process(es): Tried out/practiced with different perspectives and and the use of symbolism through sketching.

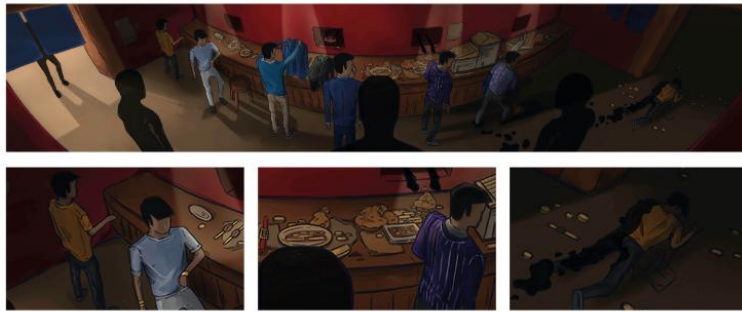


Image 7

Sustained Investigation

Height: 23.6 inches

Width: 118 inches

Material(s): LOSS OF CHILDHOOD - CONSEQUENCE OF GREED. Adobe Photoshop, Wacom Cintiq Pro 13, digital.

Process(es): Progression and consequence of greed shown through the use of layers, digital lighting, and figures.



Image 8

Sustained Investigation

Height: 7.8 inches

Width: 7.8 inches

Material(s): SHINE A LIGHT. Adobe Illustrator, wood for laser cutting, laser cutter, uhu glue, light bulb/stand.

Process(es): Use of open form within the laser cut to show a reflection of the high school journey and worries.





Image 9

Sustained Investigation

Height: 16.5 inches

Width: 11.7 inches

Material(s): WITHERING. Charcoal, acrylic paint, tissue paper, white glue on drawing paper.

Process(es): Colors combined with textures to show environmental issues, such as forest fires with charcoal marks



Image 10

Sustained Investigation

Height: 16.5 inches

Width: 11.7 inches

Material(s): STUMP. Adobe Photoshop, Adobe Illustrator, Wacom Cintiq Pro 13, digital.

Process(es): Combination/use of shapes, symbolism, and desaturated colors to bring out the topic of deforestation

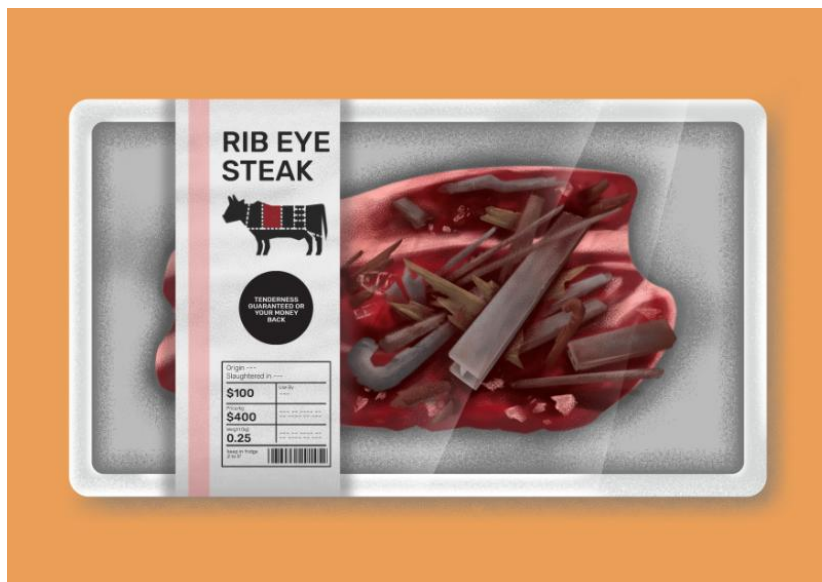


Image 11

Sustained Investigation

Height: 11.7 inches

Width: 16.5 inches

Material(s): YOU ARE WHAT YOU EAT. Adobe Photoshop, Wacom Cintiq Pro 13, digital.

Process(es): Use of texture and colors to show that harming the environment will ultimately harm ourselves.

WHAT THEY NEED THE MOST

There are a lot of issues that come with poverty. I focused on medical and health issues as it is the prevailing issue that leads to other problems caused by the reduced living conditions of poverty. I decided to go with a series of mail boxes for people to leave supplies (support), and animals that look like volunteer supporters that are willing to help. I started off with hands, but I thought that the idea of using animals would be more symbolic. The main purpose of these artworks was for me to spread awareness by advocating for those in need. I took inspiration from Eagle Flytbrate and Tomasz Wozniakowski's simple yet effective artworks that rely on the use of symbolism.



Image 12

Sustained Investigation

Height: N/A

Width: N/A

Material(s): process page with concept, research, ideas, inspiration, and progress for WHAT THEY NEED THE MOST.

Process(es): Research on symbolism through objects/subjects. Brainstorm on topic. Digital experimentation.



Image 13

Sustained Investigation

Height: 16.5 inches

Width: 11.7 inches

Material(s): WHAT THEY NEED THE MOST 1. Adobe Photoshop, Wacom Cintiq Pro 13, digital.

Process(es): Combination of symbolism and color to spread awareness: Health issues found in impoverished areas.

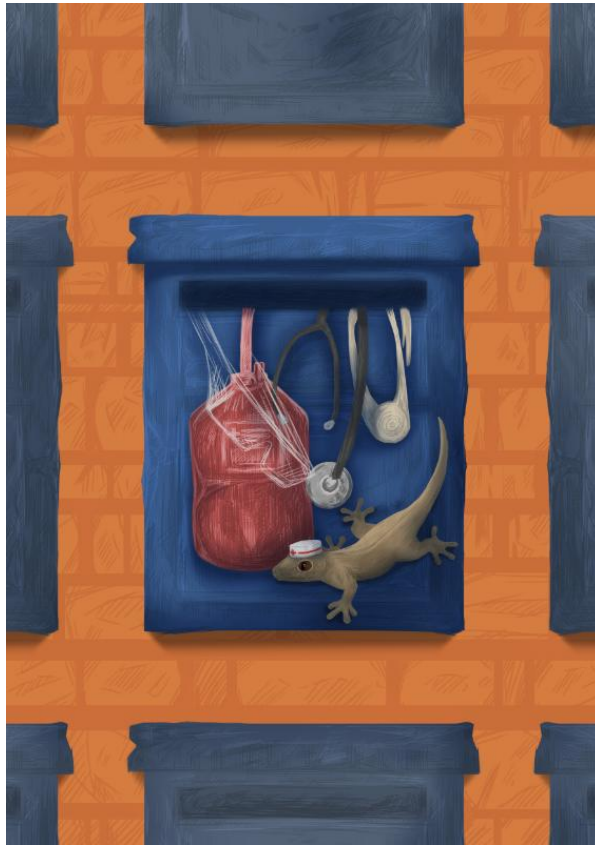


Image 14

Sustained Investigation

Height: 16.5 inches

Width: 11.7 inches

Material(s): WHAT THEY NEED THE MOST 2. Adobe Photoshop, Wacom Cintiq Pro 13, digital.

Process(es): Emphasis created with complementary colors to bring out the topic of health issues for those in need



Image 15

Sustained Investigation

Height: 16.5 inches

Width: 11.7 inches

Material(s): WHAT THEY NEED THE MOST 3. Adobe Photoshop, Wacom Cintiq Pro 13, digital.

Process(es): Rendering objects of compassion for medical needs through linear textural marks and brush strokes.

Written Evidence

Sustained Investigation

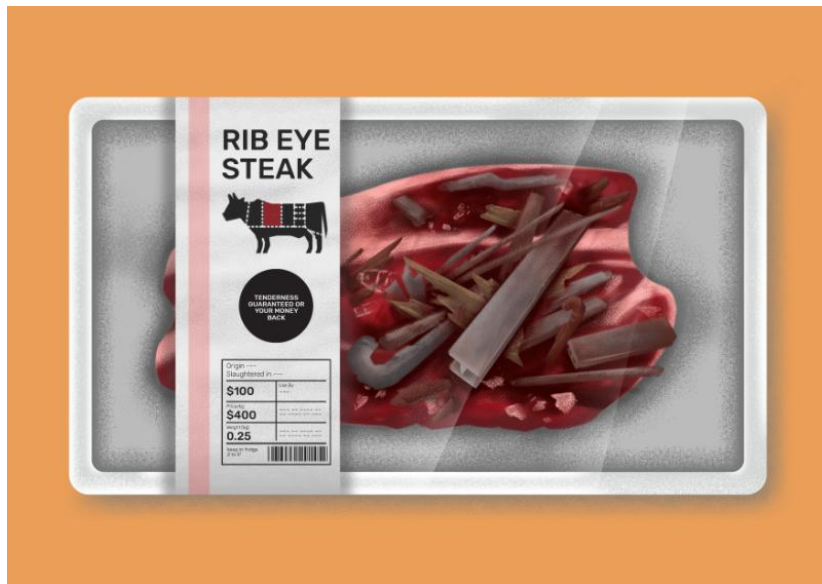
Identify the question(s) or inquiry that guided your sustained investigation.

Describe how your sustained investigation shows evidence of practice, experimentation, and revision guided by your question(s) or inquiry.

Response:

2020 was a year we did not expect. Regardless whether if it was societal, (S1-8), environmental (S3, 9-11), or health issues (S12-15) that we faced, our lives were changed to what we now call the "new normal".

How can I create pieces that show the struggles in the past year through a personal yet global lens? Becoming more aware of the issues and concerns surrounding me, I wanted to dive deeper – to understand, advocate, and spread awareness for the ongoing/prominent problems such as the pandemic, health crisis, personal struggles. I started off with traditional mediums such as charcoal and acrylic paint (S2, 9). Limitations quickly came because I exhausted my supplies during pandemic. I wanted to try something that is new and accessible at any time, so I moved to digital (S 13-15 were my first few digital pieces). As I experimented, practiced, and created more digital pieces, my skills improved (S10-11), and it also enabled me to try out things such as creating digital prints (S4-5) and laser cutting (S8), which wouldn't have been possible without digital art.



Work 1

Selected Works

Height: 11.7 inches

Width: 16.5 inches

Idea(s): Started with the concept of karma, which developed into: harming the environment will harm ourselves

Material(s): YOU ARE WHAT YOU EAT. Adobe Photoshop, Wacom Cintiq Pro 13, digital.

Process(es): Use of texture, combined with lighting and colors to give the over all piece a more realistic look.



Work 2

Selected Works

Height: 7.8 inches

Width: 7.8 inches

Idea(s): Concept developed from college apps and the stress/worries in high school, specially grades and apps

Material(s): SHINE A LIGHT. Adobe Illustrator, wood for laser cutting, laser cutter, uhu glue, light bulb/stand.

Process(es): Use of open form within the laser cut to show a reflection of the high school journey and worries.



Work 3

Selected Works

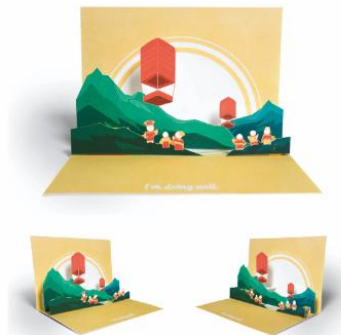
Height: 4 inches

Width: 4 inches

Idea(s): Reflected on the time i wasted during the pandemic. Wanted to tell others that it was not healthy.

Material(s): 50 YEARS TO LIVE. Sakura micron pens, acrylic paint, and brush pen on wood slices.

Process(es): Applied Acrylic wash and ink on wood base to show the realization and change from living recklessly.



Work 4

Selected Works

Height: 5.8 inches

Width: 8.2 inches

Idea(s): I wanted to create cards that connect people, friends and family, that got separated during COVID.

Material(s): BAO PINGAN CARDS - UNDER THE SAME SKY. Adobe Illustrator/Photoshop, digital print.

Process(es): Use of color and symbols to bring out Chinese culture and the meaning: family and health.



Work 5

Selected Works

Height: 16.5 inches

Width: 11.7 inches

Idea(s): Inspired by the rise of forest fires, and other negative environmental impacts in the past year.

Material(s): WITHERING. Charcoal, acrylic paint, tissue paper, white glue on drawing paper.

Process(es): Colors combined with textures to show environmental issues, such as forest fires with charcoal marks