



AP 2-D Art and Design Portfolio

Anita Feng

2021

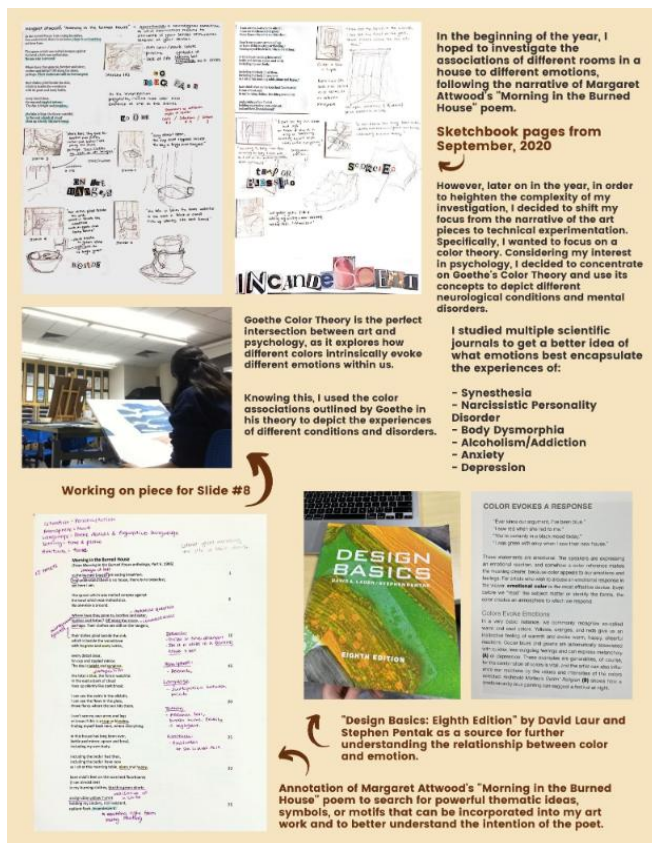


Image 1

Sustained Investigation

Height: N/A

Width: N/A

Material(s): Digital images and Adobe Illustrator to document ideation and revision process for investigation

Process(es): Documented research behind Goethe and shift in focus from narrative to technical experimentation

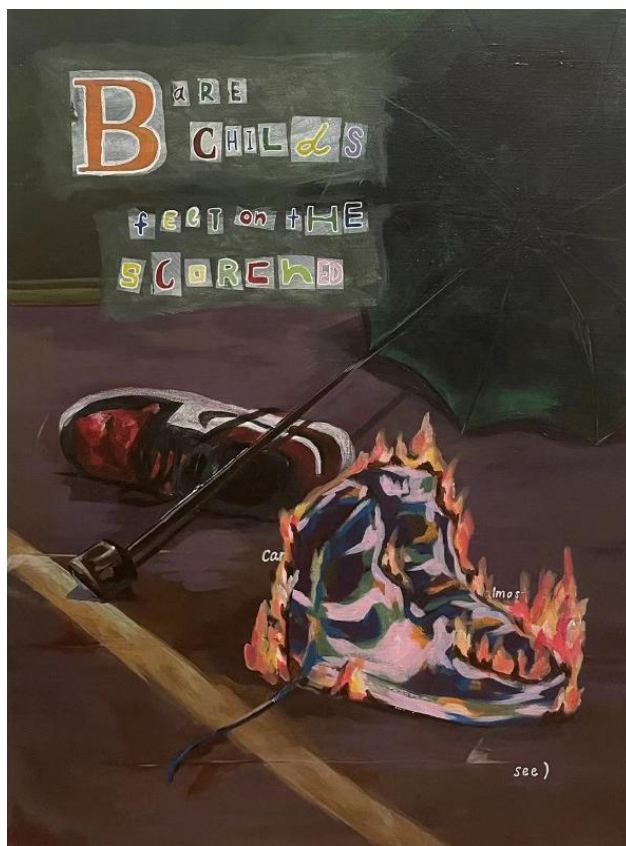


Image 2

Sustained Investigation

Height: 15.5 inches

Width: 11.8 inches

Material(s): Acrylic paint and white gel pen on stretch cotton painting canvas

Process(es): Abandonment theme from Atwood anthology explored through editorial composition and color choices

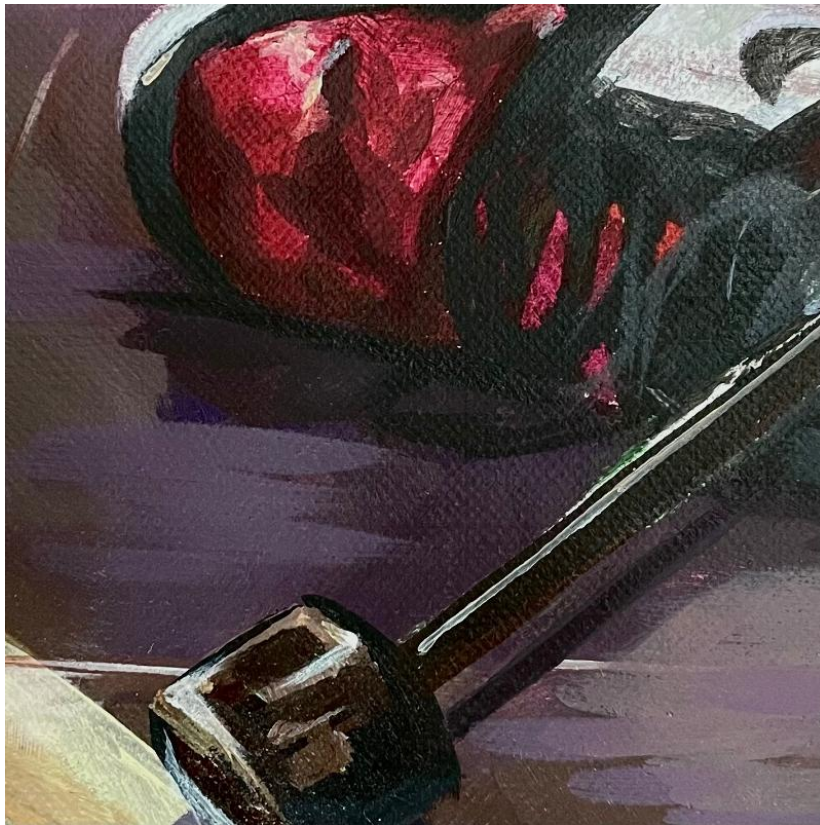


Image 3

Sustained Investigation

Height: N/A

Width: N/A

Material(s): Acrylic paint and white gel pen on stretch cotton painting canvas

Process(es): Strewn shoe and umbrella evoke neglect, heightened by deep yet subdued red, green, and purple shades

Margaret Atwood's "Morning in the Burned House"

including the body I had then,
including the body I have now
as I sit at this morning table, alone and happy,
bare child's feet on the scorched floorboards
(I can almost see)
~~my, swirling, clothes, the chili green shorts~~
and grubby yellow T-shirt
holding my cindery, non-existent,
radiant flesh. Incandescent.

How can I use color theory to visually represent the emotional and behavioral burdens of synaesthetics?

Themes: abandonment, childhood trauma, familial conflict

Research suggests that synaesthesia often triggers depression, anxiety, alexithymia and other symptoms of traumatic stress.

Synaesthetic Associations and Psychopathological Symptoms: Preliminary Evidence in Young Women

Color Palette:

According to Goethe's Color Theory:

Red - Gravity, dignity, attractiveness
Green - Stability, agreeableness
Blue - Contradiction between excitement and repose

The usage of green as the focal color mocks the lack of stability and agreeableness in the interpretation of the painting.

The hastily strewn shoes on the floorboards and the dry umbrella, left open on the floor, are reminiscent of feelings of abandonment.

Is there a burden attached to synaesthesia? (burden meaning of synaesthesia in the general population)

Image 4

Sustained Investigation

Height: N/A

Width: N/A

Material(s): Digital images and Adobe Illustrator to document inspiration, poetry analysis, research, and process

Process(es): Inquiring how to depict the burdens of synesthetes through an exploration of Goethe's color theory



Image 5

Sustained Investigation

Height: 22.8 inches

Width: 15.4 inches

Material(s): Acrylic paint on stretch cotton painting canvas

Process(es): Ethereal color and markmaking demands admiration, reminiscent of narcissistic personality disorder



Image 6

Sustained Investigation

Height: 22.8 inches

Width: 15.4 inches

Material(s): Acrylic paint on stretch cotton painting canvas

Process(es): Demanding colors in mirror against cool background symbolizes anxiety when looking at reflection

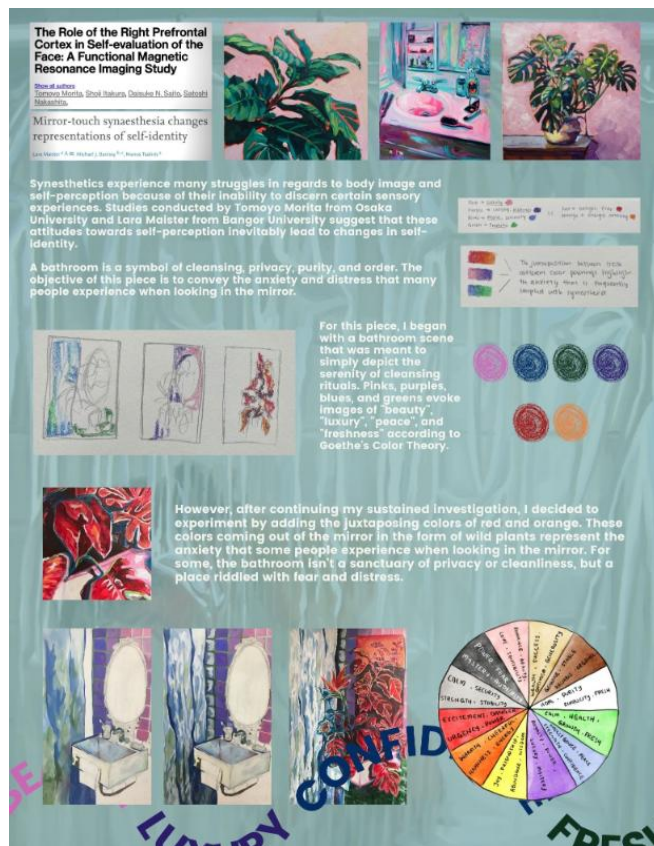


Image 7

Sustained Investigation

Height: N/A

Width: N/A

Material(s): Digital images and Adobe Illustrator to document inspiration, research, ideation, and process

Process(es): Exploring intersection between sensory and body disorders through psychological research and color



Image 8

Sustained Investigation

Height: 31.5 inches

Width: 31.5 inches

Material(s): Acrylic paint on stretch cotton painting canvas

Process(es): Expressive markmaking and juxtaposing color choices depict the devitalizing struggles of alcoholism



Image 9

Sustained Investigation

Height: N/A

Width: N/A

Material(s): Digital images and Adobe Illustrator to document revision of old piece and experimentation

Process(es): Experimentation with color and texture to challenge themes of original piece and introduce new ones



Image 10

Sustained Investigation

Height: 15.4 inches

Width: 22.8 inches

Material(s): Acrylic paint on stretch cotton painting canvas

Process(es): Unconventional yet vivid color palette reflects overwhelming and paralyzing nature of depression

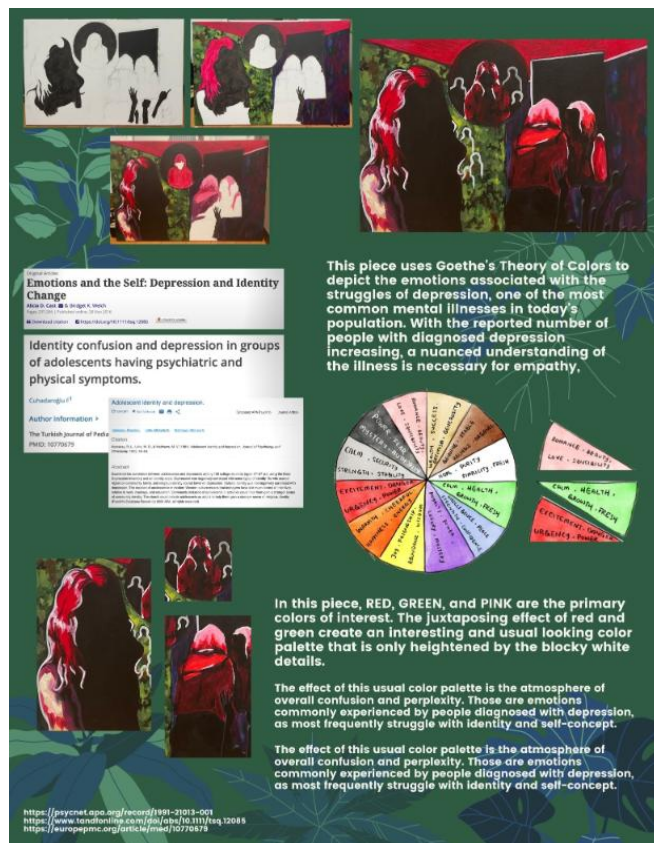


Image 11

Sustained Investigation

Height: N/A

Width: N/A

Material(s): Digital images and Adobe Illustrator to document research, justification of color, and process

Process(es): Selection of color through Goethe Theory of Color and the examination of research on depression



Image 12

Sustained Investigation

Height: 11.8 inches

Width: 15.5 inches

Material(s): Acrylic paint on stretch cotton painting canvas

Process(es): Colors and elements of magical realism create psychedelic atmosphere to mimic hallucinogen addiction

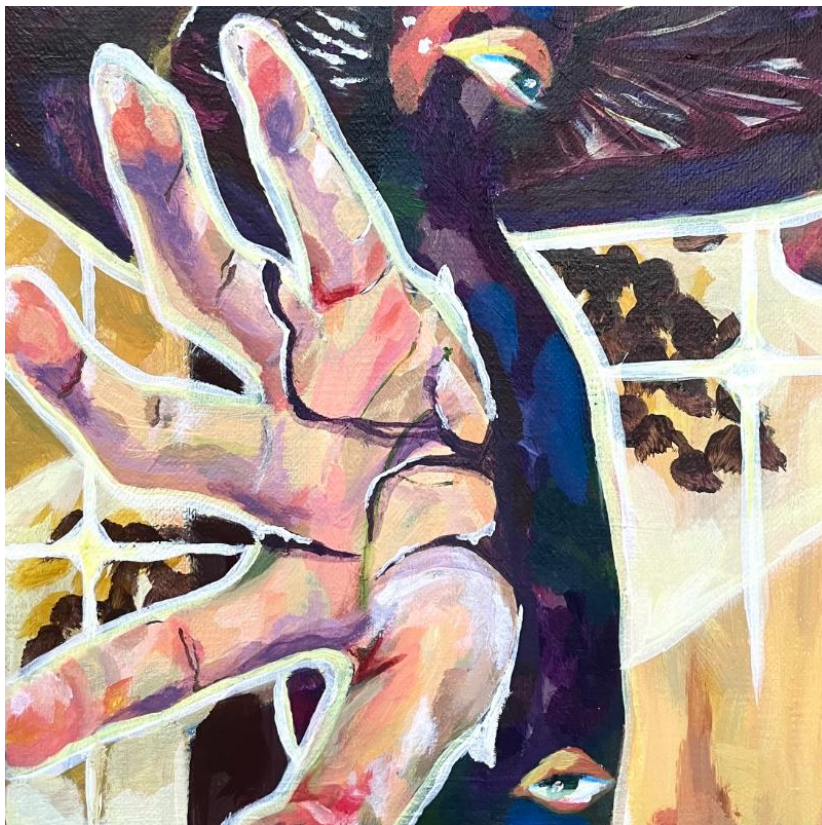


Image 13

Sustained Investigation

Height: N/A

Width: N/A

Material(s): Acrylic paint on stretch cotton painting canvas

Process(es): Zombie-like projections from mushrooms represent all-consuming and debilitating nature of addiction



Image 14

Sustained Investigation

Height: 31.5 inches

Width: 31.5 inches

Material(s): Acrylic paint on stretch cotton painting canvas, white gel pen

Process(es): Dreamy atmosphere created by natural imagery and colors reimagine anxiety into something gossamery



Image 15

Sustained Investigation

Height: N/A

Width: N/A

Material(s): Digital images and Adobe Illustrator to document inspiration, ideation, and justification of color

Process(es): Exploring unrealistic standards for women through color, anxiety is compared to a prison structure

Written Evidence

Sustained Investigation

Identify the question(s) or inquiry that guided your sustained investigation.

Describe how your sustained investigation shows evidence of practice, experimentation, and revision guided by your question(s) or inquiry.

Response:

In my investigation, I inquire how colors manifest emotions in their most vulnerable form, with a focus on depicting mental illnesses and neurological conditions. Through an in-depth exploration of Goethe's Color Theory, I illustrate the nuanced experiences of synesthesia, body dysmorphia, addiction, and more.

My inquiry unfolds as I investigate the emotions associated with sensory disorders through thorough online research. By referencing the emotions outlined in scientific journals to the emotions associated with colors on Goethe's Color Wheel, I devise the color palette for each piece (Slides #1-#5). Goethe's Theory of Colors is frequently overlooked by traditional art curriculums for its scientific nature. By drawing attention to this color wheel, I hope to encourage the ongoing exploration of an intersection between art and science. By Slide #6, there is a shift in focus as I gravitate away from a formulaic approach to one that is experimental and inclusive of all disorders, not just sensory. This turning point broadens the horizon of possible disorders to depict and sees a change in technique and complexity, as the role of color shifts from a device to a symbol itself.



Work 1

Selected Works

Height: 22.8 inches

Width: 15.4 inches

Idea(s): Celestial, hyper-glorified overtone of the piece resembles the self-perception of a narcissist

Material(s): Acrylic paint on stretch cotton painting canvas

Process(es): Ethereal color and markmaking demands admiration, reminiscent of narcissistic personality disorder



Work 2

Selected Works

Height: 4.2 inches

Width: 23.5 inches

Idea(s): Capitalist society demands our attention through flashy advertising, perhaps to a profound fault

Material(s): Magazines, construction paper, X-Acto knife, glue

Process(es): Clippings from magazines to create a landscape where social constructs are advertised and for sale



Work 3

Selected Works

Height: 31.5 inches

Width: 31.5 inches

Idea(s): Piece for International Peace Day inspired by 20th century Fauvist art and my al fresco upbringing

Material(s): Acrylic paint on stretch cotton painting canvas

Process(es): Practice of complementary colors and expressive markmaking create an unexpected sense of serenity



Work 4

Selected Works

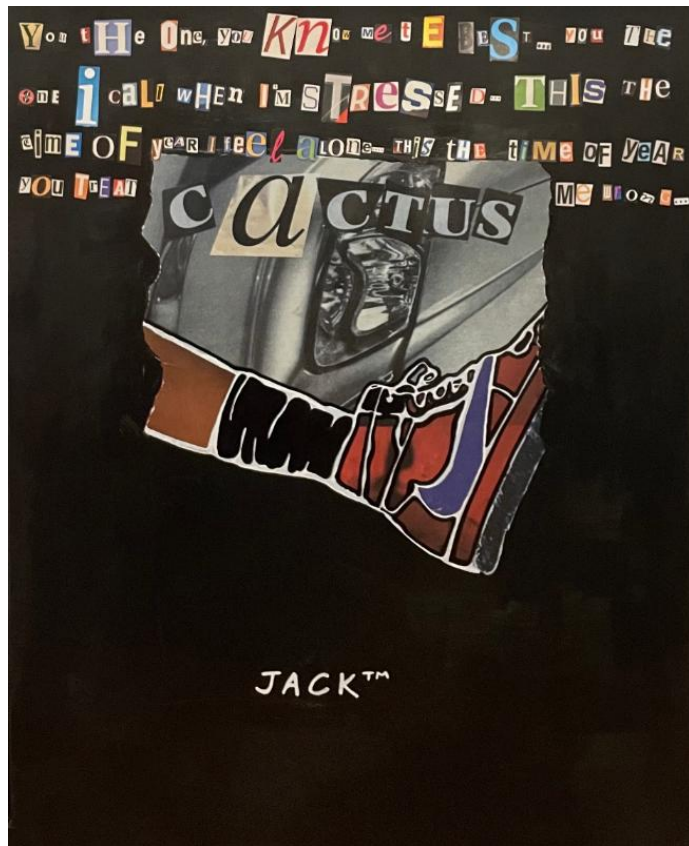
Height: 11.8 inches

Width: 15.5 inches

Idea(s): Eyes and hands manifest images of apocalypse and surveillance, evocative of the War on Drugs in USA

Material(s): Acrylic paint on stretch cotton painting canvas

Process(es): Colors and elements of magical realism create psychedelic atmosphere to mimic hallucinogen addiction



Work 5

Selected Works

Height: 23.6 inches

Width: 18.9 inches

Idea(s): Editorial and stylistic advertisement for brand, Cactus Jack, with lyrics from song of brand owner

Material(s): Magazines, Copic markers, white gel pen, X-acto knife, glue, scanner, printer, acrylic black paint

Process(es): Combined magazine and comic elements to create mock-up advertisement for Cactus Jack collection