



AP 2-D Art and Design Portfolio

Alisa Zheng

2021

OCEAN SKIES.



Image 1

Sustained Investigation

Height: N/A

Width: N/A

Material(s): Procreate, inspiration photos, my own photo.

Process(es): Inspiration by my own photographs and other artists. Combining the imagery for clouds and waves.



Image 2

Sustained Investigation

Height: 11.7 inches

Width: 8.25 inches

Material(s): OCEAN SKIES. What if the ocean was the sky? MediBang Paint Pro w/ Cintiq tablet and stylist.

Process(es): Detailed monochromatic background contrasted with the grayscale landscape emphasize the atypical sky

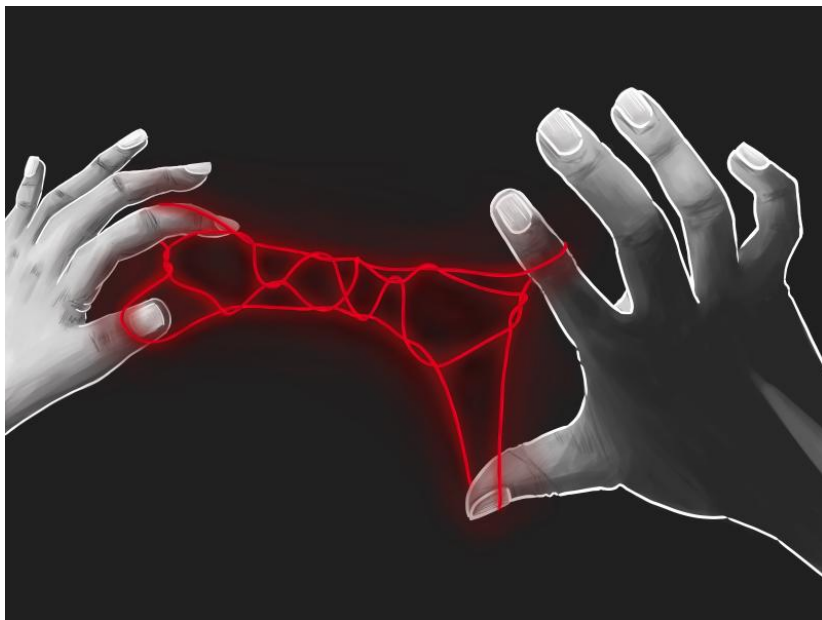


Image 3

Sustained Investigation

Height: 8.25 inches

Width: 11.7 inches

Material(s): YUANFEN. Give me control. Modern twist of The Three Fates and the string of life. MediBang PaintPro.

Process(es): Referencing myself. Juxtaposing eerie mythological story with childhood string game.



Image 4

Sustained Investigation

Height: N/A

Width: N/A

Material(s): Hanahaki: a fictional disease where flowers grow in the lungs from unrequited love. Procreate.

Process(es): Experimenting w/ typography, revision to a minimalistic style that utilizes color contrast.



Image 5

Sustained Investigation

Height: 21.3 inches

Width: 21.3 inches

Material(s): HANAHAKI. When will I finally be able to breathe? Procreate digital illustration.

Process(es): Paralleling Hanahaki to the suffocating emotions when feeling stressed.



Image 6

Sustained Investigation

Height: N/A

Width: N/A

Material(s): Block printing w/ Procreate. Creating my childhood dream of combining my two homes into one.

Process(es): Blueprint of Ottawa neighborhood w/ Shanghai street names. Overlaying prints, texture study.



Image 7

Sustained Investigation

Height: 8.25 inches

Width: 11.7 inches

Material(s): HOME IS HERE. Where is my true home?Block printing w/ black and silver ink, Procreate.

Process(es): Carving, block printing, and digital. Handwriting calligraphy and designing a newspaper-like layout.

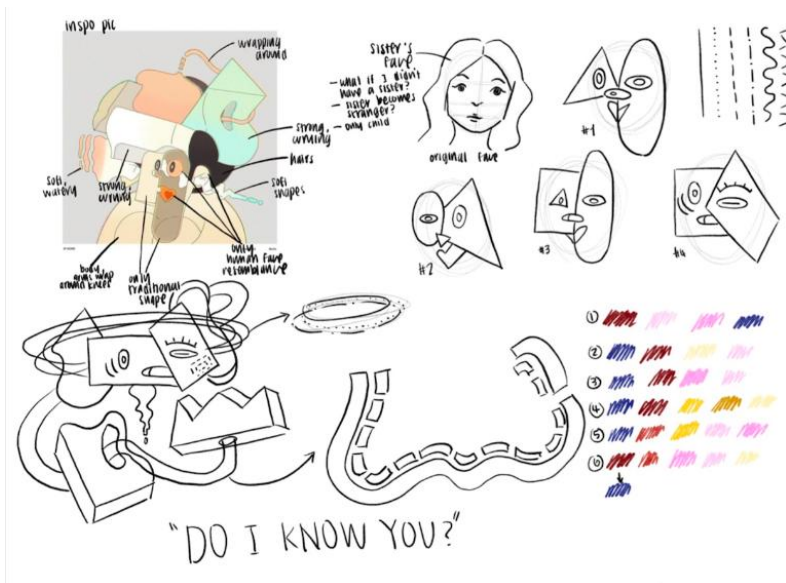


Image 8

Sustained Investigation

Height: N/A

Width: N/A

Material(s): Procreate, inspiration photo. Abstract version of my sister to express being unrecognizable.

Process(es): Study of anthropomorphic versions of the face and body. Adding curved shapes to cubism style.



Image 9

Sustained Investigation

Height: 16.5 inches

Width: 11.8 inches

Material(s): DO I KNOW YOU?
Prismacolor pencils, 0.4 and 0.8 tip
black Sakura pens on 300lb
watercolor paper.

Process(es): Unusual shapes,
patterns, and details brought
together by cool color scheme of
blue, pink, purple.

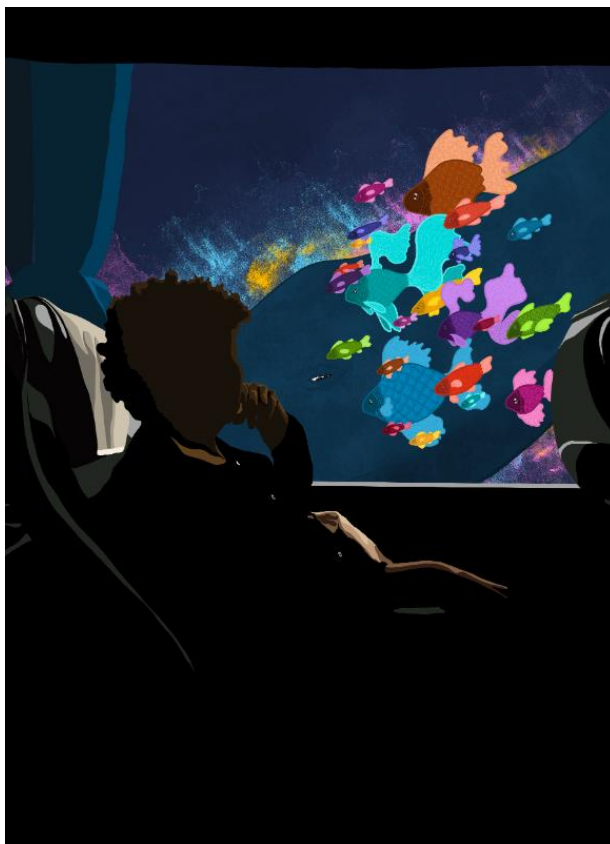


Image 10

Sustained Investigation

Height: 16.5 inches

Width: 11.7 inches

Material(s): Portraying the action of
seeing the unreal in the real.
Referencing photo of grandma.
Procreate.

Process(es): Comic like background
contrasted with color blocked
foreground to emphasize reality vs.
reverie.



Image 11

Sustained Investigation

Height: 8.25 inches

Width: 11.7 inches

Material(s): COMPUTER LIFE. I wish I can sleep and work at the same time. Procreate.

Process(es): Contrasting depth, lighting/color and texture in a fantastical living condition, magical realism.



Image 12

Sustained Investigation

Height: N/A

Width: N/A

Material(s): Acrylic paint on canvas. Combining the idea of magical realism with reveries.

Process(es): Challenging a large piece. Texture of impasto and smooth strokes, broad expanses with small details.



Image 13

Sustained Investigation

Height: 78.7 inches

Width: 39.4 inches

Material(s): R E A L I T Y. A representation of seeing the unreal in the real. Acrylic paint on canvas.

Process(es): Ordinary landscape scene with glitching castle covered in clouds to emphasize its unreal presence.



Image 14

Sustained Investigation

Height: N/A

Width: N/A

Material(s): Acrylic paint on canvas printed with my old painting. Inspired by Kafka on the Shore.

Process(es): Clouds and dark forest contrasted with glowing water to emphasize magical realism in an unreal world



Image 15

Sustained Investigation

Height: 19.7 inches

Width: 27.6 inches

Material(s): ON THE EDGE OF THE WORLD. The shore I see on the edge of my world. Acrylic paint on printed canvas.

Process(es): Revision of my old painting. Normal landscape view on an abstract painting to create a magical scene

Written Evidence

Sustained Investigation

Identify the question(s) or inquiry that guided your sustained investigation.

Describe how your sustained investigation shows evidence of practice, experimentation, and revision guided by your question(s) or inquiry.

Response:

In what ways can our reveries help us understand the world around us? I started my sustained investigation by exploring my personal reveries like (2), (5), and (9). But a big shift occurred when I read Murakami's *Kafka on the Shore*. Inspired by his use of magical realism, I wanted to express this literary technique in an art form to portray seeing the unreal in the real. I begin my process by asking myself, "what do I wish I could see in the world around me? What kind of world do I want to create?" Art history has shown me that I am extremely attracted to the dreamlike details and colors of *The Swing*, Caravaggio's tenebrism, and the abstract depictions in *Stadia II* for how I want to express magical realism artistically. I found that color, light, and texture contrast truly emphasize the magical sense and linear perspective aids the feeling of entering a new world. Thus, I began with (10), a direct portrayal of seeing the unreal in the real. Continuing works like (11), (13), and (15) all play around with different portrayals of magical realism as I progressively blur the line between enchanted elements and normal views. I challenge multiple mediums in hopes of accomplishing my goal.



Work 1

Selected Works

Height: 27.6 inches

Width: 19.7 inches

Idea(s): Going from chaos to control. Exploring color blocking, drip, splatter, texture, and gradation.

Material(s): Mesh, foam rollers, paper, masking tape, and acrylic paint on multimedia paper.

Process(es): Using favorite color scheme as I build six layers of paint that balance chaos and control.



Work 2

Selected Works

Height: 8.25 inches

Width: 11.7 inches

Idea(s): I wish I can sleep and work at the same time. A fantastical living condition that suites all needs.

Material(s): COMPUTER LIFE. Procreate on iPad.

Process(es): Contrast in depth portray a confusing view. Lighting and color contrast emphasize magical realism.



Work 3

Selected Works

Height: 19.7 inches

Width: 27.6 inches

Idea(s): Inspired by Kafka on the Shore, I paint the shore I would see on the edge of my world.

Material(s): ON THE EDGE OF THE WORLD. Acrylic canvas printed with my old abstract painting.

Process(es): Normal landscape view painted with mystical colors and glowing effect emphasize abnormal location.



Work 4

Selected Works

Height: 8.25 inches

Width: 11.7 inches

Idea(s): Playing with the idea of blocking light from the face, I block flowers as I drown in them.

Material(s): Origami, Prismacolor pencils, black brush pen, metallic markers, acrylic paint, and ink on paper.

Process(es): Made during self-quarantine, I find new mediums and creative processes. Adding texture and lighting.



Work 5

Selected Works

Height: 78.7 inches

Width: 39.4 inches

Idea(s): Artistically portraying magical realism by viewing a glitching castle in a normal landscape scene.

Material(s): R E A L I T Y. Acrylic paint on canvas.

Process(es): Texture contrast in smooth strokes vs. impasto, small details in broad expanse, gravitating colors.