

SUPERGRATE® PULTRUDED + MOLDED GRATING

Supergrate® is a high strength light weight grating system fabricated from highly corrosion resistant I and T bars and two components that mechanically lock to form the cross bars. The high strength, extremely stiff Supergrate® system is ideal for corrosive applications where light weight and safety are a must. Pultruded grating is available in 1" and 1-1/2" I-Bar depth and 2" T-Bar depth. 1" and 1-1/2" pultruded grating is available with a 40%, 50%, or 60% open area. 2" pultruded grating is available with a 33% and 50% open area.

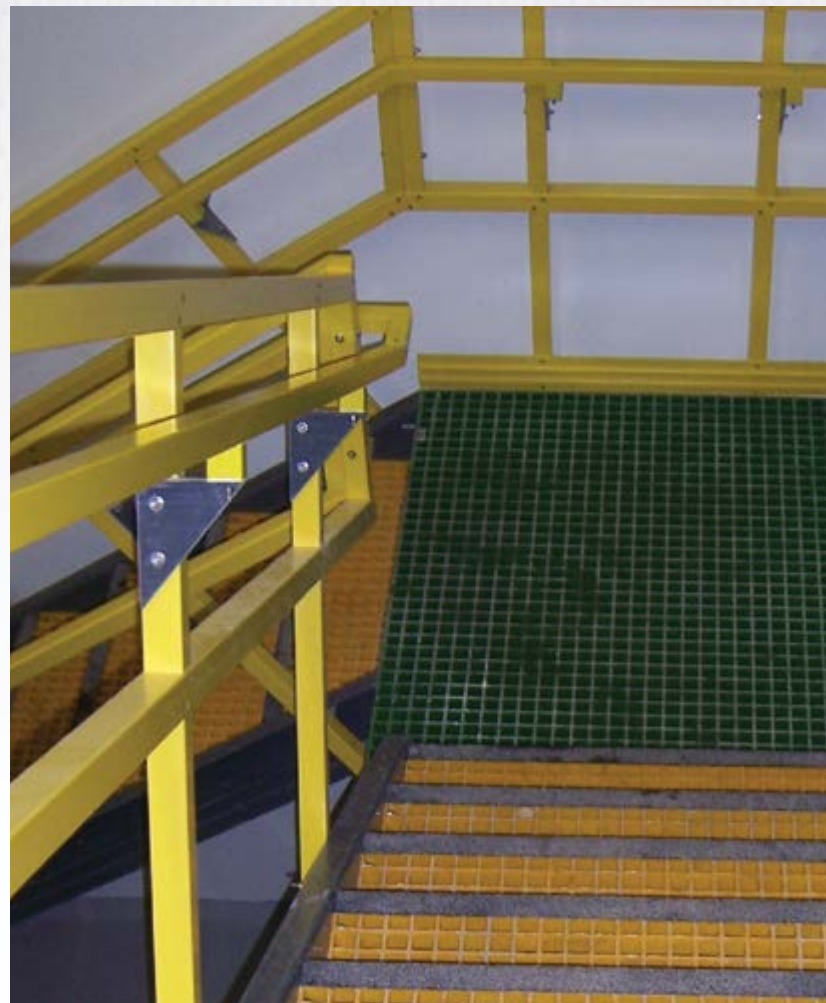
Supergrate® Molded Grating is ideal for highly corrosive applications requiring a large % open area. Molded grating is the prime candidate for jobs requiring extensive fabrication and cut outs and is available in 1", 1-1/2" and 2" panel thickness, grid patterns from 1-1/2" x 1-1/2", 1" x 4" and 2" x 2" in various panel sizes.

FEATURES AND BENEFITS

- Maintenance Free
- Ease of Installation
- Built-In Resiliency
- Environmentally Safe
- Corrosion Resistance
- Electrical And Thermal Insulation
- Electromagnetic Transparency
- Part Integration
- Inherent Color
- Dimensional Stability Over Wide Temperature Ranges

ANTISKID INFORMATION

CA quartz silica number 5 size aggregate blended with an epoxy matrix creates the antiskid surface. The antiskid is specially formulated for industrial traffic.



APPLICATIONS

- DECKING FOR WALKWAYS + PLATFORMS
- FLOORS
- STAIRS
- TRENCH AND PIT COVERS
- RAMPS
- GUARDS FOR ELECTRICAL EQUIPMENT + MACHINERY

COLOR

Pultruded Grating: IFR – Yellow • VFR – Dark Gray and Yellow

Molded Grating: IFR – Green, Yellow and Gray • VFR – Gray

Note: Special resins, colors and lengths available, contact factory at 888-CPI-PULL.

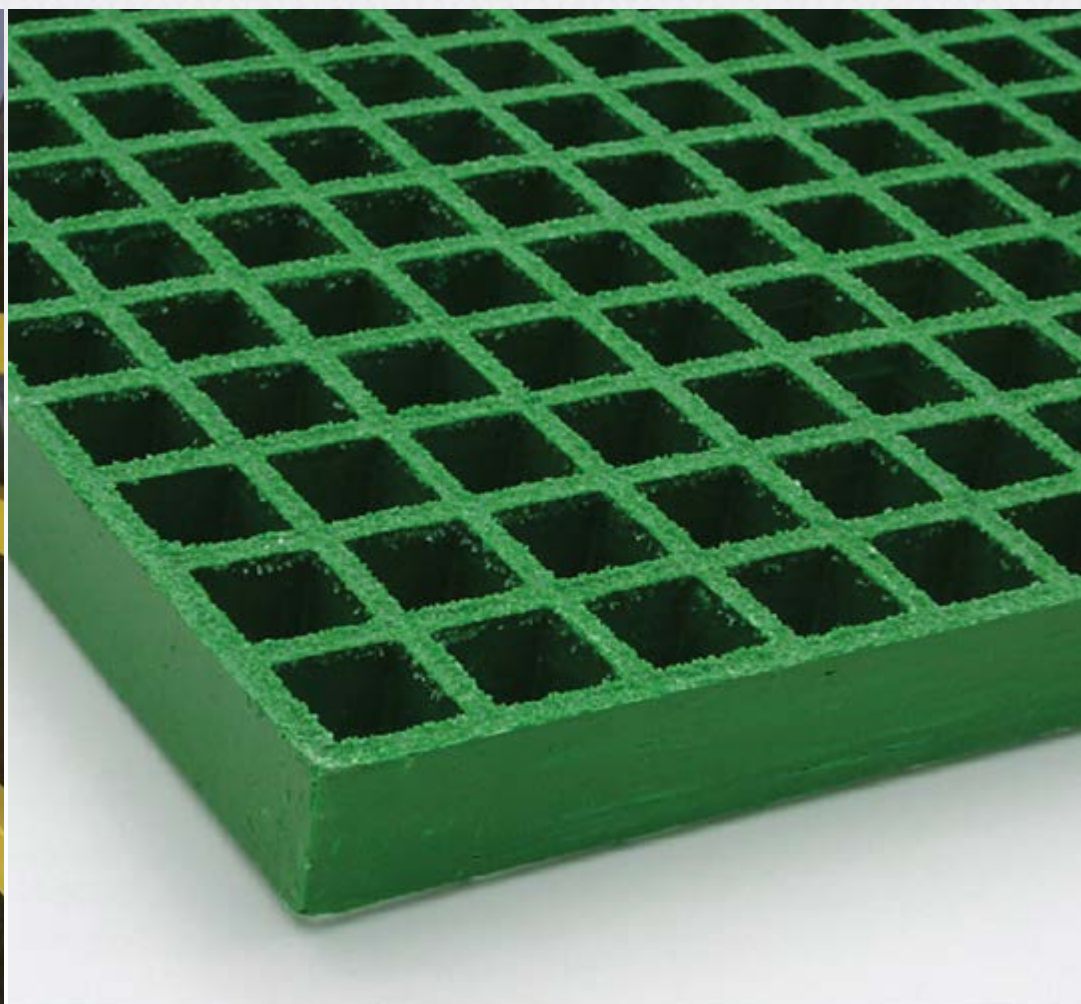
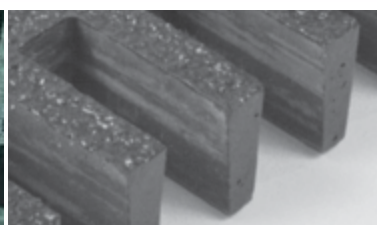
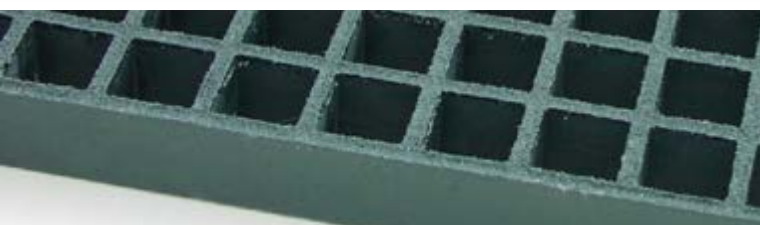


PHOTO COURTESY OF ULTRA FIBERGLASS SYSTEMS



SUPERGRATE® PULTRUDED AND MOLDED GRATING HARDWARE

PULTRUDED STAIR TREAD OFFERING

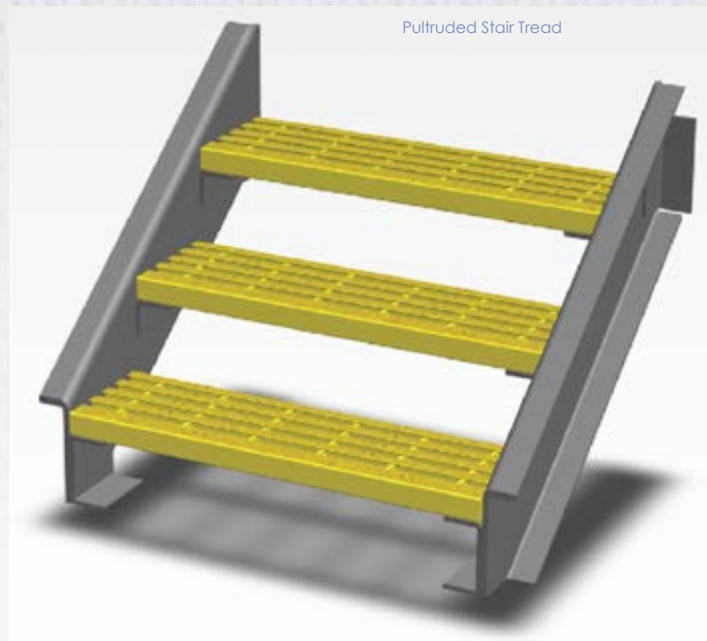
| Item | Panel Thickness | Resin Series | Color |
|----------|-----------------|--------------|------------------|
| I4010-6X | 1" | IFR/VFR | Dark Gray/Yellow |
| I4015-6X | 1.5" | IFR/VFR | Dark Gray/Yellow |
| I6010-6X | 1" | IFR/VFR | Dark Gray/Yellow |
| I6015-6X | 1.5" | IFR/VFR | Dark Gray/Yellow |
| T5020-6X | 2" | IFR/VFR | Dark Gray/Yellow |

IFR - Isophthalic Polyester Resin

VFR - Vinyl Ester Flame Retardant Resin

Standard Width is 12" (with nosing) and Standard Length is 20'.

Consult Price List for Availability.

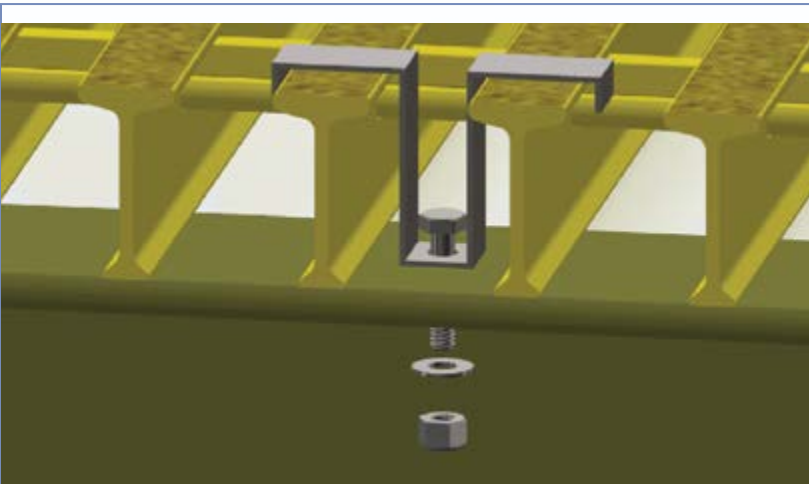


PULTRUDED GRATING HARDWARE

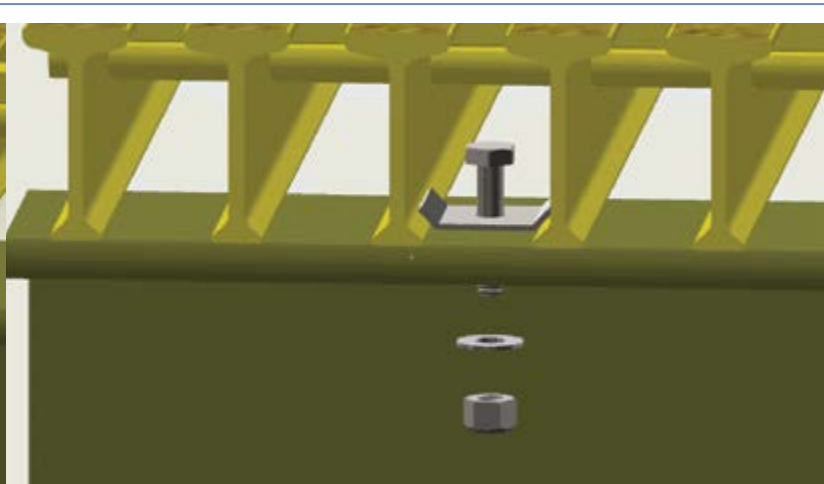
| Item | Clip Part Number | Kit Part Number ¹ |
|---------------------------|------------------|------------------------------|
| I4010 & I4015 Bottom Clip | CLP005 | CLK002 |
| I5010 & I5015 M-Clip | CLP007 | CLK004 |
| I6010 M-Clip | CLP006 | CLK003 |
| I6015 M-Clip | CLP008 | CLK005 |
| T3320 Bottom Clip | CLP009 | CLK006 |
| T5020 M-Clip | CLP010 | CLK007 |

¹Kits include one each of the clip, bolt, washer and nylock nut.

²All hold-down components are 316SS.



Pultruded Grating M-Clip

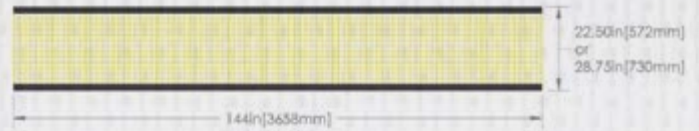


Pultruded Grating Bottom Clip

MOLDED STAIR TREAD OFFERING

| Item | Panel Thickness | Grid Pattern | Panel Size |
|------------------|-----------------|--------------|---------------|
| GRT036 | 1.5" | 1.5" x 1.5" | 22-1/2" x 12' |
| GRT061 (stocked) | 1.5" | 1.5" x 1.5" | 28.75" x 12' |

Treads are VFR yellow and have double sided black "gritted" nosing. Balance of tread is meniscus non-slip surface. Sold in full panels only. Consult Price List for Availability.

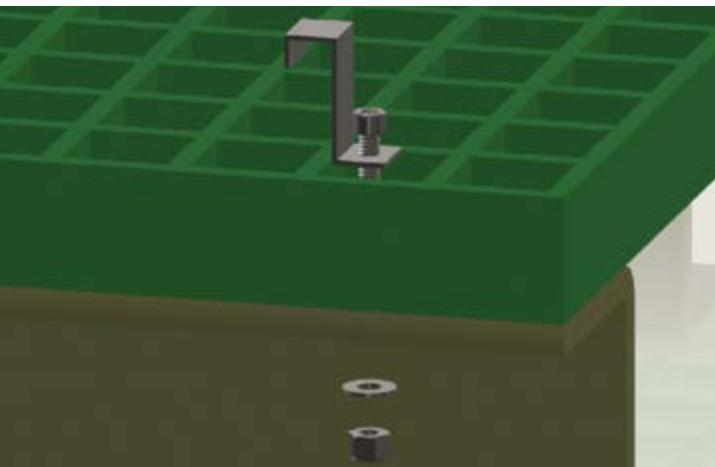


MOLDED GRATING HARDWARE

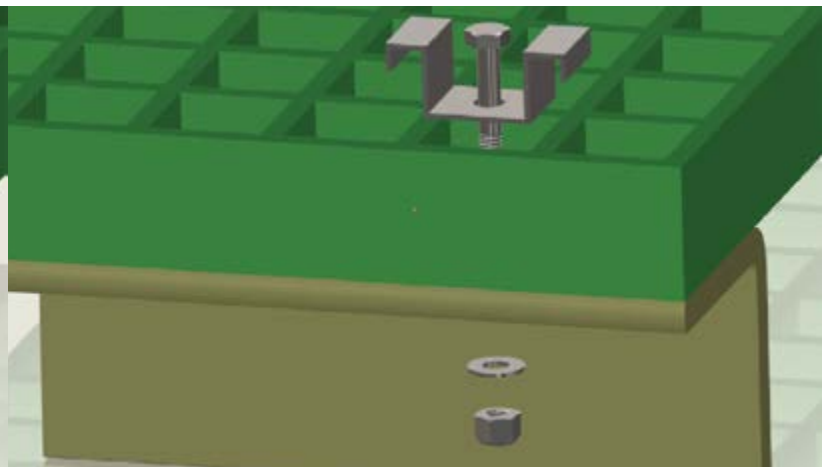
| Item | Clip Part Number | Kit Part Number ¹ |
|-------------------------------|------------------|------------------------------|
| 1" Thick x 1.5" Grid M-Clip | CLP037 | CLK010 |
| 1.5" Thick x 1.5" Grid M-Clip | CLP037 | CLK015 |
| 2" Thick x 2" Grid M-Clip | CLP038 | CLK019 |

¹Kits include one each of the clip, bolt, washer and nylock nut.

²All hold-down components are 316SS.



Molded Grating J-Clip (available upon request, consult factory)



Molded Grating M-Clip