

SUPERGRATE® PULTRUDED + MOLDED GRATING

Supergrate® is a high strength light weight grating system fabricated from highly corrosion resistant I and T bars and two components that mechanically lock to form the cross bars. The high strength, extremely stiff Supergrate® system is ideal for corrosive applications where light weight and safety are a must. Pultruded grating is available in 1" and 1-1/2" I-Bar depth and 2" T-Bar depth. 1" and 1-1/2" pultruded grating is available with a 40%, 50%, or 60% open area. 2" pultruded grating is available with a 33% and 50% open area.

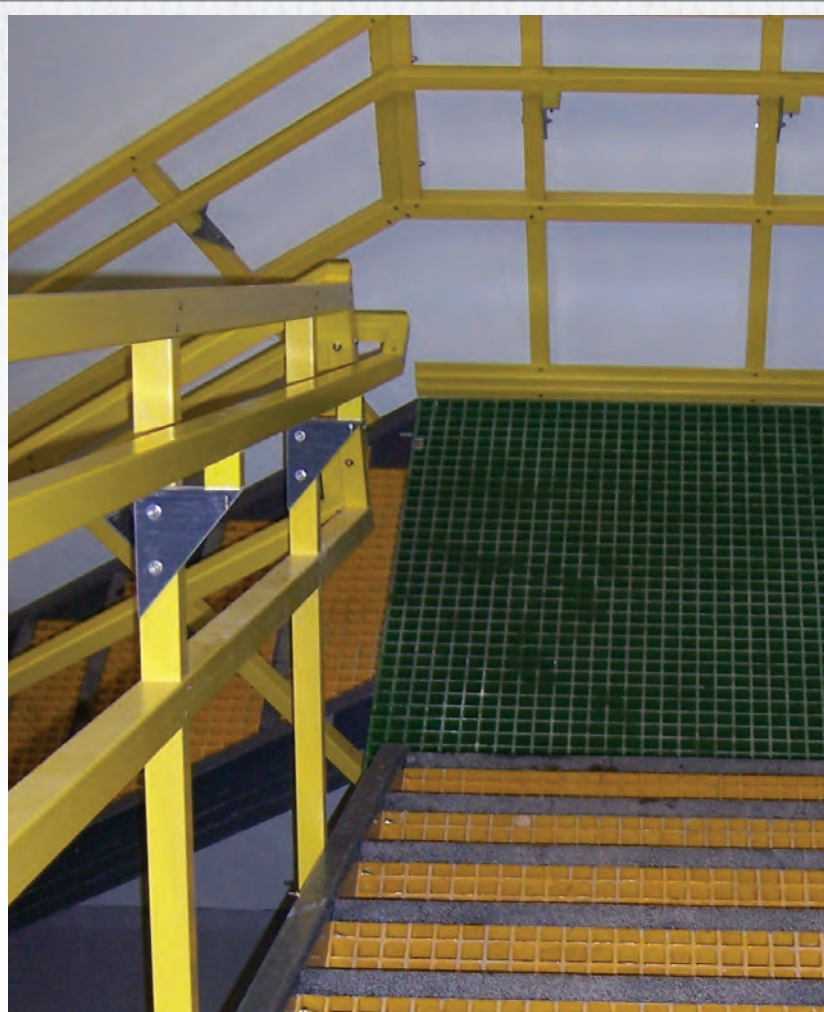
Supergrate® Molded Grating is ideal for highly corrosive applications requiring a large % open area. Molded grating is the prime candidate for jobs requiring extensive fabrication and cut outs and is available in 1", 1-1/2" and 2" panel thickness, grid patterns from 1-1/2" x 1-1/2", 1" x 4" and 2" x 2" in various panel sizes.

FEATURES AND BENEFITS

- Maintenance Free
- Ease of Installation
- Built-In Resiliency
- Environmentally Safe
- Corrosion Resistance
- Electrical And Thermal Insulation
- Electromagnetic Transparency
- Part Integration
- Inherent Color
- Dimensional Stability Over Wide Temperature Ranges

ANTISKID INFORMATION

CA quartz silica number 5 size aggregate blended with an epoxy matrix creates the antiskid surface. The antiskid is specially formulated for industrial traffic.



APPLICATIONS

- DECKING FOR WALKWAYS + PLATFORMS
- FLOORS
- STAIRS
- TRENCH AND PIT COVERS
- RAMPS
- GUARDS FOR ELECTRICAL EQUIPMENT + MACHINERY

COLOR

Pultruded Grating: IFR – Dark Gray and Yellow • VFR – Dark Gray and Yellow

Molded Grating: IFR – Green, Yellow and Gray • VFR – Gray

Note: Special resins, colors and lengths available, contact factory at 888-CPI-PULL.

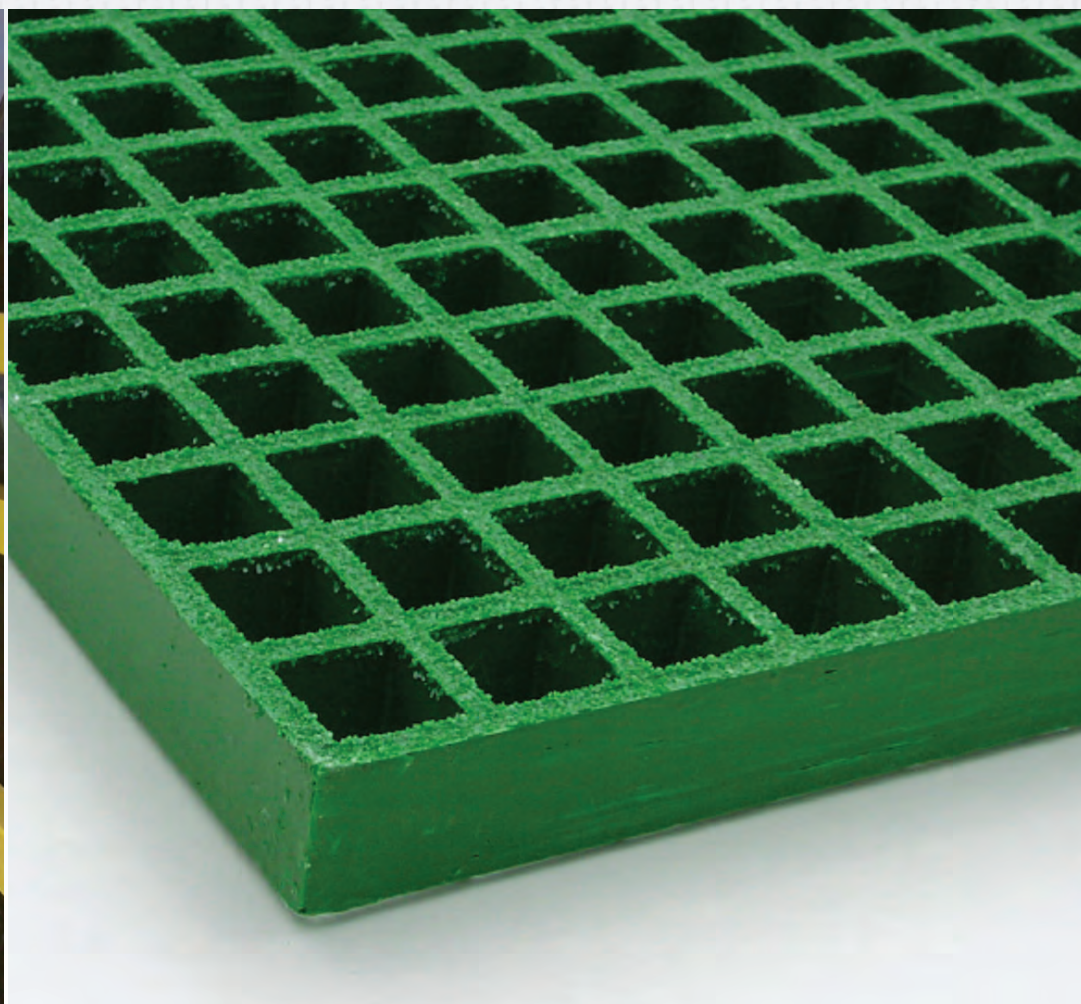
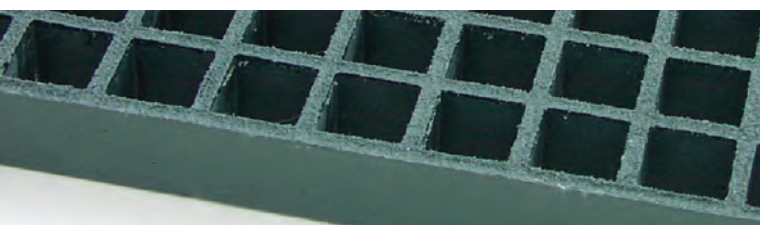


PHOTO COURTESY OF ULTRA FIBERGLASS SYSTEMS

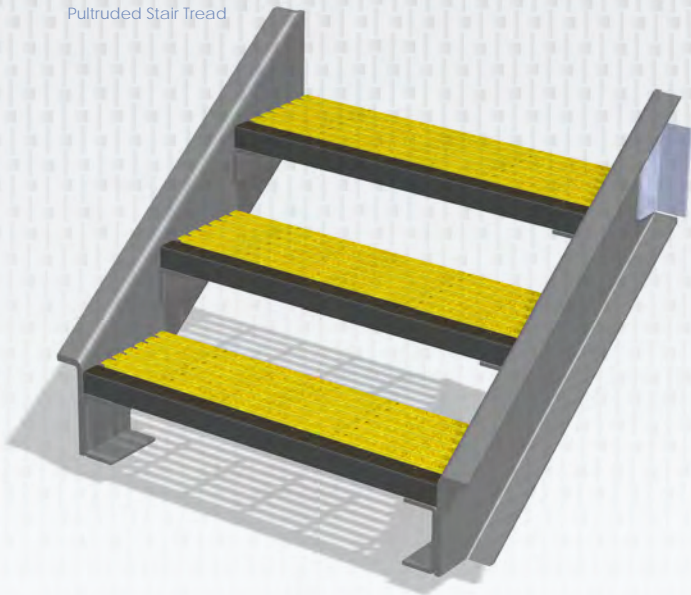


SUPERGRATE® PULTRUDED AND MOLDED GRATING HARDWARE

PULTRUDED STAIR TREAD OFFERING

Item	Panel Thickness	Resin Series	Color Options
I4010-6X	1"	IFR/VFR	Dark Gray or Yellow
I4015-6X	1.5"	IFR/VFR	Dark Gray or Yellow
I6010-6X	1"	IFR/VFR	Dark Gray or Yellow
I6015-6X	1.5"	IFR/VFR	Dark Gray or Yellow
T5020-6X	2"	IFR/VFR	Dark Gray or Yellow

IFR - Isophthalic Polyester Resin
VFR - Vinyl Ester Flame Retardant Resin
Standard Width is 12" (with nosing) and Standard Length is 20'.
Consult Price List for Availability.
Standard color options are Dark Gray tread with Yellow gritted nosing or Yellow tread with Dark Gray gritted nosing.
Custom nosing colors to be considered on a case-by-case basis.
Additional charges will apply.

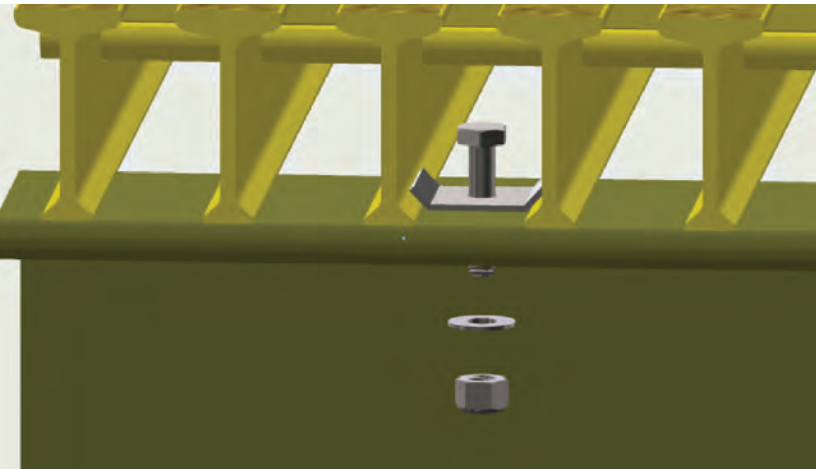
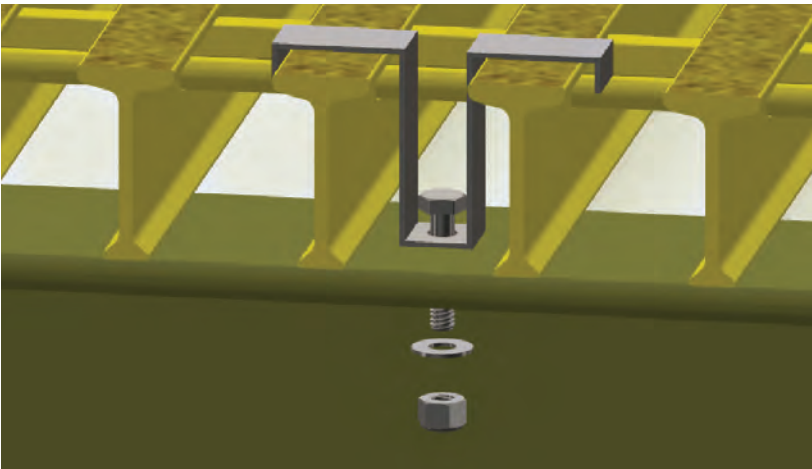


PULTRUDED GRATING HARDWARE

Item	Clip Part Number	Kit Part Number ¹
I4010 & I4015 Bottom Clip	CLP005	CLK002
I5010 & I5015 M-Clip	CLP007	CLK004
I6010 M-Clip	CLP006	CLK003
I6015 M-Clip	CLP008	CLK005
T3320 Bottom Clip	CLP009	CLK006
T5020 M-Clip	CLP010	CLK007

¹Kits include one each of the clip, bolt, washer and nylock nut.

²All hold-down components are 316SS.



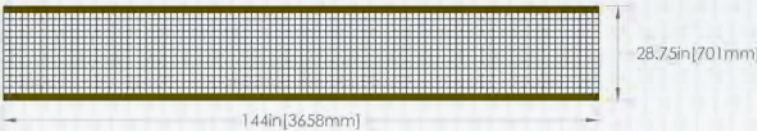
Pultruded Grating M-Clip

Pultruded Grating Bottom Clip

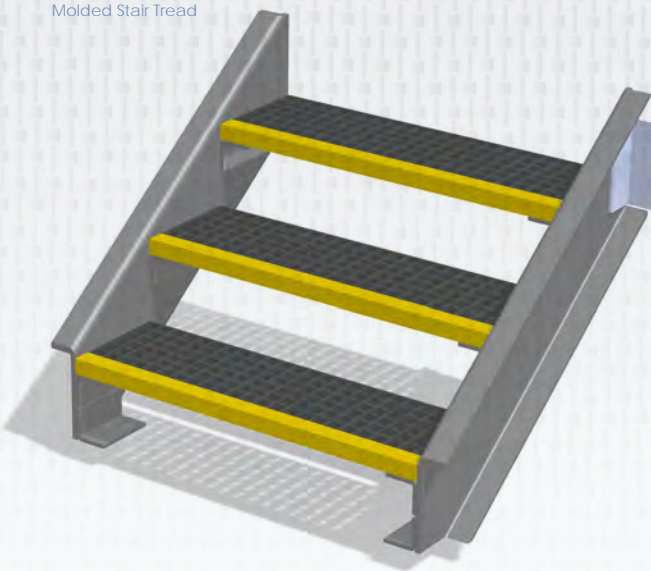
MOLDED STAIR TREAD OFFERING

Item	Panel Thickness	Grid Pattern	Panel Size
GRT061 (stocked)	1.5"	1.5" x 1.5"	28.75" x 12'

Treads are VFR gray and have double sided yellow "gritted" nosing. Balance of tread is meniscus non-slip surface. Sold in full panels only. Consult Price List for Availability.



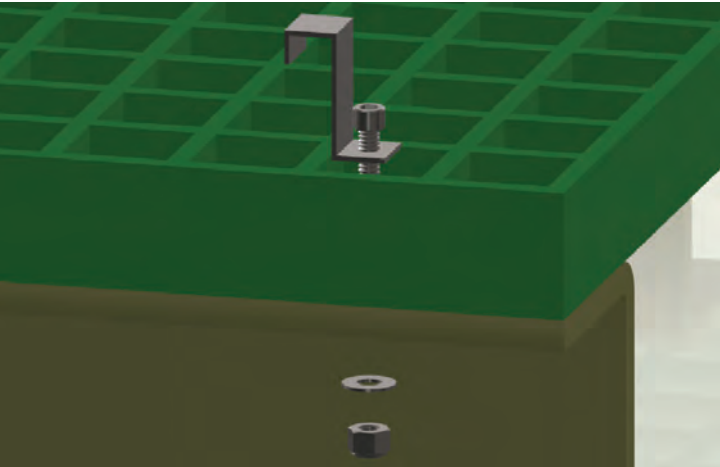
Molded Stair Tread



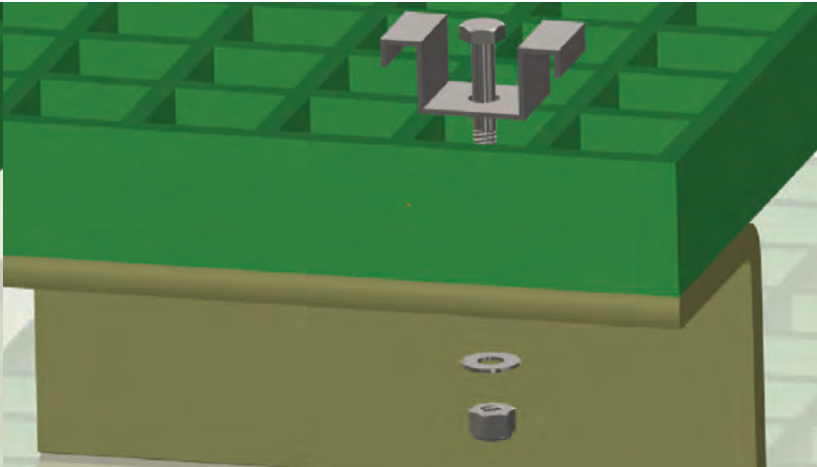
MOLDED GRATING HARDWARE

Item	Clip Part Number	Kit Part Number ¹
1" Thick x 1.5" Grid M-Clip	CLP037	CLK010
1.5" Thick x 1.5" Grid M-Clip	CLP037	CLK015
2" Thick x 2" Grid M-Clip	CLP038	CLK019

¹Kits include one each of the clip, bolt, washer and nylock nut.
²All hold-down components are 316SS.



Molded Grating J-Clip (available upon request, consult factory)



Molded Grating M-Clip