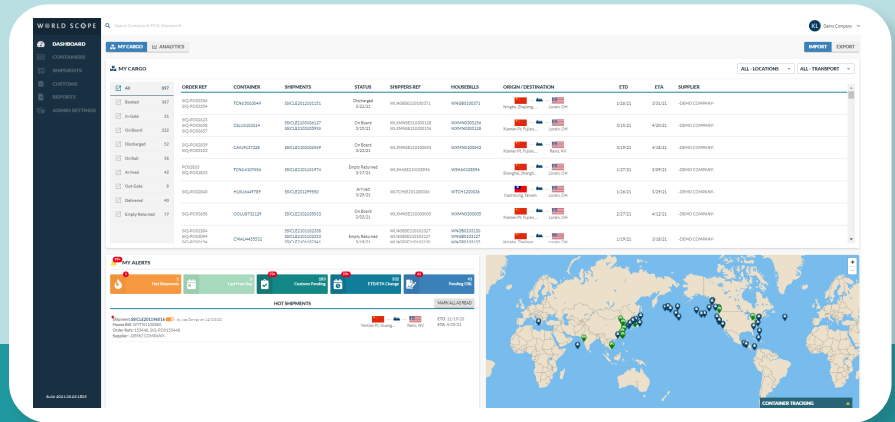


Welcome to your single source of truth.

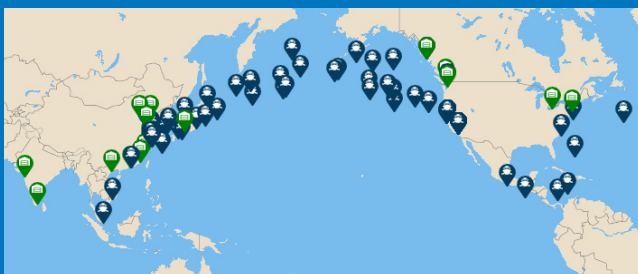
Looking for effective container management and predictive supply chain planning for your business? WorldScope delivers. It's your single source of truth for transparency and visibility that'll have you wondering how you ever managed without it.



Key Features

-  Tag "hot" shipments and receive visual alerts
-  View all shipping documentation in one place
-  Add custom filters to search and sort
-  Customs entry & document management

Proactive Alerts on Hot Shipments



Real-Time Container Tracking

Dashboard with Centralized Info

My Cargo dashboard displays shipment and container activity at every major milestone, giving you the insights you need for making critical decisions and averting potential risks.

GPS Enabled Visual Vessel Tracking

View real-time vessel positions and information for your shipments using state of the art API vessel tracking.

Meaningful Exception Management

Set the tolerance levels that trigger alerts for shipments or containers that fall out of the expected range you define.

Intuitive Analytics & Custom Reporting

Build custom reports and schedule the delivery day and time for fuss-free data insights that matter most to your team.

Reporting & Dashboards All in One Place

WorldScope's analytics tool gives you access to real-time insights, analytics, reporting and custom dashboards to help with critical decisions making.

Flexible filters allow for macro or micro analysis making it easy to understand how your business is performing, identify potential risks, and see how your logistics dollars are being spent.

Review inbound container forecasts, predict transit times, see equipment utilization, and analyze your transportation spend to maximize your supply chain's performance.

A New Look at Supply Chain Performance

Inbound Container Forecast

Track pending and arrived containers over time, and filter by destination or arrival period. Predict seasonal changes in volume and provide more accurate forecasts to your supply chain partners.

Transit Time Analysis

Visualize transit times by lane so you can better predict when shipments will arrive and identify holdups or problem areas.

Equipment Utilization Reporting

See your equipment utilization by container size or by mode, and easily filter by origin, destination, or departure date.

Finance & Transportation Spend Analysis

View transport and freight charges by container to understand your overall transportation spend and average cost per container. Break down charges by lane to get a high-level view of where you're spending the most.

Get Started With Analytics

- 1 Go to your main dashboard
- 2 In the top left corner, click on "Analytics" to access the analytics tools.

*Note: Access to Financial data may be limited per organization/user settings.

