



A GUIDE TO BUYING & OWNING YOUR FIRST PORTABLE GUTTER MACHINE

UPDATED FOR 2025



YOUR GUIDE TO LEARNING
ABOUT, BUYING, AND OWNING
A PORTABLE GUTTER
ROLLFORMING MACHINE

INTRODUCTION

First and foremost, all of us at New Tech Machinery (NTM) want to welcome and thank you for downloading our e-book: *A Guide to Buying and Owning Your First Portable Gutter Machine*.

For over 30 years, New Tech Machinery (NTM) has been manufacturing portable seamless gutter machines. As the innovator of the first polyurethane drive roller, now copied across the industry, NTM continues to pioneer portable rollforming technology.

We know that buying a portable gutter machine is a significant investment. Knowing how portable rollforming equipment can benefit your business, what you can expect when buying a gutter machine, and how to keep it running for a long time can make all the difference in improving your business's efficiency, productivity, and bottom line.

WHAT YOU'LL LEARN

What seamless gutter machines are and how they function

Why people buy this type of machinery and the benefits it provides to gutter system installers or contractors

How to purchase a seamless gutter machine and what you can expect during the buying process

Machine owner best practices and tips to keep your gutter machine in top condition

We thank you for your time, and we're happy to help if you have any additional questions about portable gutter machines and rollforming equipment. Please give us a call at **1-303-294-0538** or fill out the form on the contact page of our website www.newtechmachinery.com.

Sincerely,



Terry McGuire
Vice President
New Tech Machinery

TABLE OF CONTENTS

1

PAGE 4
PORTABLE ROLLFORMING MACHINERY: HOW IT WORKS, TYPES OF EQUIPMENT, AND USES IN METAL CONSTRUCTION

2

PAGE 11
WHAT ARE THE DIFFERENT TYPES OF GUTTER MACHINES?

3

PAGE 19
WHAT TO EXPECT WHEN PURCHASING A PORTABLE GUTTER MACHINE

4

PAGE 26
HOW MUCH DOES A PORTABLE GUTTER MACHINE COST?

5

PAGE 36
FINANCING MACHINERY FOR YOUR NEW GUTTER BUSINESS

6

PAGE 44
NTM'S POST-SALES SUPPORT: SHIPPING, UNPACKING, TESTING, AND MACHINE OPERATION BEST PRACTICES

PORTABLE ROLLFORMING MACHINERY

HOW IT WORKS, ADVANTAGES, AND DISADVANTAGES OF PORTABLE ROLLFORMERS

If you want to get into gutter fabrication and installation, you need to factor in all of the aspects of owning a portable gutter machine. Or, if you've been installing for a while and want your own machine to expand your business and cut out the middleman, you'll need to know a few things about portable rollformers before making your final decision.

In this chapter, you'll learn the different uses, advantages, and disadvantages portable rollformers offer.

IN THIS CHAPTER

What portable rollforming is and how it differs from in-plant rollforming

Who uses portable gutter rollforming machinery

Advantages and disadvantages of portable rollforming machines

WHAT IS PORTABLE ROLLFORMING?

Metal rollforming is defined as the process of feeding metal sheets or coil through a series of rollers where each roller station further manipulates the piece of metal into the desired shape. Portable rollforming is this same metal rollforming idea just on a condensed, transportable level. Also, portable gutter machines produce seamless gutters, which are a better quality than the prefabricated sectional gutters supplied by distributors.



HOW IT WORKS

A portable gutter rollforming machine operates similarly, if not the same, to an in-plant machine:

1

The metal coil material gets fed into the machine from the decoiler.

2

The drive rollers pull the metal through the inside of the machine.

3

The metal goes through the forming rollers at each forming station, where the gutter gradually forms into the desired end product. Depending on the profile, most gutter machines have around 11 to 14 rolling stations on each side.

4

The gutter is cut to the specified length using a shear or guillotine. Gutter length is either measured by hand or by a computer controller (either manual or automated, depending on the machine).

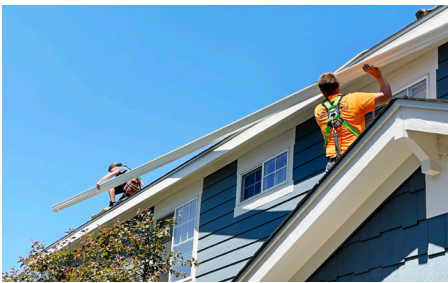
WHAT MAKES A ROLLFORMER “PORTABLE”?

The smaller size of a portable rollformer isn't the only difference between an in-plant and a portable gutter machine. Other characteristics help define a portable rollformer, such as:



TRANSPORTABILITY

Contractors can easily transport their portable rollformers to job sites in vans or trucks. Or they can opt to tow their machines anywhere on a trailer, which can attach to a variety of vehicles.



CUSTOMIZATION

Having a portable rollformer allows contractors to take their machines directly to the job site. This way, contractors can fabricate seamless gutters to custom sizes. The performance and appearance of seamless gutters will make your work stand out over competitors using prefabricated sectional units.



EFFICIENCY

To complete the entire portable rollforming unit, many machines often come with coil cradles (either mounted on the portable gutter machine or behind it) for the metal and run-out stands for the finished gutters. This makes transporting and operating the machine efficient and economical.



POWER

Most in-plant rollformers are electric, but some portable rollforming equipment comes with the choice of gas or electric as the power source. Residential gutter machines are typically electric-powered with 110V power in North America; 220V, 12V, and CE wiring are also available.

ADVANTAGES OF PORTABLE GUTTER MACHINES

Determining if a portable gutter machine is best for you or your company just depends on your needs. Much like any product or service, there are both advantages and disadvantages to using portable rollforming equipment. Below are some **advantages** of portable rollforming.



PORTABLE

These machines can be taken to any job site to run customized, seamless gutters.

Not only does the machine impress the customer, but it is noticeable and provides your operation with extra visibility.



LESS RISK OF DAMAGE

Transporting metal gutters involves loading and unloading, as well as moving the panels in a truck, where they could move around if not properly secured. All of this means more possibility of damage. Running greatly reduces the risk of damage.



NO SHIPPING NEEDED

Having your own portable gutter rollforming machine cuts out the cost of shipping gutters to job sites and risking damage in transit. Also, shipping can take time, which may cause job delays and interrupt workflow.



SEAMLESS GUTTER QUALITY

Manufacturing gutters on site allows you to customize gutters to the specifications of the structure. Plus, seamless gutters look better, require less maintenance, and are less likely to leak.



LESS WASTE PRODUCED

If you're ordering sectional gutter from a regional manufacturer who delivers the wrong product or length, it's a waste of both time and materials and can even damage your company's reputation. With portable rollforming, you have total control. You can run the correct gutter profiles with little to no waste, and you won't lose time due to order errors.



BUSINESS DIVERSIFICATION

If your machine is sitting idle, you have the option to run a "chop and drop" operation where you can supply rollformed gutters to other installers, in addition to your regular installations.

This gives you room to diversify your business and increase profits.

DISADVANTAGES OF PORTABLE GUTTER MACHINES

Much like any product or service, there are both advantages and disadvantages to using portable rollforming equipment. Below are some of the **disadvantages** of portable rollforming.



REQUIRES AN INVESTMENT

Easily the biggest drawback of portable rollforming is the fact that an investment is required. There are many ways to pay for a rollformer, including paying the entire cost upfront, financing, leasing, or even renting. Also, you'll need a truck or trailer and accessories.



TRAINED MACHINE OPERATOR NEEDED

Training is vitally important when operating a rollformer, and it helps to have a trained machine operator on staff, which means there are additional overhead costs to cover.



MACHINE PROBLEMS

If your portable rollformer is having an issue, whether a roller is scratching the paint on the metal or the machine is out of adjustment, it means the job has stopped. When the job stops for maintenance, the installation ceases for a period of time, which could result in a profit loss.



CARE AND MAINTENANCE REQUIRED

Taking care of and performing regular maintenance can help ensure that your portable gutter machine lasts for many years. As a machine owner, it's your responsibility to properly clean, lubricate, and maintain all of the different parts of your machine. This required maintenance (just like the maintenance of owning or leasing a car) isn't a disadvantage, but more of a consideration to keep in mind.

“

**MANY MACHINES OFTEN
COME WITH COIL CRADLES
(EITHER MOUNTED ON THE
PORTABLE GUTTER MACHINE
OR BEHIND IT) FOR THE
METAL AND RUN-OUT STANDS
FOR THE FINISHED GUTTERS**

”

WHO USES PORTABLE GUTTER MACHINES?

As someone who works in the gutter system industry, whether you're installing them yourself or own a business, you want to know who else uses portable rollforming equipment, right?

**RESIDENTIAL GUTTER
CONTRACTORS**

**COMMERCIAL GUTTER
CONTRACTORS**

**"CHOP AND DROP"
GUTTER SUPPLIERS OR
MANUFACTURERS**

**FACTORY/IN-PLANT
GUTTER MANUFACTURERS**

ARCHITECTS OR DESIGNERS

*Many often want to hire
contractors who own portable
rollforming equipment on
their projects.*

**OTHER CONSTRUCTION
INDUSTRY
PROFESSIONALS**

SO WHAT IS A PORTABLE ROLLFORMING MACHINE, AND WHY MIGHT IT BE MORE BENEFICIAL TO USE THAN OTHER TYPES OF ROLLFORMERS?

- Portable rollforming machines are smaller in size than in-plant rollformers, and can be taken directly to the job site.
- They have many different applications and uses, such as commercial or residential.
- By using a portable rollforming machine, you're not at the mercy of a supplier and don't have to worry about wasting time or money on shipping.
- You can use this machine to diversify your business by supplying cut & drop gutters to others.
- **Best of all:** It produces high-quality gutter systems for your customers.

Now that you know what a portable rollforming machine is and how it works, let's go over the different types of gutter machines available so you know which one might be right for your business.

WHAT ARE THE **DIFFERENT** TYPES OF GUTTER MACHINES?

Gutters are a common installation on most residential, commercial, and industrial building applications. However, there are different types of gutter systems best used for certain building applications, and designed to hold various amounts of water runoff.

If you own a gutter installation or contracting business, you need to know about the different types of gutter machines, their application, and features they can come with.

IN THIS CHAPTER

The importance of gutter systems

Different types of gutter machines and their features

WHY GUTTERS ARE IMPORTANT

Gutter systems are found on most commercial and residential buildings. They collect water runoff from the roof and carry it through the gutter system to a downspout where the water is directed to the ground and away from the building's structure. Gutters divert water from landscaping, prevent staining or water damage to exterior walls, and protect the structure's foundation. There are different factors to consider when looking at gutter types, which are outlined below.



The length and size of the roof will determine the length and size of your gutters.



The slope of the roof will determine the pitch of the gutter system to effectively drain water from the roof away from the house.



Structures without fascia boards will require a special type of gutter system.



The amount rainfall in your region helps determine what size and style gutter you should get for maximum effectiveness.

GUTTER MATERIALS

Portable gutter machines fabricate different types of metal. The two most common are aluminum and steel, while pricier metals like copper are more popular for high-end homes. Portable rollforming machines cannot run vinyl or other materials besides metal.



ALUMINUM

Aluminum gutters are popular for many residences. Aluminum is light, inexpensive, and doesn't rust. These gutters stay sturdy in rainy climates as they can handle heavy downpours and severe runoff from steeply pitched or wide roofs. Aluminum gutters come in assorted colors and can also be painted.



STEEL

Steel gutters are durable and can withstand snow, ice, heavy rain, wind, and continuous wet conditions. One thing to keep in mind about all steel gutters is that they are difficult to install, and require welding or bolting and sealant. As a result, they tend to have more issues due to improper installation, which is common. Plus, the labor for installation will likely erase any savings from material costs.



COPPER

Its high price alone makes copper the elite metal of the industry, which is why you'll find copper gutters mostly on expensive homes. While initially shiny and sleek, copper will eventually oxidize, giving it a golden-brown or greenish appearance. In addition to their durability, copper gutters won't rust or erode. They don't buckle, bend, or crack from extreme temperatures. Also, oxidation adds an extra layer of protection against the elements.



ZINC

Zinc is costly and offers no real advantages over steel. Still, zinc gutters are popular in Europe and may be gaining some traction in the U.S. Zinc won't crack, rust, or fade, although the color will change from gray to a patina, giving it a rustic appearance that increases its resistance to the elements. Other than regular cleanings, zinc gutters require little maintenance or repair.

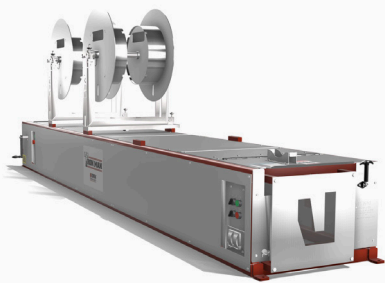
TYPES OF PORTABLE GUTTER ROLLFORMING MACHINES

Most metal gutters are made through the rollforming process, either by an in-plant or portable machine. Gutters manufactured by portable gutter machines are seamless (continuous), whereas prefabricated sectional gutters generally come in 10' sections.

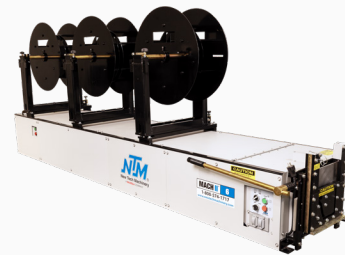
Seamless gutters, those that are made to custom lengths directly at the job site, are usually made from aluminum or steel. Seamless gutter systems decrease the risks of leaking and potential damage to the structure. They also add a sleek aesthetic to the roofline.

Sectional gutters are sold in pieces and installed as separate components to the structure. They are joined together (either soldered or caulked) and then installed onto the building. A downside to using sectional gutters is that water can leak from the seams joining two individual sections together. This can cause problems over time if not kept maintained and cleaned.

Although there are numerous gutter profile options available, there are four major types of gutter machines:



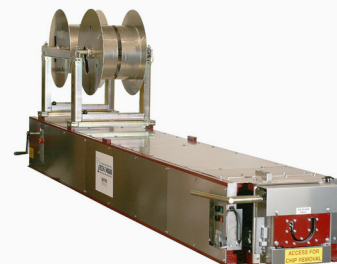
FASCIA GUTTER
KWM Gutterman



K-STYLE
NTM MACH II



BOX GUTTER
NTM BG7



HALF-ROUND
KWM Gutterman

New Tech Machinery doesn't currently offer a portable machine that produces half-round gutters.

FASCIA GUTTER MACHINE

Fascia style gutters are a popular type of gutter system in North America, especially in Western portions of the United States and Canada. Many people think that fascia gutters add appeal to homes with their unique visual elements that standard gutters don't offer.



This style of gutter is mostly seen on homes where a fascia board is not installed along the lower edge of the roof. Fascia gutters are directly installed onto the framing so the smooth face of the gutter hides the edge of the roof's rafter tails. This prevents water from pouring over the side and damaging the structure. The fascia gutter is larger than K-style or half-round, so it is more capable to handle the sudden onset of water, and effectively divert it away from your home with zero or minimal overflow.

Using fascia style gutters helps save you time and money because you don't have to install a fascia board before putting the gutter up.

Not only are you saving money on installation costs (not spending money on wood for fascia boards, labor costs, etc.), you're also saving money on maintenance after the installation.

K-STYLE GUTTER MACHINE

The **K-Style gutter profile** became more popular in North American homes after World War II and is the most popular style of gutter found in the region today. It typically has a flat bottom and profiled face, which looks similar to crown molding. This type of gutter is strong because of its design and can handle more than double the amount of water runoff than a half-round.



Just about every major gutter installer carries this type of gutter profile and its accessories. What makes these machines unique are the options for larger gutter sizes (5", 6", 7", 8") and the availability of multiple profile styles between them, such as hook assemblies, back flanges, and bottom bead rollers.

BOX GUTTER MACHINE

Box gutters, also referred to as “square” gutters, don’t have the decorative shape like K-style gutters. In the 18th and 19th centuries, these gutters were typically built into the roof structure, but today it’s more common to see these gutter systems exposed.



They are great for commercial applications or residential buildings that don’t necessarily need to look stylish but require a deep enough trough to handle a lot of water runoff.

HALF-ROUND GUTTER MACHINE

As its name suggests, a half-round gutter is a semi-circular gutter with a rolled inward lip or “bead,” and are common in drier climates and on older houses. **Half-round gutters** come in many color choices, and copper half-round gutters are popular on expensive homes. They drain water more effectively than K-style gutters due to the curvature in the sides, although they can’t hold as much water.

Typically, these machines make 5” or 6” profiles, usually out of steel, aluminum, or copper metal.

“

TODAY, HALF-ROUND GUTTERS COME IN MANY COLOR CHOICES AND ARE A POPULAR CHOICE FOR UPSCALE RESIDENTIAL PROPERTIES.

”

Whether you’re looking at a fascia, K-Style, box, or half-round, there are some considerations to make before you decide which portable gutter machine is right for your needs. Make sure you ask any machine manufacturer precisely what you’re getting with the machine, if it includes add-on options, and what kind of post-sales support you can expect when purchasing a machine.

TO HELP GAUGE WHAT KIND OF PORTABLE GUTTER MACHINE WOULD BE BEST FOR YOUR BUSINESS, ASK SUCH QUESTIONS AS:

- What style of gutter is in high demand in the area?
- What kind of gutter would be better for your customers?
- Which metal materials are popular in the area, and which machines can make gutter systems out of those materials?
- What kind of features come with the machine? Are you getting the most bang for your buck?
- Which kind of machine can you afford?

As you now know, seamless gutter systems are an efficient and cost-effective way to keep a building’s structure free from water damage possible by lots of water runoff. Fascia, K-style, half-round, and box gutters all have different features that can prove more useful depending on where you live and the visual aesthetic you desire.

WHAT TO EXPECT WHEN PURCHASING A PORTABLE GUTTER MACHINE

It doesn't matter if it's your first or fifth machine: Buying a new portable gutter machine is an exciting step for any contracting or manufacturing business.

That being said, the process of buying a portable rollformer isn't something to take lightly, especially when you're spending thousands of dollars on a machine that your business's productivity and profitability depend on.

IN THIS CHAPTER

Specific considerations to keep in mind before and during the purchase of the machine to help make the entire process easier for you and your employees

WHAT TO KNOW AND DO BEFORE YOU BUY A PORTABLE GUTTER MACHINE

DO YOUR RESEARCH

You know what they say: An educated consumer is a smart consumer. Doing your research ahead of time, whether it's done online or otherwise, is the best way to prepare for the buying process.

This includes looking at and comparing different:

	Manufacturers
	Prices
	Machine sizes
	Machine speeds
	Available profiles and sizes
	Accessories
	Warranties
	Power requirements
	Automated functionality

While you might not be able to precisely determine what machine you want to purchase during the research phase, knowing more about your options can help narrow down your choices.

ADDITIONAL COSTS

Aside the cost of the machine itself, you may want to factor in the cost of a truck or trailer to transport the machine, accessories, and maintenance.

YOUR BUDGET

Your budget is one of the most important considerations when it comes to purchasing something as significant as a rollforming machine. You should have a comprehensive understanding of how much money your company can afford to spend on a seamless gutter machine.

If you see that your business might be spread too thin if you bought a machine, you should consider other payment options, such as financing, renting/leasing, buying used equipment, or sticking with a factory supplier for the time being.

Buying a machine is a significant investment, and we understand that it might not be right for everyone, which is why most manufacturers can help point you in the right direction that will work for you and keep your business profitable.

HOW YOU WANT YOUR BUSINESS TO CHANGE, OR NOT, WITH THE MACHINE

When you own a portable rollforming machine, your business can change in many ways. For example, if you want to start offering a “chop and drop” manufacturing service, that’s an option. Another way it can change is that by cutting out the third-party manufacturer, you add to your profit margin. This is why it’s vital to ask yourself some of the following questions about your business:

What does my business focus on today? What do I want my business to look like/focus on in three to five years?

- Profit growth
- Project sizes & quantities (commercial vs. residential)
- Offered products
- Offered services (“chop and drop” supplier)

What profiles are popular in my region?

Profile popularity varies quite a bit depending on the location, environment, and weather patterns. It’s important to know what’s popular in your area so that you can determine what type and size of gutter machine you need to purchase. If you’ve been working in the business for a while, you most likely know the gutter type popular in your area. If you’re new to the industry, do some research and ask around to find out.

“

DOING YOUR RESEARCH AHEAD OF TIME, WHETHER IT'S DONE ONLINE OR OTHERWISE, IS THE BEST WAY TO PREPARE FOR THE BUYING PROCESS.

”

YOUR BUSINESS NEEDS & ABILITIES

Beyond knowing what is available in the marketplace, you should also have a solid understanding of your business needs and how a rollformer fits in with those needs. For example, some common reasons that companies decide to buy a portable rollformer include:

To start a gutter installation business

To gain more control of production, inventory, and profits

To operate more efficiently on projects

It's affordable to buy one at this time/it makes sense to buy one

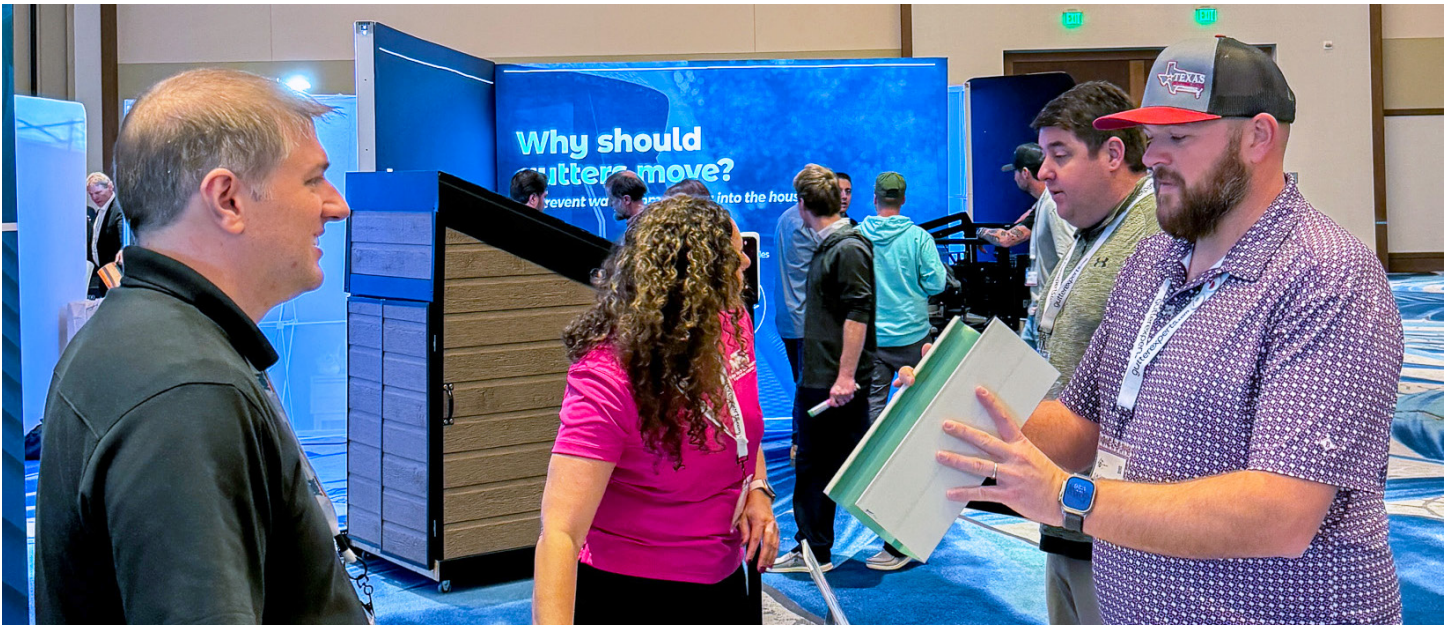
The need to run longer gutter lengths

To expand business and offer “chop and drop” gutters

There are many more needs that might warrant purchasing or financing a rollforming machine, which is why it's helpful to develop a business plan before you buy.

QUESTIONS YOU SHOULD BE ASKING GUTTER MACHINE MANUFACTURERS

When you're contacting a portable gutter machine manufacturer, you should ask as many questions as possible to gauge each company's policies, warranties, and service provisions. Here are some examples of questions you should ask in the initial phone call or meeting with the machine manufacturer:



BUSINESS RELIABILITY QUESTIONS

- ✓ How long have you been in business?
- ✓ Are you part of a larger company? If so, what is the name of the parent company?
- ✓ As a business, do you offer any type of assistance after the sale?
- ✓ Do you have references or testimonials that I can read about or talk to?

These manufacturers want to talk to you about their rollforming solutions and shouldn't have an issue answering any questions.

MACHINE-SPECIFIC QUESTIONS

- ✓ What is your lead time for getting this machine to me?
- ✓ Where do you manufacture your machines?
- ✓ Do you offer warranties? What are they?
- ✓ What are my payment options?
- ✓ Do you have a service department? If so, what does service cost?
- ✓ Do you offer training for this machine?

WHAT TO EXPECT DURING THE PURCHASE OF A MACHINE

Once you've had your questions answered, learned about gutter machine options and configurations, researched financing, and examined your business needs, you're ready to start the purchasing process.

The process we are about to dive into applies to buying a rollforming machine directly through New Tech Machinery.

Make sure you understand from the machine manufacturer how their buying process works and what you can expect when purchasing a machine from them, as company policies and procedures may differ.

Buying a portable rollforming machine is generally straightforward, although you'll need to figure out which accessories and what configuration you want.

HOW THE ROLLFORMER BUYING PROCESS TYPICALLY WORKS

1

The buyer will talk with a knowledgeable salesperson (either via phone or in person) about the machine(s) they are interested in purchasing.

2

A formal quote is issued to the customer for the desired machine(s).

3

The salesperson thoroughly reviews the quote with the customer to make sure everything included is correct, such as configurations, accessories, etc.

4

Once the customer agrees to the formal quote, they issue a purchase order (PO) number or send the signed quote back to us to indicate that they are ready to submit payment.

5

From there, we can issue the buyer an estimated build date, which gives them a better idea of when the machine will be ready for delivery or pickup.

Once you've reviewed the buying process and finalized your machine selection, you can confidently proceed with your purchase, ensuring all details are accurate and clear before moving forward with payment.

PAYING FOR YOUR MACHINE

After the official quote and agreement between both parties on the price and quoted products, payment is the next step of the process.

As mentioned, there are many avenues available for purchasing a machine, including:

Paying for the entirety of the machine at one time (cash, credit, or otherwise)

Paying for the deposit and then funding the remaining balance before the shipment

Financing the machine through a financing company (get the machine now and pay it back later)

Leasing or renting the machinery (some companies even offer lease-to-own programs)

At NTM, to start production on a machine, the deposit (at least 25% of the total cost) must be collected from the buyer. After it's received, our team begins to assemble the rollformer and prepare it for use. The final payment, including any freight cost, is due prior to shipping or the time of pickup at the factory.

If you're purchasing from another manufacturer, make sure to ask about their payment options and what is required when purchasing your portable gutter rollformer.

IT'S IMPORTANT TO EDUCATE YOURSELF BEFORE YOU BUY THIS BUSINESS-CHANGING PIECE OF EQUIPMENT, AND REMEMBER TO:

- Always do your research and ask yourself/the manufacturer the hard questions before you put down any money.
- Make sure you pay for the machine in a way that aligns with your business plan. If you feel like it might be too expensive to pay for outright, look into financing, leasing, or other payment options.

Knowing how the purchasing process works can help make buying a new portable rollforming machine easier on any contracting or manufacturing business. But understanding the machine's price and what to look for in a new or used machine can help you decide the best fit for your business and customer's needs.

HOW MUCH DOES A PORTABLE GUTTER MACHINE COST?

So you're in the market to purchase a new gutter machine? Congratulations! Not only will buying a new or used portable seamless gutter machine give you a competitive edge in your local market, it will also help you control your own production and hang gutters as fast as you can make them.

But how much do you know about the cost of a portable gutter machine? Do you know what to look for in a used machine? What about a new one?

IN THIS CHAPTER

Cost of some portable gutter machines

What to look for when buying a new gutter machine

What to look for when buying a used gutter machine

Questions to ask yourself to help you buy the right machine

WHAT IS THE COST OF A SEAMLESS GUTTER MACHINE?

It's the million-dollar question: How much does a portable seamless gutter machine cost? Well, **it depends**. In fact, it depends on many different factors.

Base prices of portable gutter machines (below) can vary depending on machine manufacturers, features that the rollforming machine can offer, and accessories available with the gutter machine.



MACH II™ 5" GUTTER MACHINE
\$8,100



MACH II™ 6" GUTTER MACHINE
\$9,500



MACH II™ 5"/6" GUTTER MACHINE
\$11,200

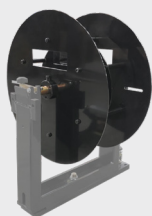


BG7™ BOX GUTTER MACHINE
\$65,900

Keep in mind that base prices for seamless gutter machines may NOT account for optional features and accessories. For detailed information about these machines and how they differ from one another, it may be best to contact the machine manufacturer and request more information on each machine's individual functions, features, and options available.

GUTTER MACHINE OPTIONAL FEATURES & EQUIPMENT

Beyond just the standard gutter machine, many options and functions can be added that can increase the price. Keep in mind, you can purchase any seamless gutter machine without any of the add-ons, but some of these parts may be a necessity in your specific situation, while others might be considered “nice-to-haves” or future options. Some common accessories and options to add to a seamless gutter machine include:



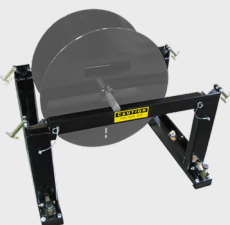
REELS



REEL STANDS



CRADLES



TRANSFER RACKS



RUN-OUT STANDS



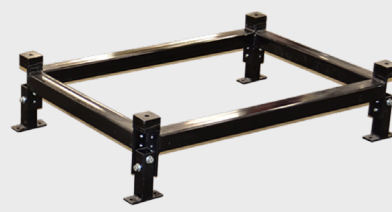
ELECTRICAL



HOOK ASSEMBLY



BOTTOM BEAD ASSEMBLY



RISER PADS



MACHINE COVERS



SHEAR / GUILLOTINE



COMPUTERIZED LENGTH CONTROLLER

WHAT TO LOOK FOR IN A NEW PORTABLE SEAMLESS GUTTER MACHINE

The best way to make sure you purchase the right seamless gutter machine is to be an educated consumer, as this equipment will be a major part of your business and affects your profits.

So, when you go to purchase a new gutter machine, what should you look for?



Separate drive and
forming rollers



Warranties



Materials
formed



Gutter
size



Gutter
profile



Machine
length



Push-button controls
vs. drum switch



Availability of
length control

THINGS TO CHECK FOR ON A NEW MACHINE

SEPARATE DRIVE AND FORMING ROLLERS

The best rollforming machines, gutter or otherwise, tend to be those with separate drive and forming rollers. Separating the two results in less stress on the metal because the rollers aren't trying to form and drive the metal at the same time. Drive rollers are typically made of polyurethane or metal.

WARRANTIES

Before you buy new equipment, find out about the warranties on the machine parts and accessories. Also, make sure replacement parts are readily available.

MATERIALS FORMED

Confirm that the portable gutter machine you're interested in will run the materials you plan to provide to your customers. For example, some machines don't run copper.

GUTTER SIZE

If you know the majority of your clients will want a 5" gutter, you might be fine just purchasing the one machine size. However, if you want to offer both 5" and 6", a combo gutter machine may be your best option. Regardless, knowing what size of gutter is common in your area will help you choose the right machine for your business.

GUTTER PROFILE

Depending on the number of profile options you want to provide to your customers to choose from (i.e. back flanges, hooks, etc.), make sure the machines you're looking at are able to rollform that variation.

MACHINE LENGTH

The longer the machine, the higher the quality of the finished product. This is the result of more forming stations used to gradually form the metal, which reduces stresses inflicted on the materials during the rollforming process.

PUSH-BUTTON CONTROLS VS. DRUM SWITCH

For controlling the machine, push-button controls are considered the better option, as they are easier and more efficient to use. Also, drum switches have a habit of breaking.

AVAILABILITY OF LENGTH CONTROL

If you're looking for the machine to automatically run gutter at a specified length, ensure you get a rollformer with a computer controller that allows this function.

WHAT TO LOOK FOR IN A USED PORTABLE GUTTER MACHINE

Let's say you're not quite ready for a brand-new gutter machine, which is very common for new or smaller businesses, so you want to look into purchasing a used gutter machine.

Buying a used machine can come with its own set of pitfalls, but can also provide an entry into the business. Make sure to check all of the attributes listed in the new machines section, in addition to these items:

DON'T BUY A MACHINE UNTIL YOU'VE SEEN IT RUN IN PERSON

A problem we've heard about time and time again, especially with gutter machines, are buyers not going in person to look at the machine and its capabilities. We can't stress this point enough: **It's up to you as a buyer to make the seller run material through the machine for EVERY profile and size (if the seller says the machine runs both 5" and 6" gutters, make sure they run both) to prove the machine functions correctly. Also, never put any money down on a machine until you've seen it.**

THE MACHINE IS IN GOOD CONDITION ON BOTH THE OUTSIDE AND INSIDE

Any rollforming equipment should be stored in a dry place, protected from the elements, whether a shop, enclosed trailer, or van. However, some machine owners leave their rollformers out to rust or just don't maintain them properly. What you want to avoid is a machine that becomes a money pit because of poor treatment by the previous owner. So, while saving money is an advantage, you also run the risk of paying for repairs or new parts, including accessories, rollers, or electrical controls.

THE PRICE SEEMS "TOO GOOD"

If a price seems too low or is too good to be true, it might be a red flag of existing issues. It's hard to define what is considered a "low price," but if you feel uneasy about it, ask the seller and have them prove it functions.



Please note, in addition to the items above, most used machines DO NOT include a manufacturer's warranty, although some warranties may transfer. Ask the seller about warranty coverage.

USED MACHINE BUYER'S CHECKLIST



- | | |
|--|--|
| <div>✓</div> <div>FRAME</div> <div>Inspect for dents or bending.</div> | <div>✓</div> <div>OVERALL CONDITION</div> <div>Look for rust or damage to machine parts.</div> |
| <div>✓</div> <div>ROLLERS</div> <div>Check for damage to rollers or separation in rubber drive rollers.</div> | <div>✓</div> <div>SELLER'S CREDIBILITY</div> <div>Check that the seller is a reputable agent or that you can verify their gutter business.</div> |
| <div>✓</div> <div>SWITCHES</div> <div>Make sure the switches are in working order and the electrical operations are responsive.</div> | <div>✓</div> <div>WARRANTY</div> <div>Find out if a valid warranty transfers with the machine.</div> |
| <div>✓</div> <div>GUTTER CONDITION</div> <div>Denting, imprinting imperfections, or markings in the gutter when it's run through the machine could point to damaged rollers that will need replacing. Make sure to run material through the machine and inspect it carefully.</div> | <div>✓</div> <div>SAFETY FEATURES</div> <div>Familiarize yourself with any safety features or best safety practices when using the machine.</div> |

A white square containing a large orange opening quotation mark.

**THE BEST WAY TO MAKE
SURE YOU PURCHASE THE
RIGHT SEAMLESS GUTTER
MACHINE IS TO BE AN
EDUCATED CONSUMER**

A white square containing a large orange closing quotation mark.

CONSIDER YOUR PAYMENT OPTIONS

After researching the cost of various portable gutter machines, there's another important consideration: What method of payment is best? Every new gutter business has different assets, levels of cash, etc. at the beginning. That's why there are a variety of payment options to choose from to suit anyone's particular situation.

Weighing the benefits and drawbacks of each option can help you decide what's best for you and your business.

OPTION #1: BUYING A NEW MACHINE

BENEFITS

- You're the original owner of the machine.
- You receive the original warranty.
- New machines are often offered with machine training.
- Variety of accessories and add-ons available for machine customization.

DRAWBACKS

- Higher initial cost.
- Responsible for all maintenance, adjustments, and repairs.

OPTION #2: BUYING A USED MACHINE

BENEFITS

- It's less expensive than buying a brand new machine.
- It's a reasonable alternative for those without a lot of initial cash flow.
- Used machines can run for years with proper care.

DRAWBACKS

- Locating the machine you need may be difficult.
- Warranties on used machines might not be transferable.
- Necessary parts or accessories may not be available or included with the purchase.

OPTION #3: FINANCING A MACHINE

BENEFITS

- Allows you to manage your initial cash flow.
- You can get financing on a brand new machine.
- Most financing terms are "lease to purchase," meaning you will eventually own the machine.
- Financing can help you determine your company's profitability.

DRAWBACKS

- You might not be able to finance if you're a new business and have bad personal credit.
- You end up paying more in the end with the interest payments.

OPTION #4: RENTING THE EQUIPMENT

BENEFITS

- There's no significant investment required, just the rental cost.
- Low risk: if the machine breaks down, you're not responsible for repairing it.

DRAWBACKS

- You don't own the machine, so there's no resale value.
- Subjected to availability restrictions, meaning that a machine you need to rent may not be available when you need it.
- There can be limited machine options, which is especially true with gutter machines.

QUESTIONS TO ASK YOURSELF BEFORE BUYING A SEAMLESS GUTTER MACHINE

If you're still unsure of whether to invest in a portable seamless gutter machine, start by asking yourself some of the following questions to better gauge your business needs:



Can I afford a new machine? Or can I only afford one that is used?



Can I get approved for leasing or financing if I don't have the cash?



What gutter profile options do I want to offer to my customers?



What gutter size options do I want to offer to my customers?



Do I have a way to transport the portable gutter machine (truck, trailer, etc.)?



What machine accessories do I need, and how much will they add to the cost?



Does my business have a skilled employee who can run and maintain the gutter machine?



Do I have an enclosed trailer or area where I can store my machine to protect it from the elements?

BUYING A PORTABLE SEAMLESS GUTTER MACHINE FOR YOUR BUSINESS IS A GREAT BENEFIT TO LOOK INTO, ESPECIALLY IF YOU WANT TO TAKE CONTROL OF YOUR OWN PRODUCTION OR DIVERSIFY YOUR BUSINESS. BUT YOU WANT TO MAKE SURE YOU'RE BUYING THE RIGHT MACHINE WITH THE RIGHT ADD-ON OPTIONS THE FIRST TIME AROUND. KEEP IN MIND:

- The base price of a seamless gutter machine doesn't include any accessories or add-ons, which can increase the cost depending on the specific add-on choices you select.
- You'll need a trained operator to operate and maintain the machine.
- Make sure **new machines** offer what you want, such as warranties, sizes, gutter profiles, and controls.
- When purchasing **used equipment**, always see the machine in person and run material in every gutter profile and size.

As important as it is to understand how much a portable gutter machine costs, it's also critical that you consider what payment options are available to you that can help preserve your business' cash flow. Next, we'll talk about the pros and cons of financing your gutter machinery and equipment.

FINANCING MACHINERY FOR YOUR NEW GUTTER BUSINESS

Whether you're starting a new business in gutter installation, supplying "chop and drop" gutters, or you own an existing business in this industry: Cash flow is vitally important.

That said, some varying degree of investment is required for your business to have the gutter machinery needed to complete projects. And one of the best ways to ensure you have the necessary tools while still preserving your cash flow is to finance the equipment.

So, what is financing, what are the pros and cons, and how does it work when purchasing portable rollforming equipment? Let's discuss.

IN THIS CHAPTER

What is machinery and equipment financing?

Why finance your machine if you're a start-up business?

The process of applying for and receiving financing

WHAT IS MACHINERY & EQUIPMENT FINANCING?

We're sure everyone has an idea of what financing is. Specifically defined, financing is the process of providing funds for business activities, making capital purchases, or investing.

Financial institutions such as banks and third-party lenders are in the business of providing capital to companies so they achieve business growth and manage their cash flow.

As it applies to the portable rollforming world, nearly all financing options are lease-to-own, meaning that the machine will be owned by the initial borrower when all the loan payments of the agreed term are paid in full.

**IN 2023, OVER
\$2 TRILLION WAS SPENT
ON EQUIPMENT FINANCING
IN THE UNITED STATES.**

**85% OF U.S.-BASED
COMPANIES FINANCE THE
EQUIPMENT NEEDED FOR
THEIR BUSINESS.**

**89% OF THE COMPANIES
THAT DID FINANCE
EQUIPMENT SAID THEY
WOULD FINANCE AGAIN.**

HOW IT WORKS

Here's a quick rundown of how new business machine financing works:

1

The borrower will complete a one-page application and share information about their experience in business generally and/or any prior experience in rollforming. For reference, start-ups are defined as zero to two years in business.

2

The borrower's approval will include the terms and an interest rate matching their personal credit and business experience (some down payment may be required in the zero to one year category). Financing terms are commonly anywhere between 36 to 60 months.

3

The lender will pay the manufacturer on their required terms to have the machine(s) ordered or built.

4

The borrower can take the Section 179 tax deduction for the purchase of capital equipment.

SECTION 179 TAX DEDUCTION

The idea behind the Section 179 tax benefit is to encourage businesses to invest in their own growth. It serves as a direct incentive for small-to-medium-sized operations to expand by acquiring new equipment and technology, thereby fueling not just their growth, but the broader economy too.

Businesses can deduct the full cost of qualifying equipment from their gross income for the tax year, offering a substantial reduction in their annual tax

burden. This, in turn, enhances cash flow and grants businesses increased purchasing power, allowing for reinvestment in other areas or purchasing additional equipment, materials, promotional assets, etc.

Compared to a bonus depreciation write-off over several years, Section 179 allows you to take the full tax benefit as one write-off for the current tax year. There are many other benefits to taking the Section 179 deduction, which we go over below.

EXPENSING THE ENTIRE COST

Section 179 allows businesses to deduct the full purchase price of qualifying equipment in the year it is acquired rather than depreciating it over several years. This can provide a significant cash flow advantage by reducing taxable income and tax liability.

DEDUCTION LIMIT

For the tax year 2025, the deduction limit for Section 179 is \$1,250,000. This means you can deduct up to \$1,250,000 of qualifying equipment expenses from your taxable income.

BONUS DEPRECIATION

Businesses can also take advantage of bonus depreciation once the Section 179 cap is reached, so you're not giving up anything by using Section 179. Businesses can deduct up to 100% of the cost of qualifying equipment that exceeds the Section 179 deduction limit on both new and used equipment.

INCREASED EXPENSE CAP

The business equipment purchase cap for Section 179 has been increased to \$3,130,000 for the tax year 2025. If your equipment purchases exceed this limit, the deduction available under Section 179 is reduced.



Note: As always, consult with a tax professional to ensure compliance with tax regulations and to take full advantage of Section 179's benefits.

ELIGIBILITY FOR SECTION 179

To qualify for the Section 179 tax deduction, businesses must meet certain criteria, which are explained below.



TYPE OF BUSINESS

Sole proprietors, partnerships, and corporations can all benefit from Section 179, including most businesses that pay taxes.

PROFITABILITY

Only profitable businesses can take full advantage of Section 179 since it's a deduction that applies against profits. If you've purchased an \$80,000 machine but only generated \$50,000 in revenue for year, you won't qualify. However, you can apply bonus depreciation.

EQUIPMENT USAGE

The equipment must be used for business purposes more than 50% of the time to qualify for the deduction.

ACQUISITION

Purchased, leased, or financed equipment and software are eligible, provided they are used in the business by the end of the year.

PURCHASE OR LEASE

Only equipment purchased or leased and put into service during the tax year can qualify.

WHY FINANCE YOUR MACHINERY IF YOU'RE A START-UP BUSINESS?

Surprisingly, the most common challenge for new businesses in their first two years is keeping enough working capital on hand to operate and grow their business. That's why financing is available to help alleviate some of those woes.



Let's go through some more of the benefits and drawbacks to think about when you're determining if financing machinery is right for you.

A white square containing an orange double quote icon.

**THE MOST COMMON
CHALLENGE FOR NEW
BUSINESSES IN THEIR FIRST
TWO YEARS IS KEEPING
ENOUGH WORKING CAPITAL
ON HAND TO OPERATE AND
GROW THEIR BUSINESS**

A white square containing an orange double quote icon.

BENEFITS OF FINANCING EQUIPMENT & MACHINERY FOR NEW BUSINESSES



MANAGE YOUR CASH FLOW

As we mentioned, control over the cash flow is vital for a new business. Securing funds from a lender for capital equipment and other hard assets keeps your cash available for materials, overhead, business development, and payroll. Financing can help your business maintain a positive cash flow.



FIXED RATE

Equipment Finance Agreements (EFAs) are all fixed interest rate for the duration of the term. This helps to budget and prepare for all future payments. Also, fixed rates will never change and are unaffected by rumblings in the economy or the stock market.



TAX ADVANTAGES

There are several tax write-offs available when purchasing capital equipment, regardless of whether you pay cash or finance. This should be discussed with your accountant, as many situations are unique to the individual business structure, location, and profitability. Section 179 Tax Deductions can apply to machine and office equipment purchases. Depreciation deductions may also apply.



FINANCING HELPS DEVELOP CREDIT FOR BUSINESSES

After you receive your first loan, your business starts building the credit that may be needed as your operation grows. Financing is predominantly reported to business credit reporting agencies, such as Dun and Bradstreet, PayNet, Experian Business, etc., as opposed to being classified as personal debt.



NO ADDITIONAL COLLATERAL REQUIRED

A bank will likely cross-collateralize your loan and secure it with what is known as a blanket lien on your business. Equipment Finance Agreements and \$1 Buy Out Capital leases often use only the machine you are financing as collateral. This is known as an asset-specific lien.

DRAWBACKS OF FINANCING EQUIPMENT & MACHINERY FOR NEW BUSINESSES



JUDGED ON PERSONAL FINANCES

Loans for new businesses are based on the personal credit standing of the business owner/borrower, as there is not a past business credit history for the company.



EARLY BUYOUT LIMITATIONS

New businesses often don't have the flexibility to pay off the financing early without any penalty.



HIGHER INTEREST RATE

Typically, the interest rate for a start-up company is higher due to the lack of business history and business credit.



BORROWING LIMIT

Start-up approvals are also often limited to a maximum borrowing amount of \$100,000.

ALTHOUGH YOUR BANK MAY HAVE SAID NO TO YOU, FINANCING CAN STILL BE AN OPTION TO PURCHASE THE MACHINERY AND EQUIPMENT YOU NEED TO GROW YOUR BUSINESS. TO GAUGE IF FINANCING IS RIGHT FOR YOU, START BY ASKING YOURSELF THE FOLLOWING QUESTIONS:

- What gutter machinery and equipment do I need for my business to be profitable?
- How much working capital do I have to start with? What categories will it cover?
- Am I able to afford to buy a machine outright? Would that stretch my cash too thin?
- What is my credit score?
- Do I foresee my business having enough work to cover monthly payments after all overhead costs?

Once you've purchased your portable gutter machine and reviewed financing options, what happens next? As a new machine owner, it's important that you understand the shipping process, how to get the most out of your machine through training, and how to keep your machine running a long time with routine maintenance.

NTM'S POST-SALES SUPPORT

SHIPPING, UNPACKING, TESTING, AND MACHINE OPERATION BEST PRACTICES

So here we are: you've done your research into portable gutter machines, figured out which one is best for you and your business needs, and made a deposit. What happens next?

You've already put a lot into purchasing your new machine, preparing to be a new machine owner, and understanding the benefits of using portable rollforming machinery.

If you choose to buy your gutter machine with New Tech Machinery (NTM), here's the level of service and support you can expect as a portable rollforming machine owner and user.

IN THIS CHAPTER

The shipping process

Receiving and unpacking your machine

Getting set up with machine training

Best practices of maintaining your seamless gutter machine

WHAT TO EXPECT DURING SHIPPING

Once you've made any necessary final payments or deposits, and your machine is in production, it's time to think about shipping. Let's discuss what you can expect during the shipping process, including shipping costs and how we prepare machines.



Shipping can vary from manufacturer to manufacturer, so it's essential to inquire about the details ahead of time. At New Tech Machinery, we use specific methods to ship our machines, and there are some details like cost, shipping locations, and unpacking that are only applicable to our machines.

SHIPPING PRICES AND METHODS

Typical shipping costs may depend on a few factors: distance, size, speed, and weight. Pricing varies depending on the equipment, where it's going, and the transportation method used. At New Tech Machinery, we price our shipments by volume (cubic feet). We do our best to try to combine our customer's shipments, to help keep the price of shipping lower.

The price of shipping varies depending on which method you use like airfreight or trailer. Some methods of shipping (shown below) will be more expensive than others, which is often based on finding the best carrier for shipping the equipment and how to best take that equipment to its location, especially if it's going overseas.



AIRFREIGHT



CONTAINER SHIPPING



INSIDE A TRAILER



ON A FLATBED TRAILER

For international deliveries, it's usually a more expensive process since more documentation is required and it usually takes longer. You can always reach out to one of our rollforming specialists for specific details on international shipments and machine purchases.

Also, please note that international customers will also be responsible for any additional taxes, duty fees, and destination charges incurred during the shipping process or when processing final receipt.

PREPARATION AND PACKAGING OF ROLLFORMING MACHINES

To make sure your gutter rollforming equipment and add-ons make it to you as safe as possible, we shrink-wrap the machine, including boxes of machine materials and accessories, and put padding around them during transportation. After it is shrink-wrapped, the shipping labels go onto the machine. If you order your machine trailer-mounted, we'll also include instructions on how best to get the machine out of the enclosed trailer, as well as place tags for the correct lifting points.

There are some different options offered for machine packaging. Typically they're shipped using:



A PALLET/SKID

The sides of the rollforming machine get wrapped with cardboard and then the whole machine is shrink-wrapped and set on a pallet for shipping, usually inside commercial-type trucks. This method helps for easy lifting and moving of the rollforming equipment and should only be used for shipping purposes, not as a permanent base or foundation for the machine. If you will be loading the machine onto your trailer, it's recommended not to use a pallet, as the machine gets mounted directly to the trailer's deck.



A CRATE

Shipping seamless gutter machines via a crate allows for better protection and less of a chance for damage to occur. All crates will have a built-in pallet or skid on the bottom for easy unloading with a forklift. Check with the machine manufacturer if there is an additional or extra charge for shipping via a crate.



A CONTAINER

Container shipping is a common option for international clients. Containers are available in either 20' or 40' lengths depending on the size and amount of equipment to be shipped.

HOW TO RECEIVE & UNPACK YOUR MACHINE

After preparing, packaging, and shipping your machine, there are a few important things for you to know about picking up and unpacking your portable gutter machine. Here's what we recommend:



BRING CORRECT PAPERWORK

When you pick up your shipment at the freight terminal, you'll want to have the proof of shipment paperwork that distinguishes you as the machine owner or purchaser. Other paperwork that may come in handy includes documentation of purchase, tracking labels, and container seal verification papers.



MAKE OFFLOADING ARRANGEMENTS

Once the machine arrives at the specified destination, you'll need to make sure that someone is there in person to unload the machinery and transport it to the place where it will usually be used. Having someone present to unload the machine also helps to inspect the rollforming equipment for any possible damage. You'll also want to make sure you have a loading dock located at the shipping location or make arrangements to use a flatbed tow truck.



BRING PROPER EQUIPMENT

For overseas shipments, if it's shipped inside a crate or a container, you'll want to make sure you have the proper equipment to get it out of the container or crate. Equipment you may need includes proper hand tools, unloading equipment like a forklift, and transportation to take the machine to its final destination.

CHECKING FOR DAMAGE

Freight companies are notorious for damaging items during shipments or when loading items in and out of the container. This is why you need to inspect the packaging and the machine for visible and hidden damage before you sign for the package and before the delivery driver leaves.



Upon delivery, your first step is to inspect the machine before unwrapping it. Look for any damage that may have occurred during the shipping process. If you notice any visible damage, it's crucial to file a claim with the shipping company immediately. **Don't sign off on anything until you've completed your preliminary inspection.** If you see anything, note it on the shipping form and take photos. This initial inspection is key to protecting yourself from potential shipping-related issues. Contact the shipping company or NTM's service department if it was shipped directly from NTM if you find any evidence of damage.

UNPACKING YOUR MACHINE

Once you get the machine and ensure there's no damage to it, there are some recommended steps to take as you unpack your portable gutter machine.



1

UNWRAP AND UNLOAD

After inspecting the delivery, proceed to unload and unwrap your machine. It's essential to inspect the equipment thoroughly before signing any trucking paperwork. In cases of internal damage or issues not visible from the outside, documentation is crucial. Remember, any damage found later might not be covered. Take several pictures and make notes, so that when you contact the NTM service department you can readily provide all the information.

2

CONFIRM ALL ITEMS

Check your invoice and ensure that every item listed has been received. This includes not only the main machine but also any accessories or additional parts that were part of your order. If anything is missing, note it on the form and immediately contact the shipper (NTM or an NTM distributor).

3

LOOK INSIDE THE MACHINE

Inspect the machine's internal components. Look for loose hardware or any signs of damage.

4

RESOLVE ANY ISSUES

In case of any discrepancies or issues, reach out to the New Tech Machinery service team. Be prepared to provide documentation and photos of any damage for a smoother resolution process. Do not wait to do this, as you have a limited amount of time to report damaged parts that need replacement.

5

REINSTALL THE COVERS

If everything is in order, reinstall the covers on your machine.

TESTING YOUR MACHINE

Once you've looked over the machine and verified the rollformer is how it should look, it's time to test it out and make sure it functions properly. Follow these steps for testing your new NTM portable gutter machine:

1

BEFORE YOU TEST THE MACHINE

We strongly recommend that you read our manual and understand the “ins and outs” of your new machine before you use it/test it. If you have any questions or need help understanding something, call New Tech Machinery or your nearest distributor.

2

HAVE AN EXTENSION CORD READY

Have a 10-gauge extension cord ready for testing (12-gauge cords work too—refer to the machine manual for specifications on extension cords you can use).

3

PLUG IN THE MACHINE

Plug the machine in and try all of the functions without any material in the machine: forward, reverse, jog, and run.

4

PREPARE A METAL SAMPLE

If everything looks to be working, prepare a sample piece of metal coil. Specific instructions for the coil size depends on the machine, so please refer to the rollforming machine's manual.

5

FEED THE COIL

Once you've prepared the coil, feed it into the machine and JOG it through until it exits the shear. Be very careful and jog the material all the way through the shear/guillotine, as it could hang up on the shear and jam the machine.

6

CHECK FOR IMPERFECTIONS

Finish running the piece and check it for straightness, marks, scratches, or other imperfections. If there is a problem, refer to the troubleshooting section of the manual first. If that doesn't solve your problem, please contact NTM.

7

PUT THE MACHINE AWAY

Remove the rollformer from the skid, place the machine where it will usually be used (trailer, platform, etc.) and be sure to secure it using the specified instructions.

8

ALL DONE

The machine is ready to go!

*** Note:** We recommend waiting for professional training before operating the machine, especially if you're unfamiliar with its functioning. If you've scheduled a training, then wait until the trainer arrives before operating the machine.

TRAINING AND LEARNING ABOUT YOUR MACHINE

Depending on your experience, we strongly recommend training for new owners on new rollforming machines, which is commonly offered by the machine manufacturer. NTM offers one free training session with the purchase of a new machine, held at our facility in Colorado, but we can also do field training upon request. If you are going to be operating the portable gutter machinery on a day-to-day basis, training can be very beneficial, especially for people who are new to this industry or are unfamiliar with using portable rollforming machinery.



Training sessions include learning about:

**SAFETY PROCEDURES
WHEN USING YOUR
PORTABLE ROLLFORMER**

**HOW TO OPERATE
YOUR PORTABLE
GUTTER MACHINE**

**THE ENTIRE SCOPE OF THE
ROLLFORMING PROCESS**

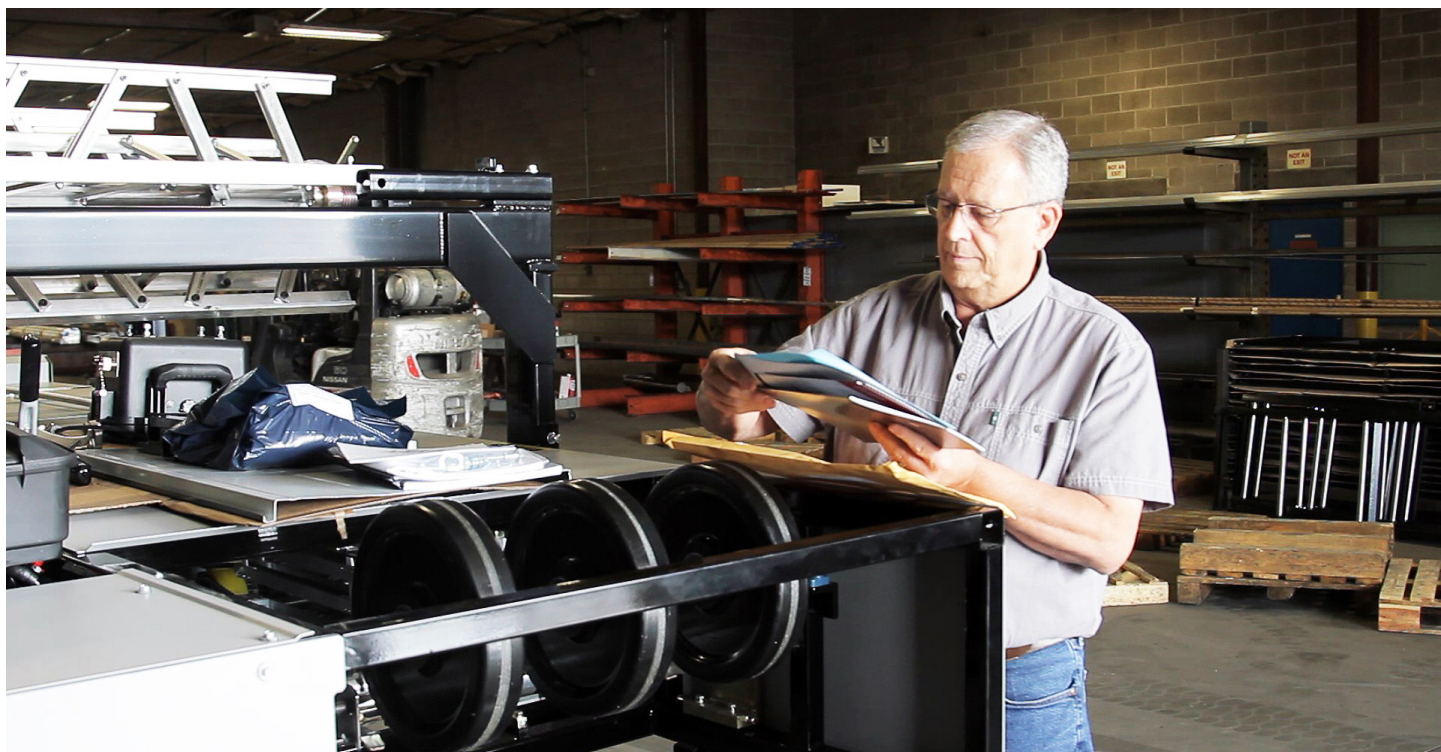
**DIFFERENT TYPES AND
GRADES OF MATERIALS**

**WHAT EACH
ROLLFORMING MACHINE
COMPONENT DOES**

**BEST PRACTICES TO
KEEP IN MIND WHEN
MAINTAINING YOUR
MACHINE**

REGISTERING YOUR WARRANTY

Register your machine warranty, either by filling out the paper you receive in the document packet with your machine or on our website.



“

WE BACK OUR MACHINES WITH A THREE-YEAR LIMITED PARTS (INCLUDING ELECTRICAL)/THREE YEARS LABOR WARRANTIES. OUR INTERNATIONAL WARRANTY ALSO COVERS THREE YEARS LIMITED PARTS (INCLUDING ELECTRICAL) BUT EXCLUDES FREIGHT. WE ALSO OFFER LIMITED LIFETIME WARRANTIES ON OUR DRIVE ROLLERS AGAINST SEPARATION.

”

We back our machines with a three-year limited parts (including electrical)/three years labor warranties. Our international warranty also covers three years limited parts (including electrical) but excludes freight. We also offer limited lifetime warranties on our drive rollers against separation.

MACHINE MAINTENANCE

One of the best ways to keep your portable rollformer running at its best is to keep it cleaned, inspected, and properly maintained. Not only will your machine last longer, but it also improves the quality of the finished gutters. If you're using your seamless gutter machine daily, you'll want to make sure you check and clean it weekly. This can help keep your equipment in great condition so it won't need major service or repairs later. Making maintenance a part of your routine can help save you time and money in the future and ensure you catch any issues. Here are some common maintenance actions and machine owner best practices to keep in mind:



Avoid storing and/or transporting the machine with metal materials in the rollers or fed into the machine.



Check for any fluid or oil leaks, either from hydraulic systems or if your machine is powered by gas (like the BG7).



Inspect that all parts work the way they should and that nothing is damaged.



Inspect fuses, batteries, electrical connections, and controllers to make sure there are no shortages/wiring problems.



Make any necessary machine adjustments.



Check chain tension.



Keep the machine free of dust and debris.



Avoid storing the machine outdoors for long periods.

Refer to your machine manual for the specifics involved in maintaining your portable gutter machine. It includes routine and common maintenance procedures you can do on your own, timelines to perform each maintenance action, and recommended tools and lubricants.

A blue-tinted background image showing a large industrial machine, specifically a portable rollformer, in operation. The machine has various rollers and structural components visible. The entire image is overlaid with a semi-transparent blue layer.

**ONE OF THE BEST WAYS
TO KEEP YOUR PORTABLE
ROLLFORMER RUNNING
AT ITS BEST IS TO KEEP IT
CLEANED, INSPECTED, AND
PROPERLY MAINTAINED**



MACHINE SERVICE

Depending on how you use your portable rollforming equipment, prompt service and/or repair on your machinery can extend its life and maintain high-quality products.

While there are some common problems you can troubleshoot using the manual or by giving NTM a call, in certain situations you'll need the expertise of a service technician for assistance.

Common signs that your gutter machine may need service include:

Machine won't start

Machine won't drive metal coil

Machine won't cut material

Issues with the controller

Noises or vibrations are coming from the machine

If you think your machine needs service, contact our facility. Be ready to send pictures or videos of the problems so that we can see the issues you're experiencing. Also, have your machine's serial number to provide the service team member. If it's one of our gutter machines, we'll ask for the serial number and model of your portable rollformer.

ONCE YOUR MACHINE ARRIVES. REMEMBER:

- Check for damage that may have occurred during shipping before unboxing your machine and follow any recommended manufacturer guidelines on how to safely unload your seamless gutter machine.
- Check the inside of the machine for loose parts or damage.
- Test your machine prior to operating it at a job site to ensure it's in good working order and check for any signs of hidden damage.
- For new machine owners, training is the best way to get hands-on education on how to safely use your gutter machine, troubleshoot common problems, and change profiles.
- Keep up with maintenance on your seamless gutter machine and understand the signs of when your machine may need service to ensure your machine lasts a long time and produces quality gutters.

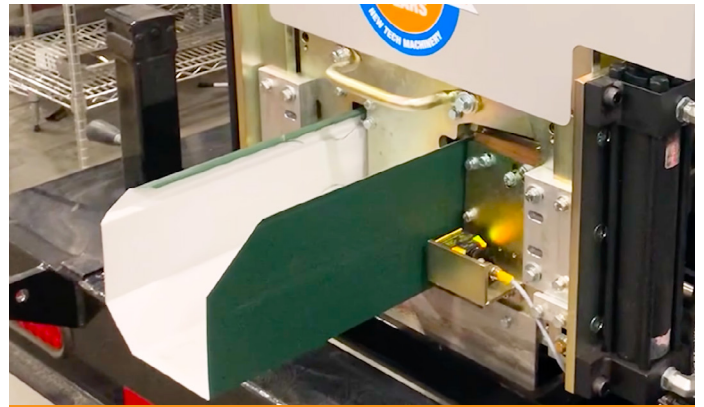
FINAL THOUGHTS

If you're interested in learning more about purchasing one of our seamless gutter machines, contact New Tech Machinery today to get a quote. So we can better serve you, it's helpful to have already done the following:



READ

Read and research content and videos on our site pertaining to what machine and add-on options you would use the most and would like to purchase.



RESEARCH

Research your market on what profiles are popular and what customers in that area would use.



TALK TO US

Talk to our rollforming specialists with any questions you have, or for help in buying the right gutter machine for your business needs.



GET FUNDING

Have funding in place, either through financing options or pay all at once. You'll want to be sure you pay with a way that works with your business plan.

For more information on portable rollforming machinery, and the metal construction industry, check out our resources section with [blogs](#), [videos](#), [downloads](#) and [more!](#)