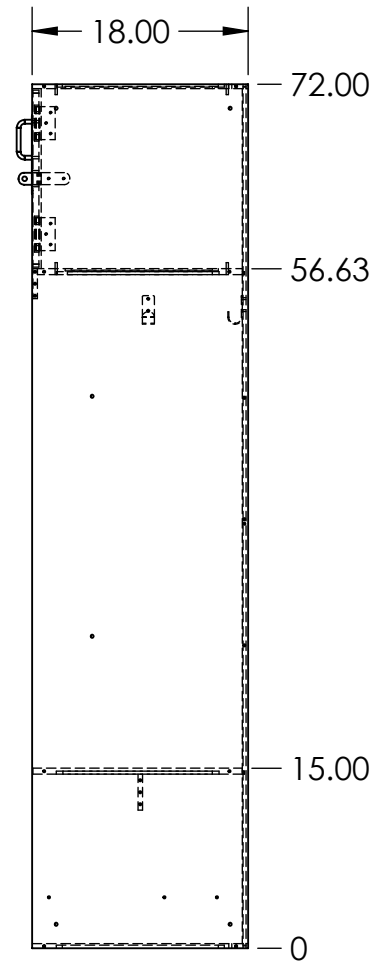
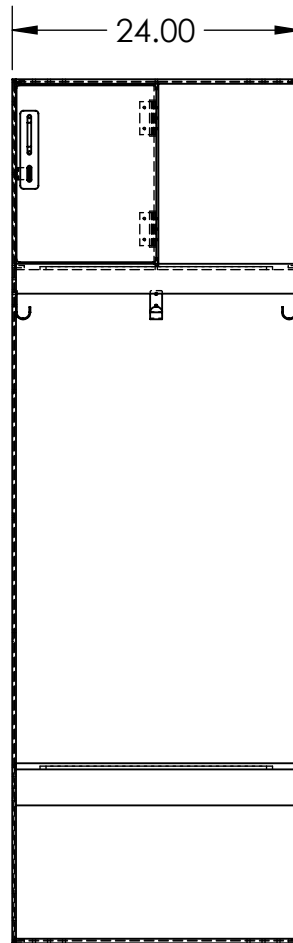
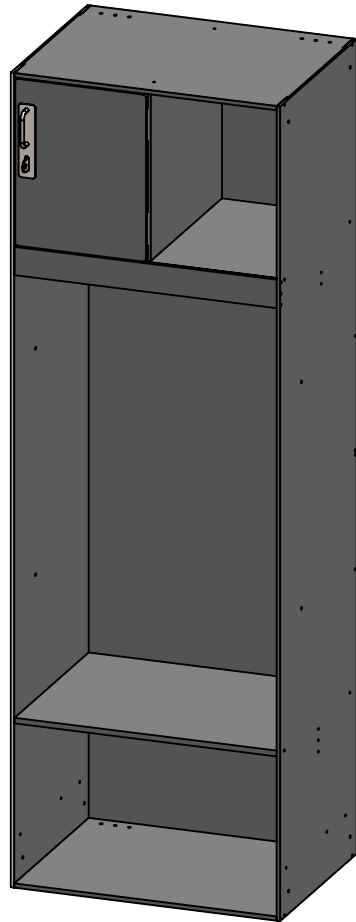


MATERIAL THICKNESSES

SIDES & BACK : 5/16" (7.9MM)
 TOP, BOTTOM, SHELVES : 3/8" (9.2MM)
 DOORS & SEATS : 1/2" (12.5MM)



24X18X72 ATHLETIC STRAIGHT OPEN BOTTOM LOCKER MADE FROM VARYING THICKNESSES OF FORMICA COMPACT (PHENOLIC) MATERIAL

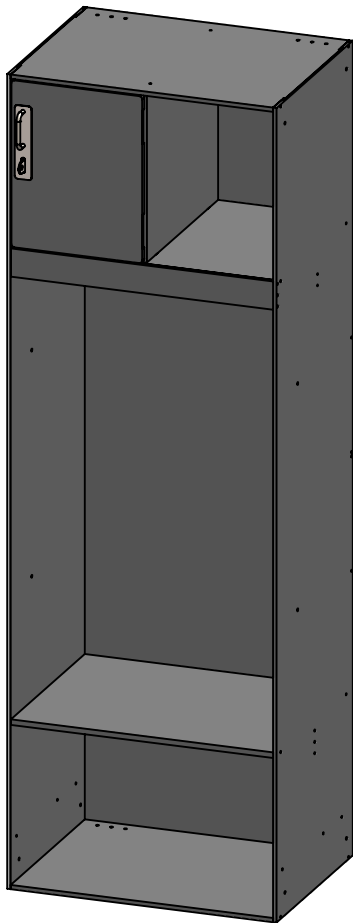
ALL FASTENING HARDWARE, HINGES AND HOOKS ARE STAINLESS STEEL

LOCKER DETAILS: 3X SINGLE HOOKS, HASP LOCK, UPPER CUBBY, OPEN BOTTOM

DIMENSIONS ARE IN INCHES TOLERANCES: FRACTIONAL $\pm 1/16"$ ANGULAR: MACH ± 1 BEND ± 1 ONE PLACE DECIMAL $\pm .1$ TWO PLACE DECIMAL $\pm .05$ THREE PLACE DECIMAL $\pm .005$ DO NOT SCALE DRAWING		PROPRIETARY AND CONFIDENTIAL THE INFORMATION CONTAINED IN THIS DRAWING IS THE SOLE PROPERTY OF PIVOTAL HEALTH. ANY REPRODUCTION IN PART OR AS A WHOLE WITHOUT THE WRITTEN PERMISSION OF PIVOTAL HEALTH SOLUTIONS IS PROHIBITED.	Pivotal Health Solutions 3003 9th Ave SW, Watertown, SD 57201 pivotalhealthsolutions.com ph. 605-753-0110 fax. 605-882-8398
MATERIAL Formica Compact (Phenolic)		FINISH	Rev: A
DESC. Athletic Straight Open Front 24x18x72 Phenolic Locker			
PART NUMBER - NAME Assem (ASO xx) Phenolic			
SIZE: A	SCALE: 1:24	DATE: 8/10/2020	WEIGHT: 82.55lbs ENGR. ET SHEET 1 OF 2

REVISIONS

ECO	Rev.	Engineer	Date	Approval	Date	ALE/AAL	Date	Changes
	A	SWH	7/22/2020					RELEASE



(A)

DIMENSIONS ARE IN INCHES TOLERANCES: FRACTIONAL $\pm 1/16"$ ANGULAR: MACH ± 1 BEND ± 1 ONE PLACE DECIMAL $\pm .1$ TWO PLACE DECIMAL $\pm .05$ THREE PLACE DECIMAL $\pm .005$ DO NOT SCALE DRAWING		PROPRIETARY AND CONFIDENTIAL THE INFORMATION CONTAINED IN THIS DRAWING IS THE SOLE PROPERTY OF PIVOTAL HEALTH. ANY REPRODUCTION IN PART OR AS A WHOLE WITHOUT THE WRITTEN PERMISSION OF PIVOTAL HEALTH SOLUTIONS IS PROHIBITED.	Pivotal Health Solutions 3003 9th Ave SW, Watertown, SD 57201 pivotalhealthsolutions.com ph. 605-753-0110 fax. 605-882-8398
MATERIAL Formica Compact (Phenolic)		FINISH Rev: A	
DESC. Athletic Straight Open Front 24x18x72 Phenolic Locker			
PART NUMBER - NAME Assem (ASO xx) Phenolic			
SIZE: A	SCALE: 1:24	SAVE: 8/10/2020	WEIGHT: 82.55lbs
ENGR. ET		SHEET 2 OF 2	