



atp Flightdocs®



Flightdocs®

The end-to-end aviation maintenance, inventory, and operations software solution for a fully integrated flight department

Maintenance Tracking

Flightdocs Maintenance is the answer to efficiently managing and tracking your maintenance for a single aircraft or an entire fleet.

Take control of your data with a platform built to reflect airworthiness, facilitate smooth communications, automate your workflows, and keep your aircraft flying without interruptions.

Highly visual dashboards deliver key data in focused comprehensive views, making it easy to instantly evaluate the status of all aircraft and equipment and take quick action on important events.

Electronic workflows have never been easier. The system delivers flexible and streamlined tools to assign, update, sign off, and create documentation, in accordance with the FAA Advisory Circular 120-78A.

The design and presentation of data simplifies your experience, minimizes learning curves for your team, and dramatically increases efficiencies, reduces costs, mitigates risks, and protects revenue.

atp Flightdocs
1-800-747-4560
Support Ticket
Holding Box 0

Home
Maintenance
Inventory
Operations
Documents *New*

Maintenance Information Center

☐ Include Optional Items

Maintenance Items

4

0

16

Past Due & AOG

Within Tolerance

Coming Due

Non-Routine Maintenance

7

0

1

Discrepancies

NEFs

MELs

Logbooks & Work Orders

1

6

eLogbooks

Work Orders

Workflow

0

0

Review Required

Assigned

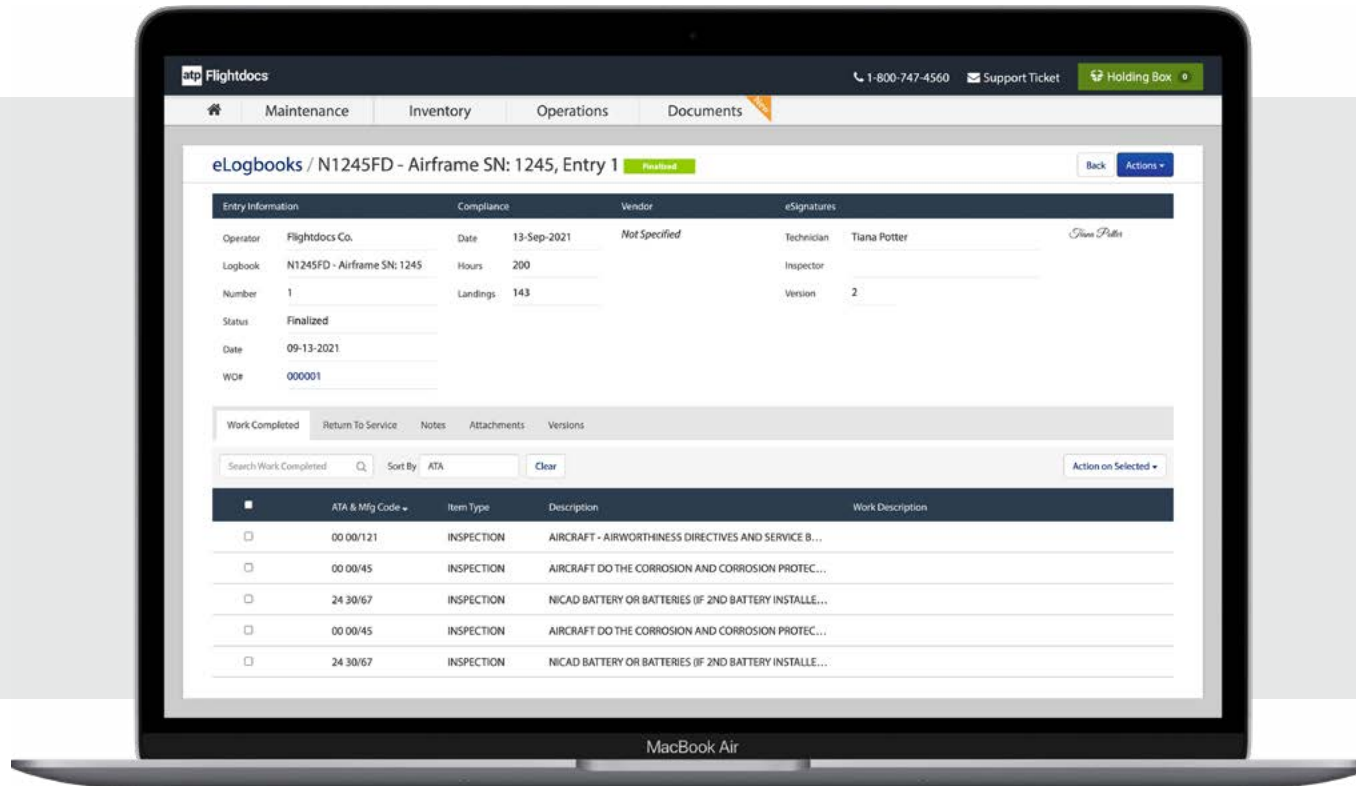
Fleet Information

☐ Show Calendar Only

Search Aircraft
Select filter...
Sort By Aircraft
Clear
Filter

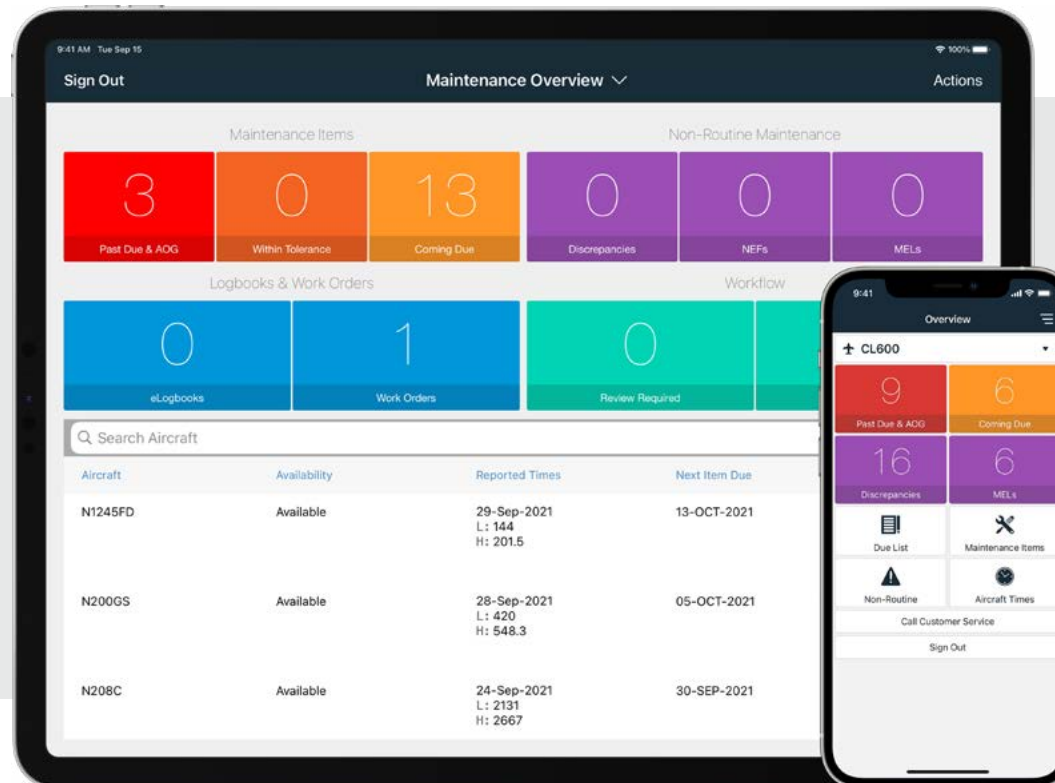
<input checked="" type="checkbox"/>	Aircraft	Reported Date	Reported Hours	Reported Landings	Next Item Due	Availability	Action	Status
<input checked="" type="checkbox"/>	▶ N1245FD	22-SEP-2021	201.5	144	02-OCT-2021	Available	Due List	0-10 Days
<input checked="" type="checkbox"/>	▶ N200GS	23-SEP-2021	546.3	419	03-OCT-2021	Available	Due List	AOG
<input checked="" type="checkbox"/>	▶ N208C	14-SEP-2021	2667	2131		Available	Due List	AOG
<input checked="" type="checkbox"/>	▶ N300CL	12-SEP-2021	247	130		Available	Due List	10+ Days
<input checked="" type="checkbox"/>	▶ N350AB	08-SEP-2021	6520	6220	15-SEP-2021	Available	Due List	Past Due
<input checked="" type="checkbox"/>	▶ N407B	14-SEP-2021	23	11	30-SEP-2021	Available	Due List	0-10 Days

Electronic Signature & Logbooks



The fully electronic, completely paperless workflow is made possible by eSignature, which streamlines your compliance process. eLogbooks delivers advanced controls, full customizability, a streamlined workflow, and industry standards for the backup and uncompromising security of your maintenance records.

Native Mobile Apps



On the road or in the hangar, our native mobile apps are designed to provide your maintenance team and crew secure and reliable access to your data and up-to-date information, from anywhere in the world. Reduce paperwork, eliminate duplicate tasks, and employ a faster process to update and sign off records in real time.

Inventory Management

Flightdocs Inventory delivers visibility and functionality to manage purchasing and the movement of parts throughout your operation.

The inventory overview delivers a comprehensive snapshot for your parts and purchasing departments. Easily see key information such as expirations, low stock alerts, urgent requests and delivery statuses.

Flightdocs records every transaction and tracks the complete lifecycle of components. Key data, such as TSN and TSO metrics, is automatically calculated as parts move on and off aircraft.

Custom equipment management greatly simplifies the process of moving engines and major components on and off your aircraft. With minimal data entry, this tool dramatically increases efficiency and reduces errors.

The Flightdocs mobile app gives you instant access to inventory data from anywhere in the world. Our QR code scanning feature eliminates many manual steps and improves accuracy in your management process.

atp Flightdocs

1-800-747-4560Support TicketHolding Box 0

HomeMaintenanceInventoryOperationsDocuments *New*

Inventory Overview

Flightdocs Co.

0Expired Items

0Expiring Items

34Low Stock Items

2Items Out for Repair

3Quarantined Items

1Open Purchase Orders

1Open Exchange Orders

2Open Repair Orders

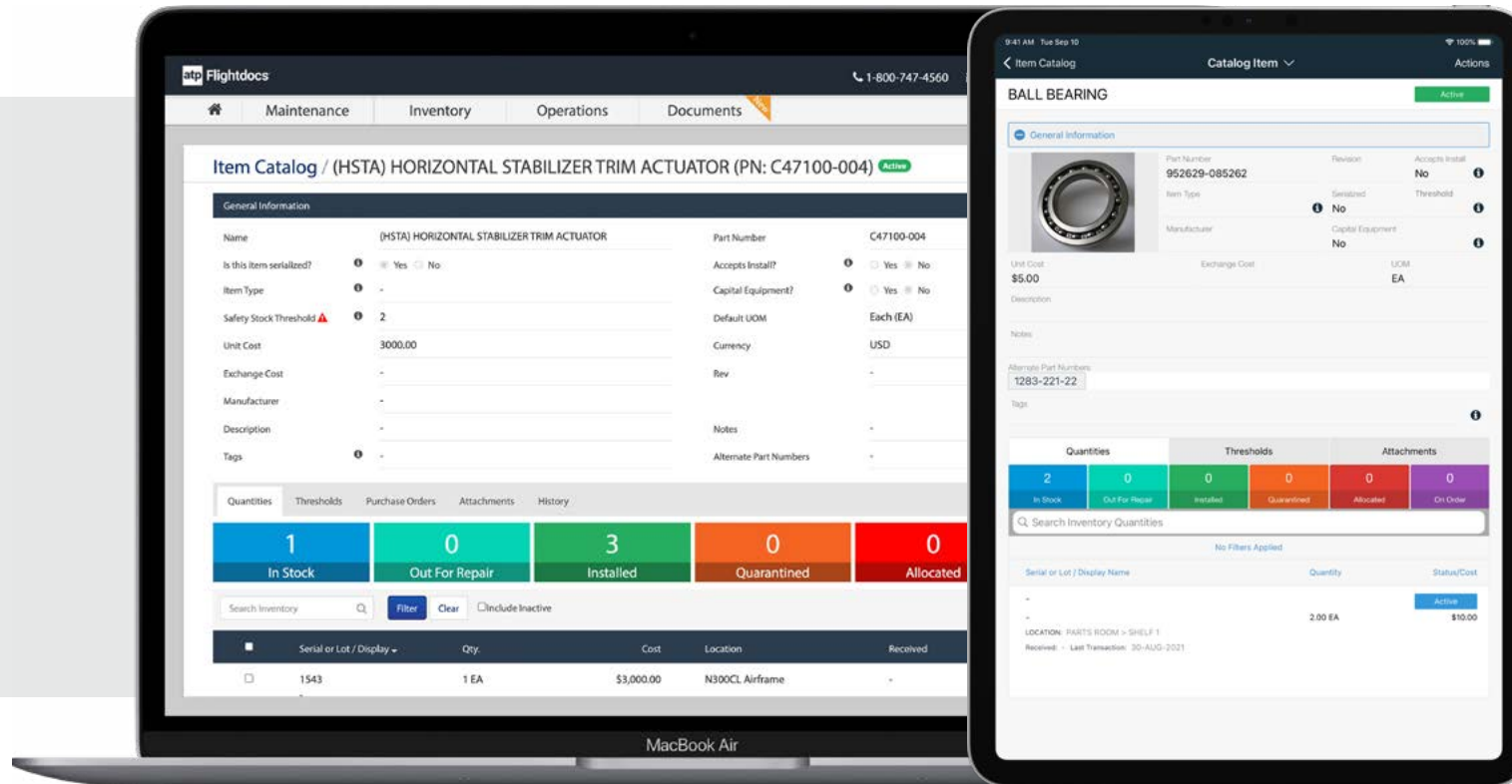
1Open Requests

1Past Due & Urgent Requests

Shipment Tracking

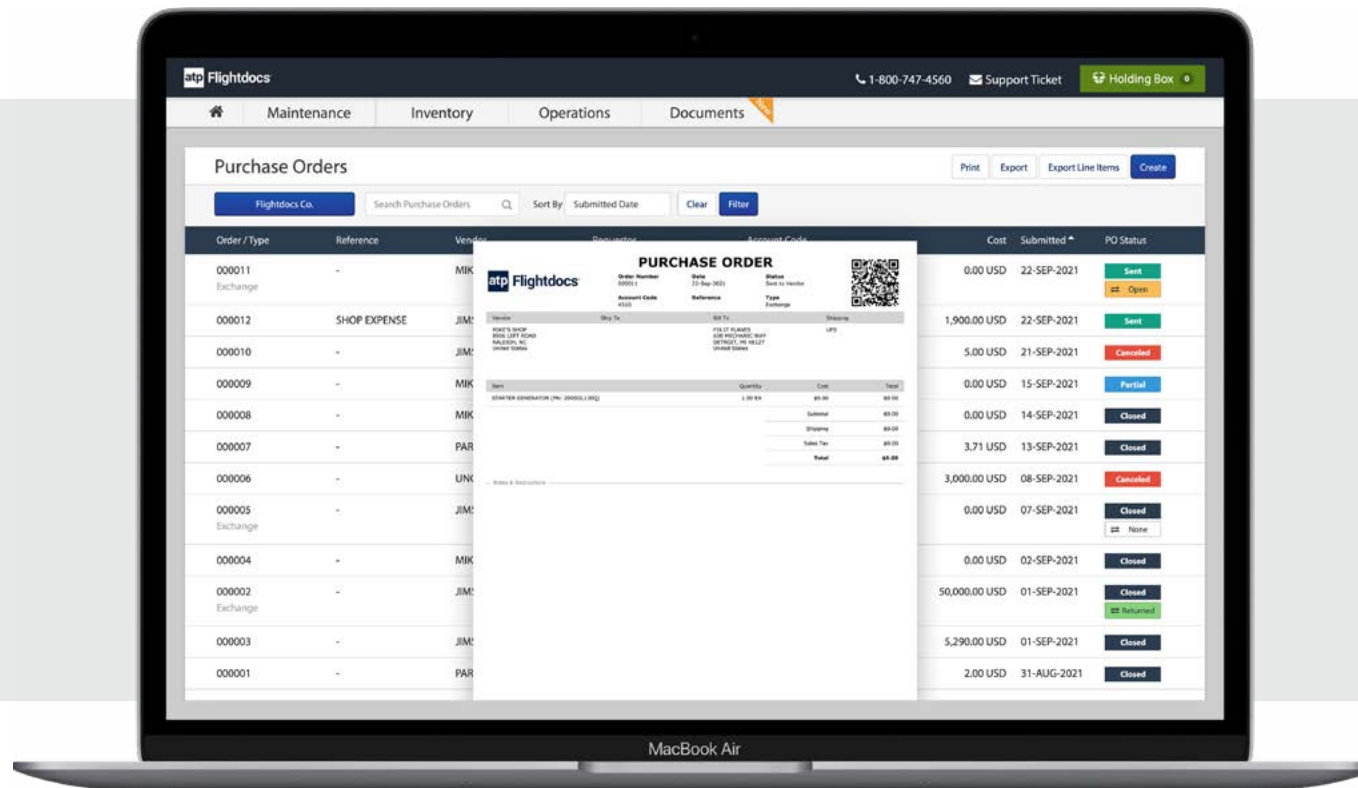
PO Number	Vendor	Part Number	Qty.	Ship Via	Tracking Number	
N12345-0031	Controllers Inc.	5425015	6	FedEx	4654656454	Track
N12345-0025	Stay Up Aviation	9874164-SD	10	FedEx	123456789456	Track
895	Stay Up Aviation	1203	1	FedEx	54685	Track
895	Stay Up Aviation	1112	1	FedEx	7845213LL	Track
895	Stay Up Aviation	0050	1	FedEx	6845OK	Track
893	Blue Sky Maintenance	0037000195054	1	FedEx	546546	Track

Custom Equipment Management



Flightdocs Inventory makes it possible to move major equipment (eg. engines, APUs, gearboxes, and props) on and off aircraft with ease. With no additional data entry required, easily transfer equipment along with historical compliance, documents, eLogbooks, work orders, and inventory.

Requests & Purchasing



Streamline your parts and service requisition process with fully electronic requests and purchase orders. Accurately track the movement of parts to and from vendors with core exchange and repair order management. Detailed reporting capabilities allow you to export key financial and activity data for analysis or import to third-party systems.

Flight Operations

Flightdocs Operations streamlines scheduling and dispatch workflows, enhances communication, and provides real time custom reporting.

Flightdocs Operations provides a single, streamlined, and secure platform to manage every aspect of your flight department. Operations brings you new levels of efficiency, visibility, and safety.

Build and manage your flight schedule, view resource availability, create trips, and manage services from one simple view. Fully integrated with maintenance, users can view the current status of each aircraft.

Identify available and qualified crew members for any flight using the streamlined resource view. Drag and drop crew members directly onto a scheduled flight to make assignments and create real time briefings.

Keep your crew in compliance with customizable flight log module, and pilot currency and duty time management. API integrations for flight planning and tax management extend your capabilities.

atp Flightdocs

1-800-747-4560Support TicketHolding Box 0

MaintenanceInventoryOperationsDocuments

Flight Schedule (UTC +0)

Today23-SEP-20217 DaysLegMX

Select FilterFiltersCreate

	Thu 23	Fri 24	Sat 25	Sun 26	Mon 27	Tue 28
N200GS GULFSTREAM G-200 AOG						
Maintenance	1 Item Due	1 Item Due				
N208C CESSNA 208B AOG		WO 000001 In Progress				
Maintenance		1 Item Due				
N300CL BOMBARDIER CL 300 10+ Days		PIC - GF SIC - SW #00006 (10:00) - (05:28) Z KAUS - KHOU				
Maintenance						
N350AB AIRBUS HELICOPTERS AS350B3 Past Due						
Maintenance		2 Items Due				
N407B BELL 407 0-10 Days						
Maintenance						
N50F Dassault Falcon 50 0-10 Days						
Maintenance						
N800XP BEECHCRAFT HAWKER 800XP 0-10 Days						
Maintenance		1 Item Due				

N300CL Trip #00006

Trip

Activity

Watchers 1

SW

Billing Code

Account

Contact

Briefing Status

Crew Not Briefed

Pilot In Command

Greg Diognardi (Leg 3)

Flight Attendant

Cynthia Medellin-Vicario (Leg 1)

Second In Command

Lee Brewster (Leg 2)

Legs

1 KAUS ▶ KHOU 23-SEP-2021 10:00 - 10:28 Z 0

2 KHOU ▶ KAUS 25-SEP-2021 05:00 - 05:28 Z 0

Total Passenger Count

0

Pilot In Command

Gaje Fuller (Leg 1)

Flight Attendant

Julia Townsend (Legs 2, 3)

Pilot In Command

Sam Wilson (Leg 2)

N208C Work Order #000001 In Progress

Start

23-SEP-2021 17:46 Z

End

27-SEP-2021 17:46 Z

2

Open

0

In Review

0

Signature Required

2

Complete

50%

Tasks Completed

0%

Hours Completed

MIKE'S SHOP

8906 LEFT ROAD

RALEIGH NC

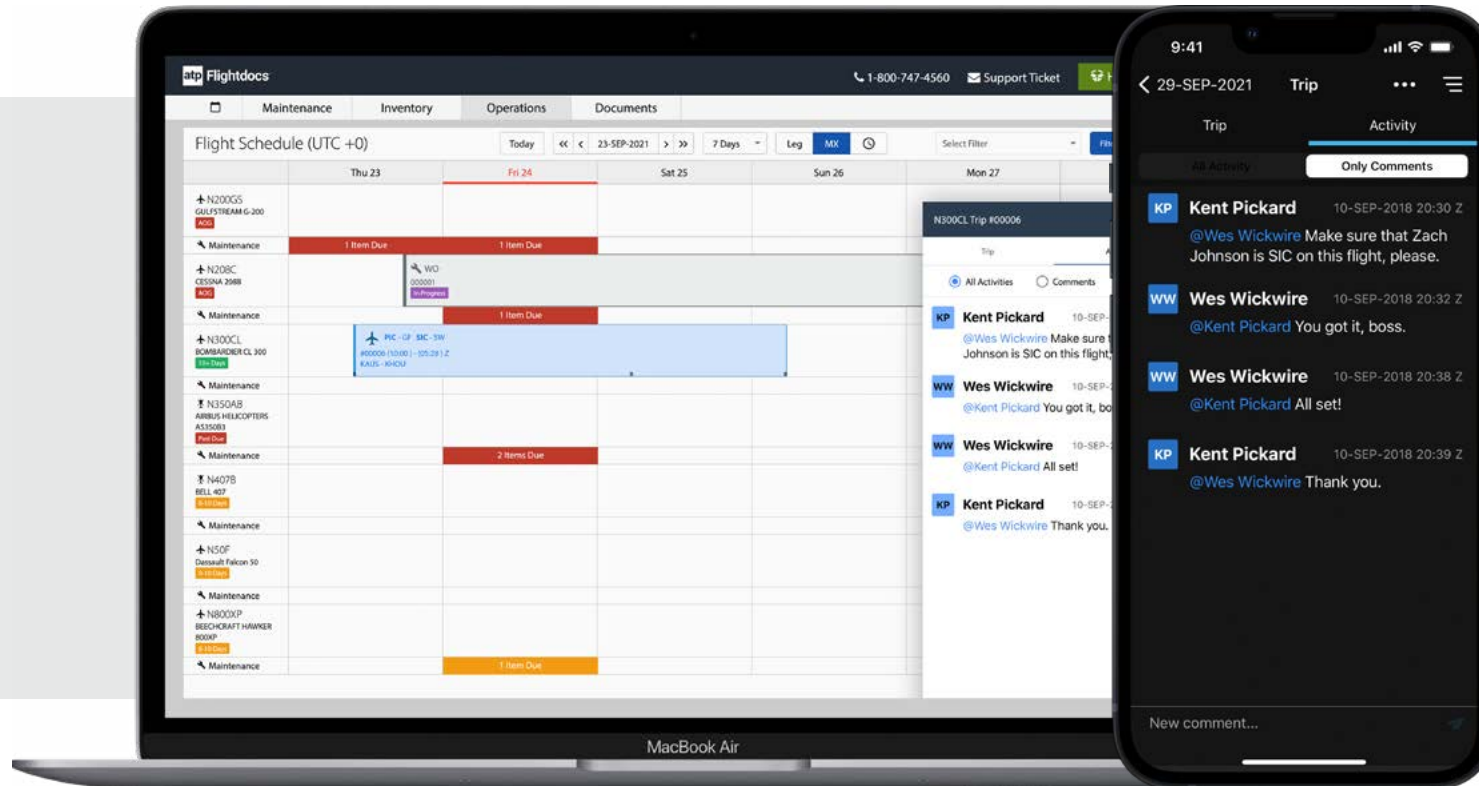
United States

Sam Wilson

sam@gmail.com

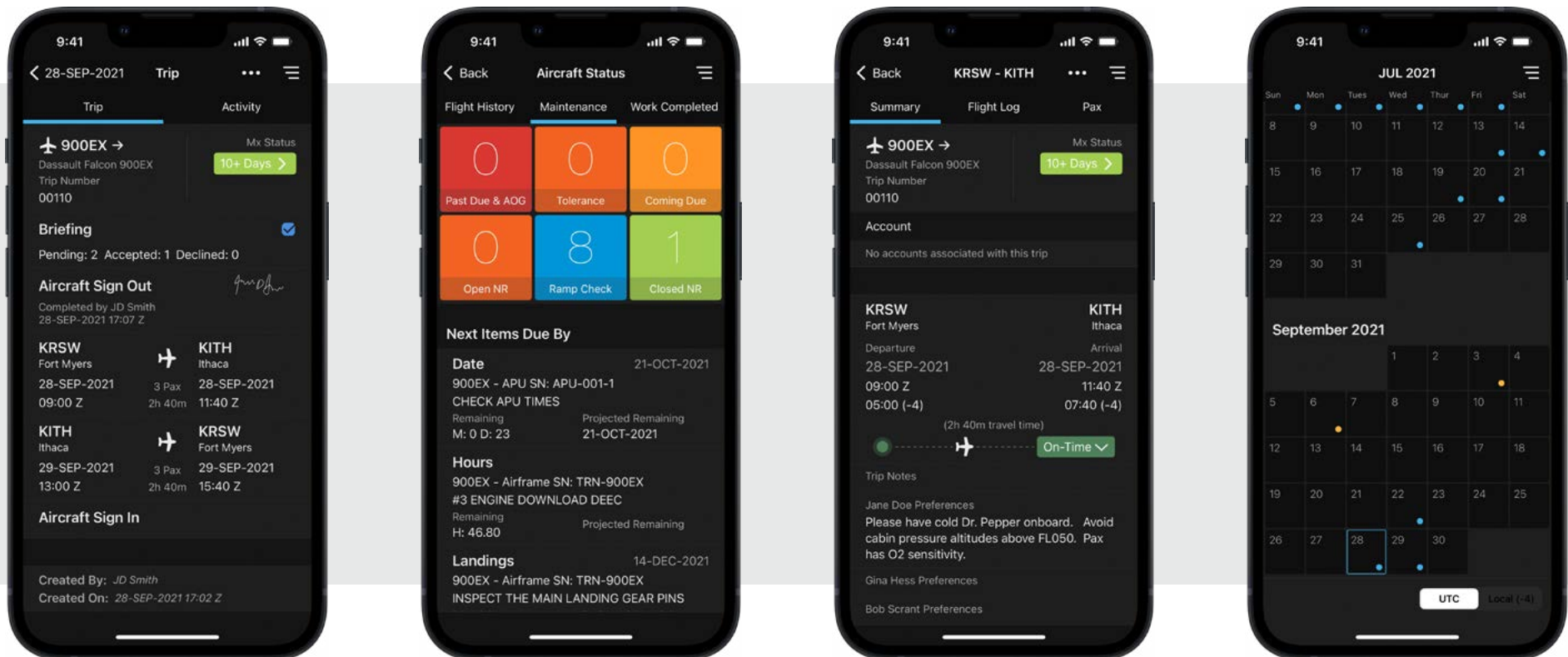
8827408064

Advanced Communication



Fd Connect is a secure, encrypted, and real time messaging platform for your schedulers, dispatchers, crew, and maintenance personnel. Easily view activities as they occur and chat in real time, eliminating broken communication and long email threads. Reduce duplication of work, data errors, and lag time for critical information.

Mobile Apps



The Operations native mobile app provides the crew with complete trip history and information along with real time aircraft maintenance status. This includes push notifications for trip briefings, aircraft sign out with electronic signature, discrepancy and MEL reporting, customizable flight logs, and more.

Aviation Hub Integration


Harness the power of the Aviation Hub and access your full library of aircraft tech pubs and regulatory content with a single click.

Access all your technical aviation manuals and publications for airframes, engines, propellers, wheels, brakes, batteries, starters, heaters, and other equipment, from inside Flightdocs.



Easy-to-use cross-functional and advanced search tools, the ability to access data across multiple publications and manufacturers make the Aviation Hub twenty times faster than competitors.


Aviation Hub performs complete AD searches for any aircraft, securely stores the relevant compliance information online, and allows users to print customized compliance reports.

Aviation Hub simplifies information access, increases productivity, and supports compliance and safety. Online and offline capabilities guarantee anytime access to all library content.

 Flightdocs


1-800-747-4560Support TicketHolding Box 0

MaintenanceInventoryOperationsDocuments 

 Libraries

ATP Aviation Hub | [Log In](#) | [Learn More](#)


N1245FD ✕

 N1245FD Pilatus PC-12/45


Airframe - PC-12/45Engine - PT6A-67BAir Conditioner 1Propeller

Component	Manufacturer	Model
Airframe	Pilatus Aircraft Ltd.	PC-12/45


Library Name

 Advisory Publications

Publication Title
Aviation maintenance alerts
Aviation maintenance alerts

 Airworthiness Bulletins

Publication Title
Aircraft Fuel Systems-Fuel System Ice Inhibitors
Engine Oil Pressure; Torque Transducer Oil Pressure Pipe P-Clamp Installation
Pilatus Aircraft Ltd Pc-12, Pc-12/45 & Pc-12/47 Aircraft- Main Landing Gear Special Bolts-Identification/,Contd.
To Alert Owner Or Operator Of Pilatus Aircraft Ltd. Pc-12 And Pc-12/45 Airplanes From Manufacturer Serial,Contd.
To Alert Owner Or Operator Of Pilatus Aircraft Ltd. Pc-12 And Pc-12/45 Airplanes With Manufacturer Serial Contd.

 Aviation Hub


Username

Username

Password

Password

Log In

Don't have an ATP Aviation Hub Account?
[Learn more about the ATP Aviation Hub™](#) 

Edit Component Mapping

Issue Number	Effective Date
43-16A ALERT 335	01-Jun-2006
43-16A ALERT 287	01-Jun-2002

Issue Number	Effective Date
CE-13-29	17-Apr-2013
CE-17-13	19-May-2017
2007-22	29-Aug-2007
CE-02-15	13-Feb-2002
CE-03-18	22-Jan-2003

Technology & Security



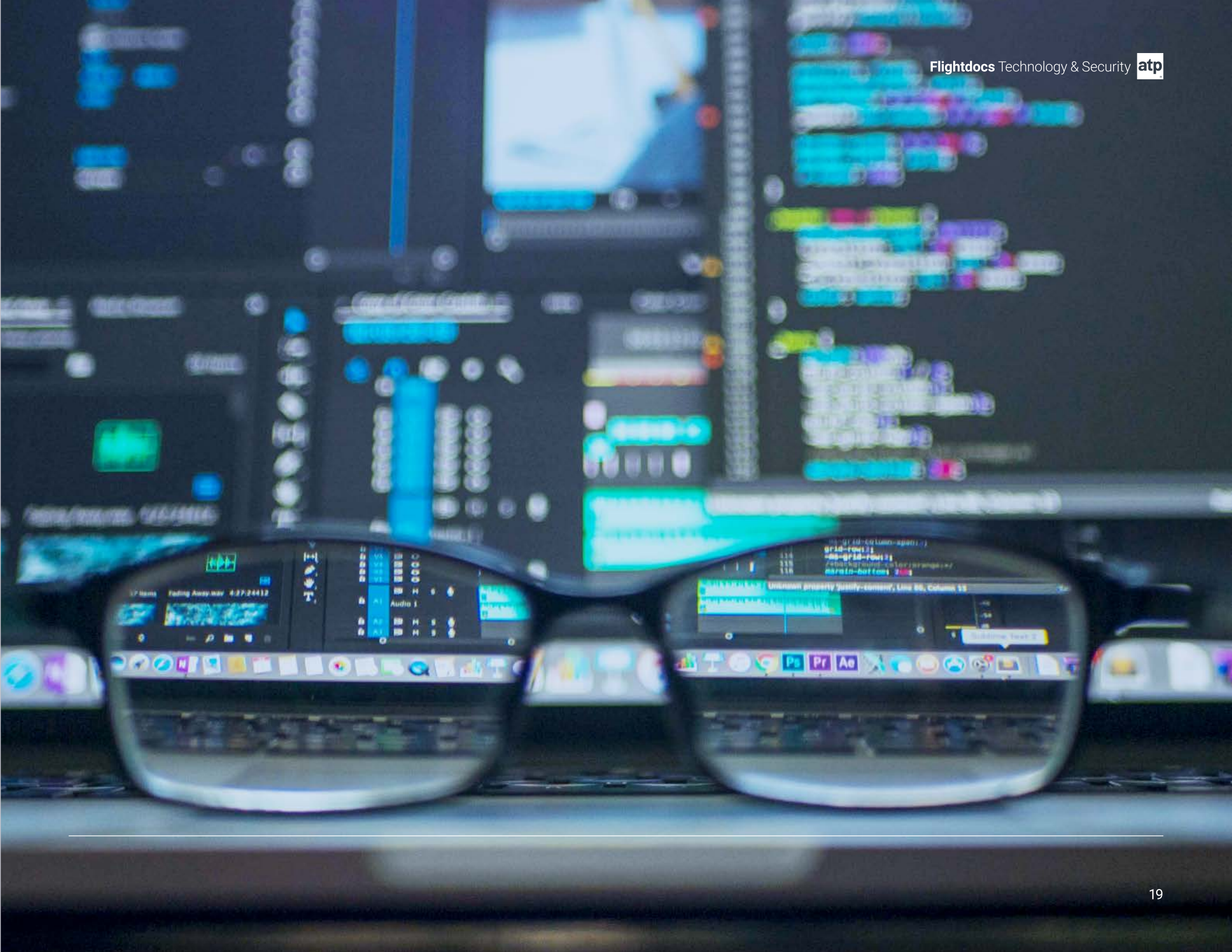
Continuous investment in the entire platform ensures you have the most advanced tools and that your data is always secure and accessible.

Our commitment starts with our US and Canadian based product development team. Our team is continuously deploying improvements while ensuring quality through a rigorous testing process.

Flightdocs is 100% cloud-based, with no hardware to install, and can be used with any OS and any browser. It also runs effectively as our feature-rich and native iPhone, iPad, and Android apps.

Hosted in AWS SSAE18 data centers, with geo-replication, your data is secure and accessible at all times. Flightdocs is SOC Type II Certified, the highest of all SaaS certifications available.

Another powerful feature of the Flightdocs technology stack is our API (Application Programming Interface) which allows for easy integrations with a variety of third-party platforms.



Customer Support

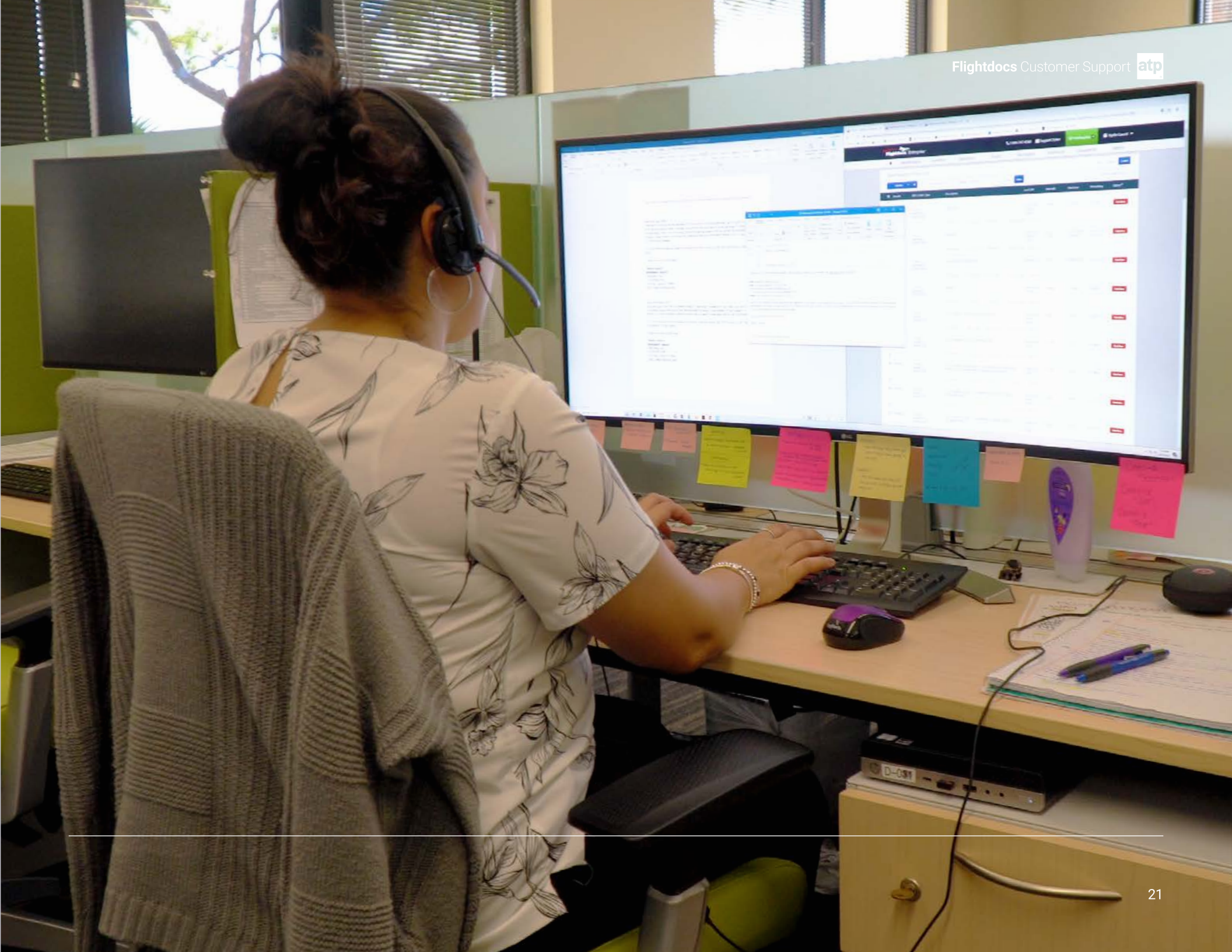
Great technology backed by industry-leading customer support is what truly sets Flightdocs apart, around the clock.

We understand the demands of our customers and the industry and that is why you will always reach a live analyst, 24 / 7 / 365. No answering services, no voicemails, and no excuses.

We are the only maintenance tracking provider with this level of customer support. We continually listen to your feedback and always look for ways to enhance the services we provide to you year after year.

An entire team of aviation specialists is available to assist you at any time. We monitor ADs and SBs, revise maintenance schedules, maintain reference materials, and process compliance updates.

Our customers consistently rate Flightdocs with the best customer service in the aviation industry, and we continue to enhance the services we provide to operators worldwide.



Getting Started

Making the move to Flightdocs is easy. Our enrollments team will manage the extraction, migration, and review of all of your data.

Migrating to Flightdocs is a seamless process, handled by our enrollments team. We obtain your current aircraft, flight operations, and inventory data, and review the enrollment process with you.

Once your enrollment is initiated, we move the data to the Flightdocs database, creating a mirror image of your aircraft maintenance compliance data, inventory status data, and vendor data.

Our Enrollment analysts will perform an aircraft data check, confirming the configuration and airworthiness requirements are accurate and in accordance with the latest revisions of manuals and local authorities.

To learn more about getting started on Flightdocs, please contact us at atp.com and our team will be happy to discuss the migration process and optimize a complete transition plan for you and your organization.



Flightdocs®



2000 Sierra Point Parkway, Suite 501
Brisbane, CA 94005
United States

learnmore@atp.com
1-800-747-4560
www.atp.com