

# Cardiac Surgery Flowprobes

Transonic® Cardiac Surgery Flowprobes and HT300-Series Flowmeters measure volume flow in blood vessels or grafts from 0.5 to 36.0 mm outer diameter. Measurements help the surgeon correct otherwise undetectable flow restrictions and guide surgical decisions to ensure the best outcome for the patient.

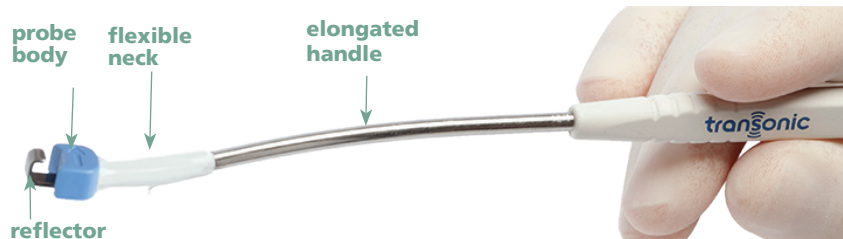
## Coronary Flowprobes for Coronary Artery Bypass (CABG) Surgery

FMC-SERIES PERIVASCULAR CORONARY BYPASS FLOWPROBES

CATALOG #	PROBE SIZE (mm)	VESSEL SIZE outer diameter (mm)
HQx 1.5FMC	1.5	1.3 - 2.3
HQx 2.0FMC	2	1.8 - 3.0
HQx 3.0FMC	3	2.4 - 4.0
HQx 4.0FMC	4	3.2 - 5.3

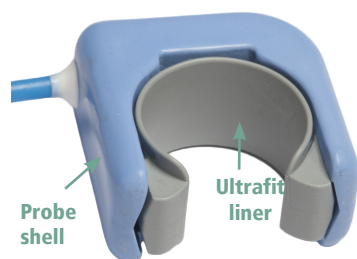


Pictured, from left to right, are 1.5 mm, 2 mm, 3 mm and 4 mm coronary Flowprobes showing their blue Probe bodies, J-style reflectors and ultrasonic sensing windows.



The Coronary Flowprobe's elongated handle allows for easy positioning of the Probe around coronary artery bypass grafts behind the heart. As shown above, the Flowprobe's flexible neck can be bent so that the Flowprobe can easily encircle a coronary graft or vessel.

## COncidence Flowprobes® for Continuous CO Measurements



On the left, miniature 6 mm and 4 mm COncidence Probes.

COncidence Flowprobes® provide highly accurate measurements in vessels with turbulent flows such as the ascending aorta. A novel four-transducer concept for ultrasonic signal coupling enables immediate, accurate beat-to-beat flow measurements.

COncidence Flowprobes consist of a form-fitting liner that cushions and protects the vessel during flow measurement and a reusable shell that encircles the vessel. Probes may be left in place for extended cardiac output measurements and then easily removed.

COncidence Flowprobes are available in 17 sizes ranging from miniature 4 mm and 6 mm flowprobes for pediatric and neonatal ascending aortas and pulmonary arteries to 36 mm for large turbulent vessels in adults.

CONFIDENCE FLOWPROBE® SPECIFICATIONS

AU-SERIES PROBE CATALOG #	LINER SIZE	VESSEL SIZE	MAXIMUM FLOW
	diameter (mm)	outer diameter (mm)	(L/min)
HQE 4AU	4	3 - 4	2
HQE 6AU	6	5 - 6	5
HQx 8AU	8	6 - 8	10
HQx 10AU	10	8 - 10	10
HQx 12AU	12	9 - 12	20
HQx 14AU	14	11 - 14	20
HQx 16AU	16	13 - 16	50
HQx 20AU	18, 20	15 - 20	50
HQx 24AU	22, 24	18 - 24	100
HQx 28AU	26, 28	22 - 28	100
HQx 32AU	30, 32	26 - 32	200
HQx 36AU	34, 36	30 - 36	200