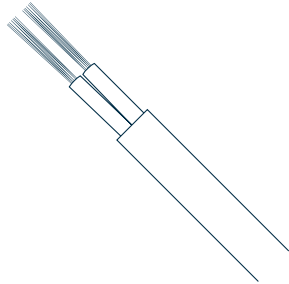


# Kaiterra Square

# Air Quality Monitor Wiring Guide

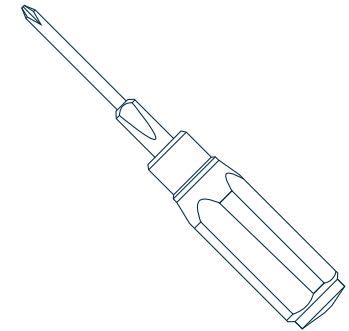
# Required Tools



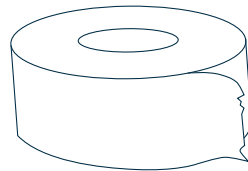
- 1** 220V AC power cable that supports direct wiring



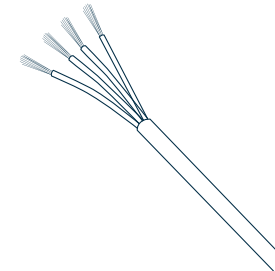
- 2** Kaiterra Square Air Quality Monitor



- 3** Cross screw driver



- 4** Electrical tape or other protection measures, such as a standard 86 box



- 5** RS485 communication cable (optional)

# Wiring Procedures

- 1** Please check if you have all the screws on the power sockets.
- 2** Make sure that your power cable is disconnected from the power supply. If you're unsure, use a probe or multimeter.
- 3** Insert and fasten the live wire (normally red or brown) and naught wire (normally blue) into the power sockets, as shown in Image 1 on the right. Please do NOT insert the ground/protection line (normally yellow and green). Consult your electrician if you're not sure.

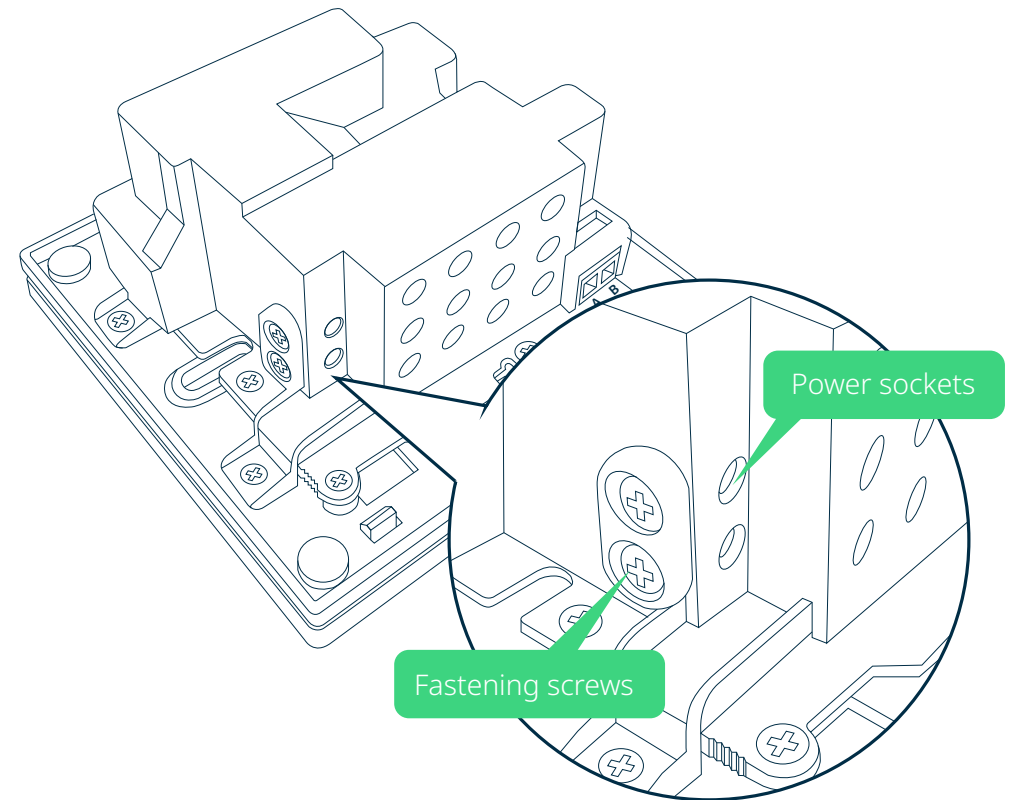


Image 1

- 4** Fasten the screws.
- 5** If you don't plan to install the monitor into the wall, please use electrical tape or other protection measures to avoid electrical shocks or other injuries. Please do NOT touch the sockets or the screws when the power is connected.
- 6** [Optional] Insert the RS485 communication cables into the pins and fasten the screws. Pin A is for Cable A in RS485, and Pin B is for Cable B in RS485.

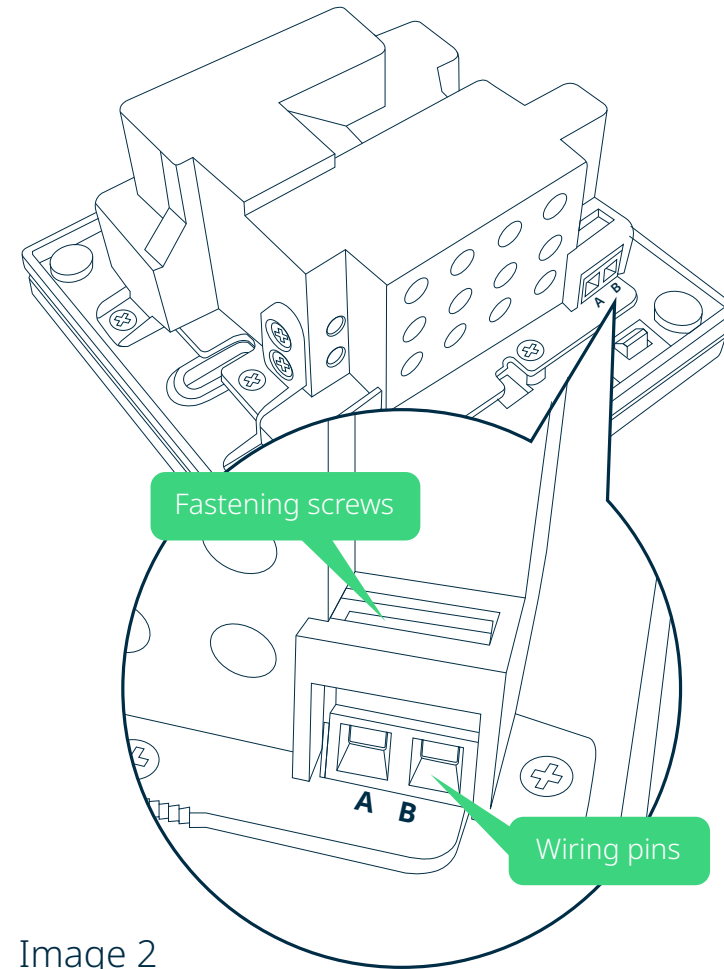
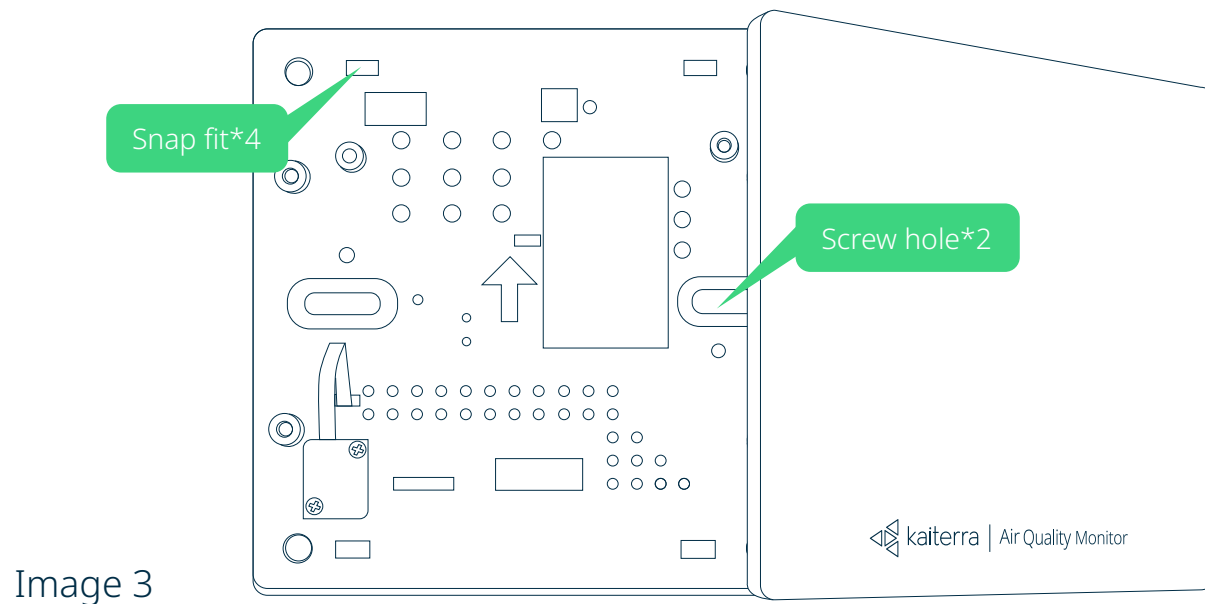


Image 2

- 7** Make sure all cables are fastened.
- 8** [Optional] To install the monitor into the 86 box, remove the front cover by releasing the four snap fits (see Image 3 below). Use the screws to install the monitor into the standard 86 box and then assemble the front cover, or utilize the isolation protection measures from Step 5.
- 9** Connect the power to turn on the monitor. If you want to pair the device to the internet, please see "Kaiterra Square Pairing Guide."





For additional support,  
please contact your sales representative or contact us at the following email address:  
[support@kaiterra.com](mailto:support@kaiterra.com)