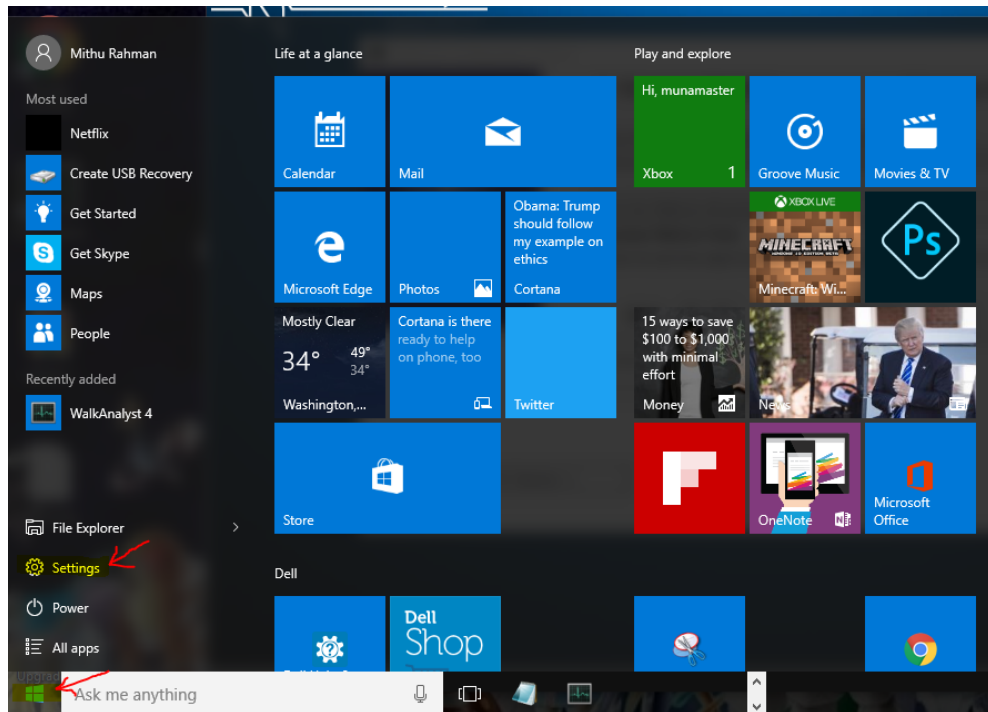


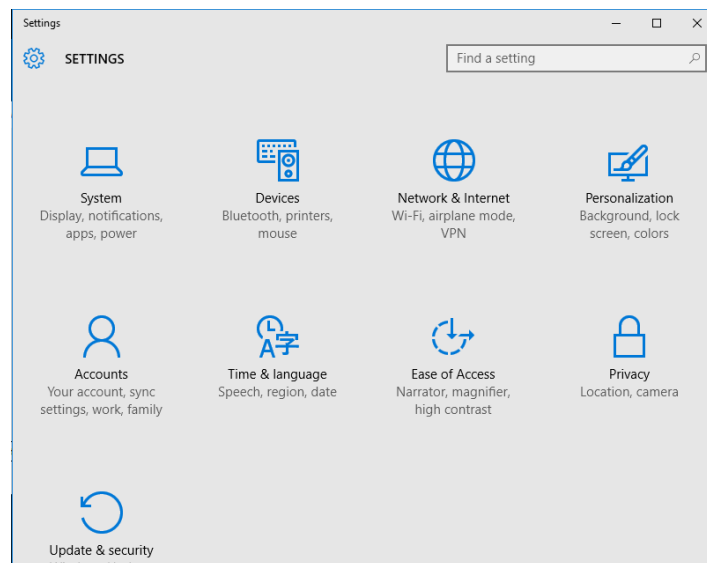
Turn on Windows 10 Bluetooth Setting:

Press the WINDOWS button.

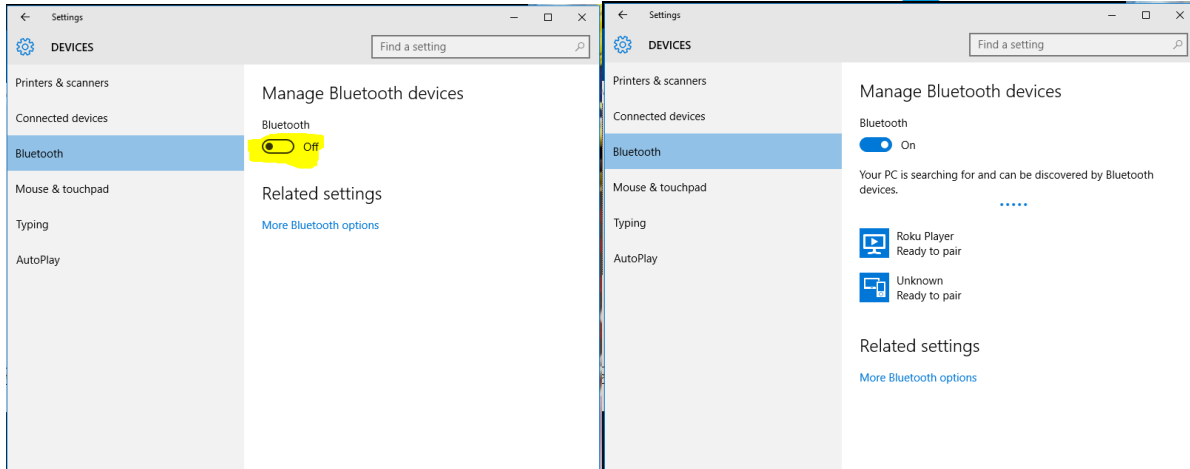
Select SETTINGS.



Select DEVICES, BLUETOOTH, PRINTERS, MOUSE.



Under the DEVICES list, select BLUETOOTH.



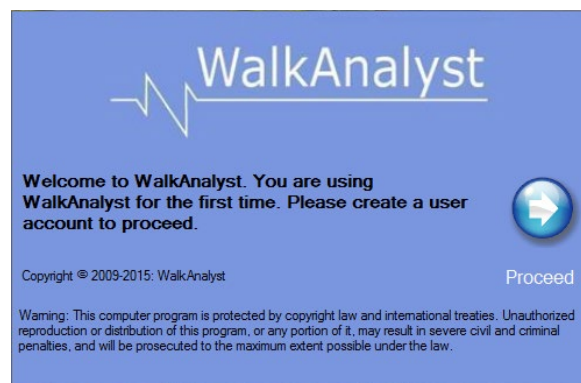
Ensure under MANAGE BLUETOOTH DEVICES section, BLUETOOTH is set to ON.

Close the SETTINGS window.

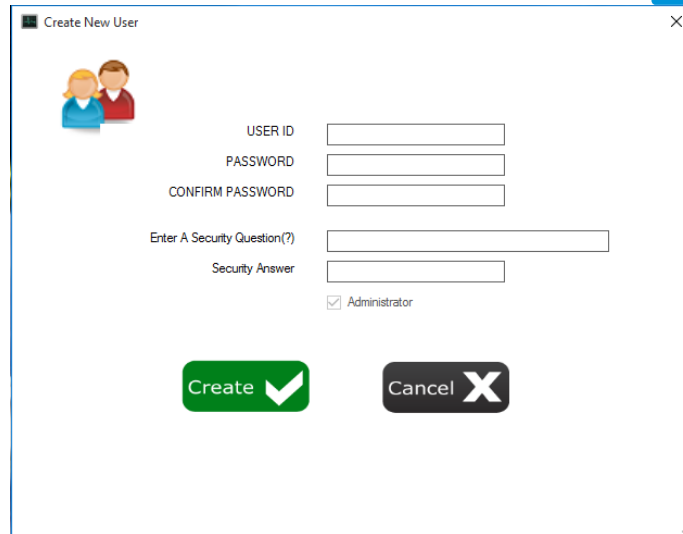
Pair WalkLink with WalkAnalyst:

Open WalkAnalyst application.

If you are using WalkAnalyst for the first time, press the PROCEED button to create the user account.



Enter the USER ID, PASSWORD, CONFIRM PASSWORD. Enter a security question and answer for future secured password recovery. Press the CREATE button. 'New user added' message will be displayed. Press OK.



Create New User

USER ID

PASSWORD

CONFIRM PASSWORD

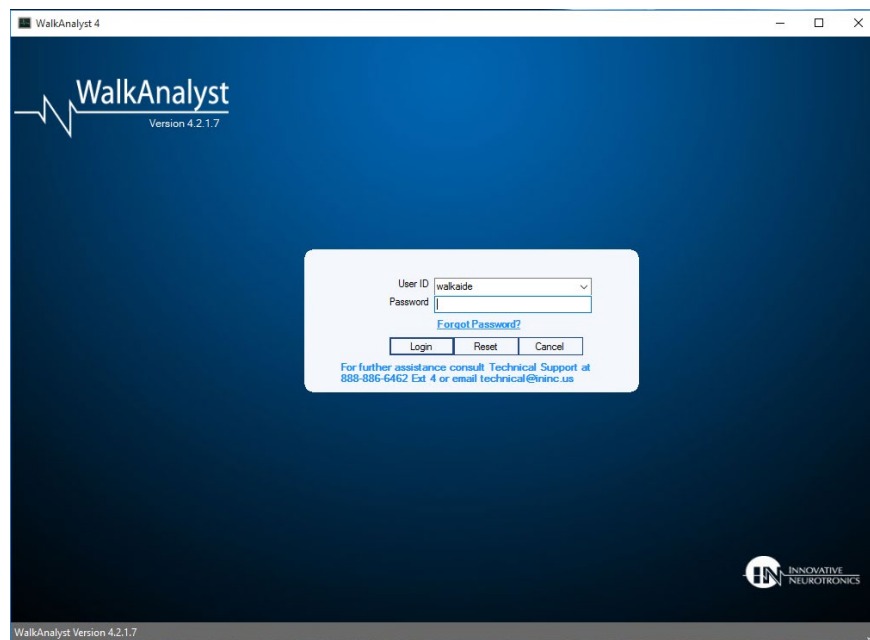
Enter A Security Question(?)

Security Answer

☒ Administrator

Create **Cancel**

Login to WalkAnalyst.



WalkAnalyst
Version 4.2.1.7

User ID

Password

[Forgot Password?](#)

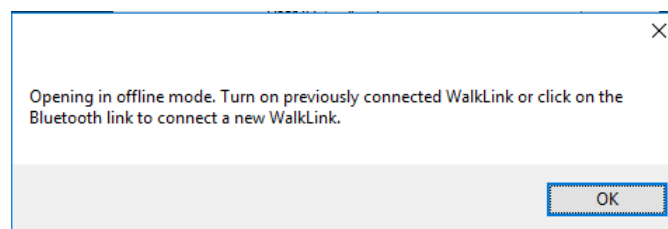
Login **Reset** **Cancel**

For further assistance consult Technical Support at 888-886-6462 Ext 4 or email technical@ninc.us

INNOVATIVE NEUROTRONICS

WalkAnalyst Version 4.2.1.7

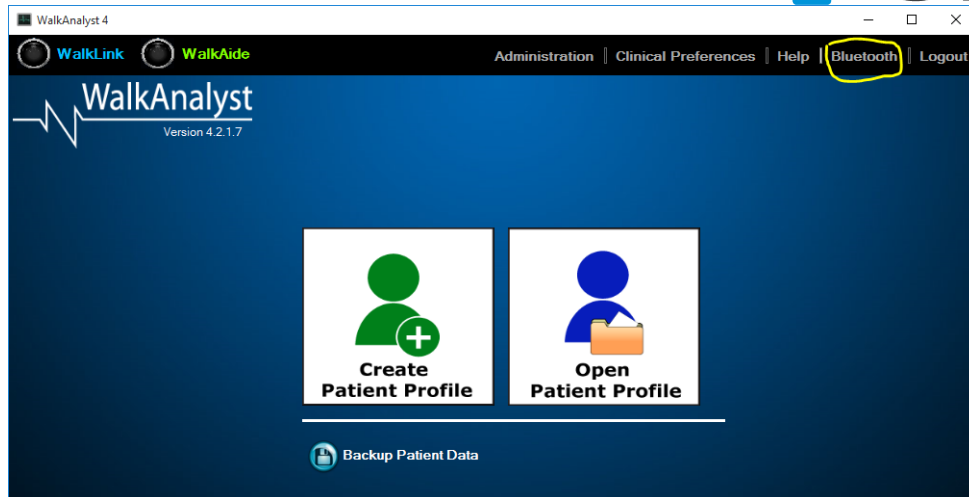
A message stating 'Opening in offline mode. Turn on previously connected WalkLink or click on the Bluetooth link to connect a new WalkLink.' Press the OK button.



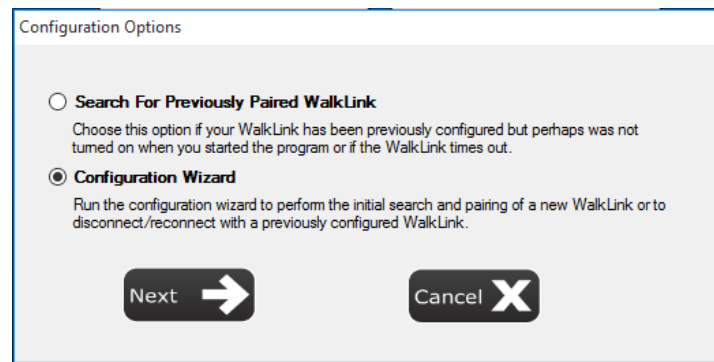
Opening in offline mode. Turn on previously connected WalkLink or click on the Bluetooth link to connect a new WalkLink.

OK

Press the BLUETOOTH link.



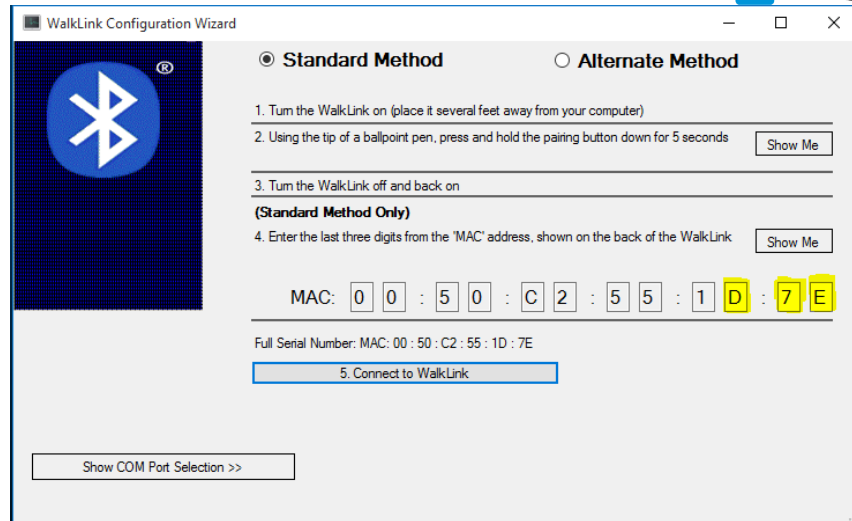
For the CONFIGURATION OPTIONS window, select the CONFIGURATION WIZARD radio button and press the NEXT button. WALKLINK CONFIGURATION WIZARD window will be displayed.



Select the STANDARD METHOD on the WALKLINK CONFIGURATION WIZARD window.

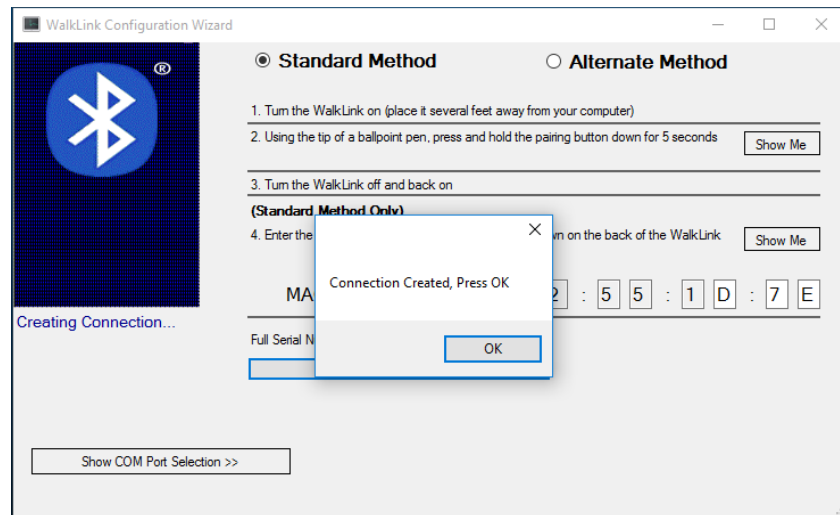
Reset the WalkLink: Turn ON the WalkLink. Press the UNPAIR button of the WalkLink for about 10 seconds. Turn OFF the WalkLink and turn it back ON.

On the WALKLINK CONFIGURATION WIZARD window enter the last 3 digit of the MAC address from the back of the WalkLink.



Press the CONNECT TO WALKLINK button.

Pairing process will start. After pairing is complete, a window displaying the message 'Connection Created, Press OK'. Press the OK button.



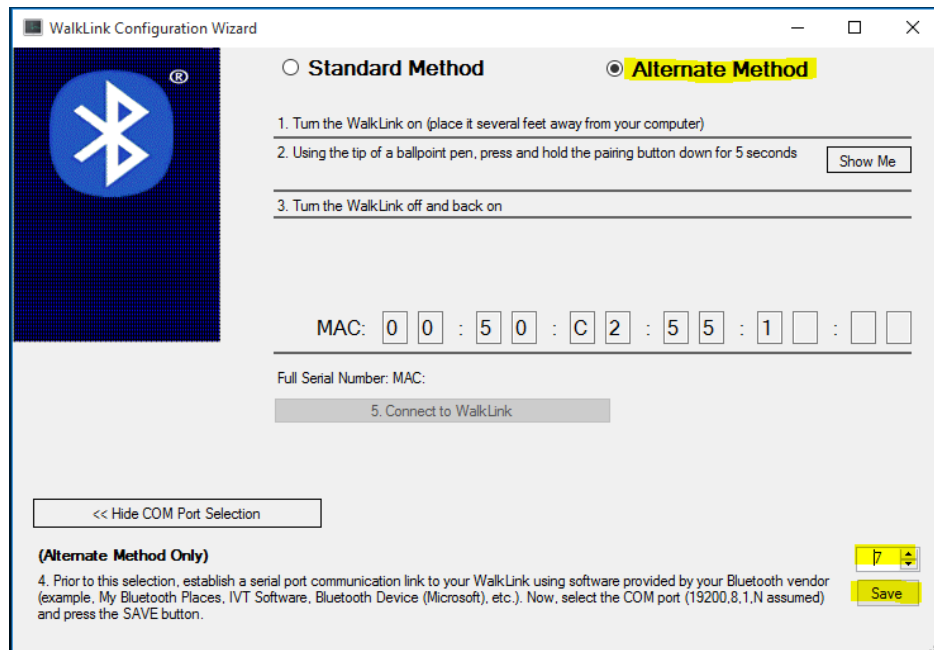
WalkLink will display blinking blue light and the WalkAnalyst blue indicator will show WalkAnalyst connected to the WalkLink.



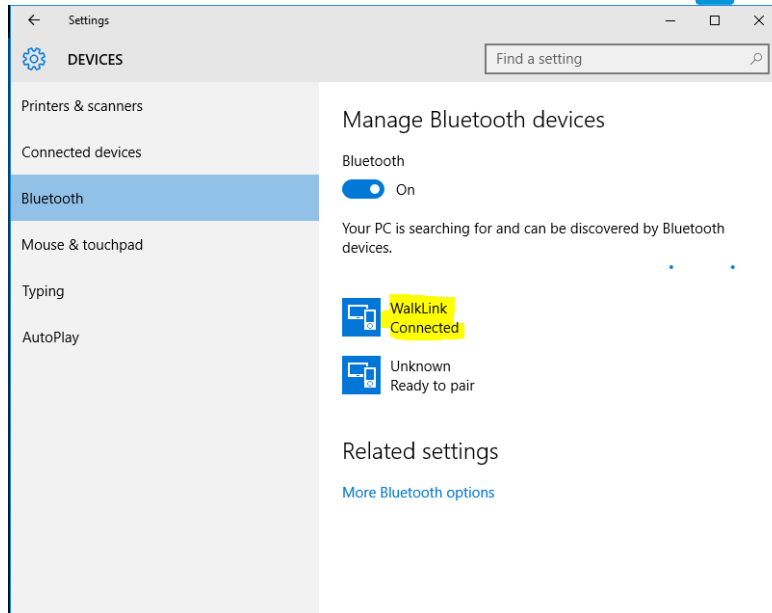
Connect a WalkAide (with battery installed) using a WalkLink cable. Turn the WalkAide ON by turning the blue knob. WalkAide connection indicator will be lit.



NOTE: If you have trouble connecting to WalkLink using the STANDARD METHOD, you may not have internal Bluetooth installed or you may have a non-standard Bluetooth installed.



In case of no internal Bluetooth, you have to use an external Bluetooth device connected to your USB port. If the external Bluetooth device does not load the Bluetooth software automatically, you have to install the special Bluetooth software accompanying the Bluetooth device. For non-standard Bluetooth stack, use Windows Settings/Devices/Bluetooth, to pair the WalkLink externally.



Find the COM port associated with that connection. Go back to WALKLINK CONFIGURATION WIZARD/ALTERNATE METHOD, select the matching COM port and SAVE the configuration. Device Manager/Ports(COM & LPT) shows the COM port number. Ensure you have the WalkLink showing blinking blue light and WalkAnalyst WalkLink indicator light is lit.