



# LTE Failover Guide

PREPARING FOR THE UNEXPECTED

From point-of-sale (POS) systems and customer service to billing and accounts payable, enterprises are leveraging Internet connectivity in a variety of daily operations to reduce costs, improve customer experiences, and track important success metrics.

## Overview

As these organizations become increasingly reliant on Internet connectivity and cloud-based services, preventing network downtime is more than just an IT issue – it is a strategic imperative.

Unfortunately, even the best broadband infrastructure is not immune to occasional drops in connection.

Each year, we continue to see significant Internet outages each year that impact thousands of businesses worldwide. In fact, according to a study by Opengear, 23% of businesses report a 25% or more increase in network outages over the past five years.

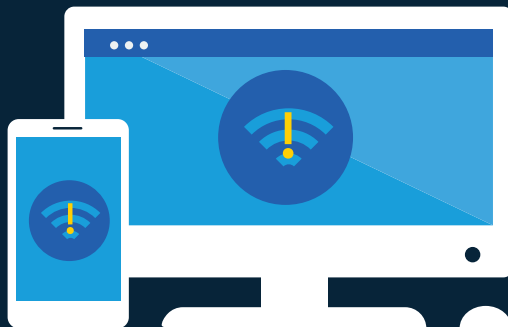
## The Impact of Downtime

What is actually at stake when networks go down?

Downtime causes businesses to incur huge losses.

**\$5,600**

the average cost of  
downtime per minute as  
reported by Gartner.



**51%**

of organizations  
experienced at least four  
outages, each lasting  
more than 30 minutes.



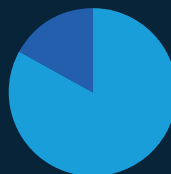
**38%**

of U.S. firms lose  
more than



**\$1M**

each year via  
network outages.



**81%**

of businesses  
report that



**\$300K**

is the cost of a single  
hour of downtime

Downtime can harm a business' security,  
efficiency, and reputation.

- Downtime can cause an immediate hit to revenue from a POS, CRM, or inventory management system failure.
- 41% of businesses believe that reduced customer satisfaction was the biggest impact of an outage.
- Non-PCI compliance can leave your organization open to security risks and fraud.
- Downtime can put a halt to the security and data storage provided by your cloud-based applications.



# 41%

of businesses believe the biggest impact of an outage was reduced customer satisfaction.

## What are the Top Causes of Downtime?

According to Network World, the top culprits of network outages include:



### Network Congestion

A reduced quality of service that occurs when a network node or link is carrying more data than it can handle. For example, a congested network results in long online queues, buffering, and poor voice over Internet Protocol (VoIP) quality.



### Human Error

For example, an accident occurs when taking down lines or cutting cables.



### Natural Disaster or Natural Elements

For example, storms downing powerlines or animals chewing through cables.



### Distributed Denial of Service (DDoS) Attacks

A cyber extortion attack denying services to legitimate users. For example, a railway website subject to a DDoS is unable to serve individuals who want to book tickets online.

## Preparing for the Unexpected

Given the significant costs in revenue, efficiency, and brand reputation that you may face during a network outage, it is important to identify an automatic failover solution that can prevent these catastrophic losses and ensure that your essential business operations keep running.

Preparing for the unexpected begins with determining:



### The needs of your organization

What are your essential business operations? Which systems, should they be down – for 15 minutes, 30 minutes, and hour – would have the biggest impact on your revenue and critical operations?



### Your budget

How much are you willing to invest in a cost-saving solution like LTE failover?



### Network integration

Will the failover solution integrate with your existing primary network?



### Measuring success

How will you determine how your backup solution is performing? How will you track and identify success?





## The Kajeet LTE Failover Solution

Kajeet, a trusted IoT solution provider, is here to help you prepare for the unexpected.

The LTE Failover Solution from Kajeet provides a stand-alone cellular gateway or router that uses LTE connectivity to automatically switch over when the primary network fails. Our cloud-based malware and defense tools merge with your existing security architecture to provide additional protection during an outage.

The solution can be easily integrated into your existing network infrastructure, and works with all the major North American wireless networks. Our backup Internet for businesses provides centralized data and device management and monitoring. Using policy controls, we ensure that neither data nor money is wasted on non-essential functions.

## What's the Kajeet Difference?

### Better Customer Experience.

Reduce the impact of service outages with an LTE failover solution so customers can still conduct business in the event of an outage.

### Multi-Network Access.

Access to any combination of the major North American wireless networks.

### Customizable Solutions.

Hardware and services are fully tailored to your needs and integrate with existing network infrastructure.

### Optimized Data Connectivity.

Share and rollover data across multiple networks and devices.

See why businesses trust Kajeet to deliver best-in-class wireless solutions and scalability. Contact us today at [kajeet.net/contact-us/](https://kajeet.net/contact-us/) to consult with a Solutions Engineer.