



V200 and V210

The meters that give you more

**V200 and V210 range
of domestic volumetric
cold water meters**

V200 and V210 Volumetric cold water meters

Manufacturing water meters for utility, commercial and domestic applications, Honeywell is the world's leading manufacturer of integrated metering, offering solutions for revenue metering, cost allocation, network monitoring, distribution and industrial applications. V200 and V210 volumetric meters are designed to maximise revenue collection and both are available in a range of sizes covering a wide range of flow rates.

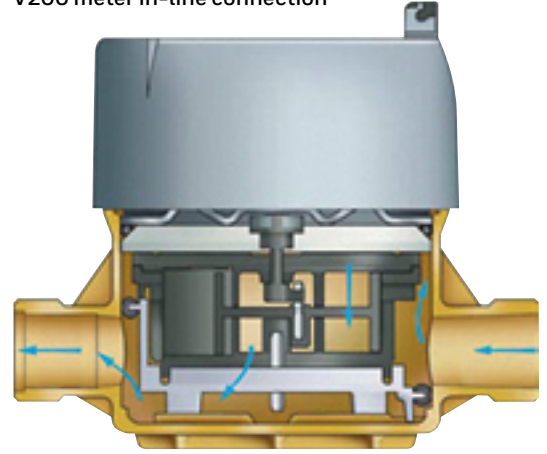
Key features

- Simple link to radio technology
- Approval to European Directive 2014/32/EU
- Detection of extremely low flows
- Precision calibrated assembly method
- Maximised revenue collection by innovative design
- Volumetric design permits optimum performance in horizontal, vertical or inclined pipelines
- Proven grooved piston for excellent durability and reduced blockages
- Hermetically sealed copper can register with glass lens, providing conformity to IP68





V200 meter in-line connection



Register and shroud

The easy-to-read, hermetically sealed copper can register has a 10-year proven track record. Tamper-proof registers are sealed to eliminate condensation and waterproofing, and offer conformity to IP68.

Innovative communication

As the demand for remote metering increases, the V200/V210 offers a range of communication options for every utility company. Incorporating an inductive pulse target which can be read by a tamper-proof, bi-directional inductive pulse transmitter, the V200/V210 is easily integrated into a remote reading system by simply adding the relevant module.

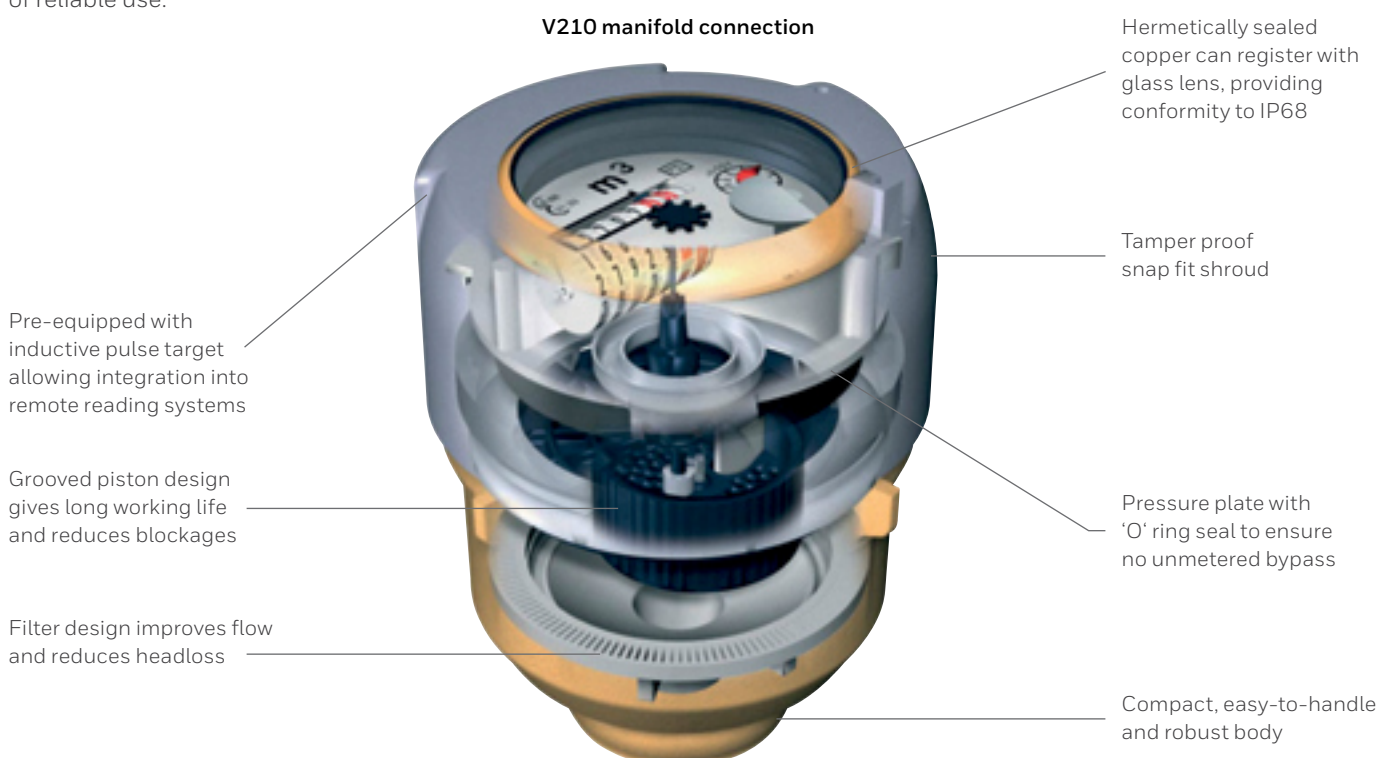
The bi-directional inductive pulser monitors the flow of water and is self-powered for years of reliable use.

Outstanding accuracy and long-term performance

V200 and V210 meters are designed to give long, trouble-free working life, with excellent features such as the proven grooved piston design. The action of this piston creates flow eddies in the grooves which hold solids in suspension until flushed out, reducing the possibility of meter stoppages.

The V200/V210 meters offers low headloss reducing network leakage operational costs. It's volumetric design permits optimum performance in horizontal, vertical or inclined pipelines.

V210 manifold connection



V200 and V210

Product Specification

MEASURING INSTRUMENTS DIRECTIVE 2014/32/EU SPECIFICATIONS ACCORDING TO OIML R49, EN14154 AND ISO4064

EXCEEDING CLASS D EQUIVALENT						
METER MODEL			V200	V200	V210	V210
METER SIZE		mm	15	20	15	20
FLOW RANGE Q_3/Q_1	R		400	315	400	315
OVERLOAD FLOW RATE	$Q_4 \pm 2\%$	m ³ /h	3.125	5	3.125	5
PERMANENT FLOW RATE	$Q_3 \pm 2\%$	m ³ /h	2.5	4	2.5	4
TRANSITIONAL FLOW RATE	$Q_2 \pm 2\%$	l/h	10.00	20.32	10.00	20.32
MINIMUM FLOW RATE	$Q_1 \pm 5\%$	l/h	6.25	12.70	6.25	12.70
STARTING FLOW (APPROXIMATELY)		l/h	1	2	1	2



FLOW RANGE R160* (CLASS C EQUIVALENT)											
METER MODEL			V200	V200	V200	V200	V200	V200	V200	V210	V210
METER SIZE		mm	15	20	25	30	30	40	40	15	20
METER THREAD SIZE		in	G3/4"A	G1"A	G1 1/4"A	G1 1/4"A	G1 1/2"A	G2"A	G2"A	G1 1/2"A	G1 1/2"A
OVERLOAD FLOW RATE	$Q_4 \pm 2\%$	m ³ /h	3.125	5	7.875	12.5	12.5	12.5	20	3.125	5
PERMANENT FLOW RATE	$Q_3 \pm 2\%$	m ³ /h	2.5	4	6.3	10	10	10	16	2.5	4
TRANSITIONAL FLOW RATE	$Q_2 \pm 2\%$	l/h	25	40	63	100	100	100	160	25	40
MINIMUM FLOW RATE	$Q_1 \pm 5\%$	l/h	15.625	25	39.375	62.5	62.5	62.5	100	15.625	25
STARTING FLOW (APPROXIMATELY)		l/h	1	2	6	12	12	12	20	1	2
DIAMETER (A)		mm	94	94	120	150	150	150	181	94	94
HEIGHT (B)**		mm	113	111	130	145	145	145	166	126	136
HEIGHT WITH LID OPEN (C)		mm	180	177	200	215	215	215	236	193	203
LENGTH (D)		mm	110, 115, 134, 165, 170	165, 190	199, 260	199, 260	199, 260	300	300	n/a	n/a
HEIGHT WITH ENCODER OR HYBRID		mm	127	125	144	159	159	159	184	140	150
LENGTH OVER CONNECTIONS (E)		mm	195, 200, 228, 250, 255	267, 288	311, 370	327, 380	327, 380	421	421	n/a	n/a
WEIGHT (APPROXIMATELY)		kg	1.0	1.2, 1.3	2.3, 2.6	3.4, 3.7	3.4, 3.7	4.0	6.1	0.9	1.0

V210

V200

Headloss at Q_3 less than 0.63 bar.

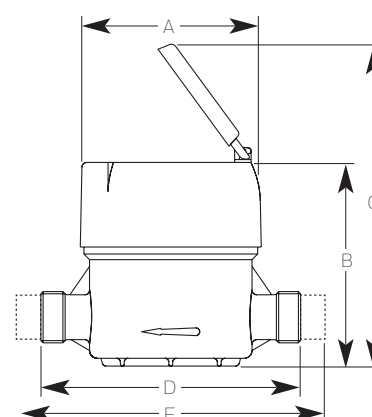
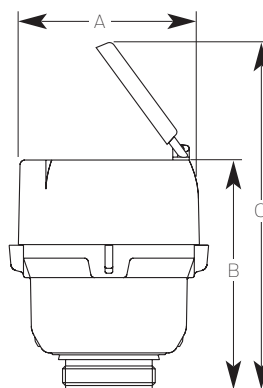
Maximum water temperature 30°C, working pressure

16 bar. Maximum registration 99999.99m³.

*Note: Other Q_3/Q_1 ratios are available on request

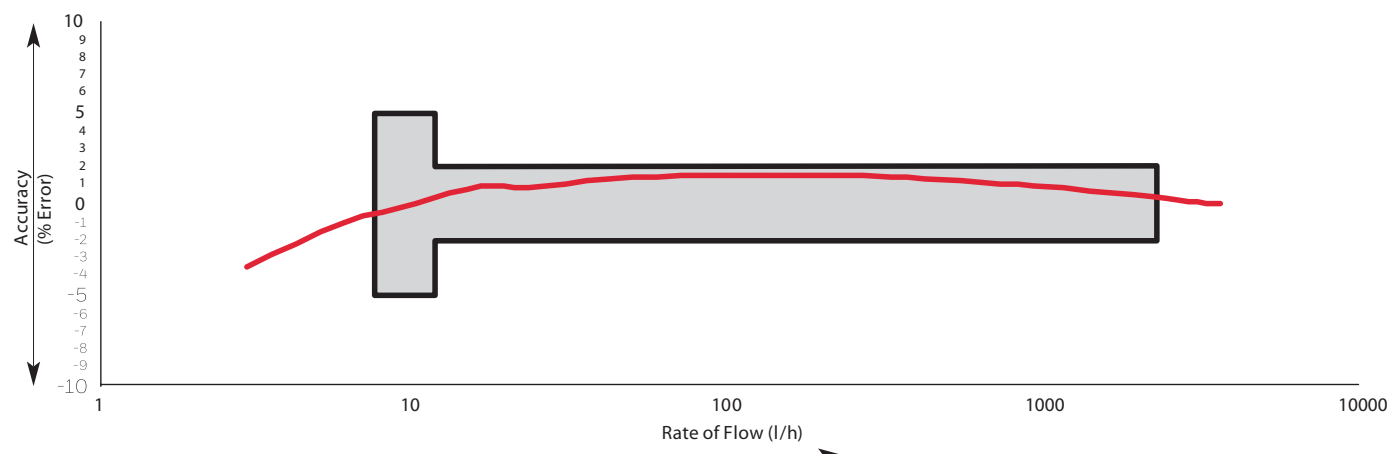
**Height with PR6 = B + 10mm, with TPR6 or TPR11 = B + 48mm.

REGISTER OPTIONS		
INDUCTIVE	1 Pulse/litre	PR6 and TPR11 compatible
ENCODER	Full reading in m ³	
HYBRID (ELECTRONIC)	Full reading in m ³	



V200 and V210 Product Specification

TYPICAL ACCURACY CURVE



Pressure equipment directive 97/23/EC:

This product is applicable in networks for the supply, distribution and discharge of water and associated equipment and is therefore exempt.

Honeywell

ADR
Arthur D Riley & Co Ltd

fieldsmart technology



ADRwater

AUCKLAND
8 BEATRICE TINSLEY CRES
ROSEDALE 0632
PO BOX 302-248, NORTH HARBOUR
AUCKLAND 0751
T: (09) 444 2350 F: (09) 444 3085

HAMILTON
1/21 RAILSIDE PLACE
DINSDALE 3204
PO BOX 230
RAGLAN 3265
T: (07) 846 0602 F: (07) 846 0604

WELLINGTON HEAD OFFICE
137 THORNDON QUAY
WELLINGTON 6011
PO BOX 3749
WELLINGTON 6140
T: (04) 472 7614 F: (04) 472 7658

CHRISTCHURCH
UNIT 4, 89 VICKERYS ROAD
WIGRAM 8042
PO BOX 11 033, SOCKBURN
CHRISTCHURCH 8443
T: (03) 379 2628 F: (03) 379 2627

www.adriley.co.nz