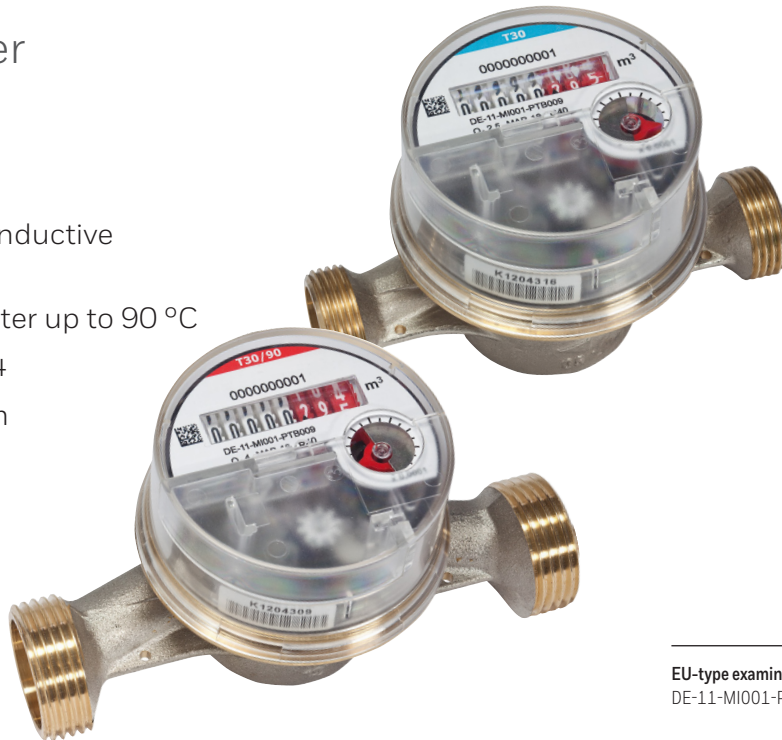


S110 Surface mounted meter PICOFLUX

Connectable –
with 'Flex Plus' register

- Single-jet meter dry dial EF
- Novel 'Flex Plus' register with inductive communication interface
- Cold water up to 30 °C, hot water up to 90 °C
- Nominal flow rate Q_3 2.5 and 4
- Meter length 80, 110, 130 mm



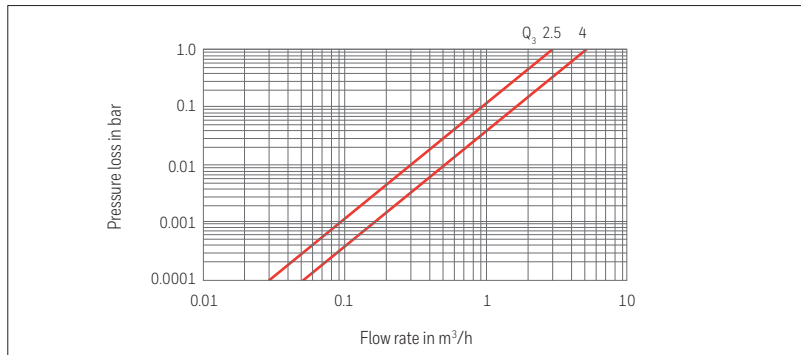
EU-type examination certificate
DE-11-MI001-PTB009

Meter type	EF					
Meter size / Continuous flow rate	Q_3	m ³ /h	2.5	2.5	2.5	4
acc. to previous nominal size	Q_n	m ³ /h	1.5			2.5
Nominal size	DN	mm	15		20	
	DN	inches	1/2		3/4	
Meter length		mm	80	110	110	130
Meter connection thread		inches	G 3/4 B	G 3/4 B	G 1 B	G 1 B

Performance characteristics

Overload flow rate	Q_4	m ³ /h	3.125		5	
Transitional flow rate	Q_2	l/h	100		160	
Minimum flow rate	Q_1	l/h	62.5		100	
Starting flow		l/h	8	7	10	
Measuring range (MID)	Q_3/Q_1	H/V	R 40			
Continuous load	Q_3	l/h	2,500			4,000
Temperature class	MAT	°C	30; 30/90			
Pressure rating	MAP	bar	16			
Flow capacity at 1 bar pressure loss		m ³ /h	3.3			5.2
Mechanical class			M1			
Min. straight length of inlet/outlet pipe			U0/D0			
Climatic ambient conditions		°C	5 to 70			
Protection class	IP		54			
Accuracy class cold water			±2%/±5%			
Accuracy class hot water			±3%/±5%			
Magnetic protection			EN 14154-3			

S110 Surface mounted meter PICOFLUX Technical Data



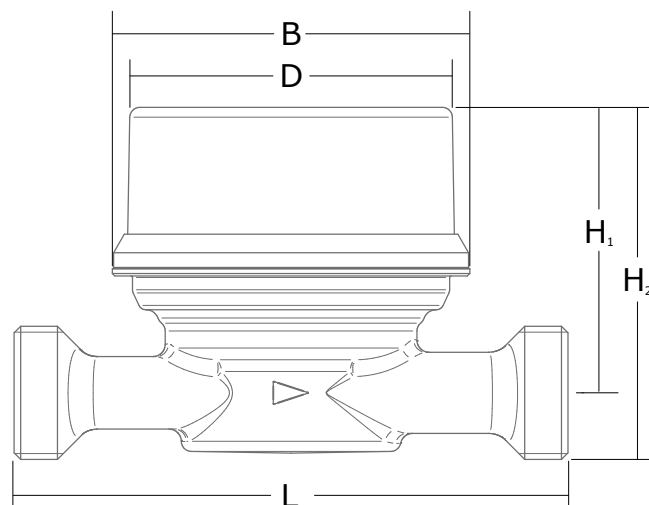
Meter type	EF				
Meter size / Continuous flow rate	Q ₃ m ³ /h	2.5	2.5	2.5	4
acc. to previous nominal size	Q _n m ³ /h	1.5			2.5

Dimensions					
Meter connection thread	inches	G 3/4 B	G 3/4 B	G 1 B	G 1 B
L Length	mm	80	110	110	130
B Width	mm	71			
D Diameter register cap	mm	64			
H ₁ Centerline height	mm	57.5			
H ₂ Overall height	mm	71			
Weight	kg	0.3			

Retrofittable function modules	Manufacturer
M-Bus/Pulse	Elster
Radio	Müller Electronic µflow-skyE/µflow-omsE
	Qundis
	Sontex Supercom 582

Dimensional drawing

EF



For further information visit:
www.elstermetering.com

AUCKLAND
 8 BEATRICE TINSLEY CRES
 ROSEDALE 0632
 PO BOX 302-248, NORTH HARBOUR
 AUCKLAND 0751
 T: (09) 444 2350 F: (09) 444 3085

HAMILTON
 1/21 RAILSIDE PLACE
 DINSDALE 3204
 PO BOX 230
 FRANKTON 3242
 T: (07) 846 0602 F: (07) 846 0604

WELLINGTON HEAD OFFICE
 137 THORNDON QUAY
 WELLINGTON 6011
 PO BOX 3749
 WELLINGTON 6140
 T: (04) 472 7614 F: (04) 472 7658

CHRISTCHURCH
 UNIT 4, 89 VICKERYS ROAD
 WIGRAM 8042
 PO BOX 11 033, SOCKBURN
 CHRISTCHURCH 8443
 T: (03) 379 2628 F: (03) 379 2627