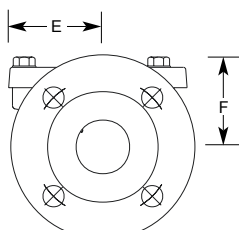
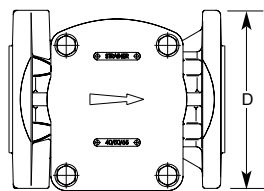
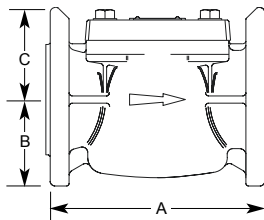


Woltmann cold water strainers

THE POWER OF CONNECTED

Sizes mm 40 50 65 80 100 125 150

- Designed with low headloss, for use with Woltmann type meters
- Heavy duty stainless steel grade 316 sieve element prevents large particles from damaging the measuring mechanism
- Special wave design provides the largest possible area of filter element
- Sieve hole size is 3mm which gives 33% free area, there are 30 holes per square inch of mesh
- Sieve element can be removed for cleaning or replacement, without disturbing the flange joints
- Maximum working pressure 16 bar
- Maximum water temperature 50°C



Size mm	A mm	B mm	C mm	D mm	E mm	F mm	Weight kg	Spare Strainer Element Part No.
40	300	78	76	□ 151	85	81	11.8	HSA0802
	311						12.0	
50	200	78	83	□ 166	85	81	12.2	HSA0802
	300						13.1	
65	311	86	93	□ 186	85	81	13.3	HSA0802
	200						14.4	
80	350	94	101	□ 201	85	92	14.1	HSD0802
	413						15.3	
100	250	106	114	□ 228	85	92	19.4	HSD0802
	350						21.0	
125	483	118	126	□ 251	85	92	23.6	HSD0802
	250						20.5	
150	300	148	143	□ 286	145	158	34.0	HSG0801
	500						44.0	

Flanges can be drilled to the following specifications:
BS10 Tables C, D, E, BS4504 PN10/16. ANSI B16.1/5 Class 125/150. DIN 2532/3.